

1
Bedrooms



1
Bathrooms



595
Square Feet



N/A
Lot Size



MLS # 6809
Listing ID



106 111 Moyle Drive

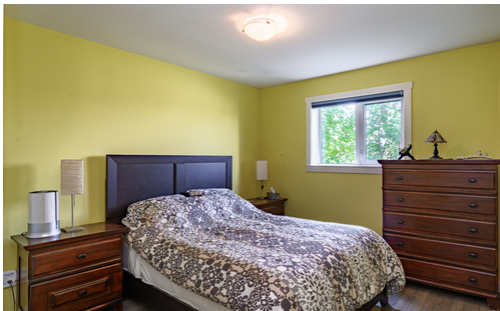
Welcome to this beautifully maintained 1-bedroom, 1-bathroom condominium in a highly desirable development built in 2013 with EnerGuide 80 construction, offering outstanding energy efficiency.

This bright main-floor unit features a spacious private deck backing onto peaceful greenspace with direct access to nature trails. Inside, you'll find an open-concept layout with a kitchen featuring beautiful maple cabinets, a convenient in-suite laundry room, a spacious bedroom, a full bathroom, and fresh paint throughout.

Additional highlights include heated underground parking, a well-managed building and condominium corporation, and heat and water included in the condo fees. Parks and downtown are just a short walk away.

Price includes: Fridge, Stove, Dishwasher, Washer, Dryer, Blinds, and Garage Door Opener.

Move-in ready and ideal for first-time buyers, downsizers, or investors!



Year Built: 2013

Style: Condominium

Property Tax: \$1,264 (2026)

Heating: Propane

Condo Fees: \$520.80

Roof: Asphalt Shingles

Foundation: Concrete

Storage: Shed



\$374,900

Tanya Kearney

REALTOR®

(867) 446-6016 Cell

(867) 873-2700 Office

tanya.kearney@remaxyk.ca

www.REMAXYK.ca

RE/MAX North of 60 Realty

341 A Old Airport Road

Yellowknife, NT X1A 3T4

