

# 1620 Parkway Blvd, Coquitlam, BC

Total\*\*

Main Level: 1,860 sq.ft.

Upper Level: 1,820 sq.ft.

Lower Level: 1,755 sq.ft.

**Total: 5,435 sq.ft.**

Garage: 691 sq.ft.

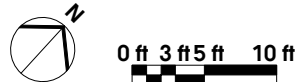
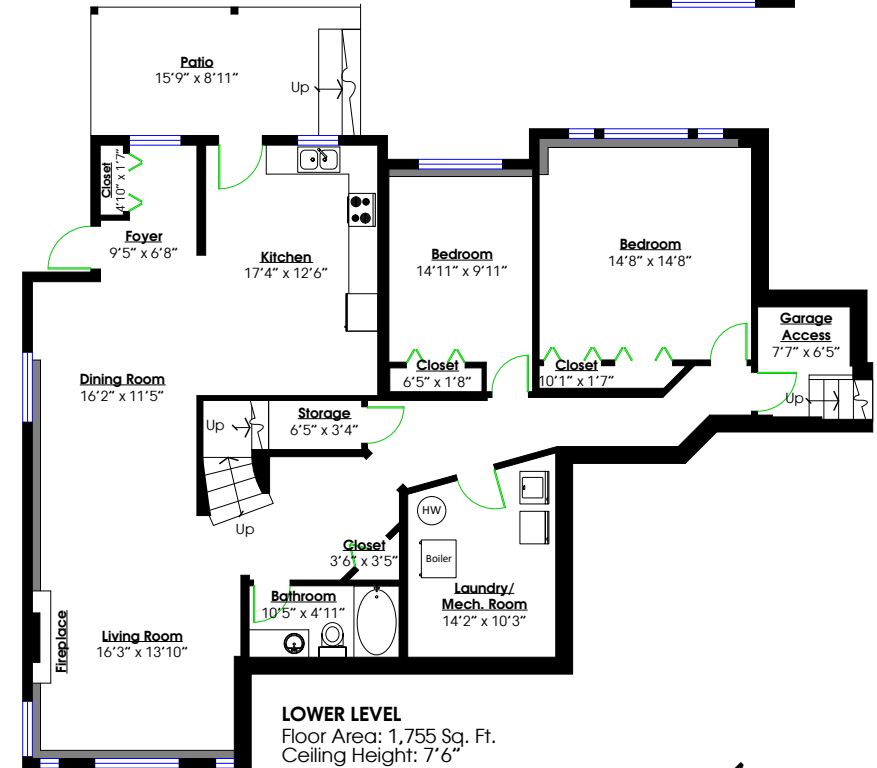
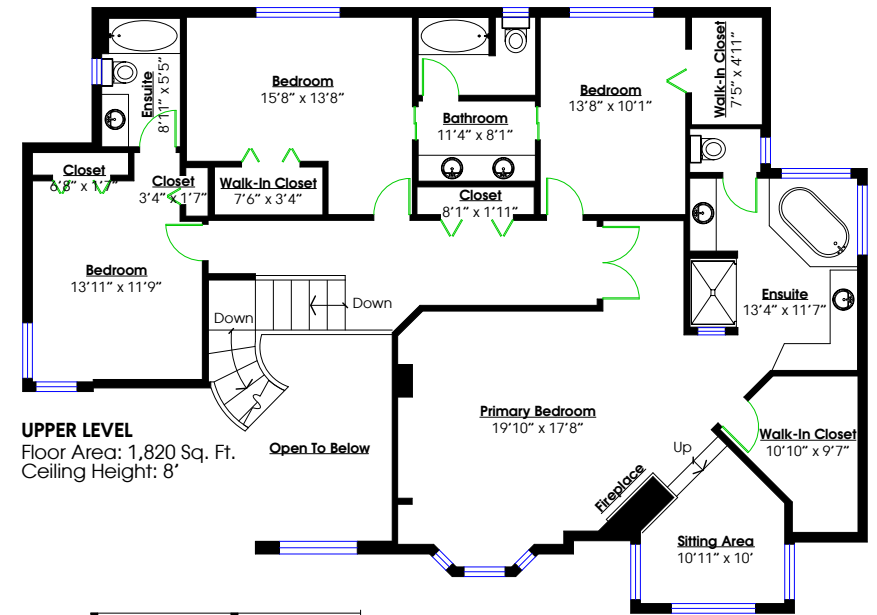
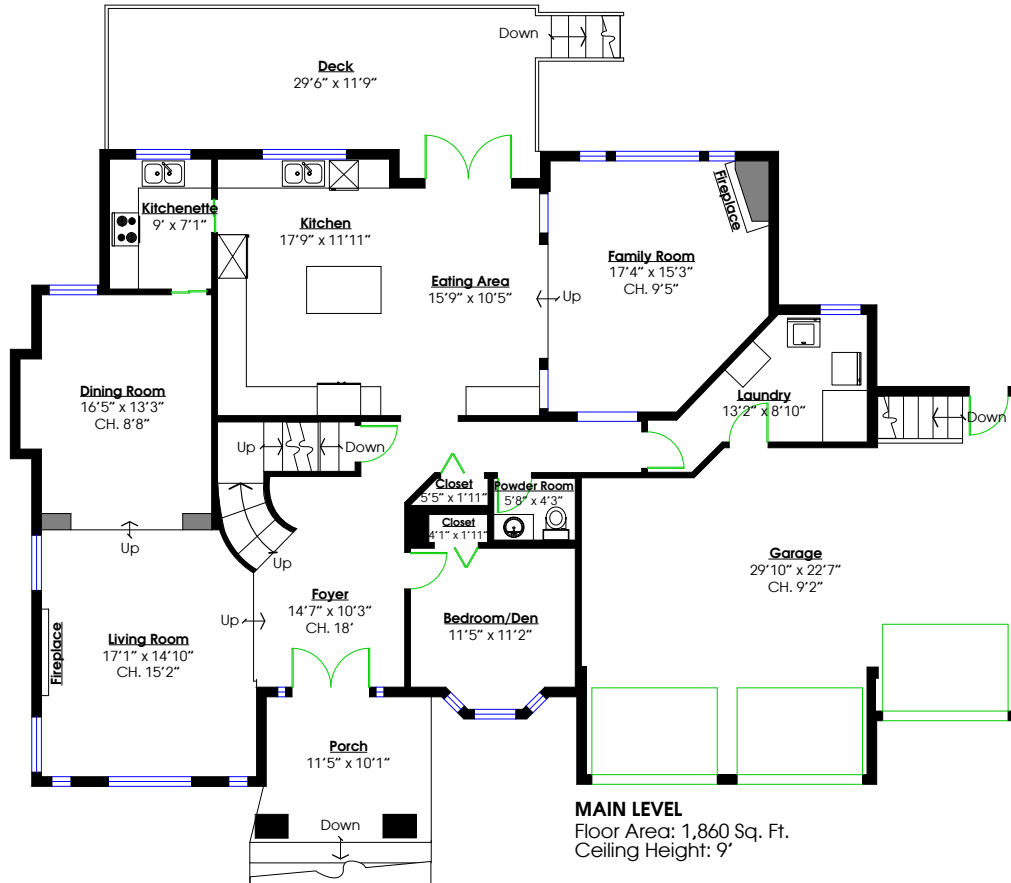
Deck: 311 sq.ft.

Porch: 118 sq.ft.

Patio: 144 sq.ft.

Lower Garage Access: 75 sq.ft.

**Total: 1,339 sq.ft.**



\*\*While all reasonable attempts have been made to ensure accuracy and the square footage and room dimensions are believed to be correct to ANSI Standards, due to the possibility of human error the information cannot be guaranteed. E&O Insured for \$1,000,000

\*\* May Include Unfinished areas