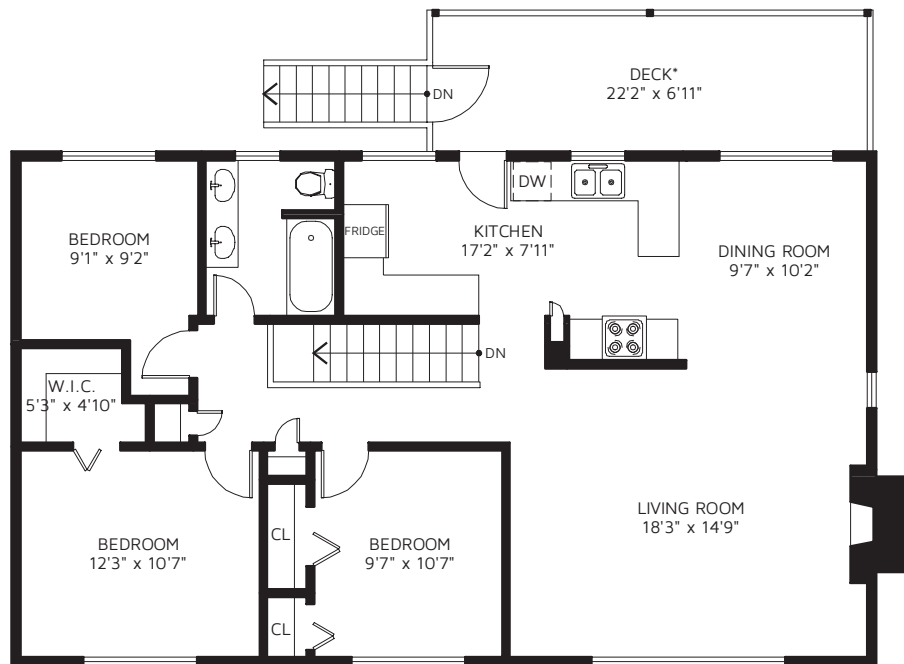
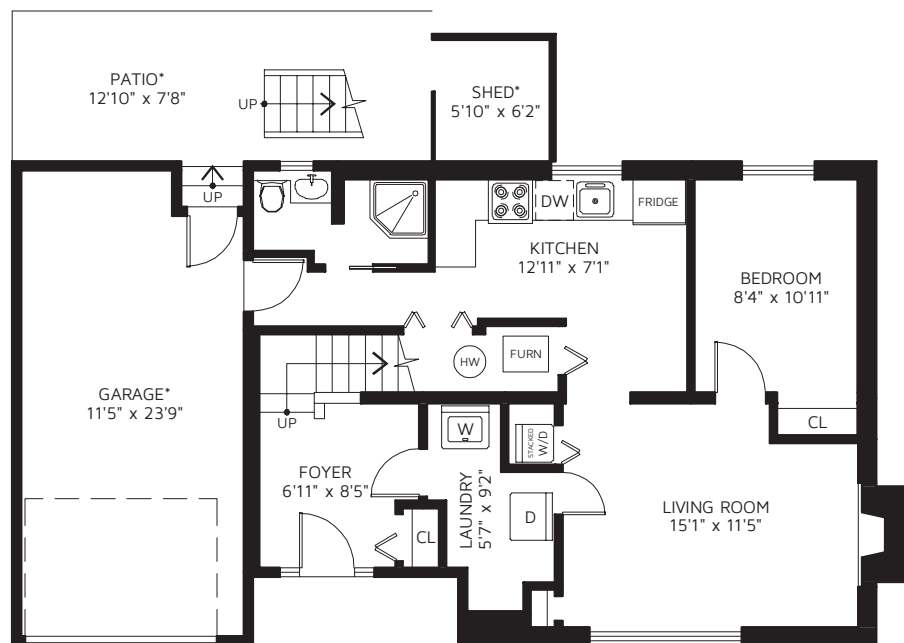
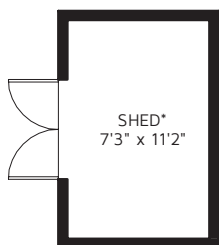


2151 CENTENNIAL AVE, PORT COQUITLAM, V3B 2E4



MAIN FLOOR



BASEMENT

MAIN FLOOR	1,159	SQ FT
BASEMENT	758	SQ FT
TOTAL FINISHED AREA	1,917	SQ FT

DECK*	164	SQ FT
PATIO*	100	SQ FT
SHED*	40	SQ FT
GARAGE*	286	SQ FT
SHED*	98	SQ FT

*NOT INCLUDED IN OVERALL SQUARE FOOTAGE