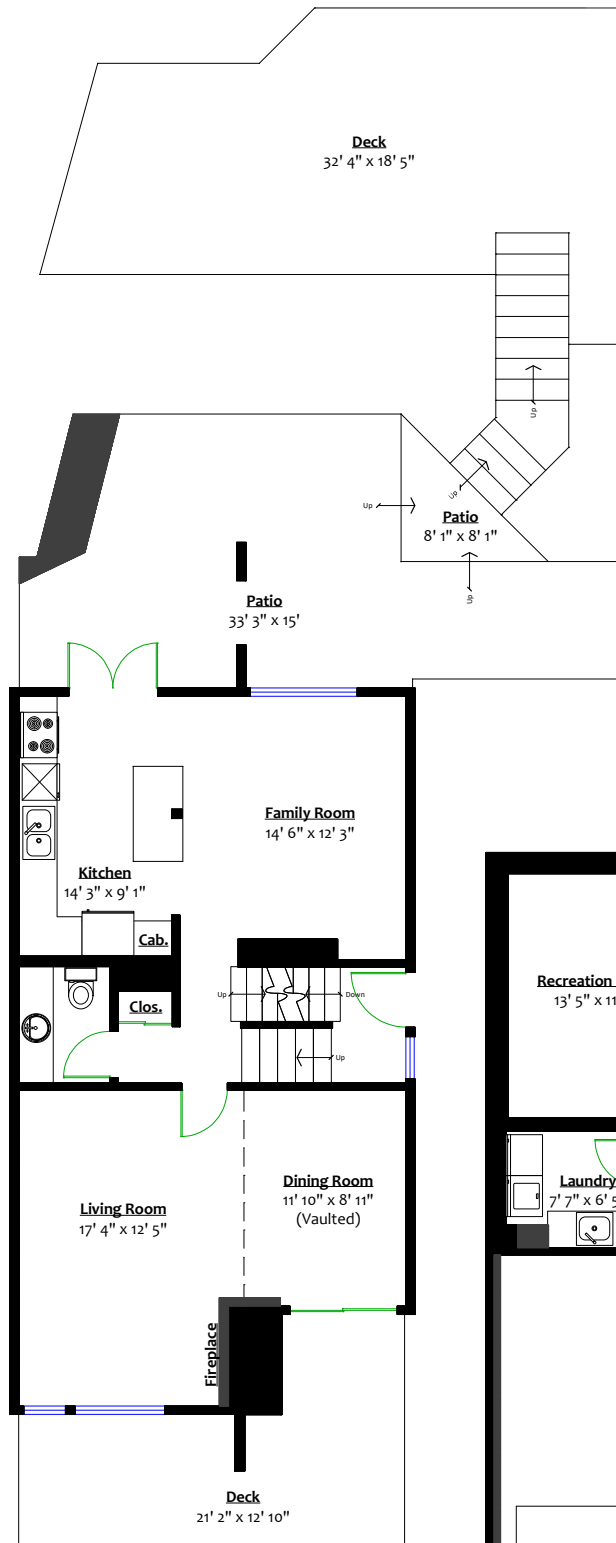
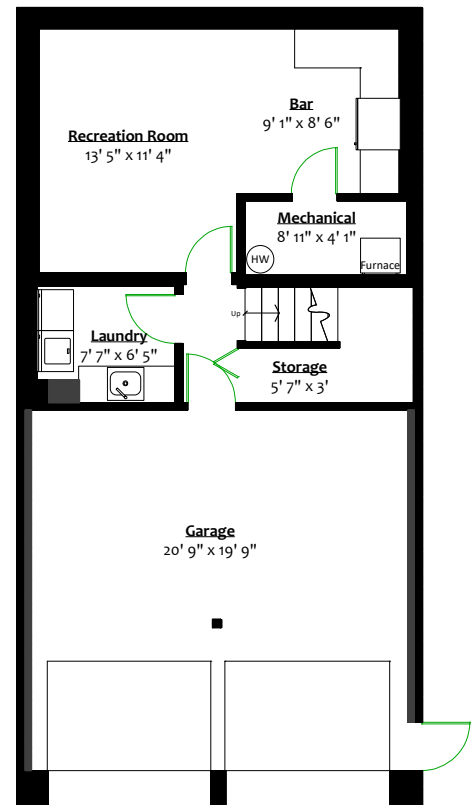


UPPER LEVEL
Floor Area: 783 Sq. Ft.
Ceiling Height: 7' 11"



MAIN LEVEL
Floor Area: 845 Sq. Ft.
Ceiling Height: 8'
Vaulted: 15' 8"



LOWER LEVEL
Floor Area: 454 Sq. Ft.
Ceiling Height: 7' 11"

527 San Remo Drive, Port Moody, B.C.

Totals**

Main Level: 845 sq. ft.
Upper Level: 783 sq. ft.
Lower Level: 454 sq. ft.
Total: 2,082 sq. ft.
Mechanical: 36 sq. ft.
Grand Total: 2,118 sq. ft.

Front Deck: 192 sq. ft.
Garage: 488 sq. ft.
Patio: 448 sq. ft.
Back Deck: 440 sq. ft.
Total: 1,568 sq. ft.

