

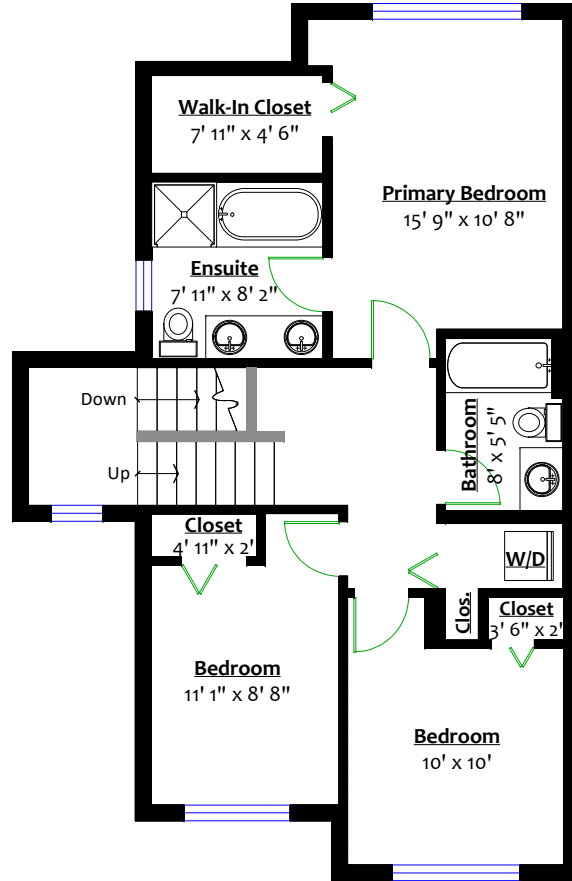
# 26 - 1125 Kensal Place, Coquitlam, B.C.

## Totals\*\*

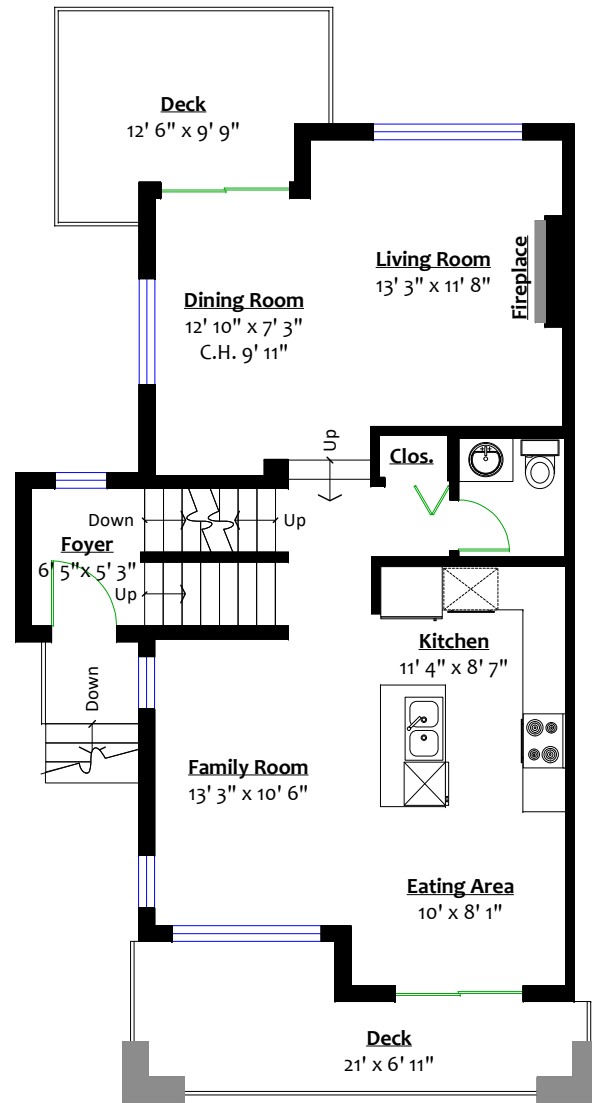
Main Level:	817 sq. ft.	Porch:	16 sq. ft.
Upper Level:	817 sq. ft.	Front Deck:	108 sq. ft.
Lower Level:	404 sq. ft.	Back Deck:	102 sq. ft.
Total:	2,038 sq. ft.	Patio:	143 sq. ft.
		Storage:	37 sq. ft.
		Garage:	458 sq. ft.
		Total:	864 sq. ft.



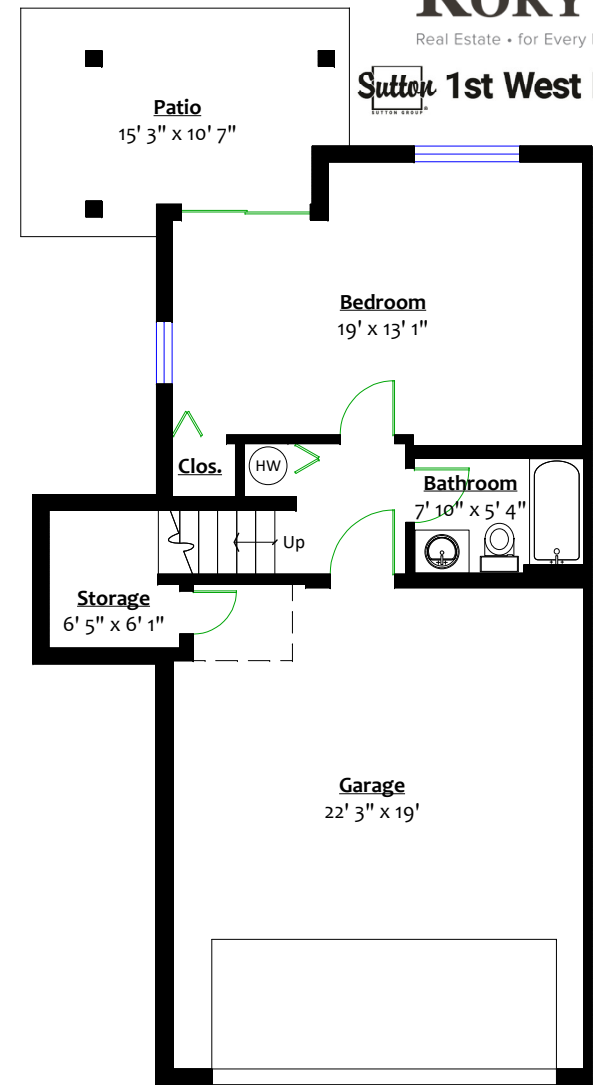
**Sutton** 1st West Realty



**UPPER LEVEL**  
Floor Area: 817 Sq. Ft.  
Ceiling Height: 8'



**MAIN LEVEL**  
Floor Area: 817 Sq. Ft.  
Ceiling Height: 9'



**LOWER LEVEL**  
Floor Area: 404 Sq. Ft.  
Ceiling Height: 8'



\*\* While all reasonable attempts have been made to ensure accuracy and the square footage and room dimensions are believed to be correct to ANSI Standards, due to the possibility of human error the information cannot be guaranteed. E&O Insured for \$1,000,000