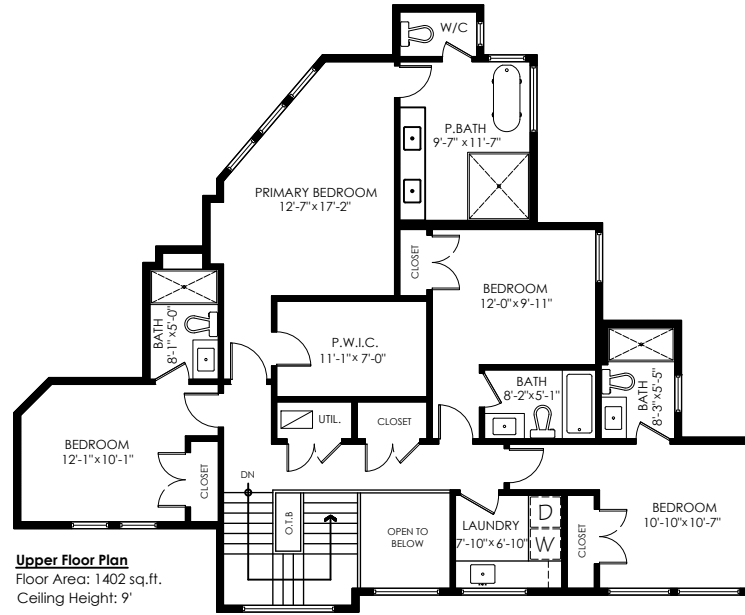


# 1403 Pipeline Pl, Coquitlam

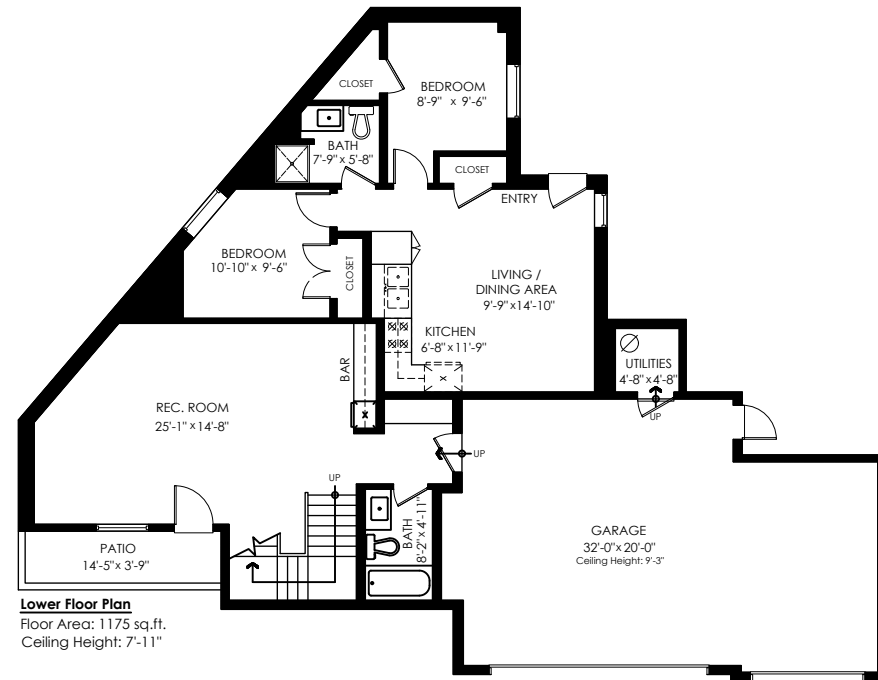
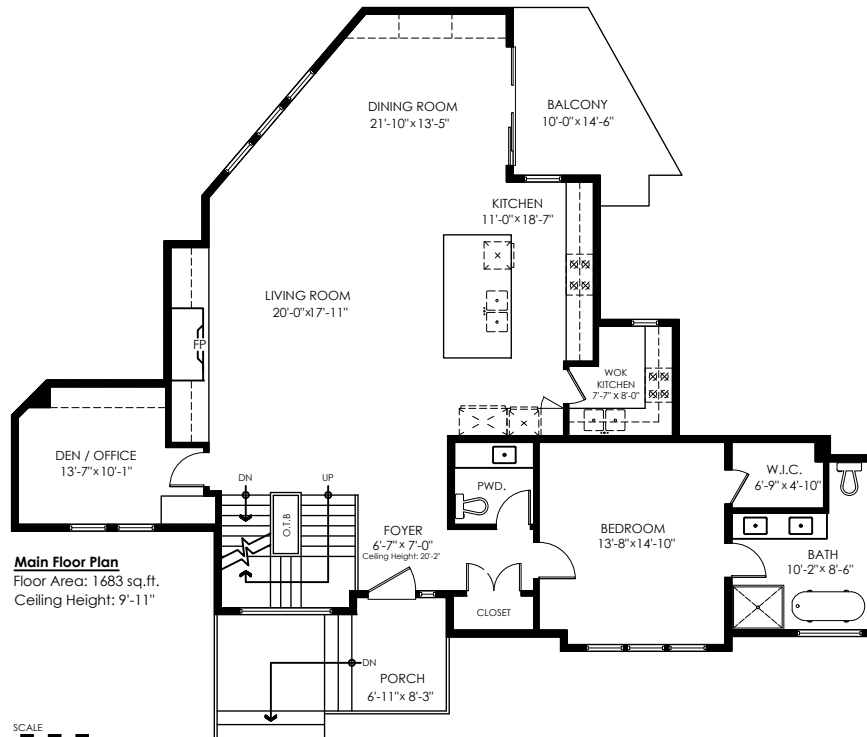
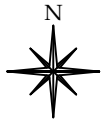


Main Floor: 1,683 sq.ft.  
Upper Floor: 1,402 sq.ft.  
Lower Floor: 1,175 sq.ft.  
**Total Livable: 4,260 sq.ft.**

Garage: 642 sq.ft.  
**Grand Total: 4,902 sq.ft.**

Patio: 55 sq.ft.  
Balcony: 118 sq.ft.  
Porch: 57 sq.ft.  
**Total Extras: 230 sq.ft.**

Open To Below: 62 sq.ft.



**MEASURED ON: (2024-08-01)**

info@pixlworks.com www.pixlworks.com 604.329.5788



E&O Insured. Total square foot calculated to gross unit area. SQFT based on interior measurements to exterior walls, not taken from original blueprints, may include unfinished area. This is for marketing purposes only and is not intended for architectural/construction use. All details, sizes & placements should be considered approximate within +/- 2% tolerance.