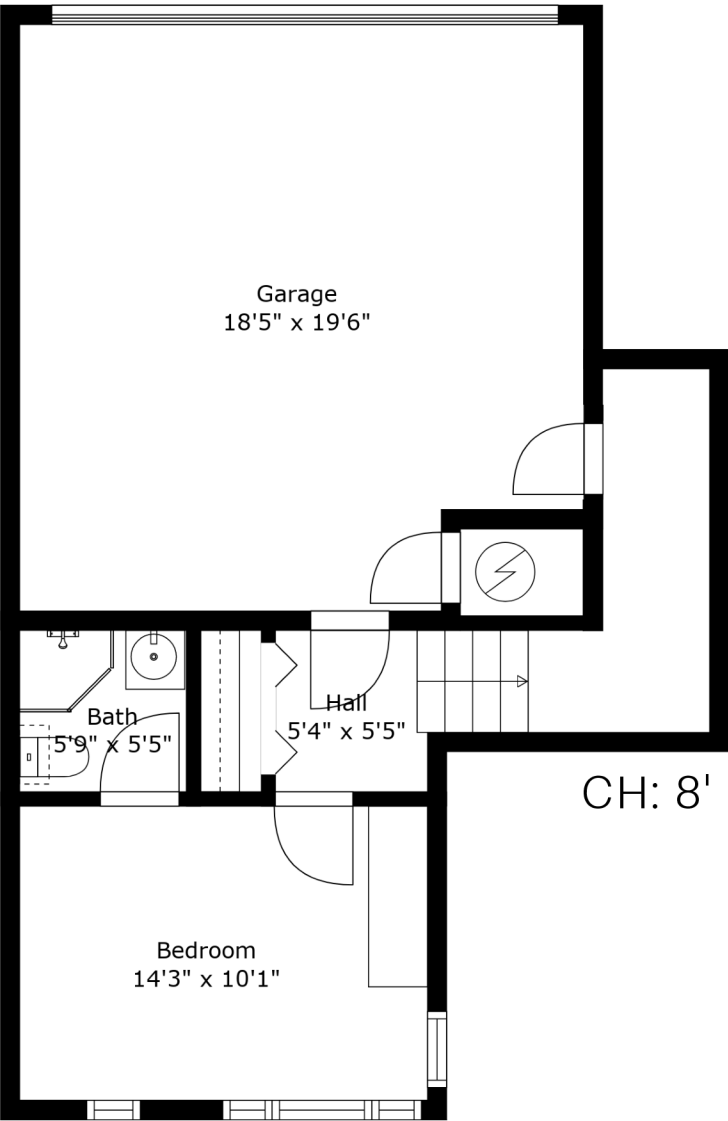


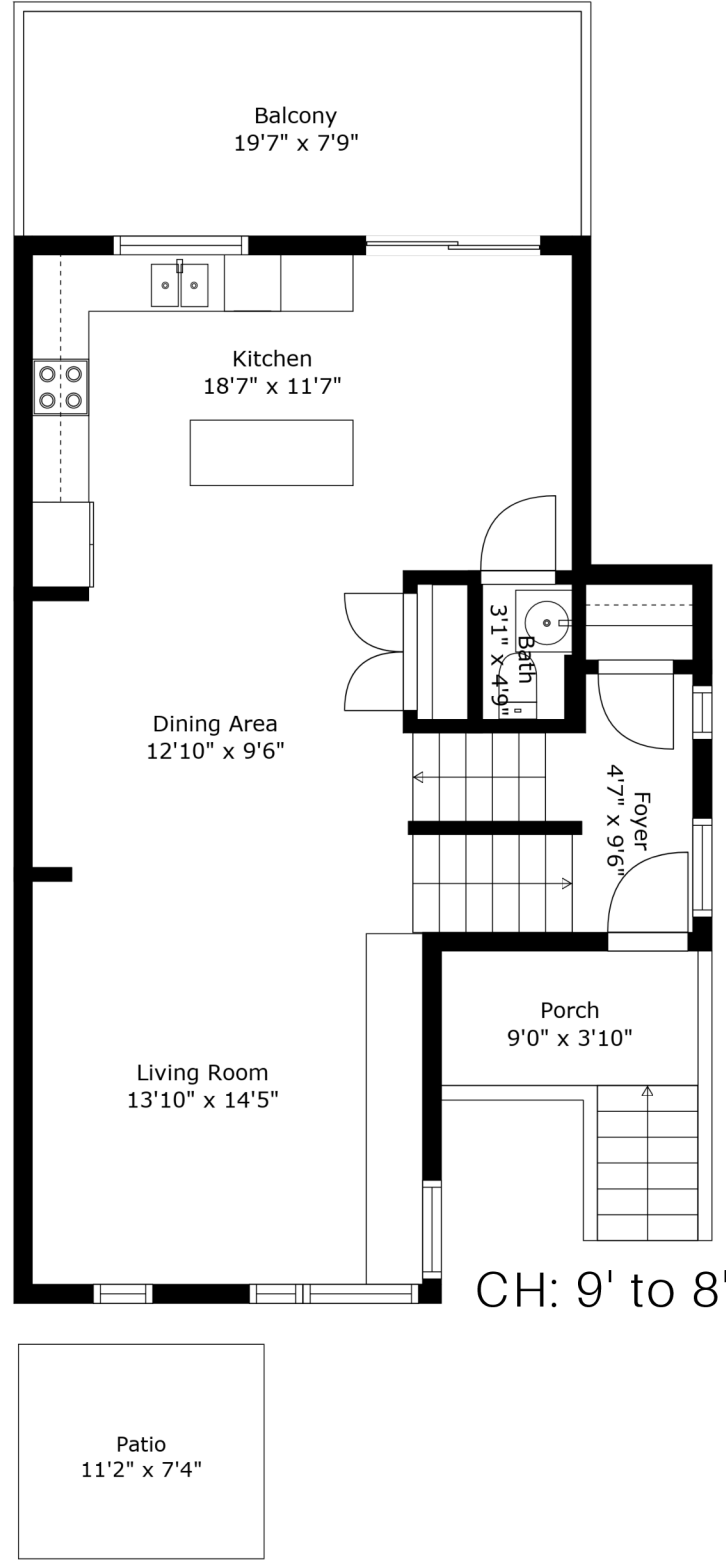
#43 2358 Ranger Lane,
Port Coquitlam, BC



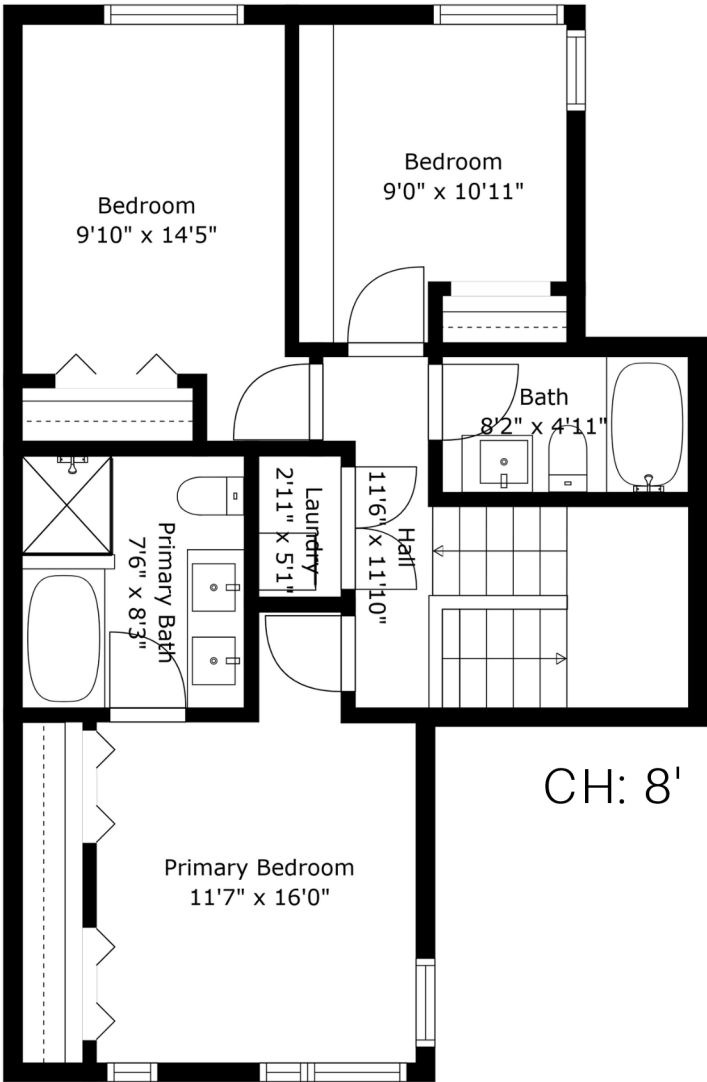
First



Second



Third



Third	741 SQ.FT	Excluded Area(s):			
Second	741 SQ.FT	Porch	35 SQ.FT	Balcony	152 SQ.FT
First	355 SQ.FT	Patio	82 SQ.FT	Garage	375 SQ.FT
Total 1837 SQ.FT		Total 644 SQ.FT			

Measurements, features, and dimensions are an approximate, and are for illustrative purposes only. Measurements, features, and dimensions should not be used for any construction purposes. Actual measurements may vary. Total Square Footage may include low-height ceilings, unheated rooms, and room labels may not be accurate and is an approximate. The floor plan may not be to scale. We release all liability. E&O Insured

