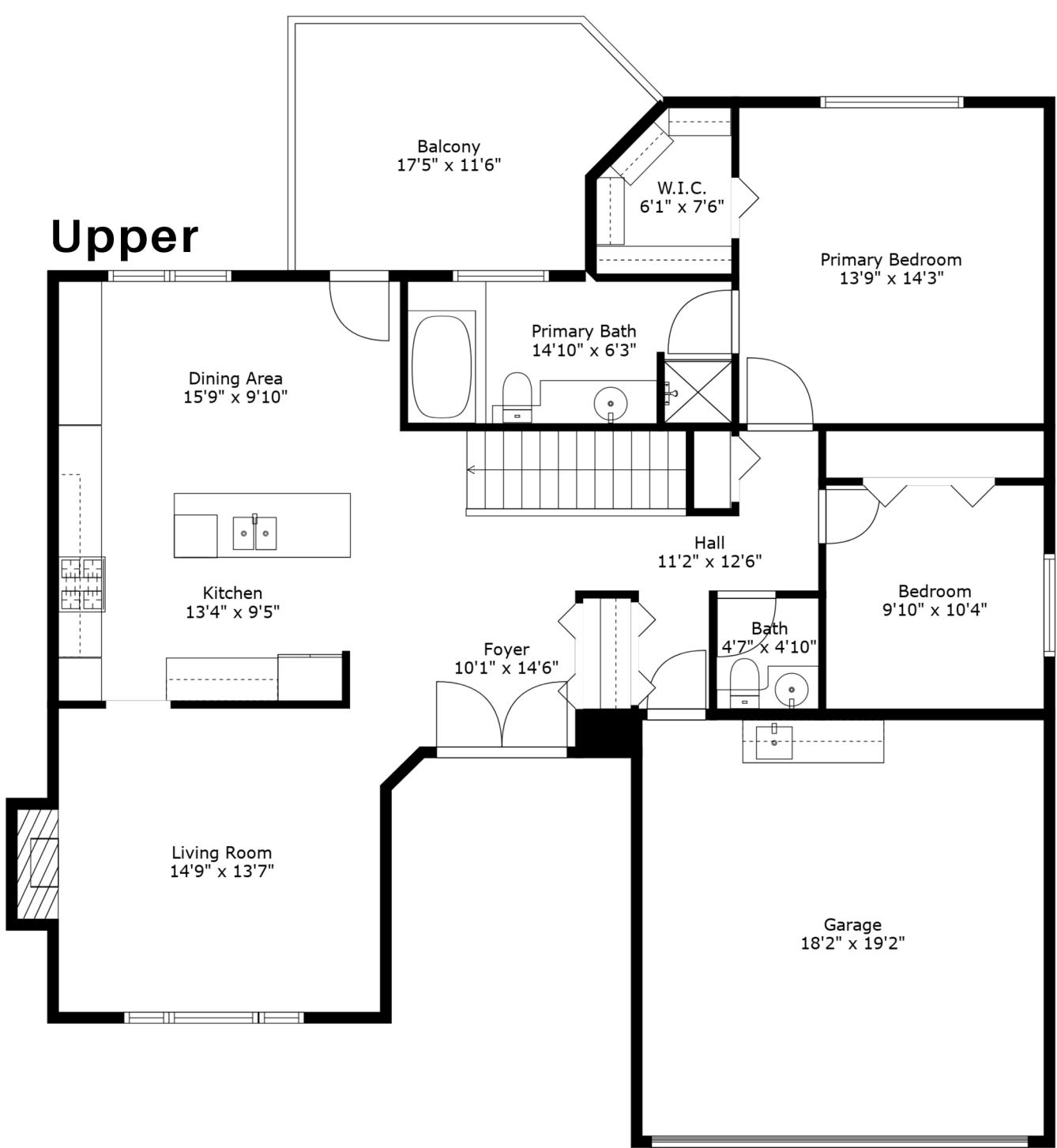
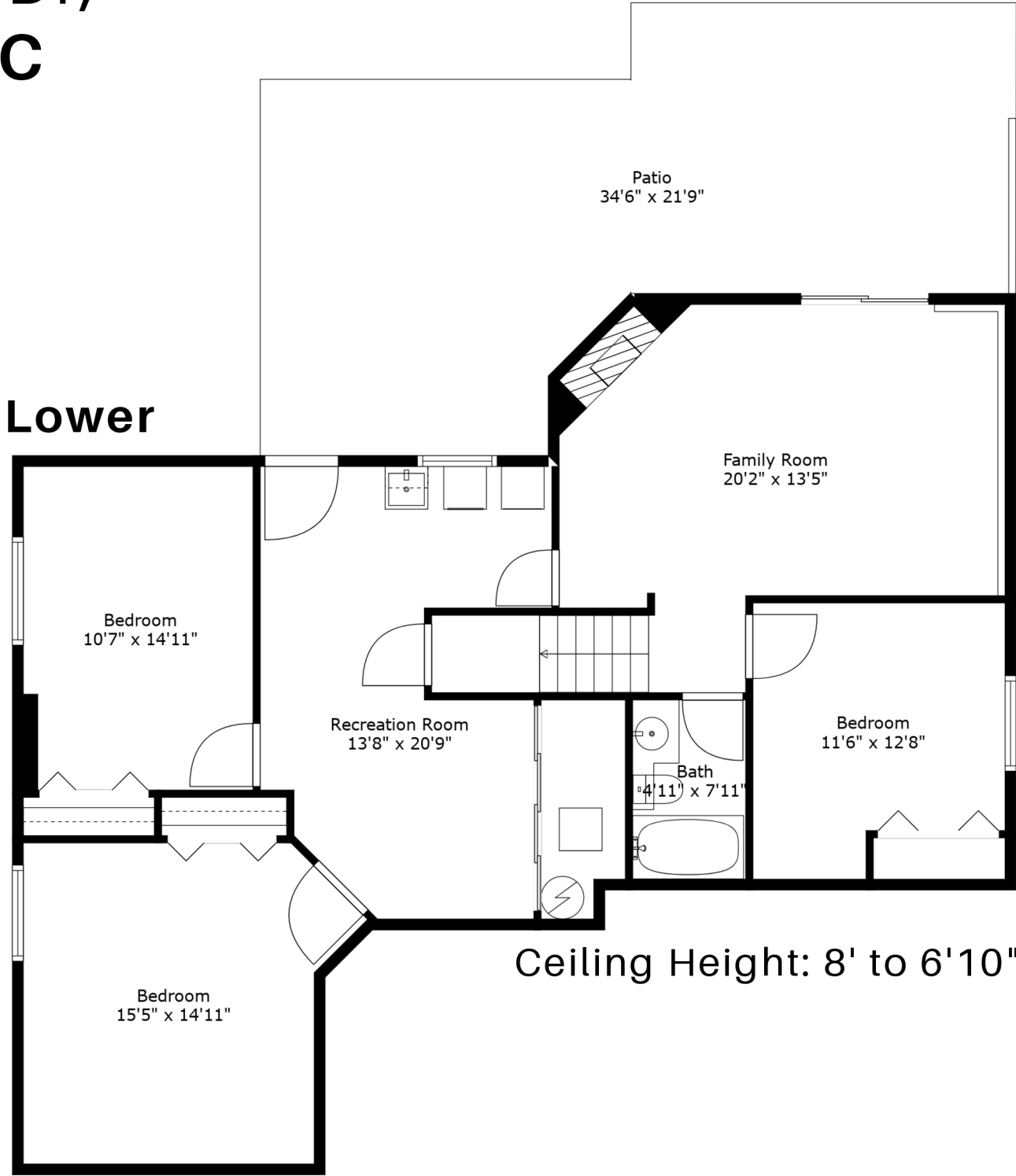
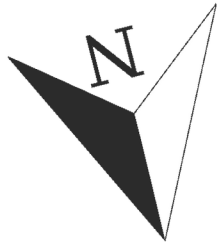


3302 Robson Dr,
Coquitlam, BC



Excluded Area(s):

Upper	1371 SQ.FT	Patio	513 SQ.FT		
Lower	1318 SQ.FT	Balcony	164 SQ.FT	Garage	377 SQ.FT
Total 2689 SQ.FT		Total 1054 SQ.FT			

Measurements, features, and dimensions are an approximate, and are for illustrative purposes only. Measurements, features, and dimensions should not be used for any construction purposes. Actual measurements may vary. Total Square Footage may include low-height ceilings, unheated rooms, and room labels may not be accurate and is an approximate. The floor plan may not be to scale. We release all liability. E&O Insured Total square footage is as per strata.

