

1419 Pipeline Pl Coquitlam

Main Floor: 1,549 sq.ft.
Upper Floor: 1,931 sq.ft.
Lower Floor: 1,606 sq.ft.
Total Livable: 5,086 sq.ft.

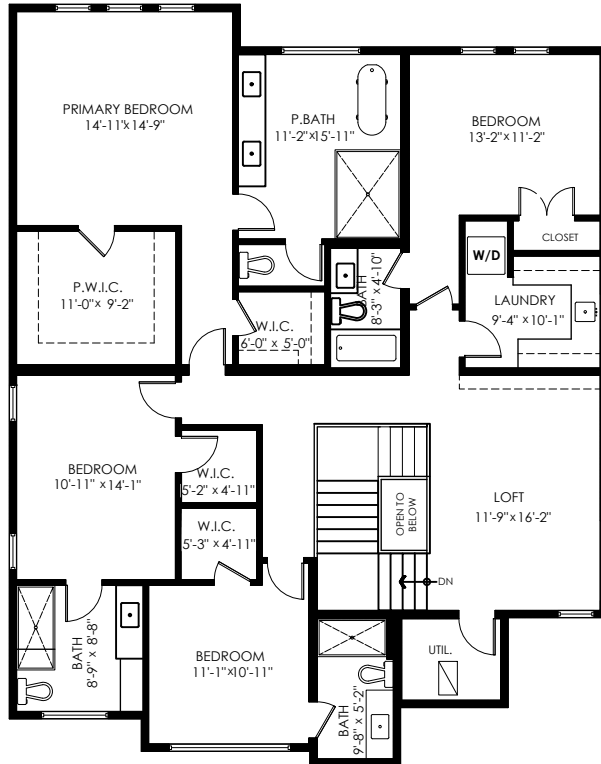
Garage: 459 sq.ft.
Grand Total: 5,545 sq.ft.

Patio: 32 sq.ft.
Balcony: 406 sq.ft.
Porch: 55 sq.ft.
Total Extras: 493 sq.ft.

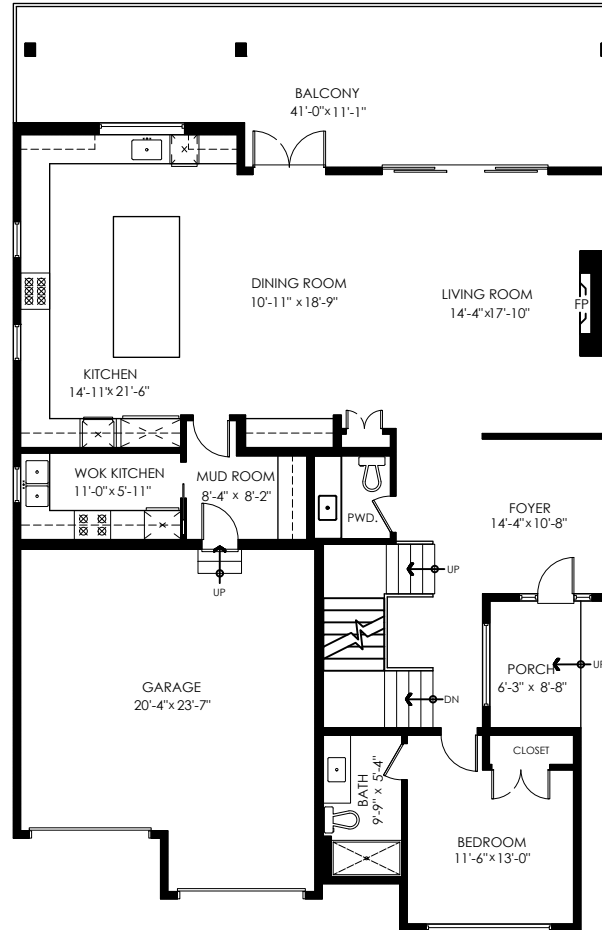
Open To Below: 15 sq.ft.



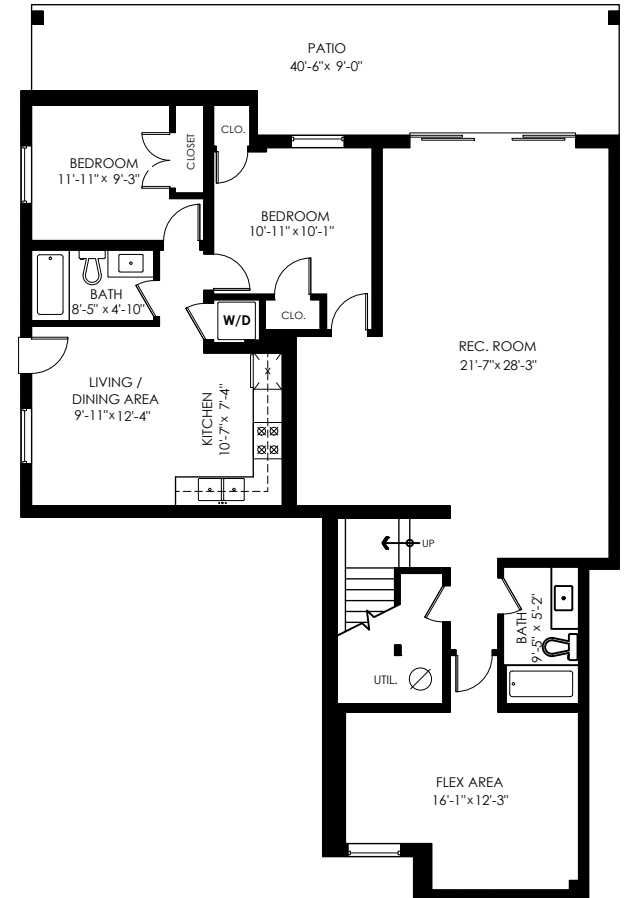
SACH GROUP



Upper Floor Plan
Floor Area: 1931 sq.ft.
Ceiling Height: 9'



Main Floor Plan
Floor Area: 1549 sq.ft.
Ceiling Height: 10'



Lower Floor Plan
Floor Area: 1606 sq.ft.
Ceiling Height: 8'



SCALE
0' 5'

E&O Insured. Total square foot calculated to gross unit area. SQFT based on interior measurements to exterior walls, not taken from original blueprints, may include unfinished area. This is for marketing purposes only and is not intended for architectural/construction use. All details, sizes & placements should be considered approximate within +/- 2% tolerance.

info@pixlworks.com www.pixlworks.com 604.329.5788

MEASURED ON: (2025-10-20)

