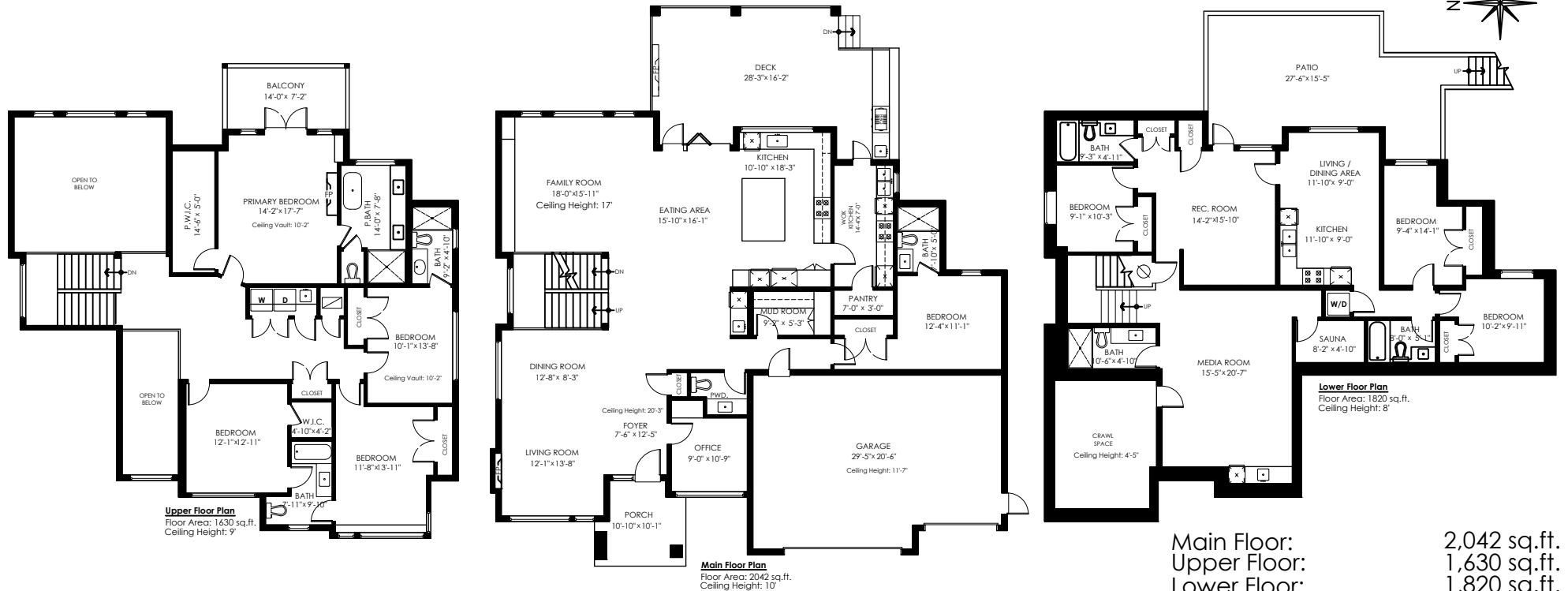


881 Porter St, Coquitlam



Main Floor: 2,042 sq.ft.
Upper Floor: 1,630 sq.ft.
Lower Floor: 1,820 sq.ft.
Total Livable: 5,492 sq.ft.

Crawl Space: 222 sq.ft.
Garage: 611 sq.ft.
Grand Total: 6,325 sq.ft.

Patio: 381 sq.ft.
Deck: 404 sq.ft.
Balcony: 101 sq.ft.
Porch: 96 sq.ft.
Total Extras: 982 sq.ft.

Open To Below: 443 sq.ft.

MEASURED ON: (2025-12-01)

info@pixlworks.com www.pixlworks.com 604.329.5788



E&O Insured. Total square foot calculated to gross unit area. SQFT based on interior measurements to exterior walls, not taken from original blueprints, may include unfinished area. This is for marketing purposes only and is not intended for architectural/construction use. All details, sizes & placements should be considered approximate within +/- 2% tolerance.

SCALE
0' 5'