



**MOVE-IN INCENTIVE**  
**One month of**  
**free Basic Rent**

## FOR SUB-LEASE

Unit 705 - 20381 62 Avenue  
Langley, BC

## Industrial Warehouse & Office Unit

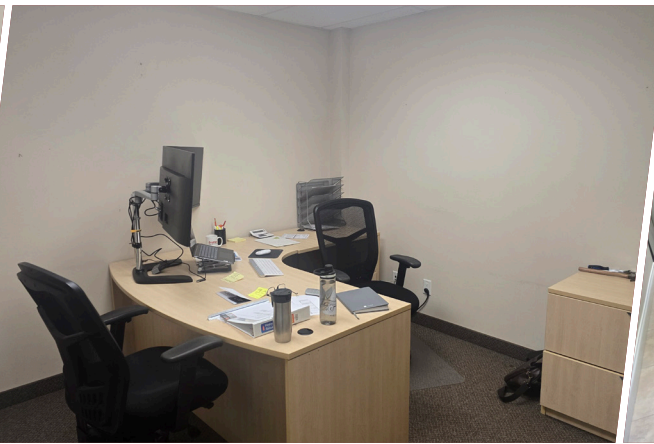
- » Outstanding Central Location
- » M-2 Zoning
- » Turn-Key Office Improvements
- » Sub-Lease Term Expires June 29, 2028

**UPDESH GREWAL**  
Personal Real Estate Corporation

**JAMIE SCHREDER**  
Personal Real Estate Corporation

**MAGNUS HEANEY**  
Commercial REALTOR®





## PROPERTY INFO

### RENTABLE AREA

Warehouse: 920 ft<sup>2</sup>  
 Office: 2,268 ft<sup>2</sup>  
 Total: 3,188 ft<sup>2</sup>

### BASIC RENT

\$18.00 ft<sup>2</sup> / per annum

### ADDITIONAL RENT

\$5.04 / ft<sup>2</sup> / per annum

### EST. GROSS RENT

\$6,120.96 / month + GST

## ZONING

### M-2

(General Industrial Zone)

Intended to accommodate light industrial and service-oriented uses.

## POWER SUPPLY

3-Phase / 225-AMP / 240-Volt

Tenant to verify power supply is sufficient for its intended use



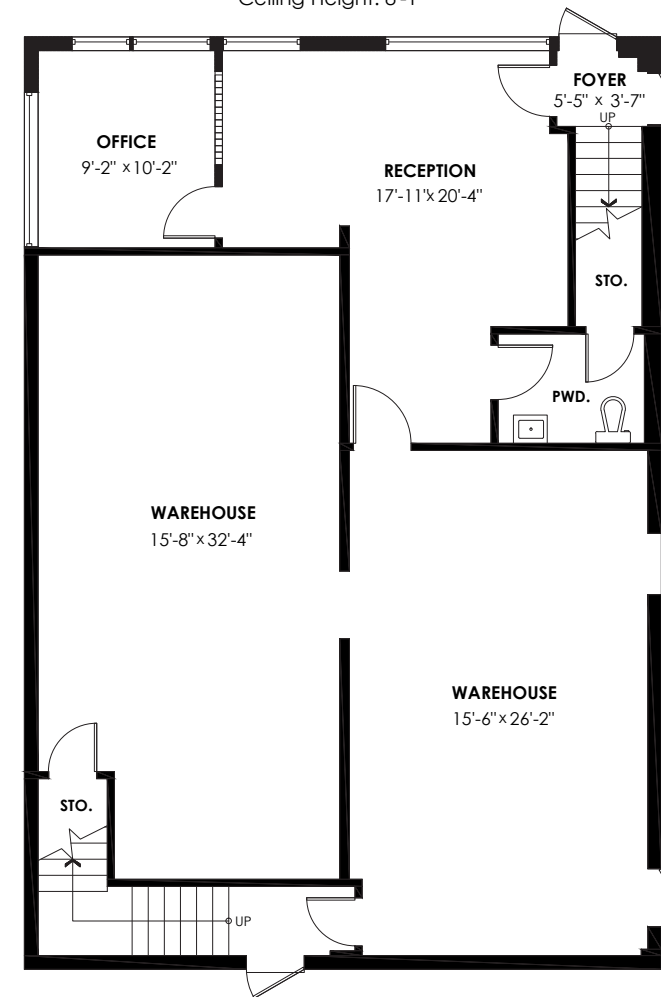
### Unit 705 - 20381 62 Avenue (Langley, BC)

This 3,188 square foot industrial office and warehouse strata unit is conveniently located just one block away from Highway 10 in the downtown core of Langley. The unit is comprised of 920 square feet of warehouse space with 8' clear ceiling height, and 2,268 square feet of office space split over two floors. 3-Phase, 225-AMP, 240-Volt power supply and M-2 zoning allow for a wide range of potential uses, however; please note that the strata does not allow for any additional auto mechanic or body shops. This is a sub-lease which would expire on June 29, 2028.

- » 2% Annual Basic Rent Increases
- » Turn-Key Office Improvements
- » Sub-Lease Term Expires June 29, 2028

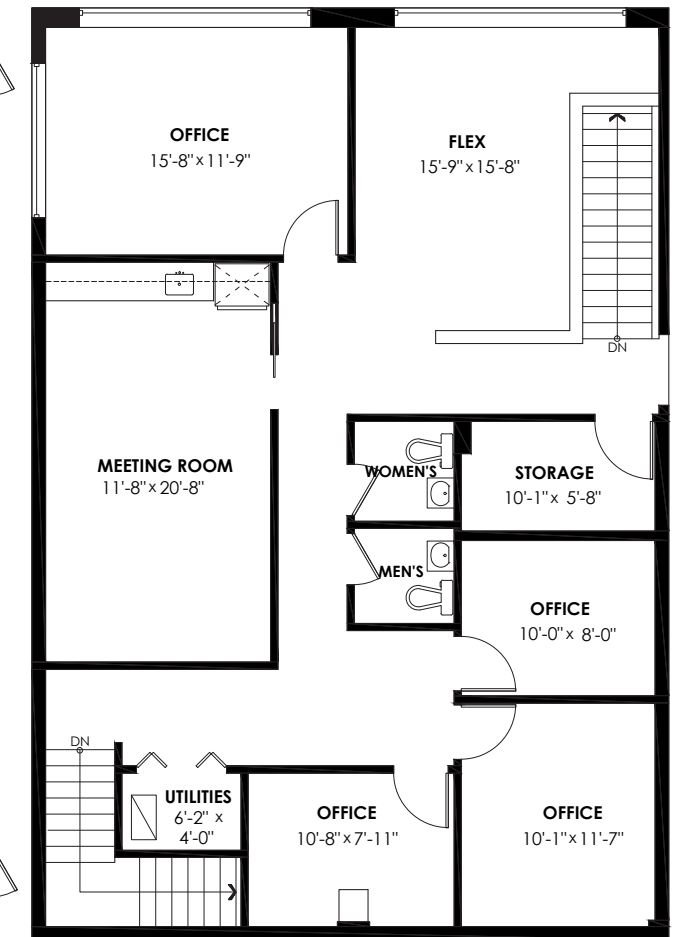
### Ground Floor Plan

Floor Area: 1594 sq.ft.  
 Ceiling Height: 8'-1"



### Second Floor Plan

Floor Area: 1594 sq.ft.  
 Ceiling Height: 7'-11"



## FLOORPLAN & MEASUREMENTS

Please note that all measurements are approximate and should be verified by the tenant if deemed important to them.



## DRIVE TIMES

<b>CLOVERDALE</b>	10 MINS
<b>MAPLE RIDGE</b>	18 MINS
<b>SURREY</b>	25 MINS
<b>WHITE ROCK</b>	25 MINS
<b>ABBOTSFORD</b>	30 MINS
<b>DELTA</b>	35 MINS
<b>BURNABY</b>	39 MINS

**JAMIE SCHREDER**  
Personal Real Estate Corporation

**UPDESH GREWAL**  
Personal Real Estate Corporation

**MAGNUS HEANEY**  
Commercial REALTOR®

**LORI NICOL**  
Unlicensed Assistant



604-530-0231

COMMERCIAL@SCHREDERS.CA

WWW.SCHREDERS.CA