

RYAN BLUE

REAL ESTATE

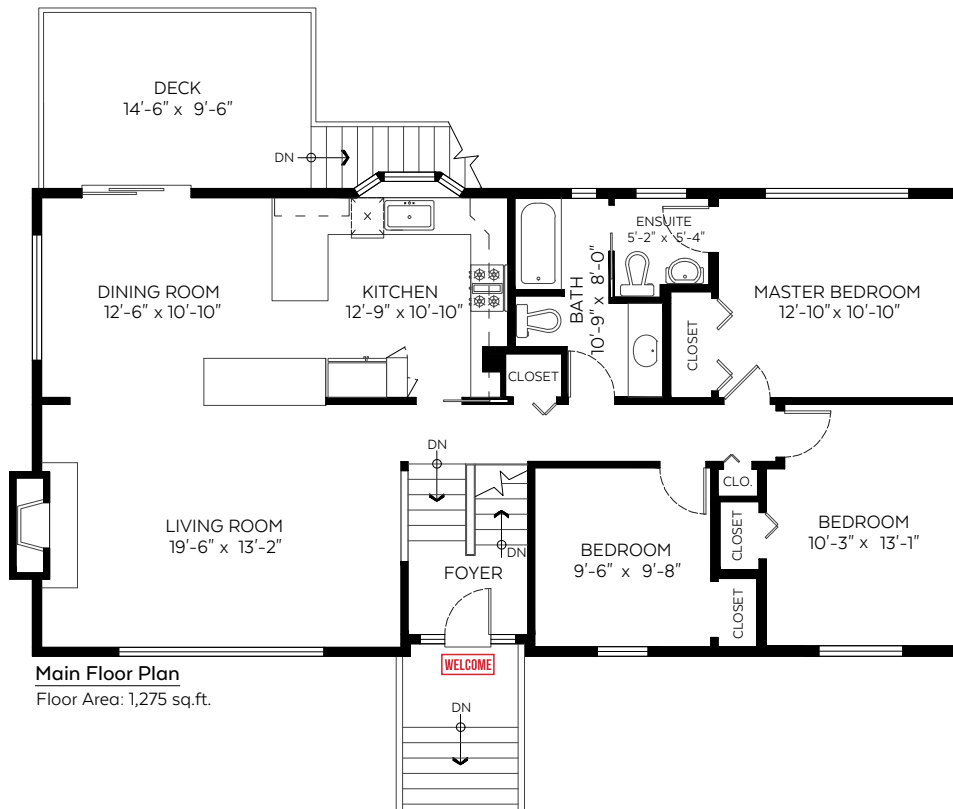
604.726.6412 | ryanblue@remax.net

1685 58A Street,
Tsawwassen, B.C.

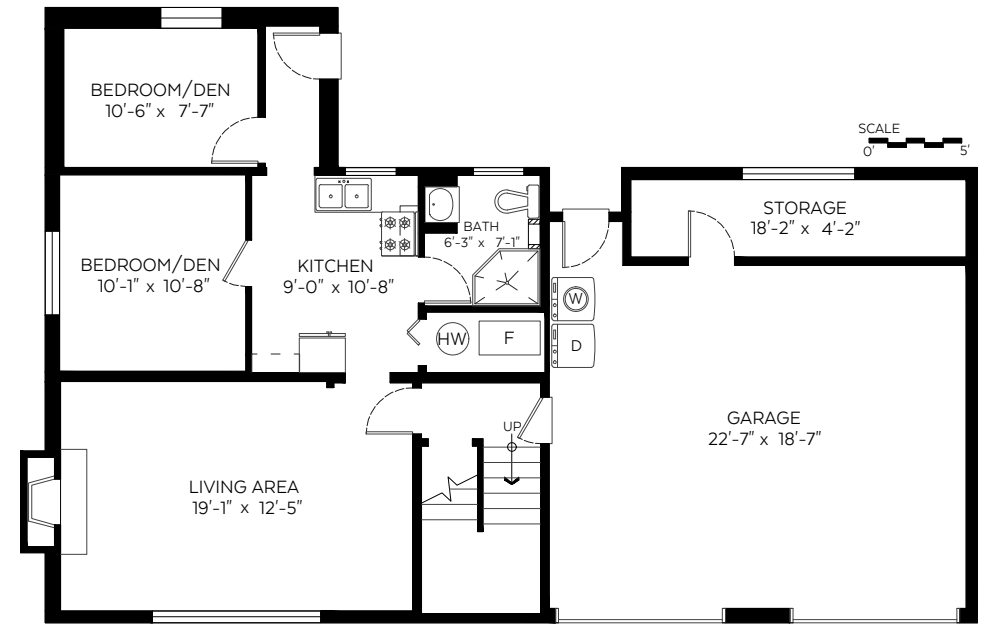
Main Floor:	1,274 sq.ft.
Lower Floor:	810 sq.ft.
Total:	2,084 sq.ft.

Auxiliary Area

Garage/Storage:	562 sq.ft.
Deck:	138 sq.ft.



Main Floor Plan
Floor Area: 1,275 sq.ft.



Lower Floor Plan
Floor Area: 810 sq.ft.



Measured on: April 26, 2019

The floor plan is not suitable for architectural/construction and is covered under E&O. © Excelsior Measuring Inc. 2019. All rights reserved for Excelsior Measuring Inc. Users shall not publish and distribute such material (in whole or in part) and/or incorporate it in other works in any form.

