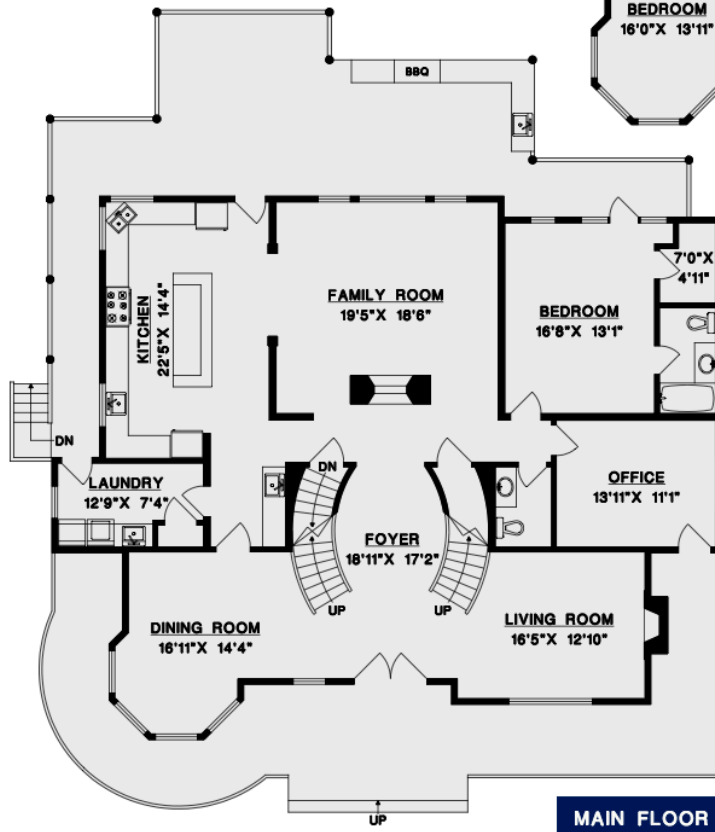
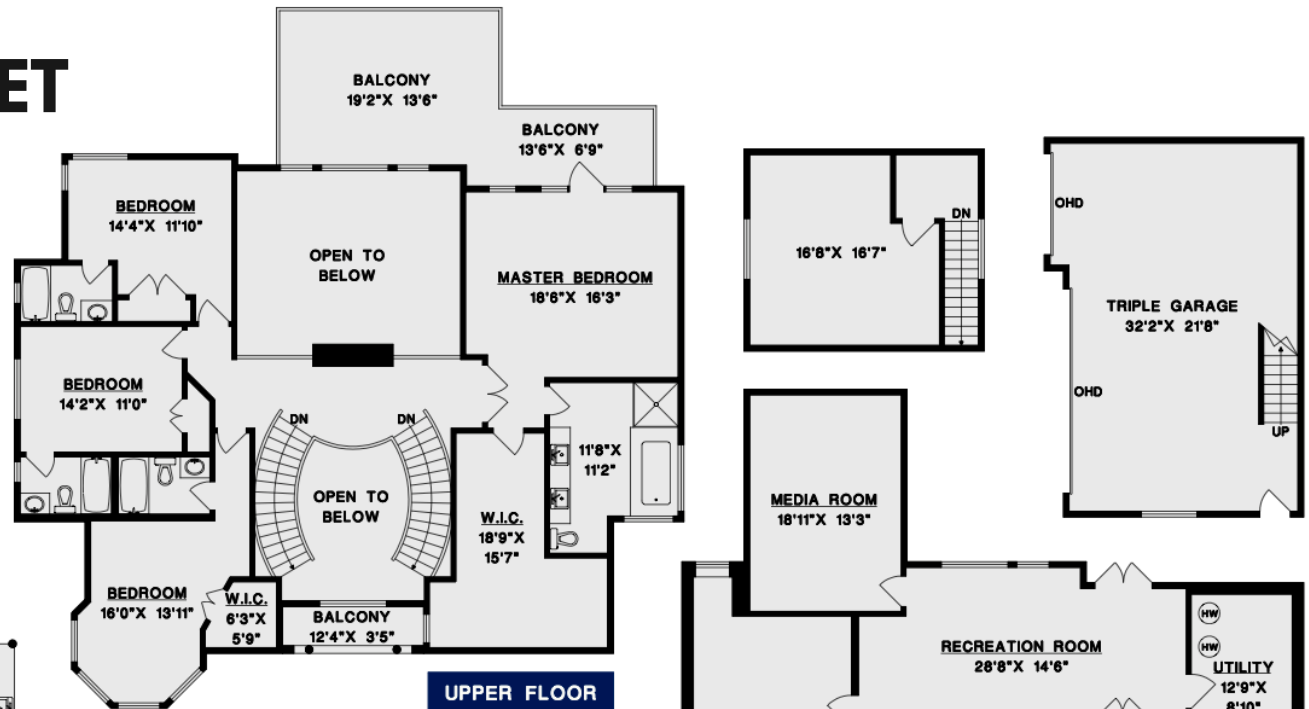


5615 121A STREET

Surrey, BC V3X 0A4



UPPER FLOOR	1837	SQ. FT.
MAIN FLOOR	2304	SQ. FT.
LOWER FLOOR	2520	SQ. FT.
FINISHED AREA	6661	SQ. FT.

GARAGE	716	SQ. FT.
LOFT	371	SQ. FT.
BALCONY	355	SQ. FT.
DECK	676	SQ. FT.
PORCH	580	SQ. FT.

