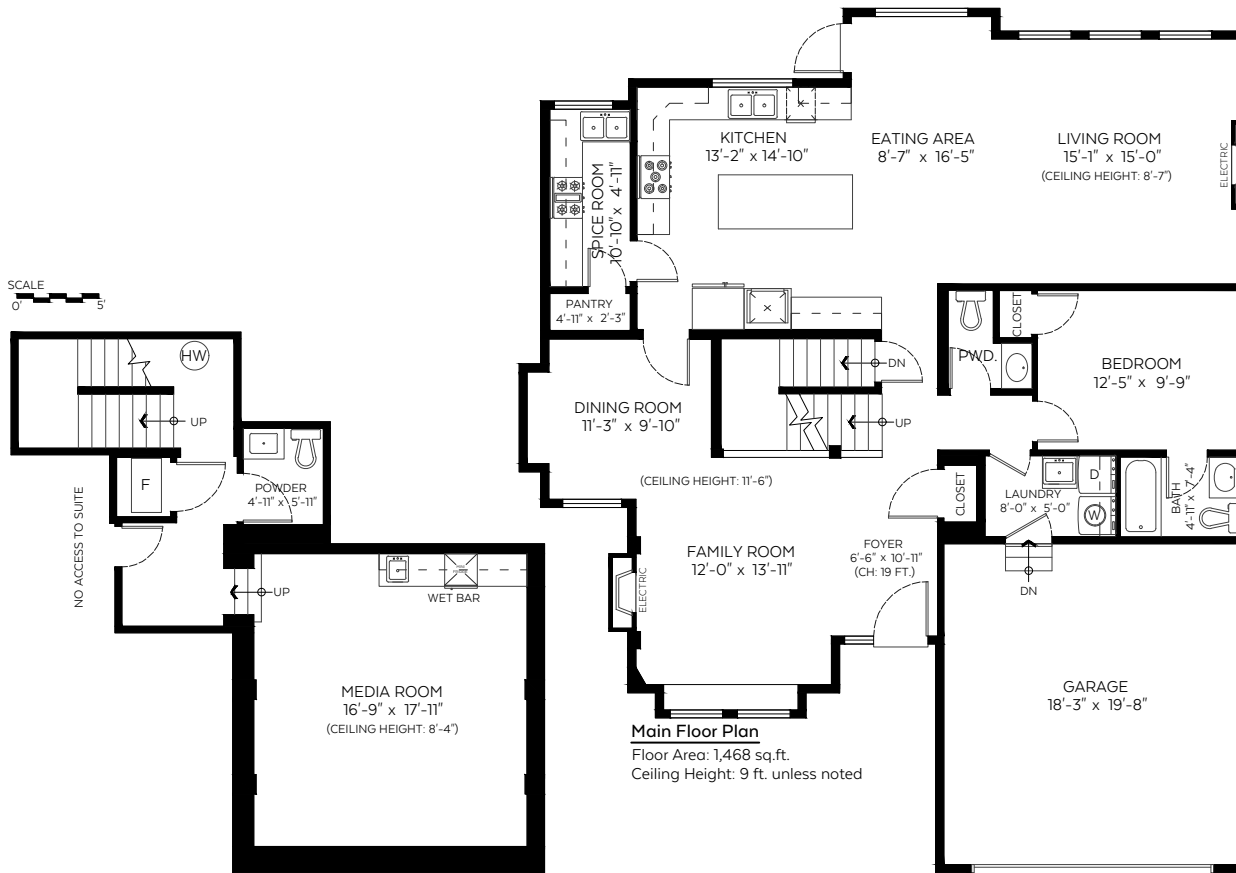


15938 105 Avenue, Surrey, B.C.

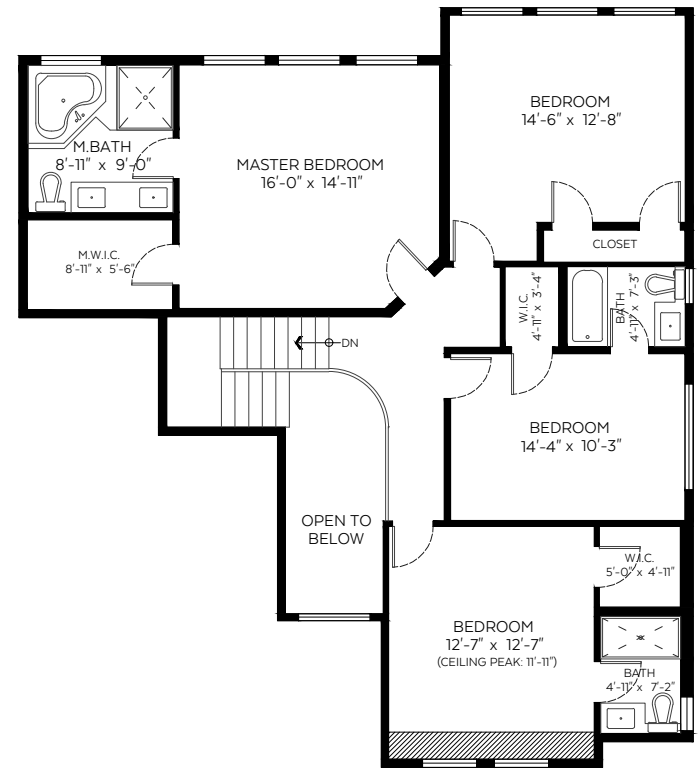
| | |
|----------------|---------------------|
| Main Floor: | 1,468 sq.ft. |
| Upper Floor: | 1,282 sq.ft. |
| Lower Floor:* | 615 sq.ft. |
| Total: | 3,365 sq.ft. |
| Open To Below: | 95 sq.ft. |

| |
|-----------------------|
| Auxiliary Area |
| Garage: 383 sq.ft. |

*SQFT DOES NOT INCLUDE NO ACCESS AREA



Main Floor Plan
 Floor Area: 1,468 sq.ft.
 Ceiling Height: 9 ft. unless noted



Upper Floor Plan
 Floor Area: 1,282 sq.ft.
 Ceiling Height: 9 ft. unless noted

Lower Floor Plan
 Accessed Floor Area: 615 sq.ft.
 Ceiling Height: 9 ft. unless noted

Measured on: September 28, 2020



The floor plan is not suitable for architectural/construction and is covered under E&O. © Excelsior Measuring Inc. 2020. All rights reserved for Excelsior Measuring Inc. Users shall not publish and distribute such material (in whole or in part) and/or incorporate it in other works in any form.