

THE MILLS TEAM

is proud to present

# 66 SPRINGHOUSE SQUARE



[66Springhouse.com](http://66Springhouse.com)



## WELCOME HOME

### Summer Fun on Springhouse Square!

A rare opportunity to own a stunning four-bedroom, three-bathroom end-unit townhome on this highly coveted, family-friendly street—first offering in years! If you love to entertain, this is your dream come true. The sun-drenched, south-facing backyard is an absolute showstopper, featuring a full-sized pool perfect for summer fun, gatherings, and hours of enjoyment with family and friends.

Inside, this immaculately maintained and tastefully updated home impresses with a modern kitchen, stylishly renovated bathrooms, and upgraded flooring throughout. The flexible four-bedroom layout easily adapts to your lifestyle—whether you need extra space for a home office, guests, or growing family.

Located in a highly sought-after school district, including Sir Samuel B. Steele Junior P.S., Sir Ernest Macmillan Senior P.S., and Dr. Norman Bethune Collegiate, this home is perfect for families looking to settle into a vibrant community with top-notch education options. Enjoy peace of mind on a quiet, child-friendly street with wonderful neighbours and a strong sense of community. Just unpack, settle in, and let the good times roll—your poolside paradise awaits!



## UPDATES & IMPROVEMENTS

### SINCE 2020:

- Updated all 3 bathrooms
- New vinyl flooring on second floor and lower level
- Replaced porch ceiling, soffits, fascia, frieze board, downpipe and eavestroughs
- Refurbished pool deck
- Interior painting
- Annual landscaping





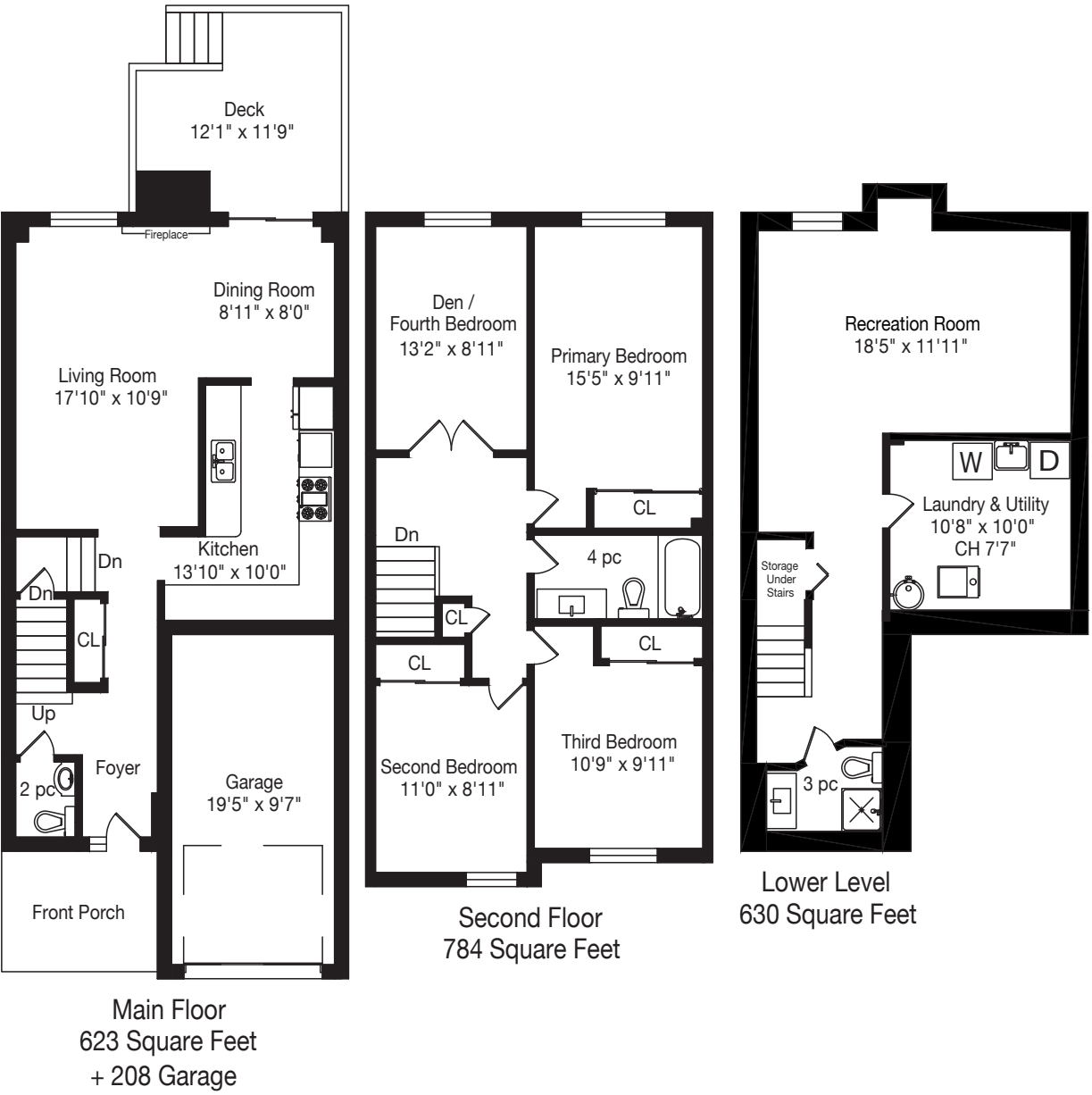
ADDITIONAL INFO

- Property Taxes:** \$4,170.10 (Annual in 2025)
- Lot Size:** 25 feet x 130 feet
- Parking:** Attached single car garage plus private driveway with parking for 1 car
- Possession:** 60 Days/TBD
- Heating:** Forced air gas furnace and central air conditioning
- Utility Costs:** *Electricity:* Approx. \$205/month (2024)  
*Gas:* Approx. \$98/month (2024)  
*Water:* Approx. \$129/month 2024)
- Inclusions:** Stainless Steel kitchen appliances - LG refrigerator/freezer, Kenmore gas stove, dishwasher and Samsung built-in microwave. LG Direct Drive washer and dryer, all electric light fixtures, all window shutters (curtains and drapery tracks & rods excluded below), all built-in and attached shelving, central vacuum and all related equipment, all parts of gas furnace and central air conditioner, exterior gas line hookup for BBQ, inground gas heated pool and all related equipment and hoses (vacuum, heater (2019), pump (2024), liner (2020) and filter (2017)), winter pool cover, pool brush, pool cleaning net, all pool chemicals in seller's possession at the time of completion, backyard awning (as-is condition), rubber art piece and two signs on rear fence, 3 rod iron hanging flower baskets, backyard lights, storage container at side of house, electric garage door opener (keypad access) and City of Toronto garbage and recycling containers
- Exclusions:** Curtains and drapery tracks & rods in the third bedroom and den/fourth bedroom and gas BBQ
- Rental Equipment:** Hot water tank (approx. \$42.29/month)

A Home Inspection Report dated June 24, 2025, is available for your convenience and information purposes only. Any reliance on this Report and its contents is at the Buyer's own discretion.

E & OE







PUBLIC SCHOOLS

Your neighbourhood is part of a community of Public Schools offering Elementary, Middle, and High School programming.

ÉS Étienne-Brûlé

Designated Catchment School  
Grades 7 to 12  
300 Banbury Rd

Dr Norman Bethune Collegiate Institute

Designated Catchment School  
Grades 9 to 12  
200 Fundy Bay Blvd

Sir Ernest MacMillan Senior Public School

Designated Catchment School  
Grades 7 to 8  
149 Huntsmill Blvd

ÉE Laure-Rièse

Designated Catchment School  
Grades PK to 6  
339 Alton Towers Cir

Sir Samuel B. Steele Junior Public School

Designated Catchment School  
Grades PK to 6  
131 Huntsmill Blvd

ALTERNATIVE & SPECIAL SCHOOLS

Nearby alternative and special education schools include:

Msgr Fraser College (Midland Campus)

Grades 9 to 12  
2900 Midland Ave

North East Secondary Alternative School

Grades 10 to 12  
2900 Don Mills Rd



CATHOLIC SCHOOLS

Your neighbourhood is part of a community of Catholic Schools offering Elementary, Middle, and High School programming.

ÉSC Monseigneur-de-Charbonnel

Grades 7 to 12  
110 Drewry Ave

ÉEÉ Sainte-Madeleine

Grades PK to 6  
1 Ness Dr

St. Henry Catholic School

Grades PK to 8  
100 Bamburgh Cir

Mary Ward Catholic Secondary School

Grades 9 to 12  
3200 Kennedy Rd

PRIVATE SCHOOLS

The private schools nearest to you are:



William Academy Scarborough

Grades 5 to 12  
3761 Victoria Park Ave

King's Academy

Grades 9 to 12  
1033 McNicoll Ave

McCanny Secondary School

Grades 9 to 12  
1051 McNicoll Ave

Alathena International Academy

Grades 9 to 12  
1065 McNicoll Ave



Disclaimer: These materials have been prepared for the HoodQ Homebuyer Hub and are not intended to solicit buyers or sellers currently under contract with a brokerage. By accessing this information you have agreed to our terms of service, which are hereby incorporated by reference. This information may contain errors and omissions. You are not permitted to rely on the contents of this information and must take steps to independently verify its contents with the appropriate authorities (school boards, governments etc.). As a recipient of this information, you agree not to hold us, our licensors or the owners of the information liable for any damages, howsoever caused.



## THE MILLS TEAM



AN EXCEPTIONAL REAL ESTATE EXPERIENCE

TheMillsTeam.ca

Team@TheMillsTeam.ca

416.443.0300

Lauren Rebecca\*, Laura Lee\*, Tonille Giovis\*, Katie Mills\*, Sue Mills\*, Sarah O'Neill\*, Breanna Rothe, Priyanka Mehta, Christine Sweeny\*, Merida Lake\* | \* SALES REPRESENTATIVE

66Springhouse.com

**ROYAL LEPAGE** Signature  
INDEPENDENTLY OWNED & OPERATED REAL ESTATE BROKERAGE