

THE MILLS TEAM

is proud to present

---

1555 FINCH AVENUE EAST

SUITE 1907



[1555Finch1907.com](http://1555Finch1907.com)



## WELCOME HOME

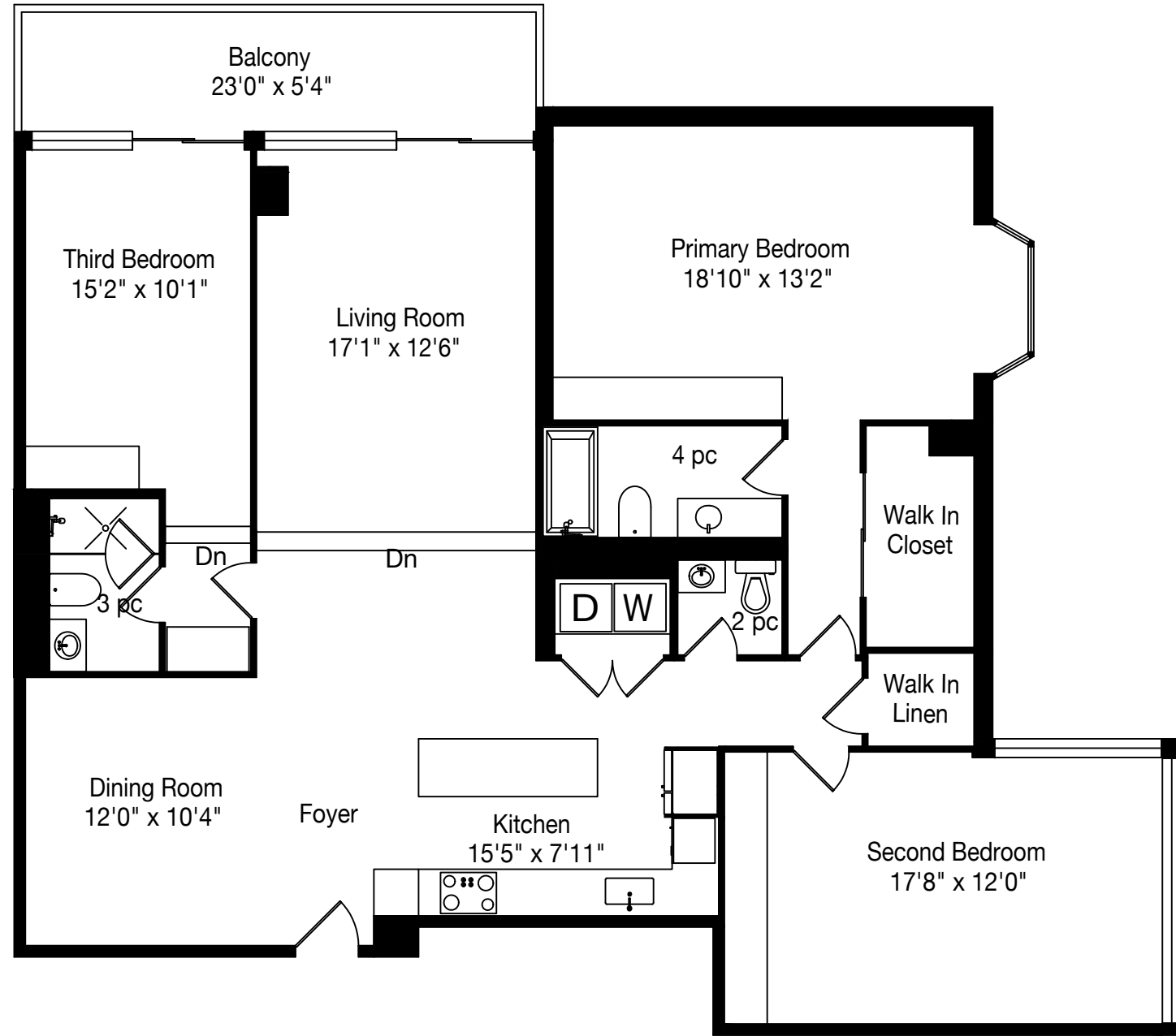
- Fully renovated suite allows you to leave the pace of the city behind and come home to comfort and incredible unobstructed south views
- The private balcony overlooks lush green space and with park and skyline views stretching to the CN Tower on clear days
- The suite offers an impressive 1,765 sq ft filled with natural light, this expansive 3 bedroom, 3 bathroom suite
- An elegant and well-designed space to live, work, entertain, and unwind
- Host friends and family around the generously dining area, large kitchen island, or enjoy flexible living space designed for real life, and appreciate the convenience of two parking spaces
- The suite also features two possible primary bedrooms, each with an ensuite bathroom, and ample closet space, as well as a third spacious bedroom with corner southwest windows for maximum light
- Every inch of this suite integrates well planned storage for everyday living
- Easily access walking trails and beautifully landscaped grounds
- Your new home is perfectly positioned minutes to the 404 and 401 Highways



## ADDITIONAL INFO

- Property Taxes:** \$3,204.87 (Annual in 2026)
- Possession:** 30-60 days or to be arranged
- Maintenance Fee:** \$1,759.36 (monthly 2026)
- Includes:** Heat, hydro, water, CAC, cable, internet, common elements, building insurance, and parking
- Heating:** Gas/Forced Air
- Square Footage:** 1,765 sq ft interior per Floor Plans
- Amenities:** Concierge, gym, indoor pool, hot tub, sauna, tennis court, library, billiards room, party/meeting room, BBQ area, gate house, and visitor parking
- Pet Restrictions:** Dogs and reptiles are not permitted. A maximum of one domesticated animal is allowed, such as one bird under 30 pounds, one cat under 30 pounds, one small caged pet under 30 pounds (e.g., rabbit, guinea pig, or hamster), or fish kept in a single tank not exceeding 40 litres of water capacity.
- Exposure:** South West
- Property Mngmnt:** Dell Property Management  
416-490-8350
- Inclusions:** Refrigerator (Bosch), Oven (LG), Stovetop (Samsung), Dishwasher (Bosch), Built-in Microwave (Whirlpool), Washer and Dryer (Samsung), All Built-in and Attached Shelving, All Existing Window Blinds and Curtains Not Belonging to Stager, and All Electric Light Fixtures
- Exclusions:** All Existing Window Coverings Belonging to Stager
- Rental Items:** None

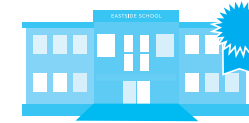






### SCHOOLS

With so many assigned and local public schools very close to this home, your kids can thrive in the neighbourhood.



#### Nearby Schools

**Seneca Hill Public School**  
Designated Catchment School  
Grades PK to 5  
625 Seneca Hill Dr

**Don Valley Middle School**  
Designated Catchment School  
Grades 6 to 8  
3100 Don Mills Rd

**Georges Vanier Secondary School**  
Designated Catchment School  
Grades 9 to 12  
3000 Don Mills Rd

**ÉÉ Paul-Demers**  
Designated Catchment School  
Grades PK to 6  
100 Ravel Rd

**ÉS Étienne-Brûlé**  
Designated Catchment School  
Grades 7 to 12  
300 Banbury Rd

#### Other Local Schools

**Lester B. Pearson Elementary School**  
Grades K to 8  
7 Snowcrest Ave

### PARKS & REC

This home is located in park heaven, with 3 parks and 14 recreation facilities within a 20 minute walk from this address.



**Seneca Hill Park**  
620 Seneca Hill Dr

**Zion Church Cultural Centre**  
1650 Finch Avenue East

1 min

1 min

**Seneca Village Community Centre**  
1700 Finch Ave E

1 min

#### FACILITIES WITHIN A 20 MINUTE WALK

- 3 Playgrounds
- 4 Tennis Courts
- 1 Sports Field
- 2 Community Centres
- 2 Arts/Performance Facilities
- 1 Fitness/Weight Room
- 1 Gym

### TRANSIT

Public transit is at this home's doorstep for easy travel around the city. The nearest rail transit stop is only 1.5 km away, and the nearest street transit stop is a 1 minute walk away.

**Nearest Rail Transit Stop**  
Old Cummer GO

**Nearest Street Level Transit Stop**  
Finch Ave East At Skymark Dr

1 min

### SAFETY

With safety facilities in the area, help is always close by. Facilities near this home include a fire station, a hospital, and a police station within 5km.

**North York General Hospital**  
4001 Leslie St

**Fire Station**  
700 Seneca Hill Dr

**Police Station**  
50 Upjohn Rd



Disclaimer: These materials have been prepared for and are not intended to solicit buyers or sellers currently under contract with a brokerage. By accessing this information you have agreed to our terms of service, which are hereby incorporated by reference. This information may contain errors and omissions. You are not permitted to rely on the contents of this information and must take steps to independently verify its contents with the appropriate authorities (school boards, governments etc.). As a recipient of this information, you agree not to hold us, our licensors or the owners of the information liable for any damages, howsoever caused.

1555 FINCH AVENUE EAST, SUITE 1907



The logo for The Mills Team, featuring a stylized house icon above the text "THE MILLS TEAM".



AN EXCEPTIONAL REAL ESTATE EXPERIENCE

TheMillsTeam.ca

Team@TheMillsTeam.ca

416.443.0300

Lauren Rebecca\*, Laura Lee\*, Tonille Giovis\*, Katie Mills\*, Sue Mills\*, Sarah O'Neill\*, Breanna Rothe, Priyanka Mehta, Christine Sweeny\*, Merida Lake\* | \* SALES REPRESENTATIVE

1555Finch1907.com

The logo for Royal LePage Signature, featuring the text "ROYAL LEPAGE Signature" and "INDEPENDENTLY OWNED & OPERATED REAL ESTATE BROKERAGE" below it.

Prospective purchasers should satisfy themselves as to the accuracy of the information contained in this feature sheet. All measurements are approximate. The statements contained herein are based on sources which we believe are reliable, but for which we assume no responsibility. \* Sales Representative