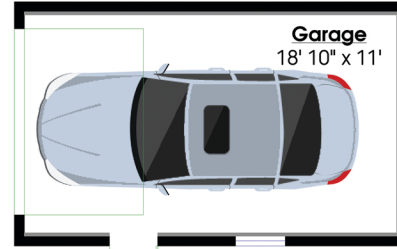


2090 Turner Street, Vancouver, B.C.

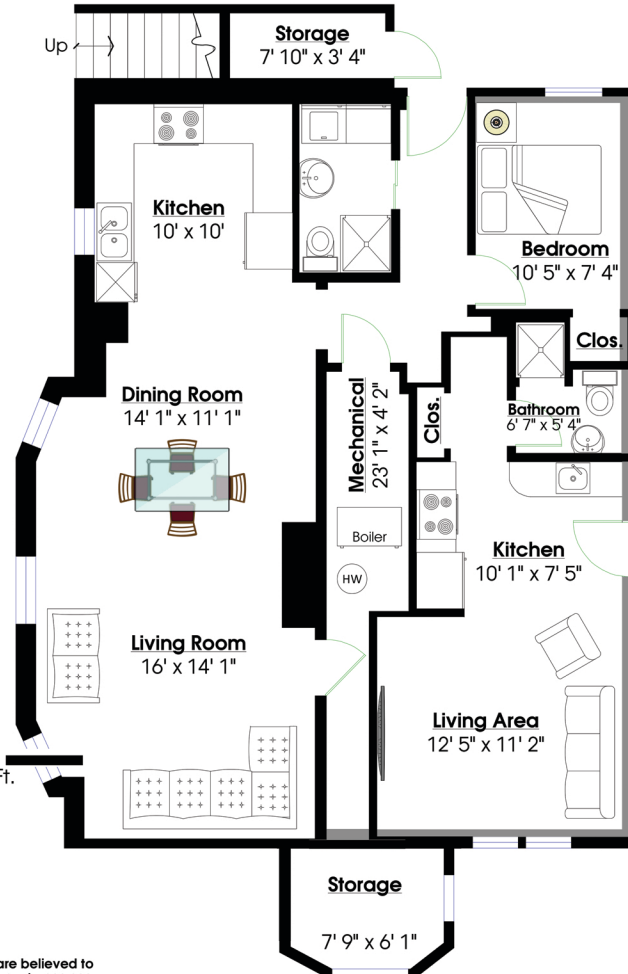
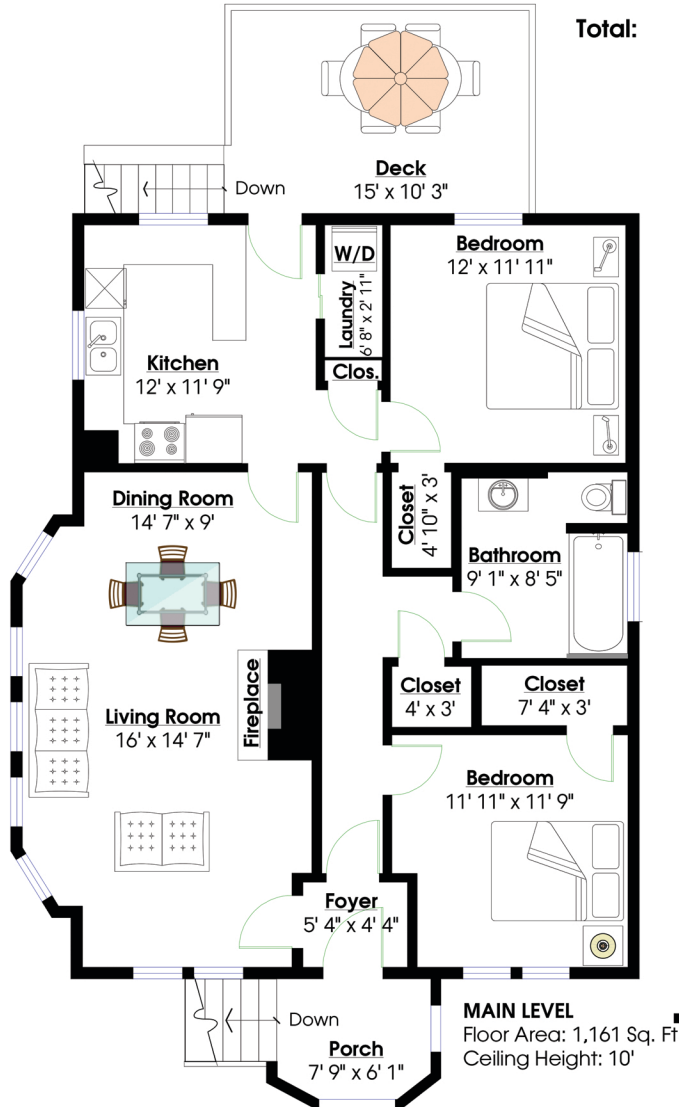
Totals**

Main Level: 1,161 sq. ft. D. Garage: 246 sq. ft.
 Upper Level: 1,161 sq. ft. Deck: 155 sq. ft.
 Porch: 55 sq. ft. Storage: 32 sq. ft.

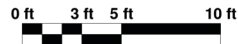
Total: 2,322 sq. ft.
Total: 488 sq. ft.



DETACHED GARAGE
 Floor Area: 246 Sq. Ft.
 Ceiling Height: 6' 6"



LOWER LEVEL
 Floor Area: 1,161 Sq. Ft.
 Ceiling Height: 7' 1"



** While all reasonable attempts have been made to ensure accuracy and the square footage and room dimensions are believed to be correct to ANSI Standards, due to the possibility of human error the information cannot be guaranteed. E&O Insured for \$1,000,000