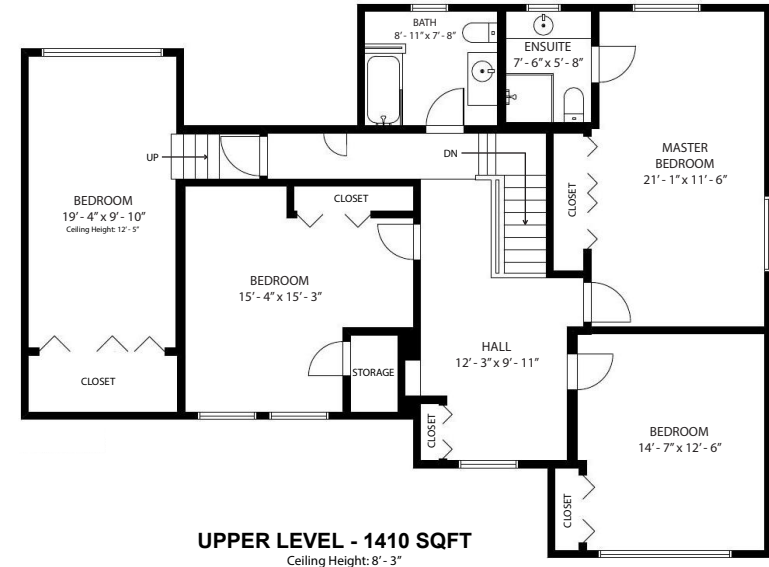
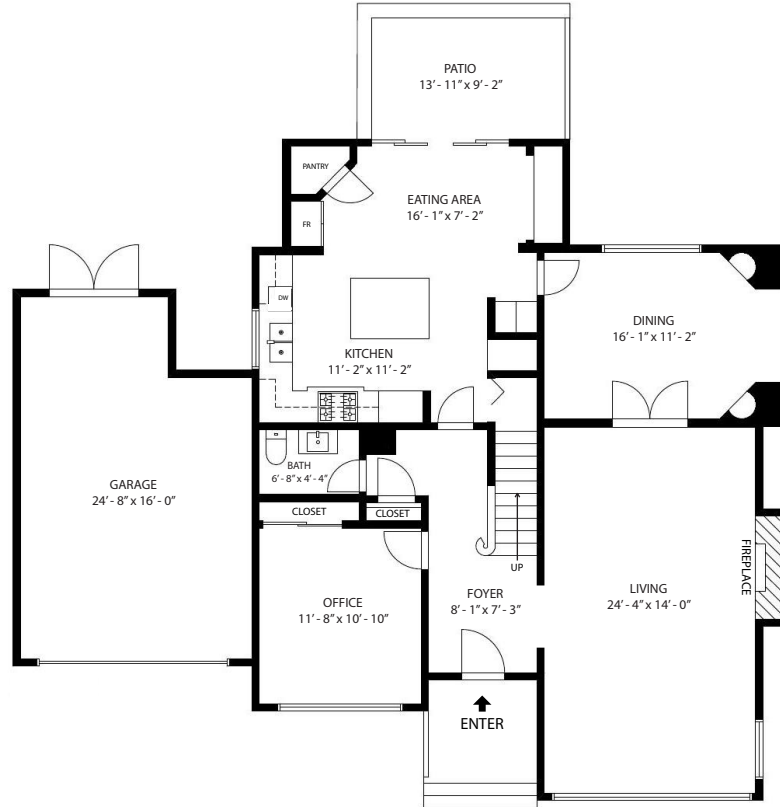
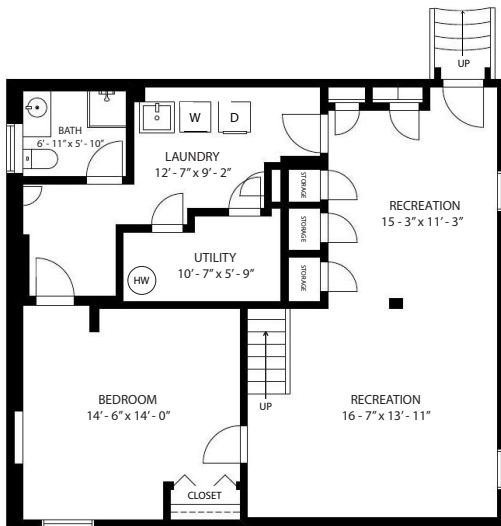


5616 Highbury St.

Vancouver, BC

Total:	3691 SQ.FT.
Main Level:	1283 SQ.FT.
Upper Level:	1410 SQ.FT.
Lower Level:	998 SQ.FT.
<hr/>	
Patio:	128 SQ.FT.
Garage:	381 SQ.FT.
Art Studio:	138 SQ.FT.
Total Extras:	647 SQ.FT.



Measurements are approximate and taken from interior walls. To be used for illustrative purposes only. Floorplan measured by Angus Macgillivray on Sep 11, 2020.