

1065 PHILLIPS AVENUE

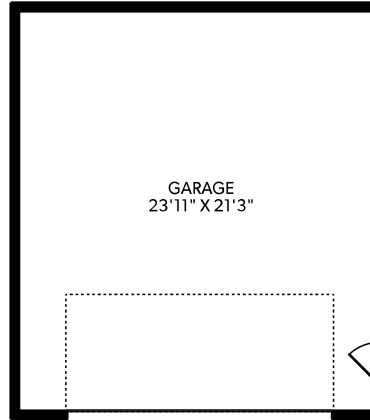
SEADON & ASSOCIATES

REAL ESTATE CONSULTING SERVICES

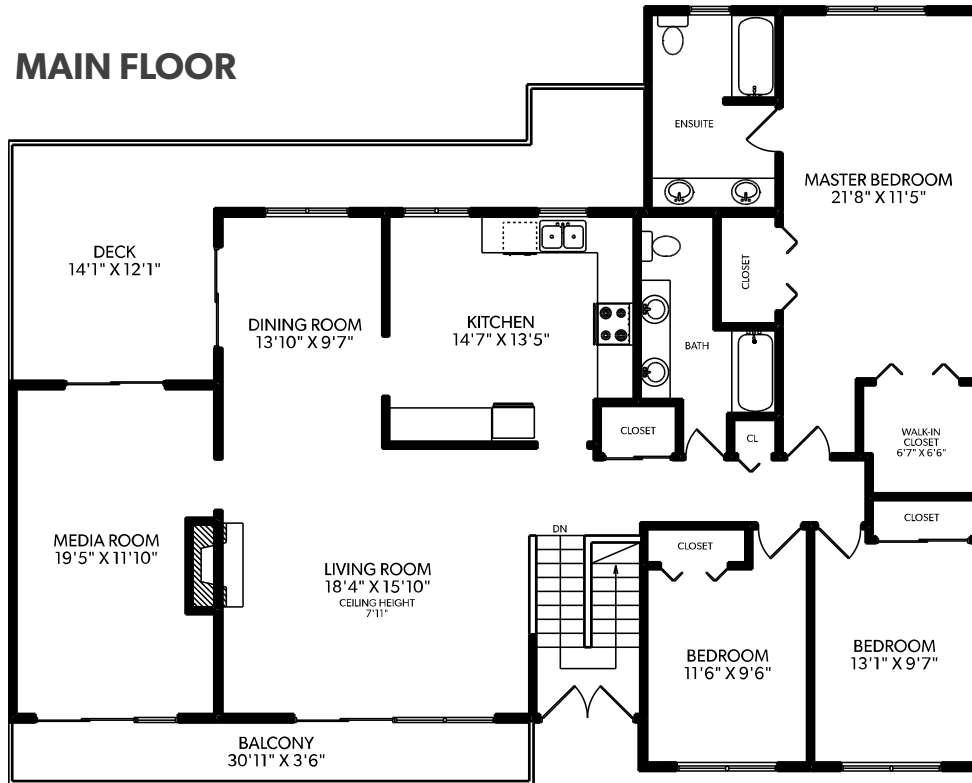
www.thereferraladvantage.com | 604-290-4998

FLOOR	FINISHED	UNFINISHED	TOTAL	OTHER AREAS	
MAIN	1962	0	1962	DECK	304
LOWER	1698	0	1698	BALCONY	118
TOTAL	3660	0	3660	CARPORT	378
				GARAGE	553

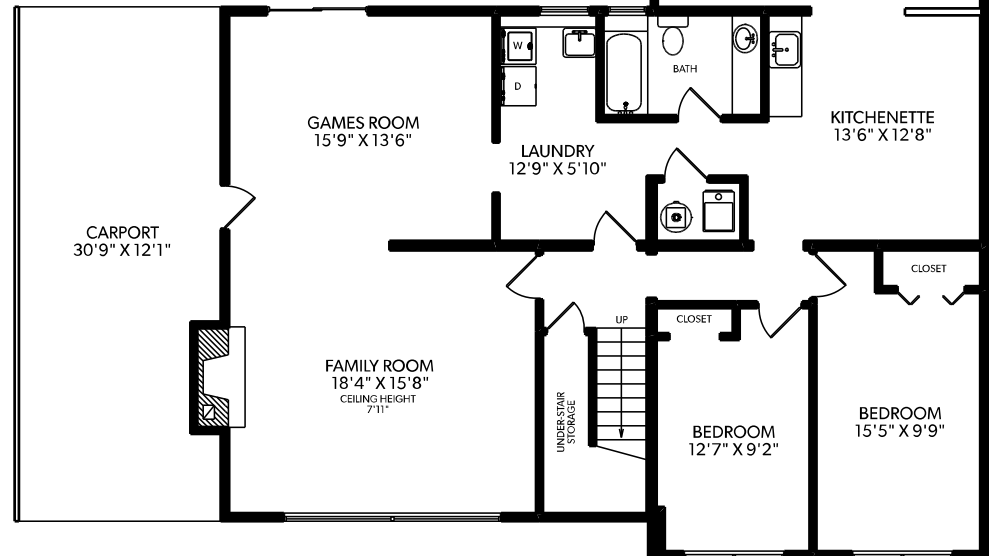
GARAGE



MAIN FLOOR



LOWER FLOOR



stilhavn
REAL ESTATE SERVICES

Document prepared for the exclusive use of David Seadon* & Jason Gach *PERSONAL REAL ESTATE CORPORATION

These floor plans are not suitable for construction purposes. Efforts have been made to represent dimensions accurately. Purchaser of the property to verify measurements if important. E&O Insured.



GMS
FLOOR PLANS .CA

MEASURED 04/ 20 / 2021