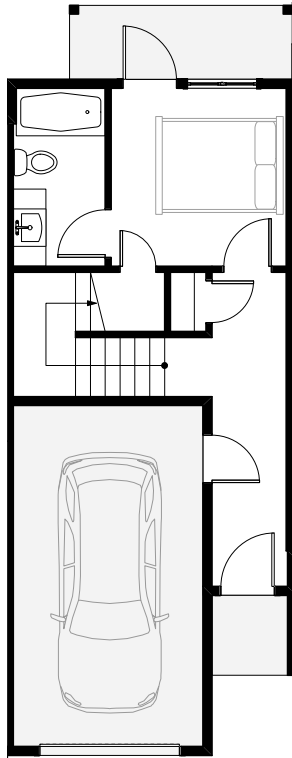
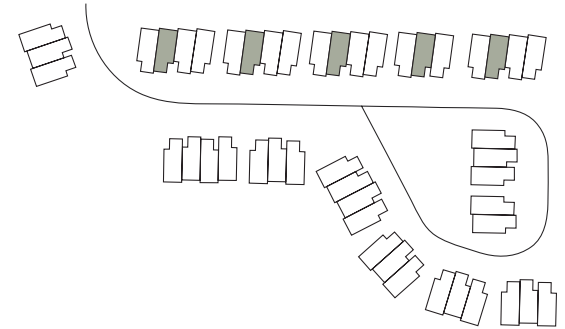
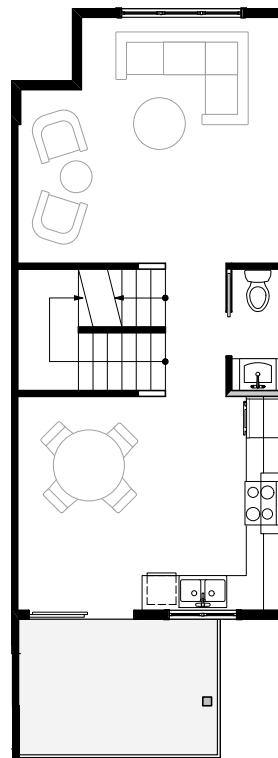


# LAYOUT 02 | ESSENTIALS

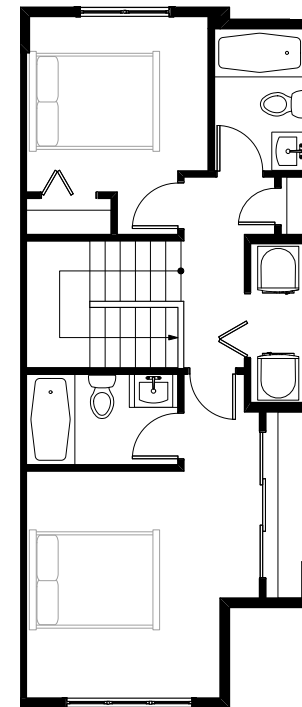
GARDEN ACCESS | +/- 1,452 sqft | 130, 133, 137, 141, 145



LOWER



MAIN



UPPER

"Garden Access" is the name of the floor plan category classification only and does not guarantee the presence or quality of a garden. The Developer reserves the right to make changes to the floor plans, features, materials, fixtures, finishings, specifications, designs, plans, and dimensions. E.& O.E.. Actual townhomes may have minor variations from the plan illustrated above. Floor plans and all dimensions are taken from the architectural drawings and are approximate. Square footage is converted from square meters and taken from the Disclosure Statement in Exhibit 3.1, Form V Schedule of Unit Entitlement - Total Area in m<sup>2</sup>, is approximate, and varies from the total square footage found on the architectural plans. Actual dimensions and square footage may be different in the completed unit. E.& O.E.



[WWW.THESOUTHBEND.CA](http://WWW.THESOUTHBEND.CA)

# ESSENTIALS INTERIOR



1



2



3



4



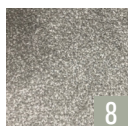
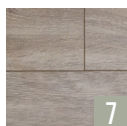
5



6



1. Weiser Lisbon Satin Chrome Round Rose Door Hardware
2. Lexie 20.5" Chrome Wide Cord LED Chandelier
3. Spec 24" Polished Chrome LED Vanity Lighting
4. Moen Genta Chrome One-Handle Tub/Shower Faucet
5. Moen Genta Chrome One-Handle Bathroom Faucet
6. Riobel Pro Chrome Kitchen Faucet with Spray
7. Kahla 7" Wide Plank 12mm AC4 Laminate Flooring
8. Classic Silver Carpet
9. Shnier 12" x 24" Vinyl Tile Bathroom Flooring
10. Matte White Shaker-Style Soft Close Cabinetry
11. Fir Stone C5122 Honed Quartz Kitchen Countertops
12. Inukshuk Grey Laminate Bathroom Countertops
13. Dove's Wing Paint



# APPLIANCES

