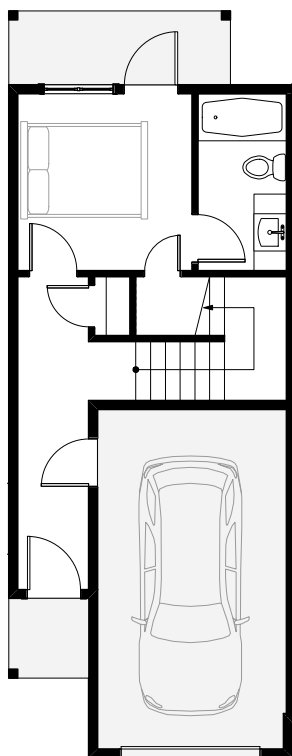
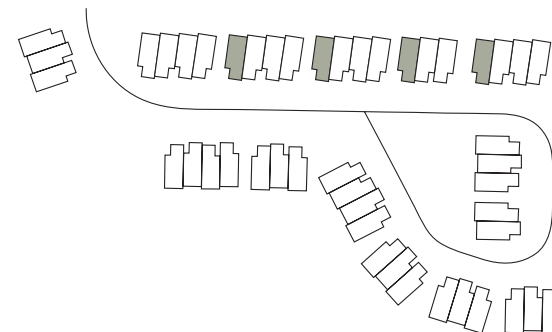
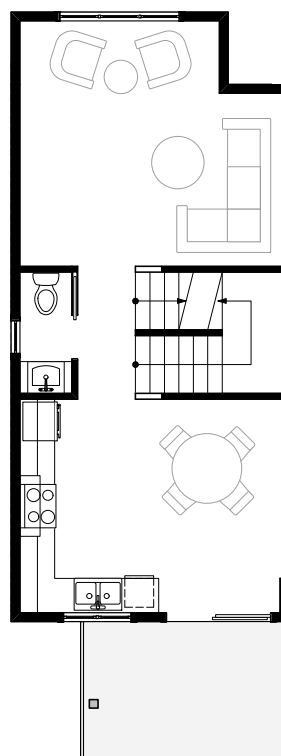


LAYOUT 05 | PREMIUM

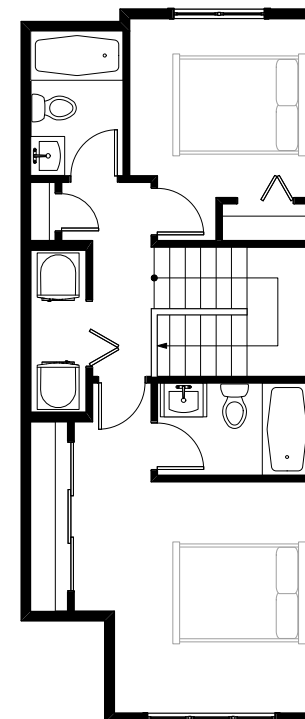
GARDEN ACCESS | +/- 1,427 SQFT | 131, 134, 138, 142



LOWER



MAIN



UPPER

"Garden Access" is the name of the floor plan category classification only and does not guarantee the presence or quality of a garden. The Developer reserves the right to make changes to the floor plans, features, materials, fixtures, finishings, specifications, designs, plans, and dimensions. E.& O.E.. Actual townhomes may have minor variations from the plan illustrated above. Floor plans and all dimensions are taken from the architectural drawings and are approximate. Square footage is converted from square meters and taken from the Disclosure Statement in Exhibit 3.1, Form V Schedule of Unit Entitlement - Total Area in m², is approximate, and varies from the total square footage found on the architectural plans. Actual dimensions and square footage may be different in the completed unit. E.& O.E.



WWW.THESOUTHBEND.CA

PREMIUM CORNER



HEATED PRIMARY ENSUITE FLOORS

UNDER-CABINET LIGHTING

SOFT CLOSE CABINETRY THROUGHOUT

1



2



3



4



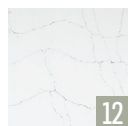
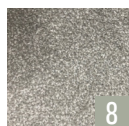
5



6



1. Weiser Lisbon Matte Black Round Rose Door Hardware
2. Lexie 20.5" Matte Black Wide Cord LED Chandelier
3. Spec 24" Matte Black LED Vanity Lighting
4. Moen Genta Matte Black One-Handle Tub/Shower Faucet
5. Moen Genta Matte Black One-Handle Bathroom Faucet
6. Riobel Pro Matte Black Kitchen Faucet with Spray
7. Tokyo 7 5/8" Wide Plank 12mm AC5 Laminate Flooring
8. Classic Silver Carpet
9. 12" x 24" Carrerra Tile Bathroom Flooring
10. Verismo Flat-Panel Lower Kitchen Cabinetry
11. Matte White Shaker-Style Upper Kitchen & Vanity Cabinetry
12. Fir Stone V8011 Polished Quartz Kitchen Countertops
13. Calacatta Marble Laminate Bathroom Countertops
14. Dove's Wing Paint



APPLIANCES

