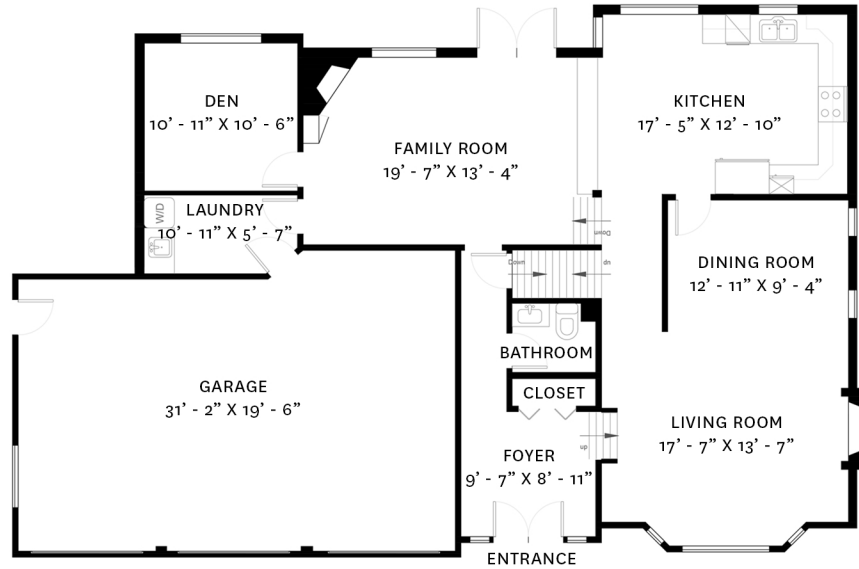


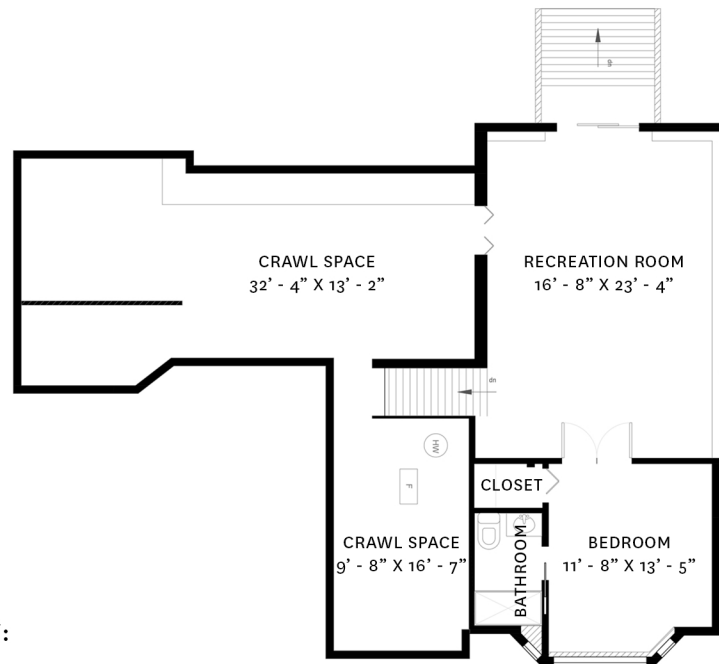
3980 LEWISTER ROAD, NORTH VANCOUVER, BC



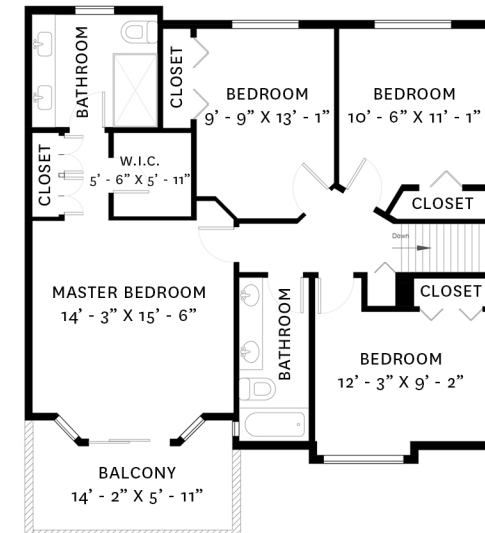
MAIN FLOOR PLAN:
Ceiling Height: 8' - 0"

LOWER FLOOR: 681 SF
MAIN FLOOR: 1421 SF
UPPER FLOOR: 958 SF
TOTAL: 3060 SF

CRAWL SPACE: 720 SF
GARAGE: 673 SF
BALCONY: 105 SF



LOWER FLOOR PLAN:
Ceiling Height: 7' - 7"



UPPER FLOOR PLAN:
Ceiling Height: 7' - 11"



Jesse Williamson
604-984-9711
jesse@thewilliamsons.ca
www.thewilliamsons.ca

floor plan designed by
ishot.ca Enterprises Inc.
604-368-7979
http://ishot.ca