



SUSSEX REALTY

JESSE WILLIAMSON

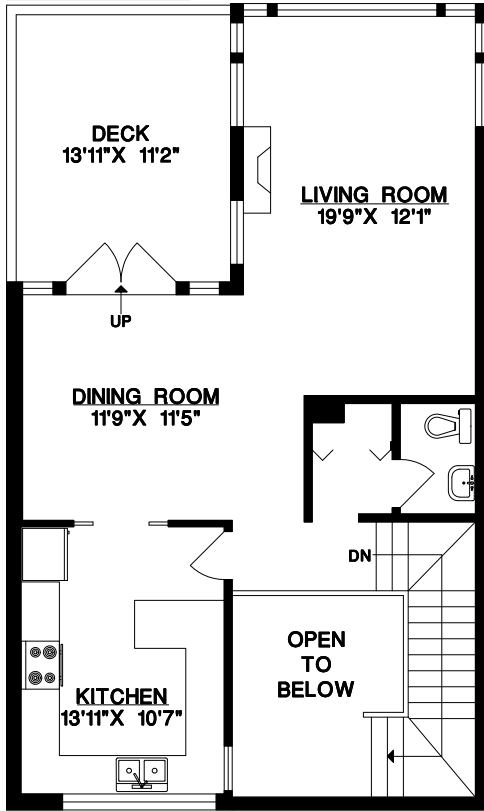
BUS: 604-754-0678

4139 YALE STREET,
BURNABY, B.C.

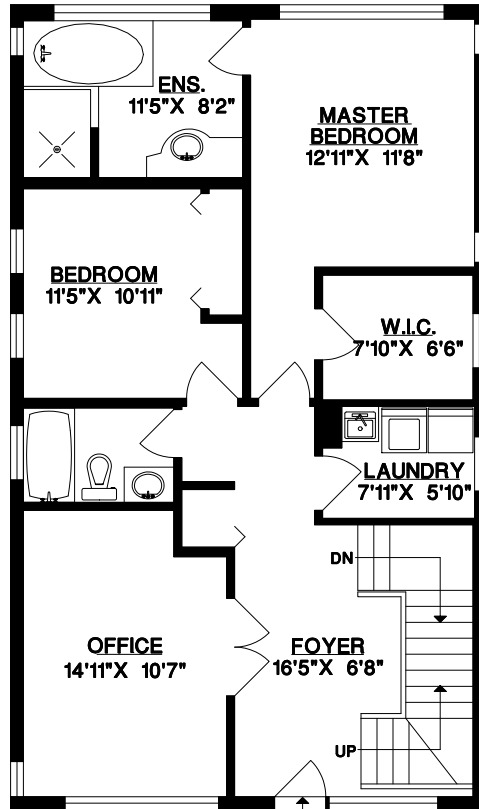
UPPER FLOOR	795	SQ. FT.
MAIN FLOOR	1037	SQ. FT.
BASEMENT	657	SQ. FT.
TOTAL	2489	SQ. FT.

GARAGE	327	SQ. FT.
BALCONY	155	SQ. FT.
PATIO	281	SQ. FT.

UPPER FLOOR



MAIN FLOOR



BASEMENT

