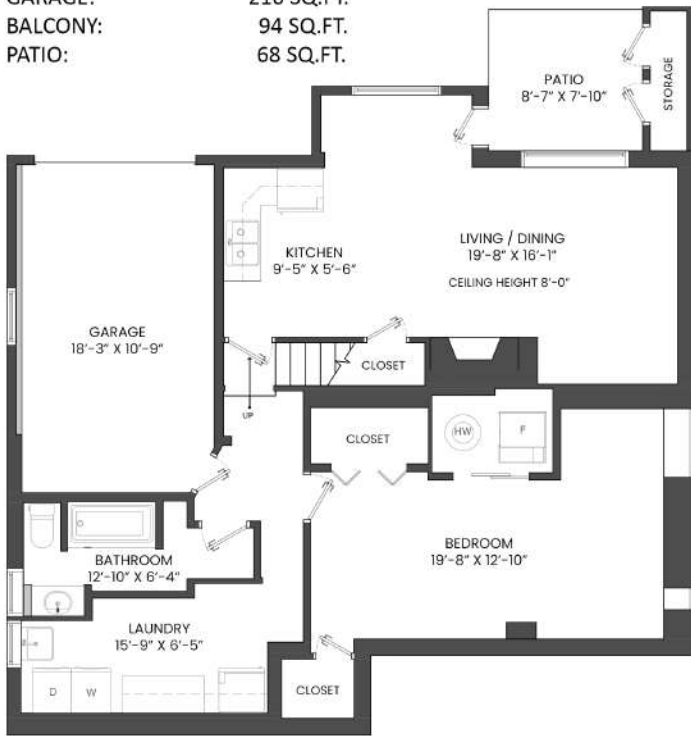


657 KEITH ROAD EAST, NORTH VANCOUVER, BC

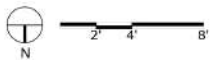
LOWER FLOOR TOTAL: 985 SQ.FT.
 MAIN FLOOR TOTAL: 1,191 SQ.FT.
TOTAL: 2,176 SQ.FT.
 GARAGE: 216 SQ.FT.
 BALCONY: 94 SQ.FT.
 PATIO: 68 SQ.FT.



LOWER FLOOR PLAN
 Ceiling Height: 7'-1"



MAIN FLOOR PLAN
 Ceiling Height: 8'-0"



THE WILLIAMSONS
 REAL ESTATE TEAM

Jesse Williamson

604-984-9711

jesse@thewilliamsons.ca

www.thewilliamsons.ca

THE FLOOR PLAN ILLUSTRATION IS NOT SUITABLE FOR CONSTRUCTION/ ARCHITECTURAL PURPOSES.
 MEASUREMENTS ARE APPROXIMATE AND MAY NOT BE TO SCALE. E&O INSURED. FLOOR PLAN DESIGNED BY ISHOT.CA ENTERPRISES INC. 604-368-7979 ISHOT.CA

