

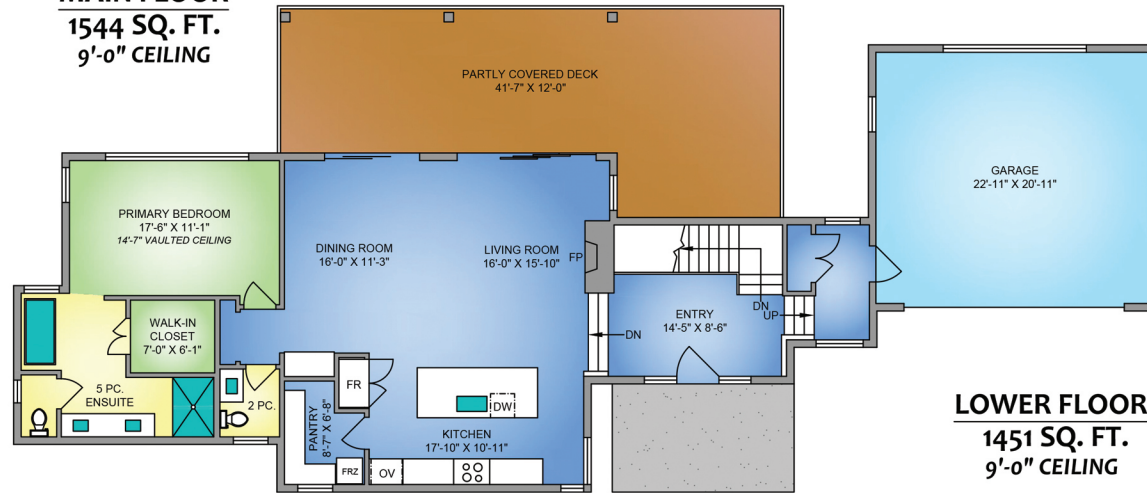
Architectural Masterpiece on Fairwinds Golf Course

Crafted by Sartori Custom Homes in a warm contemporary style with high ceilings and a generous covered deck and huge windows to maximize light.

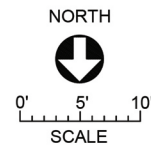
3576 Sheffield Place, Fairwinds



MAIN FLOOR 1544 SQ. FT. 9'-0" CEILING



LOWER FLOOR 1451 SQ. FT. 9'-0" CEILING



3576 SHEFFIELD PLACE

JUNE 13, 2026

This floor plan has been laser measured and drafted by a professional Drafting Technician using AutoCAD software. ANSI Z765-2021 Method for Single-Family Residential Buildings used in calculating Area. Private resale or modification of this copyrighted document to a third party by any individual or entity, other than the original creator is strictly prohibited. Plans may not be 100% accurate. Buyer must verify any critical measurement.

FLOOR	AREA (SQ. FT.)		
	FINISHED	GARAGE	DECK / PATIO
MAIN	1544	531	572
LOWER	1451	-	190
TOTAL	2995	531	762



Karen Kenyon
Personal Real Estate Corporation
C: 250.741.7517
karen@vidreamhomes.ca



Simon Phillips
Personal Real Estate Corporation
C: 250.607.1757
simon@vidreamhomes.ca



Connie Hentschel
Personal Real Estate Corporation
C: 250.734.2583
connie@vidreamhomes.ca

www.vancouverislanddreamhomes.ca



173 Island Hwy W., Parksville, BC V9P 2H1



Find out more about this listing!

Come for a visit,
Stay for a lifetime

Discover your Dream Home on Vancouver Island

dreamhomes
VANCOUVER ISLAND

Come for a visit, stay for a lifetime

Extremely private with sweeping golf course views



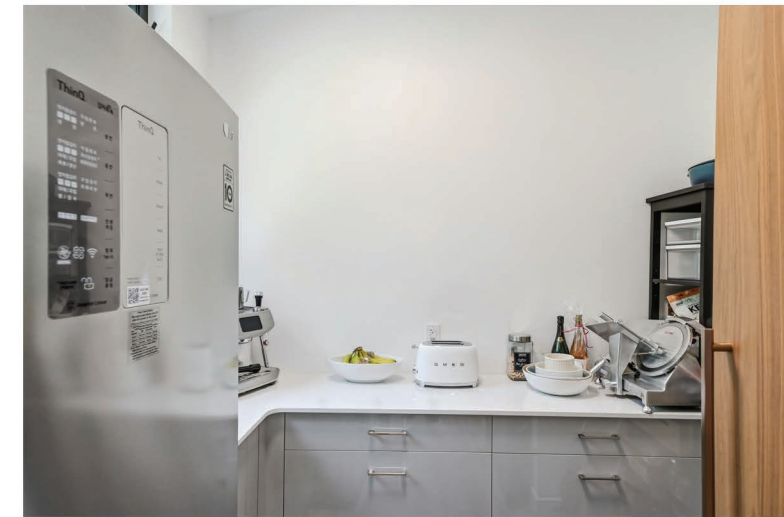
The airy great room with vaulted ceilings and natural gas fireplace flows onto a generous and serene south facing deck.



Generous guest/family accommodations
and Rec room are on the walkout lower level.



This tranquil retreat has a glorious Kitchen



With integrated Fridge/freezer, quality gas cooktop and a hidden Butler's pantry with second fridge and prep area.



Sweet Dreams



A main floor primary with luxurious ensuite provides a quiet haven to relax in

Located in the prestigious Fairwinds Marina and Golf Community on Vancouver Island with easy access to oceanside beaches, pristine walking trails and restaurants highlighting local produce, while only 15 minutes to Nanaimo or Parksville. Fairwinds, it's where you belong.



Nanoose Bay

Experience the small town feel

There is a place... a place where you can breathe... a place where you can dream... a place where you can build for the future... a place where you can grow!

Central Vancouver Island, British Columbia's Pacific Pearl.

It isn't just the scenery that's world class, the moderate pacific weather makes this a hot spot for golfers, clam diggers and water sports enthusiasts. This paradise is filled with exceptional homes, you will be sure to find whatever you are looking for, no matter how big your dreams are.

Because Life's a voyage that's homeward bound... come for a visit and stay for a lifetime in Your Dream Home

