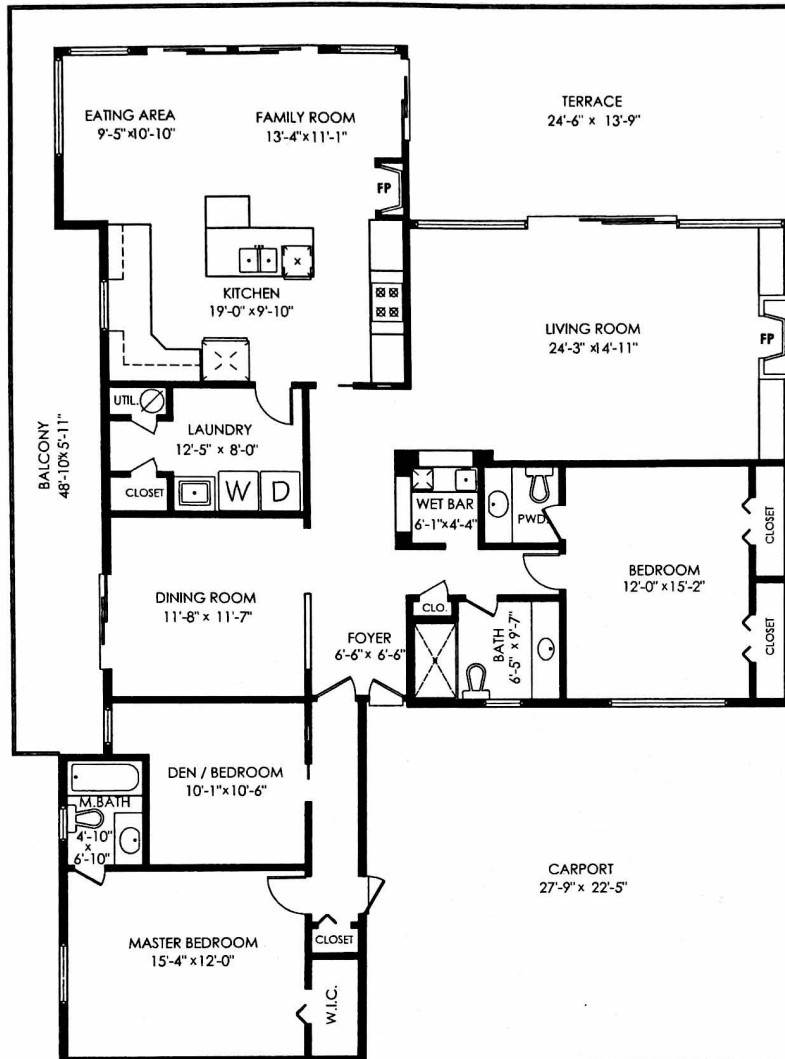


4995 Robson Rd, Belcarra



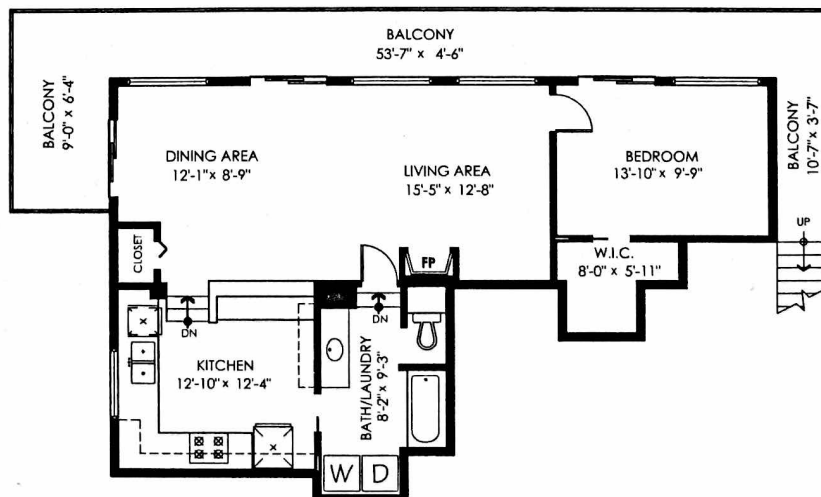
Main Floor: 2,101 sq.ft.
 Suite Floor: 860 sq.ft.
Total: 2,961 sq.ft.

Carport: 667 sq.ft.
 Terrace: 448 sq.ft.
 Balconies: 591 sq.ft.
Total Extras: 1,706 sq.ft.

Main Floor Plan
 Floor Area: 2101 sq.ft.
 Ceiling Height: 8'



SCALE
 0' 5'



Suite Floor Plan
 Floor Area: 860 sq.ft.
 Ceiling Height: 8'-3"