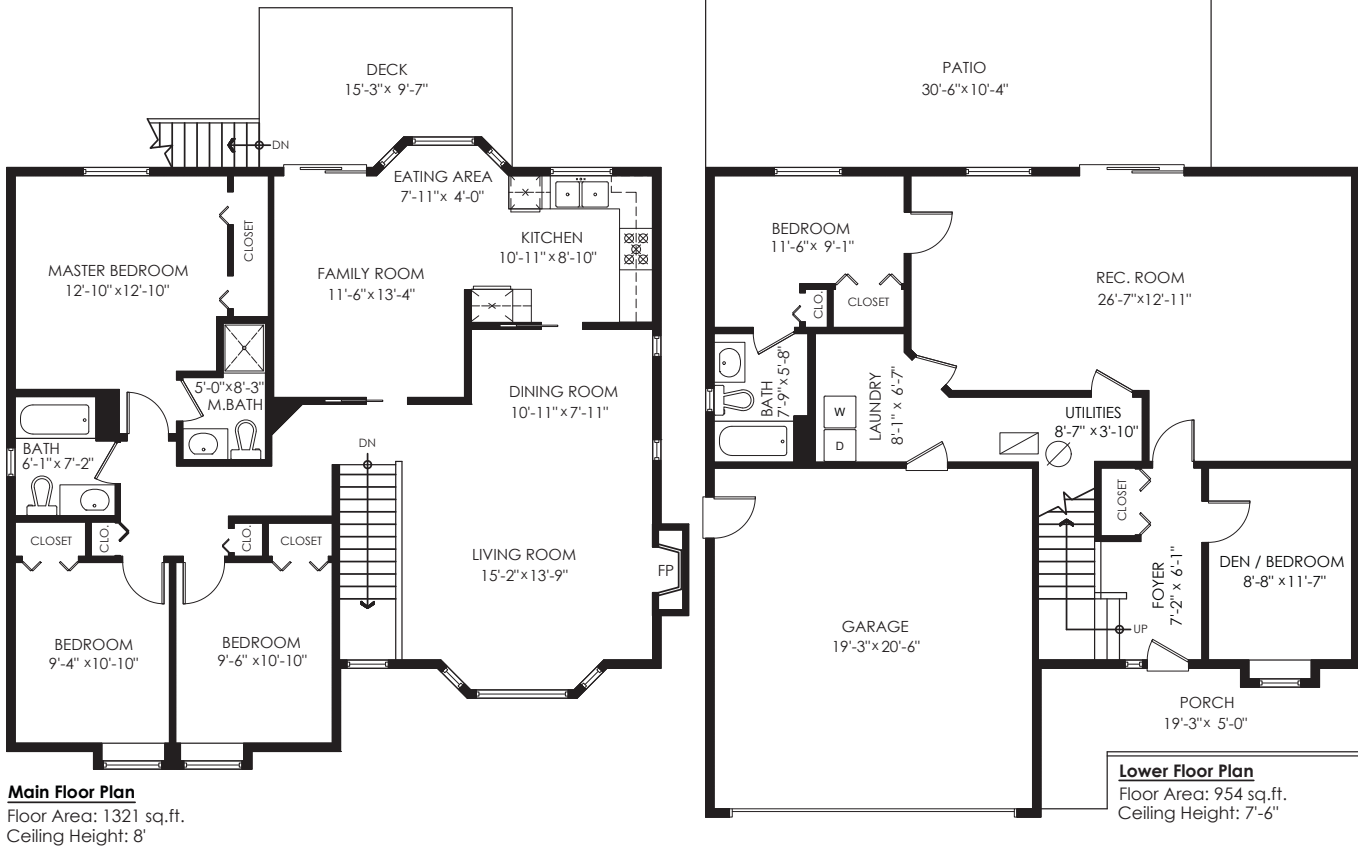


Taryn McKay &
Brian Fedyshen

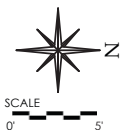
604.970.3536
taryn@veryrealestateagents.com
778.233.5695
brian@veryrealestateagents.com
veryrealestateagents.com

11697 231B St, Maple Ridge

Main Floor:	1,321 sq.ft.
Lower Floor:	954 sq.ft.
Total:	2,275 sq.ft.
Garage:	420 sq.ft.
Patio:	317 sq.ft.
Deck:	135 sq.ft.
Porch:	111 sq.ft.
Total Extras:	983 sq.ft.



Measuring, Scanning, Design & Permits | 604-876-3738
www.DraftOnSite.com



The enclosed information while deemed to be correct, is not guaranteed.
This communication is not intended to solicit properties already listed for sale.

Produced and printed by www.cotala.com

LISTING features

11697 231B Street, Maple Ridge



**VERY REAL
ESTATE AGENTS**.com

Taryn McKay & Brian Fedyshen
(604) 467-0904

brian@veryrealestateagents.com
taryn@veryrealestateagents.com



Brookside Realty
11933 224th Street, Maple Ridge, BC V2X 6B2



This is the one for you! This solid 4 bedroom basement entry home is located on a great street with convenient and easy access to shopping, schools, transit, and more. The beautifully renovated kitchen features stainless steel appliances and a great view of your private backyard. BBQ year round on the west facing rear balcony. Take in the morning sun from the lovely living room which has a stylish gas fireplace and is drenched with natural light. Room for the whole family (and possibly the in-laws) in the 2,275 square feet. Many large cost renovations have been done; kitchen, upstairs windows and roof. This is a must see! Call today for your personal tour, this one will not last long, so don't delay!

Style	Basement Entry
Size	2,275 sf
Bedrooms	4
Bathrooms	3
Parking	4+