

Taryn McKay & Brian Fedyshen

604.970.3536

778.233.5695

taryn@veryrealestateagents.com

brian@veryrealestateagents.com

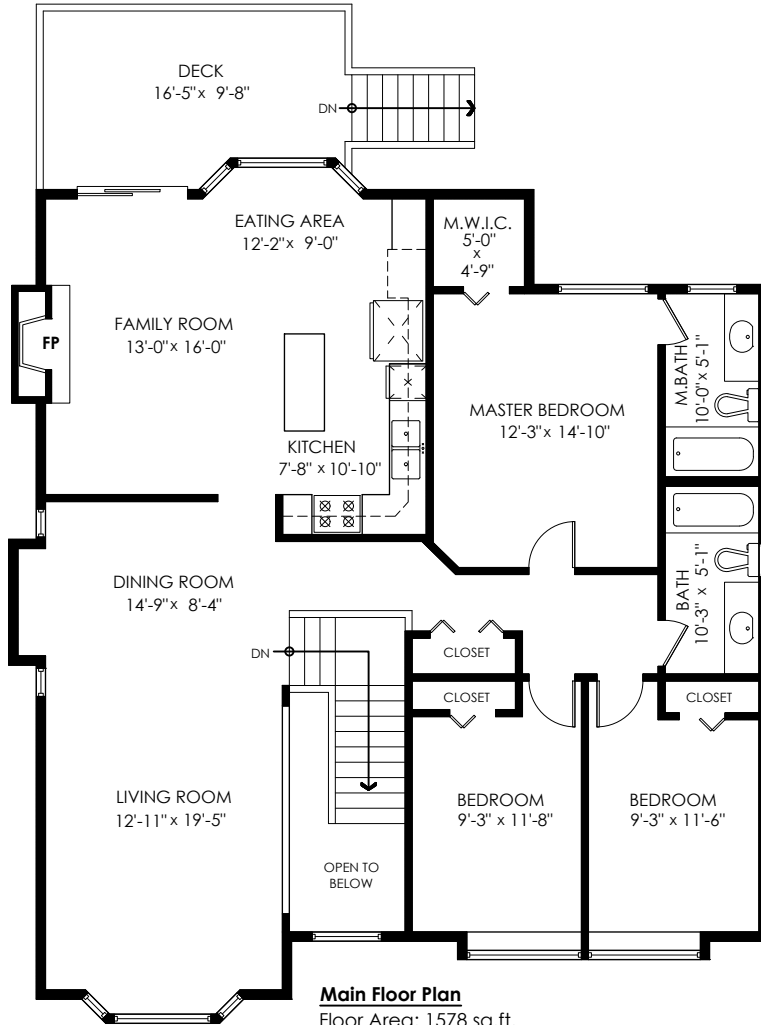
veryrealestateagents.com

11714 Glenhurst St, Maple Ridge

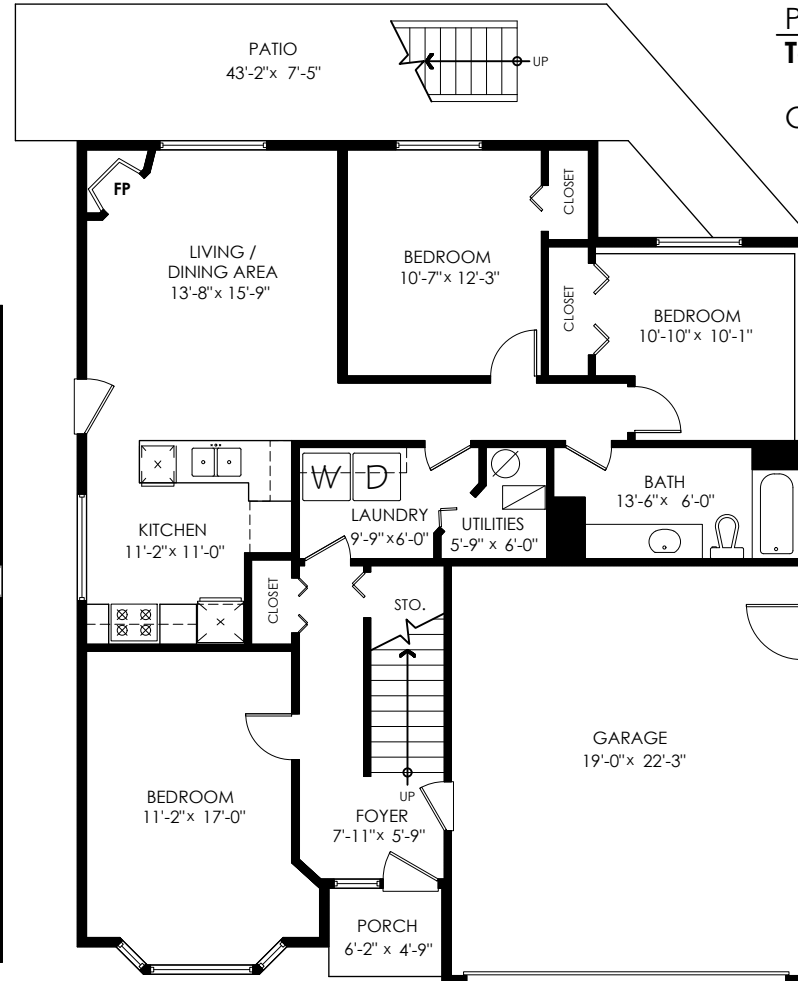
Main Floor: 1,578 sq.ft.
Lower Floor: 1,269 sq.ft.
Total: 2,847 sq.ft.

Garage: 447 sq.ft.
Patio: 290 sq.ft.
Deck: 147 sq.ft.
Porch: 29 sq.ft.
Total Extras: 913 sq.ft.

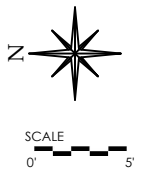
Open To Below: 55 sq.ft.



Main Floor Plan
Floor Area: 1578 sq.ft.
Ceiling Height: 8'



Lower Floor Plan
Floor Area: 1269 sq.ft.
Ceiling Height: 7'-10"



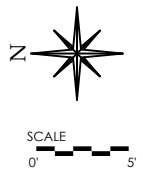
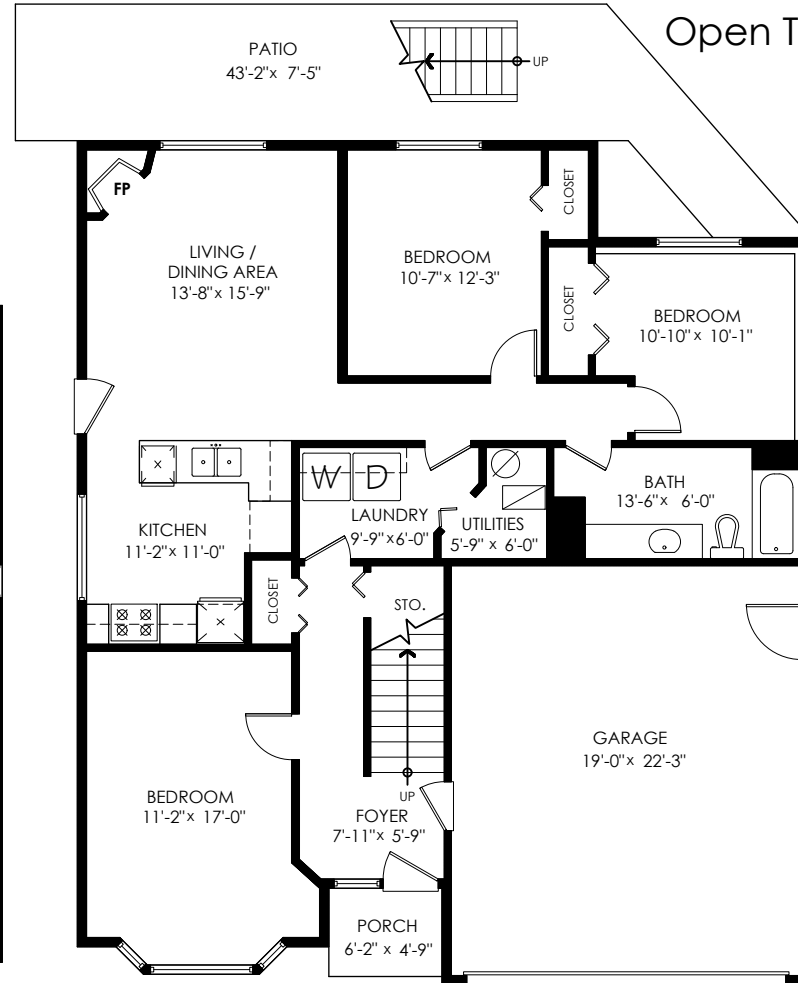
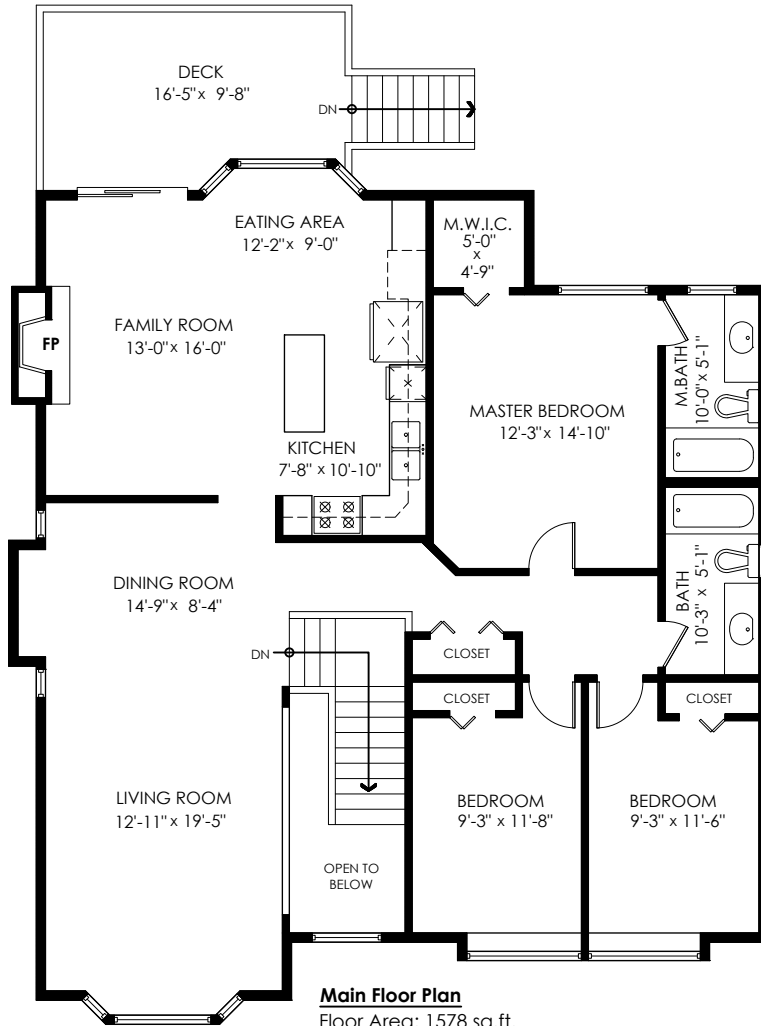
Measuring, Scanning, Design & Permits | 604-876-3738

11714 Glenhurst St, Maple Ridge

Main Floor: 1,578 sq.ft.
 Lower Floor: 1,269 sq.ft.
Total: 2,847 sq.ft.

Garage: 447 sq.ft.
 Patio: 290 sq.ft.
 Deck: 147 sq.ft.
 Porch: 29 sq.ft.
Total Extras: 913 sq.ft.

Open To Below: 55 sq.ft.



Measuring, Scanning, Design & Permits | 604-876-3738



INFO@COTALA.COM
 (604) 514-9589
 WWW.COTALA.COM

Main Floor: 1,578 sq.ft.
 Lower Floor: 1,269 sq.ft.
Total: 2,847 sq.ft.

Garage: 447 sq.ft.
 Patio: 290 sq.ft.
 Deck: 147 sq.ft.
 Porch: 29 sq.ft.
Total Extras: 913 sq.ft.

Houses:

Open To Below: 55 sq.ft.

Total square footage is calculated to the outside of exterior walls.

Room sizes are dimensioned to the inside of the walls. This is because you need to know what you can fit in that room. When you add up the total of the room sizes it will not equal the total square footage of the property. This method of adding up room sizes will not account for wall thickness, interior hallways, exterior wall thickness, closets and many other areas that are included is total sqft.

Any space that is not suitable for year-round use or has a ceiling height of less than 4 feet will not be considered living space. An example of this includes a deck, garage or attic. If there isn't heat, insulation or room for an adult to stand, then it will not be included in the living space.

Cantilevered fireplaces, chimneys and plant windows are also not considered living space.

Included in the living space will be the measurements for stair treads for the floor they service as well as the space under the lowest floor's stairs.

Areas open to the floor below (also known as double height ceilings) are not considered living space because there is no floor.

11714 Glenhurst St, Maple Ridge

