

18 - 20554 118 Avenue, Maple Ridge

LISTING
features



VERY REAL ESTATE AGENTS.COM
 Taryn McKay & Brian Fedyshen
 (604) 467-0904
 brian@veryrealestateagents.com
 taryn@veryrealestateagents.com

T&B

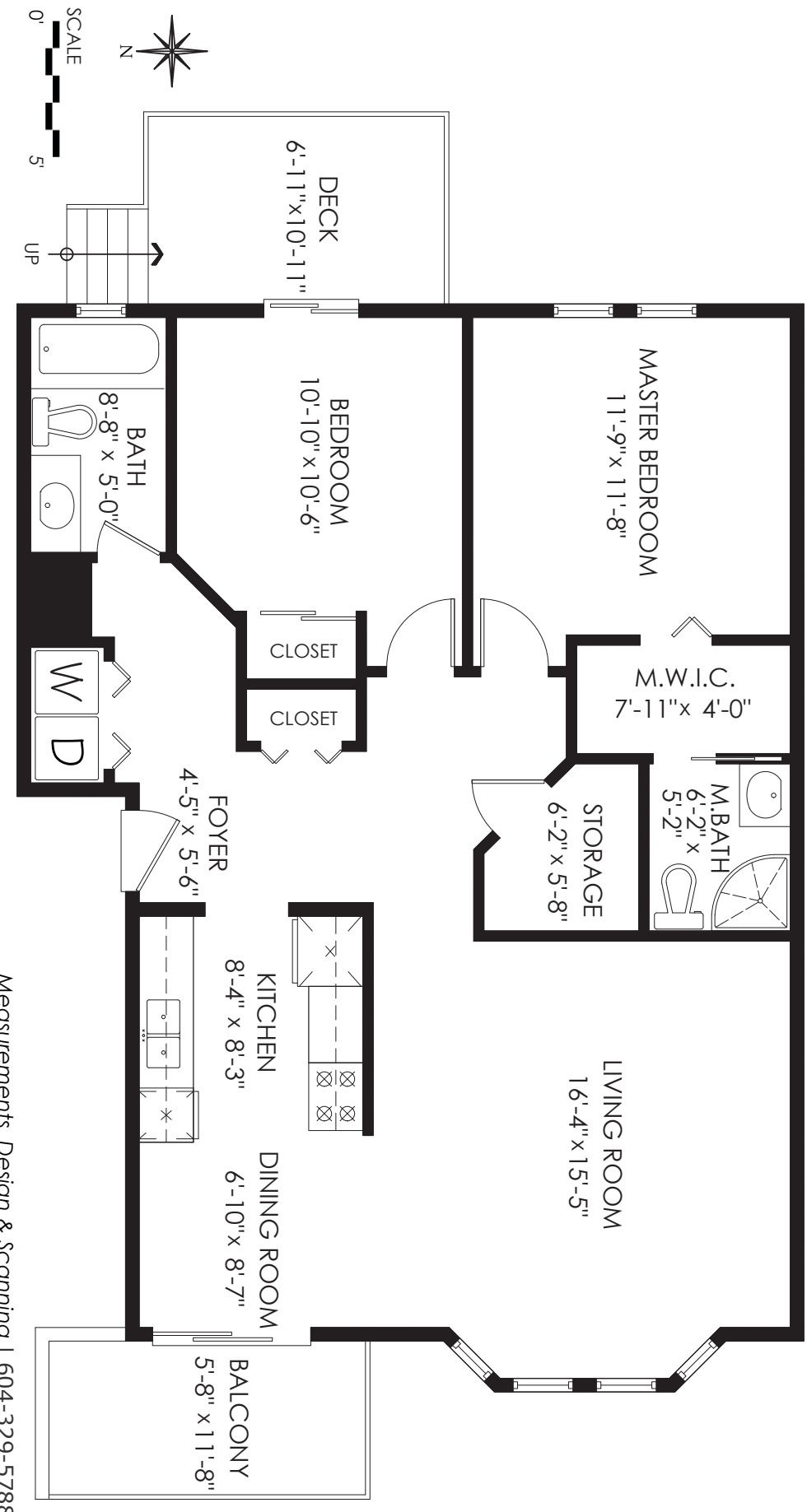
ROYAL LEPAGE Brookside Realty
 11933 224th Street, Maple Ridge, BC V2X 6B2

TARYN MCKAY & BRIAN FEDYSHEN

604.970.3536 taryn@veryrealestateagents.com
 604.233.5695 brian@veryrealestateagents.com
 veryrealestateagents.com

**18-20554 118 Ave,
Maple Ridge**

Floor Area: 1,045 sq.ft.
Deck: 80 sq.ft.
Balcony: 69 sq.ft.
Total Extras: 149 sq.ft.
Ceiling Height: 8-1"



Measurements, Design & Scanning | 604-329-5788
 E&O Insured for \$3,000,000. Total square foot calculated to gross unit area. SQFT based on interior measurements to exterior walls, not taken from original blueprints, may include unfinished area.
 This is for marketing purposes only and is not intended for architectural/construction use. All details, sizes & placements should be considered approximate within +/- 2% tolerance. www.PixiWorks.com



West Side Maple Ridge's Colonial West. This upper unit offers a few delightful surprises. The remodeled kitchen has updated cabinets, countertop & appliances including a double oven for those who love to bake. Laminate flooring throughout, with 2 bedrooms, a storage room & laundry in your suite and 2 decks (north & south exposure) to enjoy. Master ensuite has been renovated to include a shower. There is a covered parking stall & additional spaces available for rent if needed. The clubhouse is the place to meet for dinners or a game of pool with friends as well as a workshop on the lower level for those who enjoy honing their carpentry skills. There is RV parking on site and you are walking distance to shopping, transit & the West Coast Express!

Size	1,045 sf
Bedrooms	2
Bathrooms	2