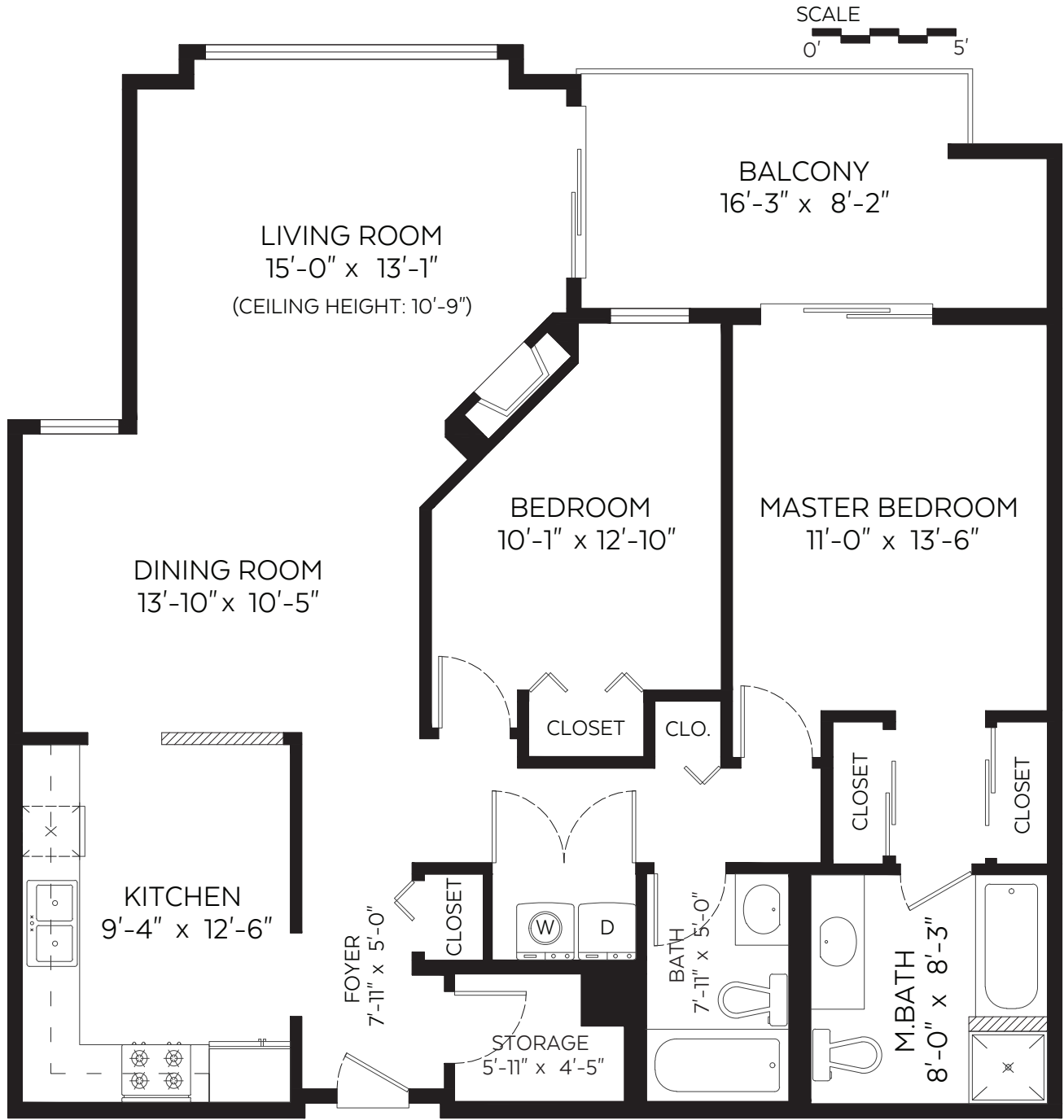


TARYN MCKAY &
BRIAN FEDYSHEN

604.970.3536 778.233.5695
taryn@veryrealestateagents.com brian@veryrealestateagents.com
veryrealestateagents.com

#314-19142 122 Avenue,
Pitt Meadows, B.C.
Main Floor: 1,161 sq.ft.
Ceiling Height: 8 ft. unless noted
Auxiliary Area
Balcony: 124 sq.ft.



Measured on: March 16, 2020

The floor plan is not suitable for architectural/construction and is covered under E&O. © Excelsior
Measuring Inc. 2020. All rights reserved for Excelsior Measuring Inc. Users shall not publish and
distribute such material (in whole or in part) and/or incorporate it in other works in any form.



Produced and printed by  www.cotala.com

The enclosed information while deemed to be correct, is not guaranteed.
This communication is not intended to solicit properties already listed for sale.

LISTING
features

314 - 19142 122 Avenue, Pitt Meadows



T&B

VERY REAL
ESTATE AGENTS.COM

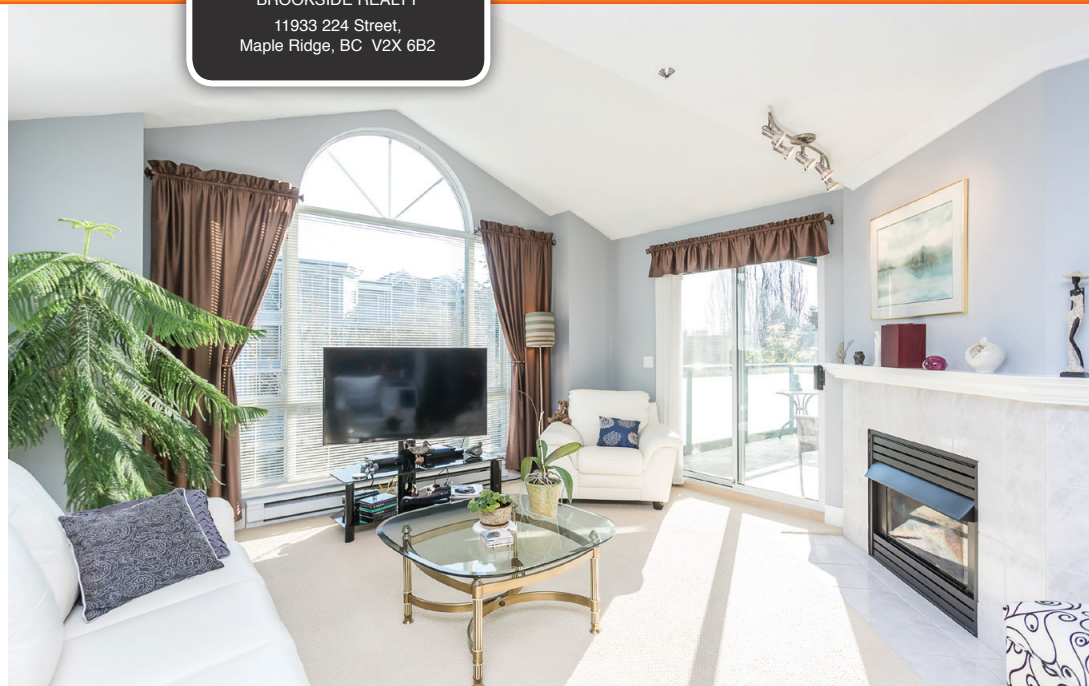
Taryn McKay & Brian Fedyshen

(604) 467-0904

brian@veryrealestateagents.com
taryn@veryrealestateagents.com



Brookside Realty
11933 224th Street, Maple Ridge, BC V2X 6B2



Parkwood Manor! Check off your wish list with this delightful 2 bedroom 2 bath top floor home with towering windows & vaulted ceiling overlooking a park like courtyard. Nothing needs to be done here except move in. This home has been meticulously maintained and it shows. The spacious living/dining area is great for entertaining and the master bedroom is generously sized with a full ensuite and walk thru closet. It is tough to find 2 parking stalls these days and if commuting is on the list, you have 2 easy blocks to get to the West Coast Express. Hoffman Park is right outside your front door and shopping, golf, dykes & Golden Ears Bridge are all within minutes of this prime location. This home will not disappoint!

Style	Upper Unit
Size	1,161 sf
Bedrooms	2
Bathrooms	2