

TARYN MCKAY & BRIAN FEDYSHEN

604.970.3536

taryn@veryrealestateagents.com

veryrealestateagents.com

778.233.5695

brian@veryrealestateagents.com

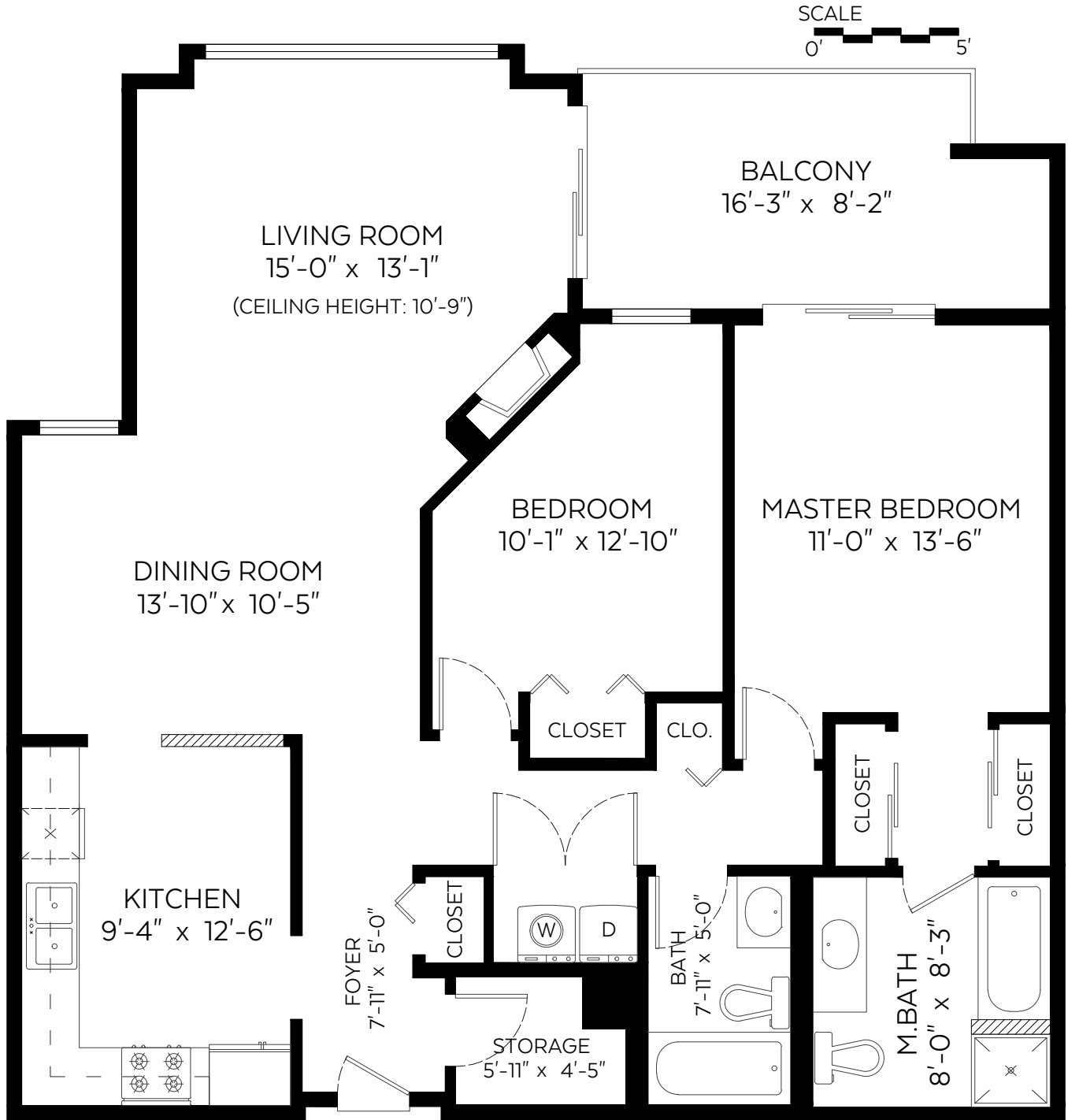
#314-19142 122 Avenue,
Pitt Meadows, B.C.

Main Floor: 1,161 sq.ft.

Ceiling Height: 8 ft. unless noted

Auxiliary Area

Balcony: 124 sq.ft.



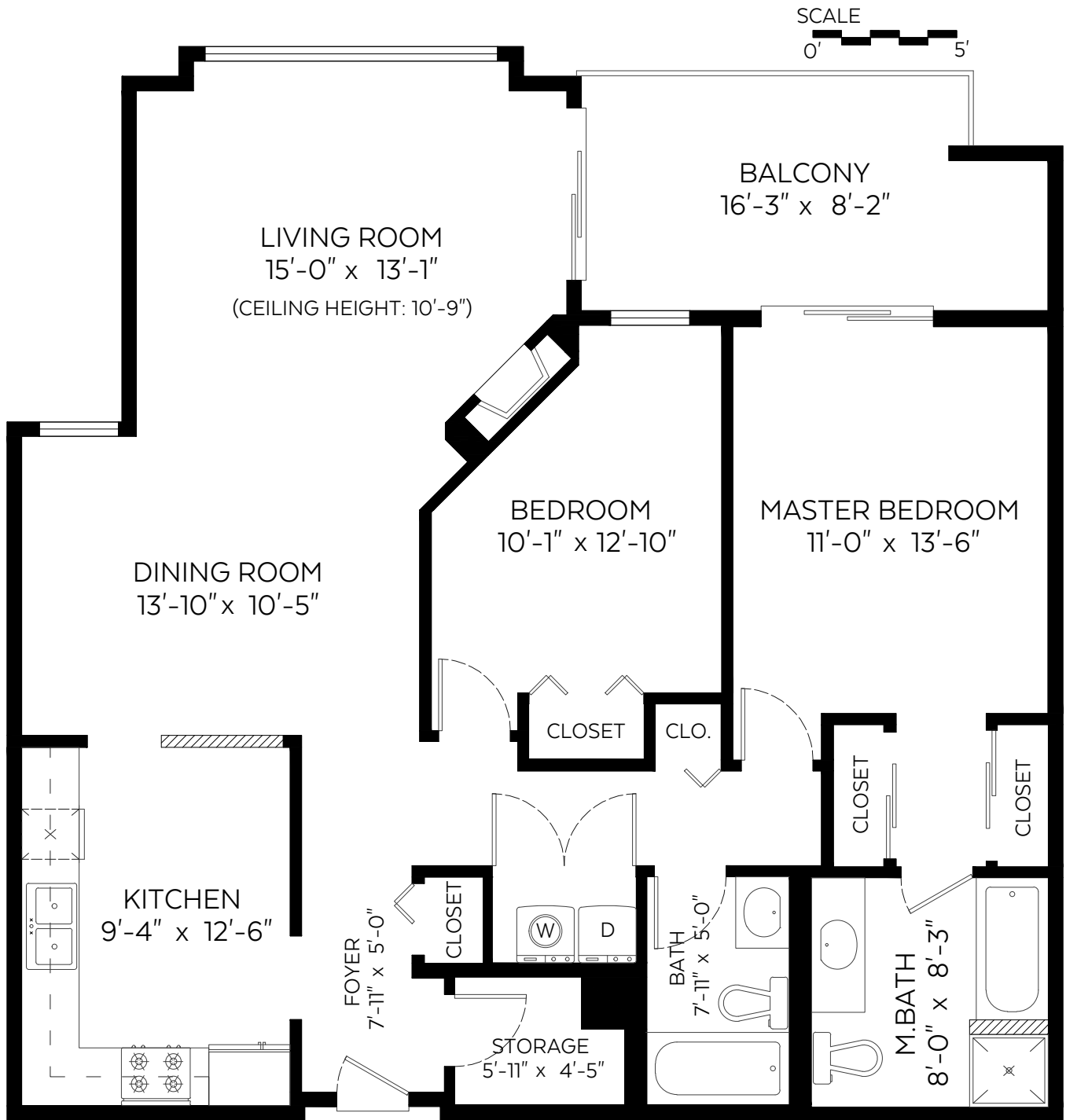
#314-19142 122 Avenue,
Pitt Meadows, B.C.

Main Floor: 1,161 sq.ft.

Ceiling Height: 8 ft. unless noted

Auxiliary Area

Balcony: 124 sq.ft.



Measured on: March 16, 2020

The floor plan is not suitable for architectural/construction and is covered under E&O. © Excelsior Measuring Inc. 2020. All rights reserved for Excelsior Measuring Inc. Users shall not publish and distribute such material (in whole or in part) and/or incorporate it in other works in any form.





SQ.FT. INCLUDES

- Total square footage is calculated from exterior wall to exterior wall around the perimeter of the house and applicable areas.
- Square footage of stairs counts towards the floor that they service.
- Any area below the stairs on the lowest floor counts as square footage to that floor where ceiling height permits.
- Displayed room dimensions are interior wall to interior wall with the intention of giving the Buyer an idea of what will fit in the room. When added together, room dimensions will not equal to the total square footage.

SQ.FT. DOES NOT INCLUDE

- Area where the ceiling height is 5' or lower. Low vaulted ceiling and areas under stairs are often subject to this.
- Double height ceiling area or Open to Below areas where there is no floor.
- Bay windows, cantilever plant windows, cantilever fireplaces anything that does not extend all the way to the floor.
- Unfinished areas, cold storage, cellars, patios, balconies, decks, garages or other areas that are not suitable to live in year round. (listed separately from the total square footage of the home)

