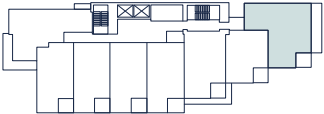




PACIFIC HOUSE
899 ESQUIMALT



PLAN
A

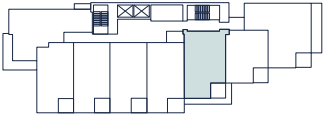
2 Bed, 2 Bath
Interior: 910 SQFT
Exterior: 204-206 SQFT



The developer reserves the right to modify or make substitutes to the building design, materials and any specifications without notice. Renderings, views, and layouts are for illustration purposes only. This is not an offering for sale. Any such offering can only be made with a Disclosure Statement. E&O.E



PACIFIC HOUSE
899 ESQUIMALT



PLAN
C

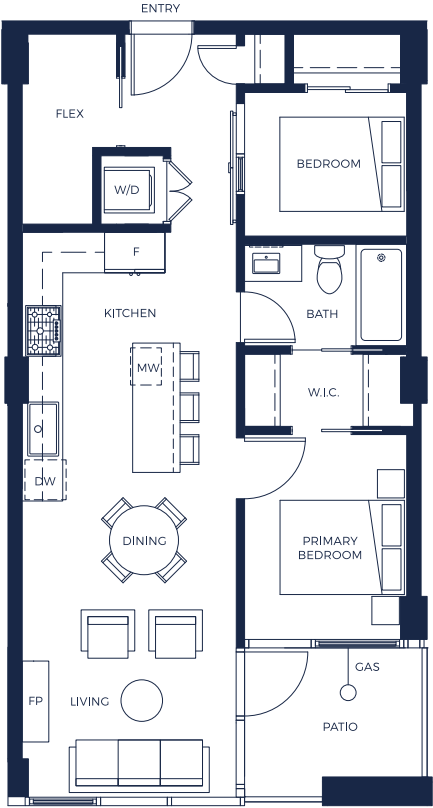
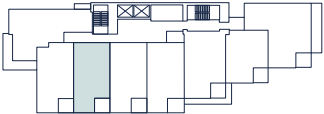
Jr. 2 Bed + Flex, 1 Bath
Interior: 747-748 SQFT
Exterior: 62 SQFT



The developer reserves the right to modify or make substitutes to the building design, materials and any specifications without notice. Renderings, views, and layouts are for illustration purposes only. This is not an offering for sale. Any such offering can only be made with a Disclosure Statement. E&O.E



PACIFIC HOUSE
899 ESQUIMALT



PLAN
D

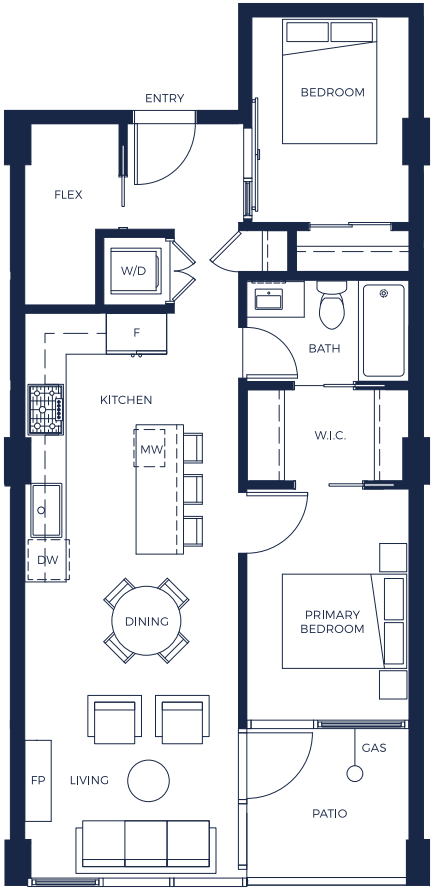
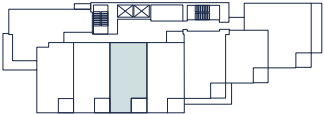
Jr. 2 Bed + Flex, 1 Bath
Interior: 678-679 SQFT
Exterior: 63 SQFT



The developer reserves the right to modify or make substitutes to the building design, materials and any specifications without notice. Renderings, views, and layouts are for illustration purposes only. This is not an offering for sale. Any such offering can only be made with a Disclosure Statement. E&O.E



PACIFIC HOUSE
899 ESQUIMALT



PLAN
D1

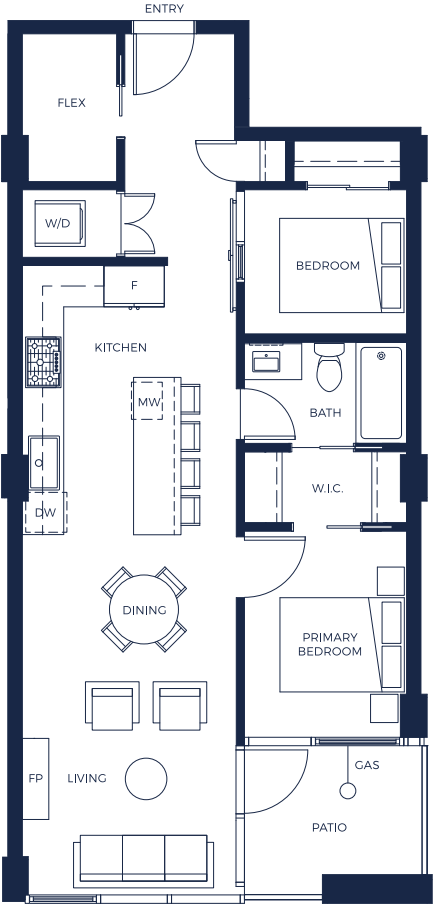
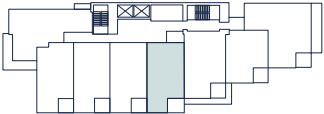
Jr. 2 Bed + Flex, 1 Bath
Interior: 724 SQFT
Exterior: 64 SQFT



The developer reserves the right to modify or make substitutes to the building design, materials and any specifications without notice. Renderings, views, and layouts are for illustration purposes only. This is not an offering for sale. Any such offering can only be made with a Disclosure Statement. E&O.E



PACIFIC HOUSE
899 ESQUIMALT



PLAN
D2

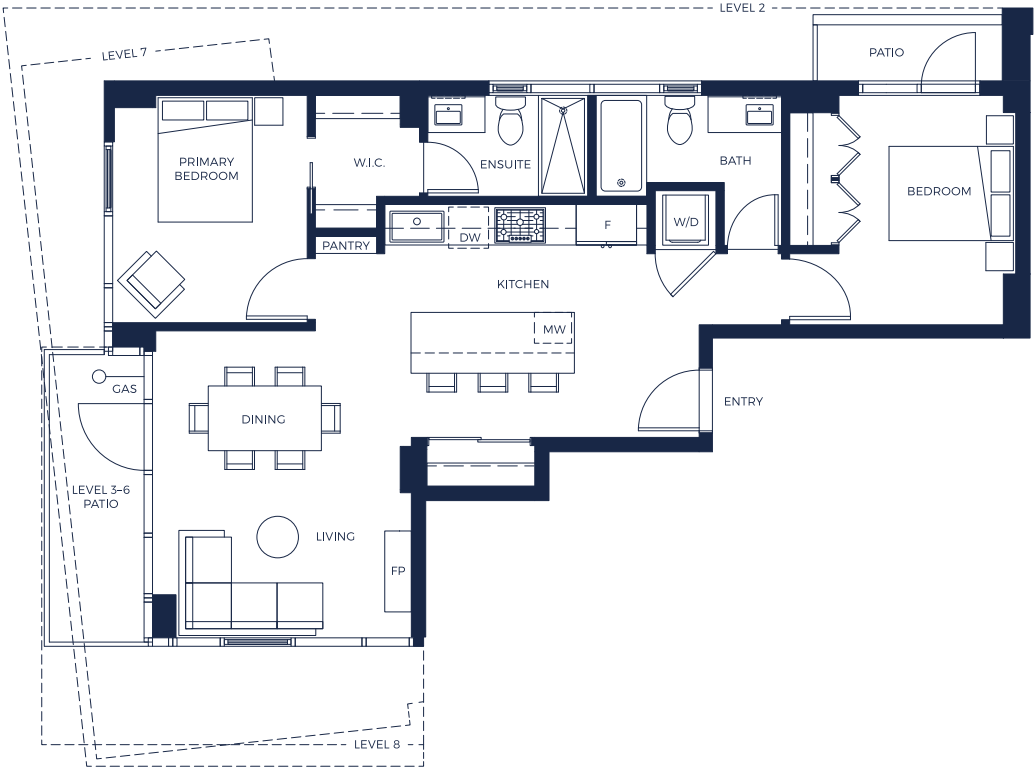
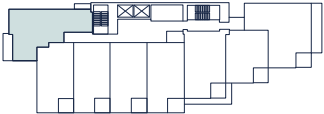
Jr. 2 Bed + Flex, 1 Bath
Interior: 741 SQFT
Exterior: 69 SQFT



The developer reserves the right to modify or make substitutes to the building design, materials and any specifications without notice. Renderings, views, and layouts are for illustration purposes only. This is not an offering for sale. Any such offering can only be made with a Disclosure Statement. E&O.E



PACIFIC HOUSE
899 ESQUIMALT



PLAN
F

2 Bed, 2 Bath
Interior: 843-844 SQFT
Exterior: 124-387 SQFT

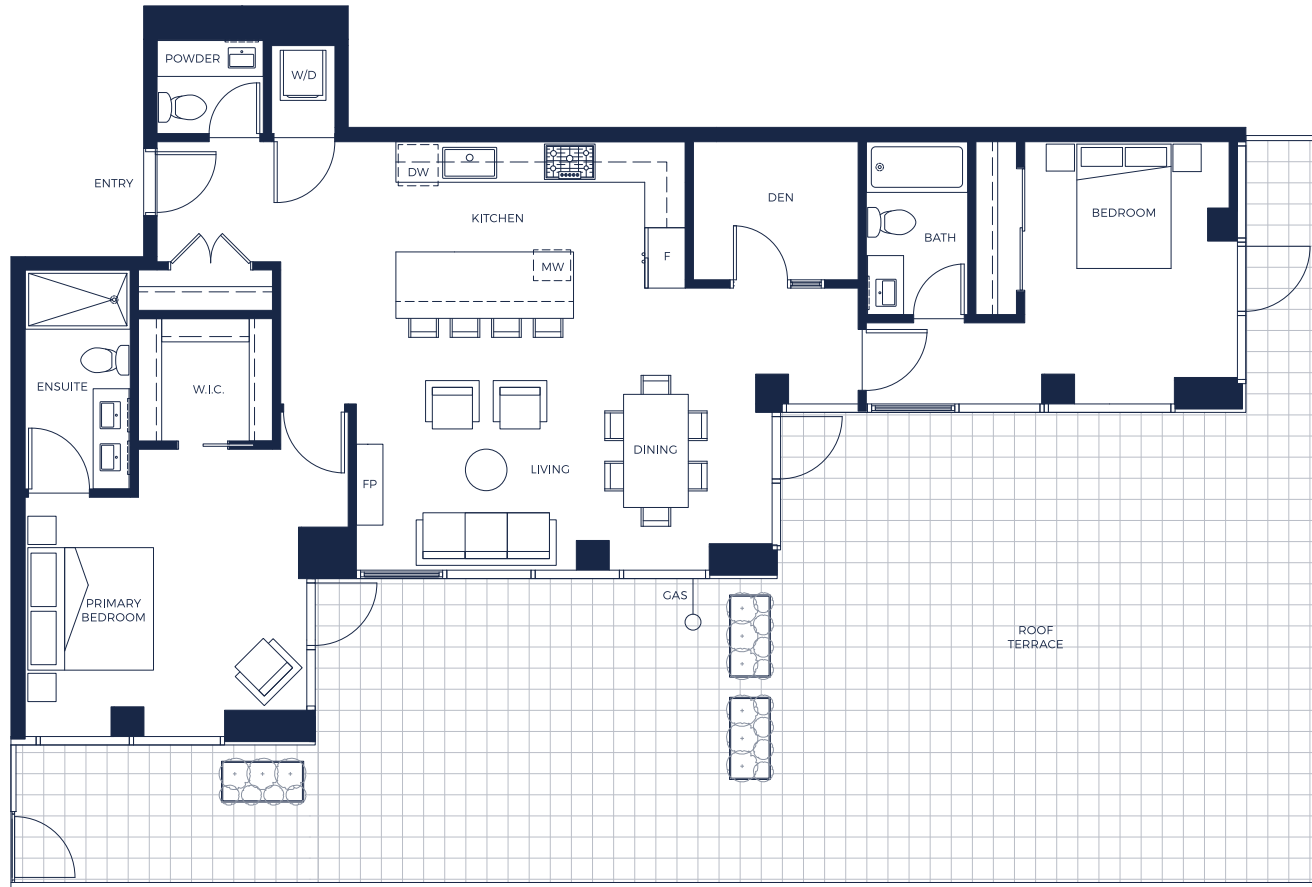
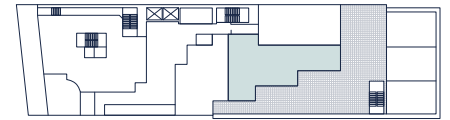


The developer reserves the right to modify or make substitutes to the building design, materials and any specifications without notice. Renderings, views, and layouts are for illustration purposes only. This is not an offering for sale. Any such offering can only be made with a Disclosure Statement. E&O.E



PACIFIC HOUSE

899 ESQUIMALT



PLAN
L

2 Bed + Den, 2.5 Bath

Interior: 1257 SQFT

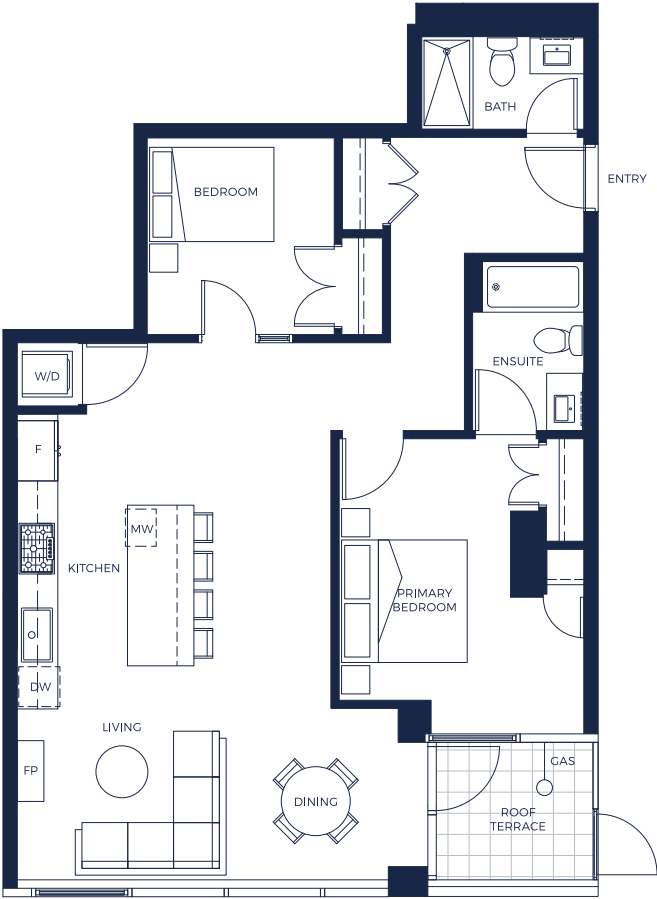
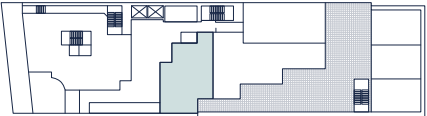
Exterior: 1145 SQFT

MLA CANADA LEXI

The developer reserves the right to modify or make substitutes to the building design, materials and any specifications without notice. Renderings, views, and layouts are for illustration purposes only. This is not an offering for sale. Any such offering can only be made with a Disclosure Statement. E&O.E



PACIFIC HOUSE
899 ESQUIMALT



PLAN
M

Jr. 2 Bed, 2 Bath
Interior: 999 SQFT
Exterior: 54 SQFT

MLA CANADA LEXI

The developer reserves the right to modify or make substitutes to the building design, materials and any specifications without notice. Renderings, views, and layouts are for illustration purposes only. This is not an offering for sale. Any such offering can only be made with a Disclosure Statement. E&O.E