



CENTRAL BLOCK  
BY ABSTRACT



# *Live life in full colour*

We believe a home is a form of  
expression, a blank canvas where we  
can let our true colours shine.



**ABSTRACT**  
developments

# *Welcome Home*

It's condo living, reimagined.  
Central Block represents a vibrant  
and contemporary lifestyle.

It's a place where intelligent design  
and quality materials intersect to  
meet you where you are, with highly  
functional homes that reflect  
comfortable West Coast living.







## *Inspired Surroundings*

Surrounded by green space and steps to the Gorge Waterway, Central Block's location truly represents the best of all worlds.

A well-connected neighbourhood means everyday essentials are close to home, while a vibrant setting offers lots to see and do. It's a location where big trees, grassy fields and water views greet you at your front door.

# Neighbourhood & Area

## Recreation & Outdoors

- 1 Esquimalt Gorge Park
- 2 Lampson Park
- 3 Saxe Point Park
- 4 Banfield Park
- 5 Archie Browning Sports Centre
- 6 Gorge Vale Golf Club
- 7 Highrock Park
- 8 MacAulay Point Park

## Groceries & Essentials

- 9 Save on Foods
- 10 London Drugs
- 11 Fairway Market
- 12 Whole Foods
- 13 Red Barn Market
- 14 Country Grocer
- 15 Esquimalt Farmer's Market (Seasonal)

## Shopping & Services

- 16 Uptown Centre
- 17 Tillicum Centre
- 18 Mayfair Shopping Centre
- 19 Hudson's Bay
- 20 Gateway Village
- 21 Saanich Plaza
- 22 Downtown Victoria

--- Galloping Goose Trail

## Dining & Refreshments

- 23 Glo Restaurant & Lounge
- 24 Lighthouse Brewery
- 25 Brown's Crafthouse
- 26 Fry's Red Wheat Bakery
- 27 Fantastico Bar & Deli
- 28 Foi Epi
- 29 Boom & Batten Restaurant & Café
- 30 La Belle Patate
- 31 Thai Green Elephant Restaurant
- 32 Esquimalt Roasting Company

## Education

- 33 Vic West Elementary (K-5)
- 34 Rockheights Middle School (6-8)
- 35 Esquimalt High School (9-12)
- 36 University of Victoria (UVIC)
- 37 Camosun College Interurban
- 38 Camosun College Lansdowne









## *West Coast Sensibility*

Central Block's distinctively understated West Coast architectural design marries clean lines with a warm palette featuring high-quality and durable materials.

Contrasting dark and light elements complement cedar clad finishes for a modern, yet lasting aesthetic.



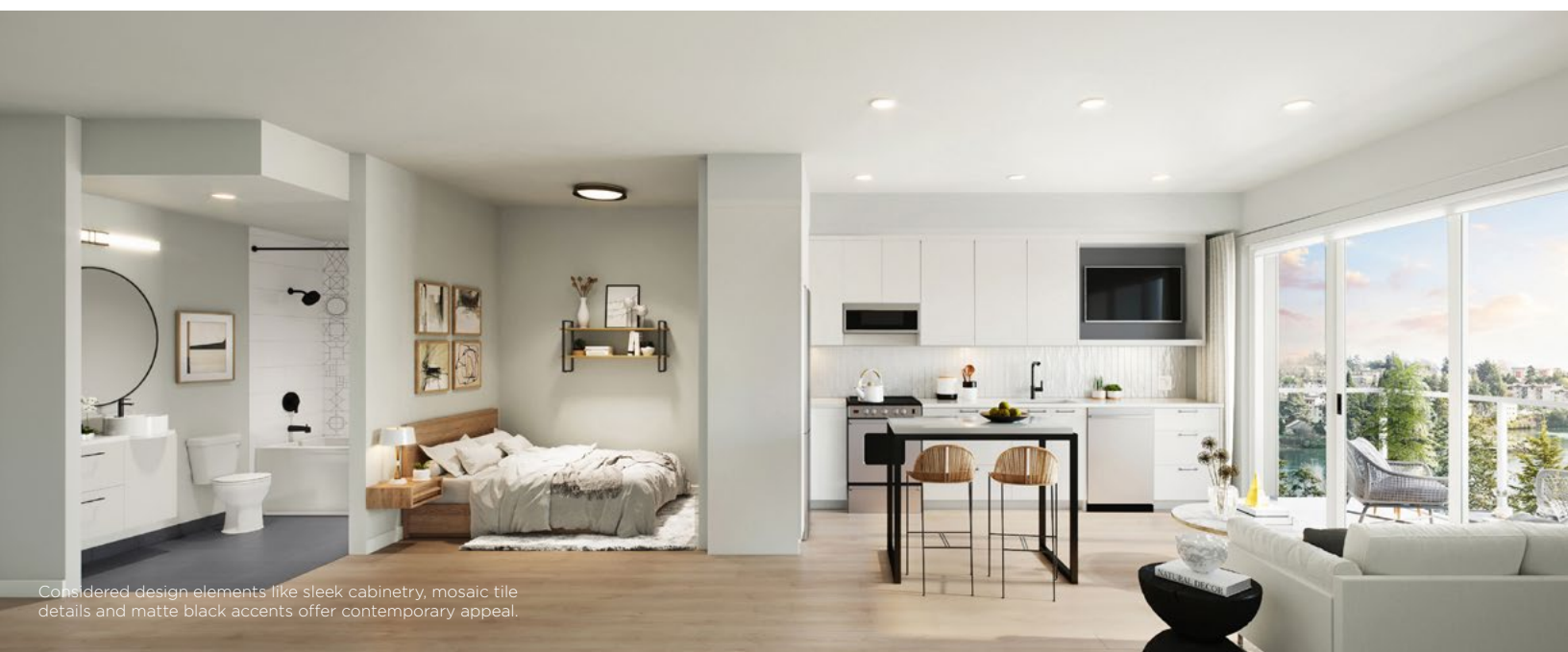


## *Intelligent Living*

We set out to create a diverse collection of thoughtful homes for a range of needs. From junior one to three bedroom homes, each features living spaces that feel bright and airy, highlighted by overheight main areas and expansive windows.

Every intelligently designed layout has been contemplated to maximize livability for today and tomorrow, with flexible spaces and generous storage throughout.





# *Make it Yours*

Featuring a designer-curated collection of a dozen palette combinations, interiors are envisioned to help you create a living space that's the perfect backdrop for your life.

Select from two distinct interior base palettes - light and medium, plus six outdoor inspired and timeless accent colours, to personalize your home.



OAK LEAF







# Natural Connections

Inspired by the scenic natural surroundings, Central Block's Portage shared amenity areas offer tranquil, social, and functional spaces.

Whether you're looking for a place to relax, entertain, or work, there's always one close by.

**Portage Rooftop**  
**Portage Commons**  
**Portage Gardens**

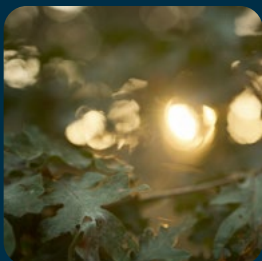
Nature takes a front seat with a rooftop patio designed like an expansive outdoor living room, perfect for sharing and taking in the views.



Portage Commons is a creative place for co-working and socializing alike.



Gardens offer serene and private outdoor space with multiple seating areas for year-round use.



## *Functional Floorplans*

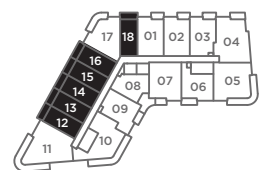
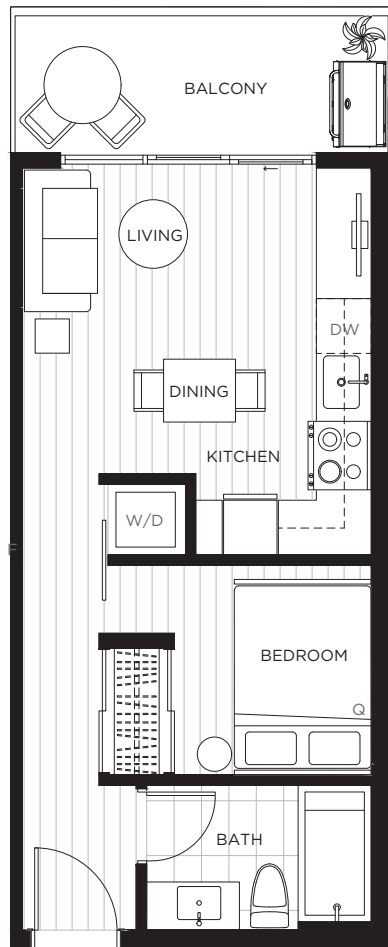
Following is a sample of the floorplans available at Central Block. View the complete set of plans and learn more by scheduling an appointment with our sales team at:

**Central Block Sales Team**

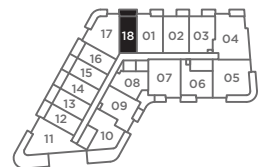
**P** 250.590.5130  
**E** [info@centralblock.ca](mailto:info@centralblock.ca)  
**centralblock.ca**



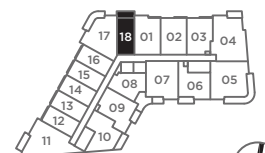
CENTRAL BLOCK  
BY ABSTRACT



LEVELS 2-4



LEVEL 5



LEVEL 6



**A3**

**Jr 1 Bedroom, 1 Bath**

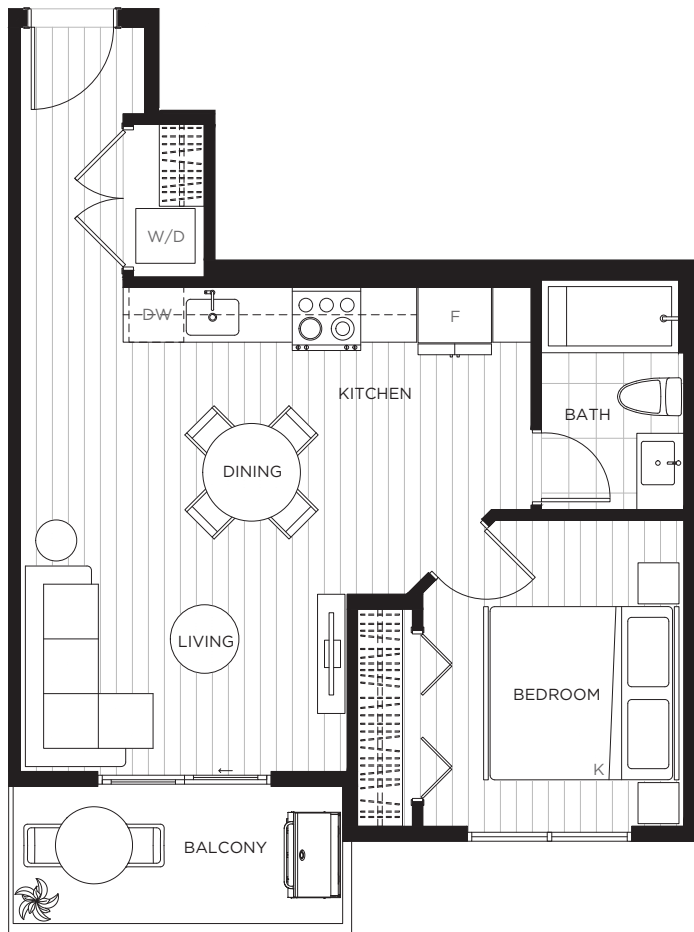
Interior 392-394 sf | Exterior 67-68 sf | **Total 459-462 sf**





# CENTRAL BLOCK

BY ABSTRACT



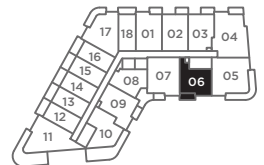
## B3

### 1 Bedroom, 1 Bath

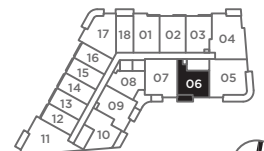
Interior 557 sf | Exterior 60 sf | Total 617 sf



LEVELS 2-4



LEVEL 5



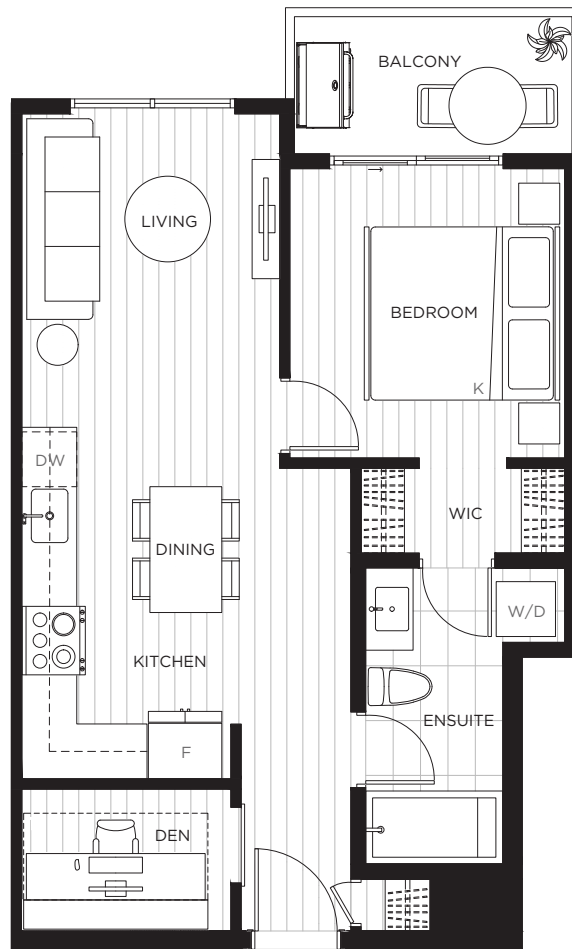
LEVEL 6





# CENTRAL BLOCK

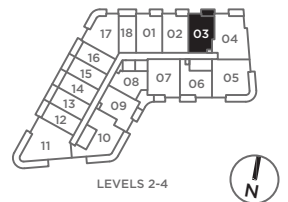
BY ABSTRACT



## C4

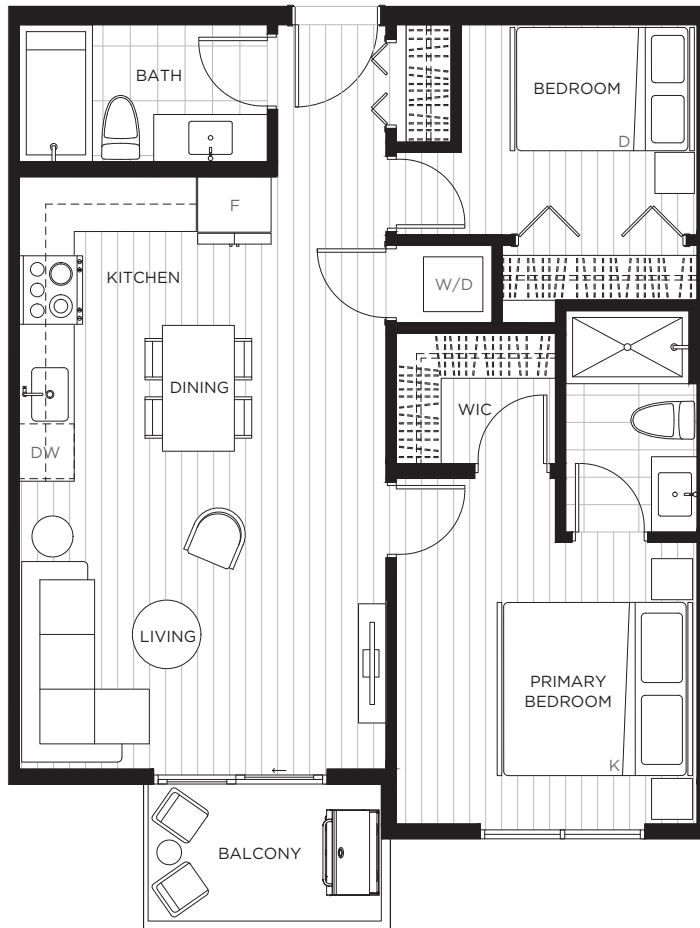
### 1 Bedroom, 1 Bath + Den

Interior 587 sf | Exterior 51 sf | Total 638 sf





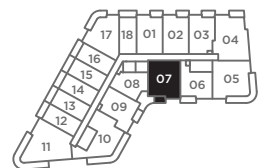
CENTRAL BLOCK  
BY ABSTRACT



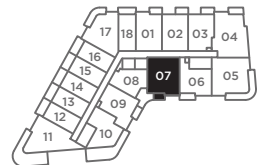
**D10**

**Jr. 2 Bedroom, 2 Bath**

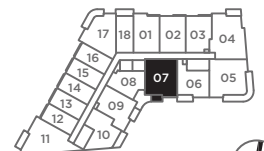
Interior 733 sf | Exterior 43 sf | Total 776 sf



LEVELS 2-4



LEVEL 5



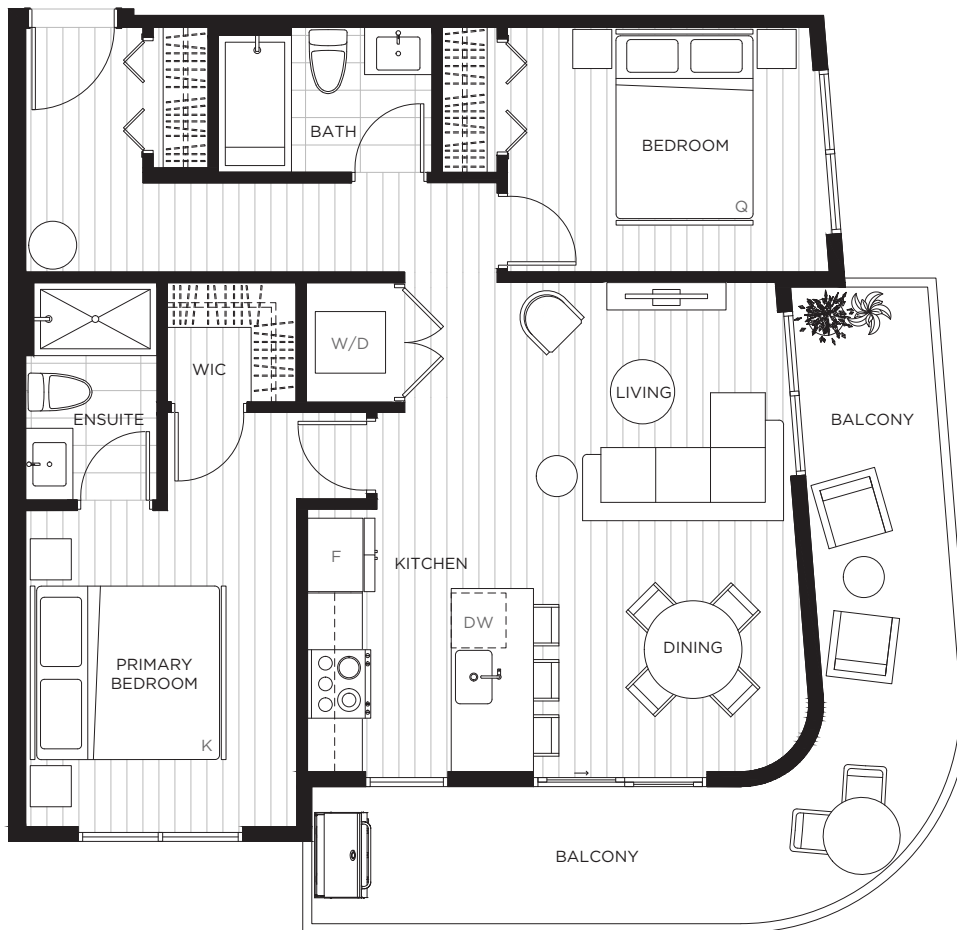
LEVEL 6







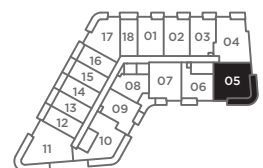
CENTRAL BLOCK  
BY ABSTRACT



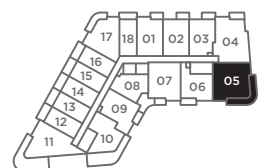
**F5**

**2 Bedroom, 2 Bath**

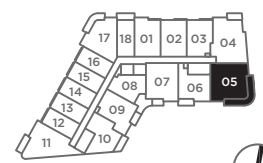
Interior 835 sf | Exterior 198 sf | Total 1033 sf



LEVELS 2-4



LEVEL 5



LEVEL 6





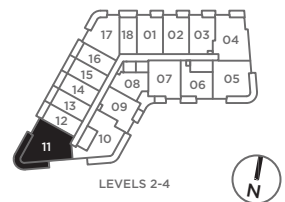
CENTRAL BLOCK  
BY ABSTRACT



**G1**

**3 Bedroom, 2 Bath**

Interior 942 sf | Exterior 253 sf | **Total 1195 sf**

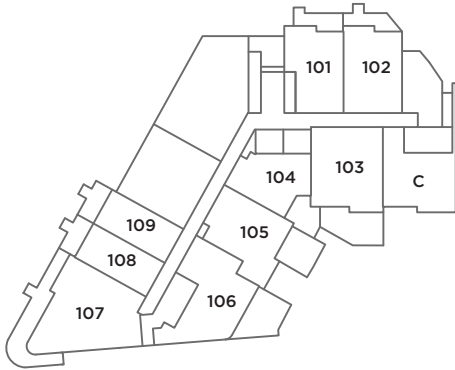




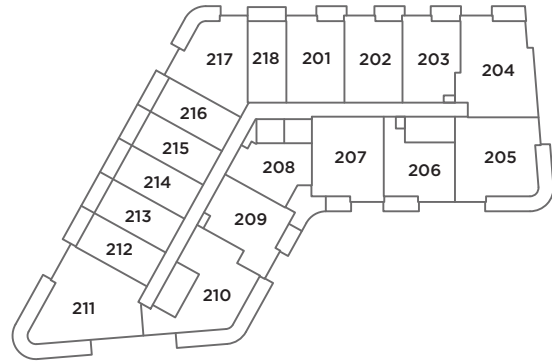
CENTRAL BLOCK  
BY ABSTRACT



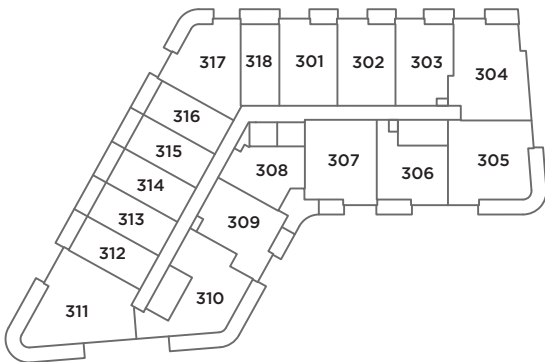
## Site Plan



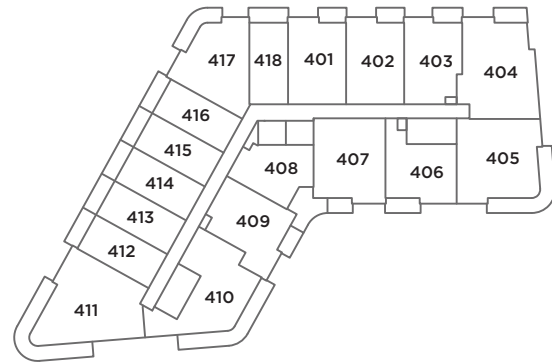
LEVEL 1



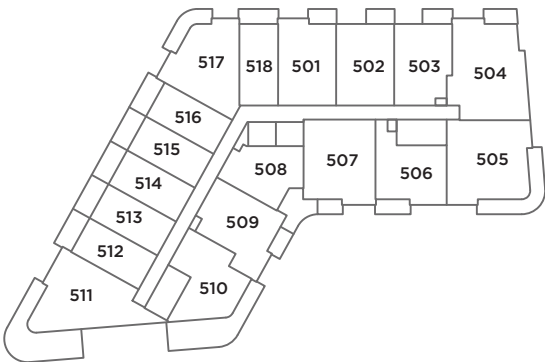
LEVEL 2



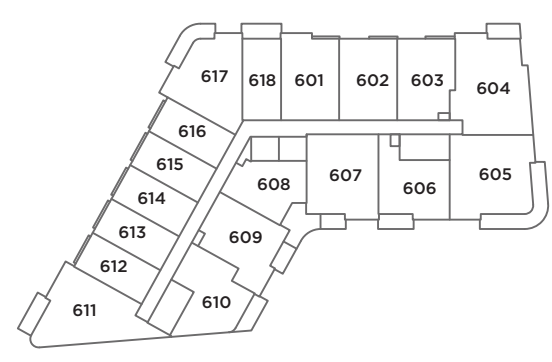
LEVEL 3



LEVEL 4



LEVEL 5



LEVEL 6



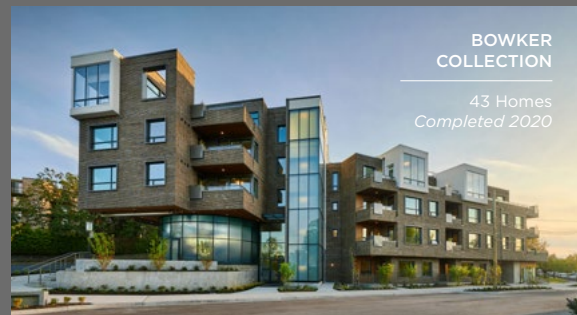
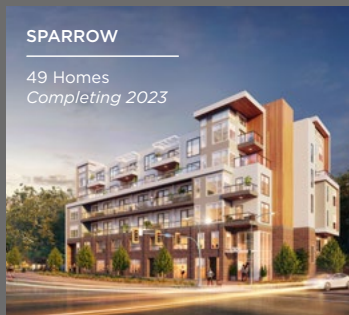




# Creating Iconic Spaces

**Abstract doesn't just construct homes, we help build communities.**

Our meticulous, time-tested development process spans years, from the initial concept through to completion and is driven by personal engagement with a variety of stakeholders to design meaningful residences that contribute to the local community. Since 1999, Abstract has built more than 700 single and multi-family homes in neighbourhoods across Greater Victoria.



# *In Good Company*

Central Block was envisioned through a collaboration with an acclaimed team of project partners who are committed to creating exceptionally livable communities.



## Architecture

Urban West Architecture Inc. is a full-service architectural firm based in Vancouver. Their work spans a variety of project types including single and multi-family residences and mixed-use, commercial buildings, with projects located throughout the Lower Mainland, Vancouver Island and along the Sea-to-Sky corridor. Inspired by modernist design and the beautiful west coast landscape, UWA strives to create projects that provide a strong sense of place and have a meaningful social and environmental impact on their surrounding communities.



## Interiors

Founded in 2003, I3 design has spent the past nearly two decades forging strong client relationships while building an impressive track record in the multi-family home industry. As a multi-disciplinary, full-service design firm, I3 is equipped to assist with projects from the initial design stage through to marketing. Their diverse client list has provided opportunities to work throughout the Lower Mainland and Fraser Valley, Okanagan, Whistler as well as in Alberta and Ontario.



## Landscape

Murdoch de Greeff Inc. was formed by Scott Murdoch and Paul de Greeff in 2007. Their planning and design approach is based on the notion that having a thorough understanding of a site's natural opportunities and constraints is the cornerstone to logical and sustainable solutions.



**CENTRAL BLOCK**  
BY ABSTRACT

**Abstract Home Store**  
3198 Douglas Street  
Victoria, BC V8Z 3K6

P 250.590.5130  
E [info@centralblock.ca](mailto:info@centralblock.ca)  
[centralblock.ca](http://centralblock.ca)



**ABSTRACT**  
developments

