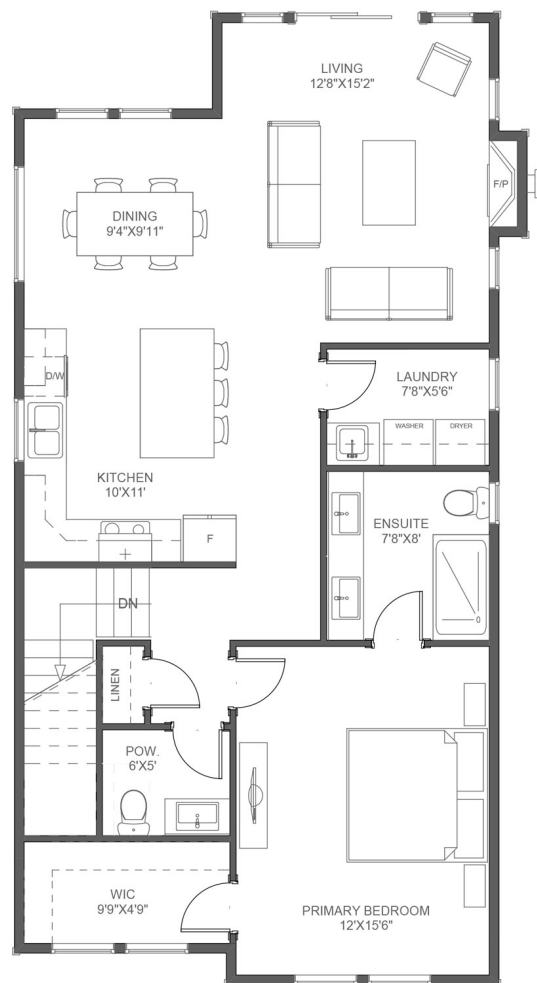
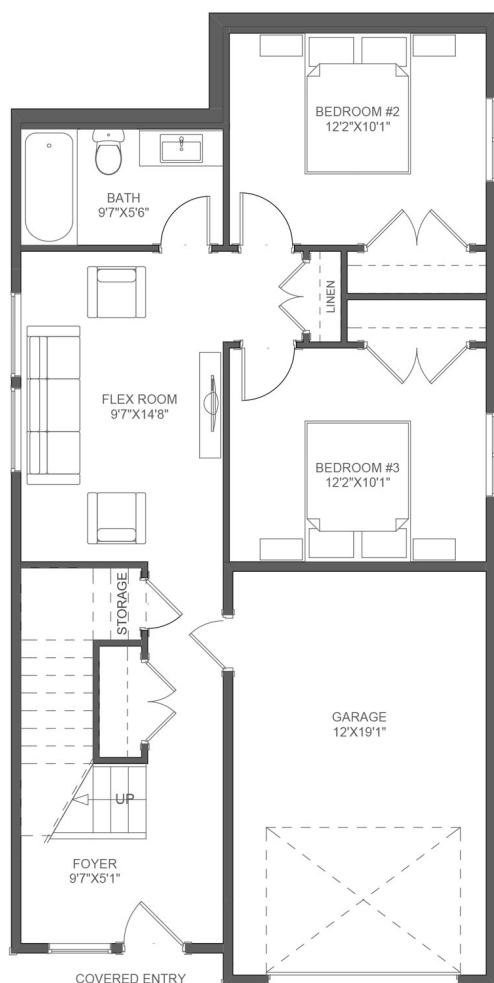




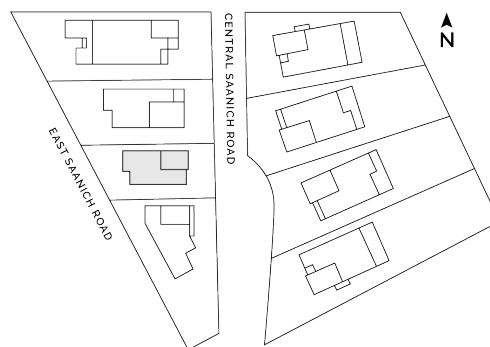
HARVEST

LOT 2

3 Bedroom



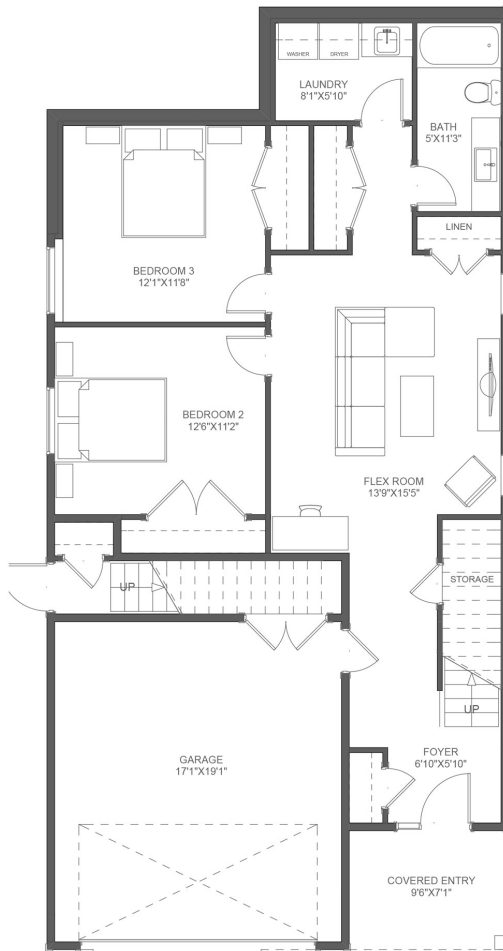
BEDROOMS	3
BATHROOMS	2.5
MAIN FLOOR	1,006 SQFT
LOWER FLOOR	741SQFT
TOTAL SPACE	1,747 SQFT
GARAGE	259 SQFT



HARVESTRIDGGLIVING.CA

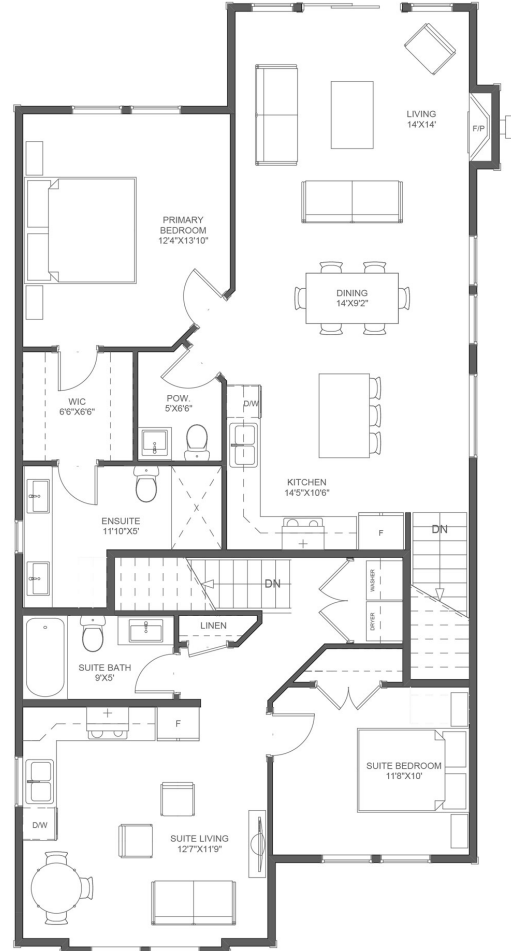
Harvest Ridge General Partner Ltd. is the developer of Harvest Ridge. Illustrations, renderings, plans, designs, specifications, finishings and views are proposals only and may be altered or varied from those of the actual development. This is not an offering for sale.

3 Bedroom + 1 Bedroom Legal Suite



MAIN FLOOR PLAN (9' CEILING)

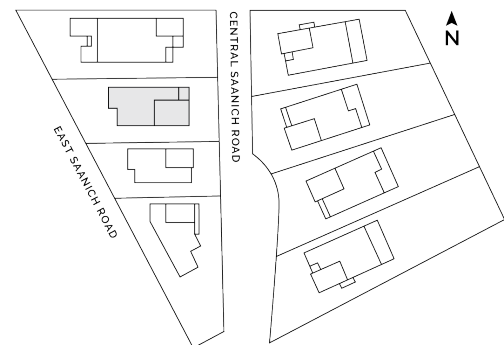
MAIN FLOOR AREA: 964.603 Sq Ft
GARAGE AREA: 425.250 Sq Ft



UPPER FLOOR PLAN (9' CEILING)

UPPER FLOOR AREA: 867.13 Sq Ft
SUITE FLOOR AREA: 540.30 Sq Ft

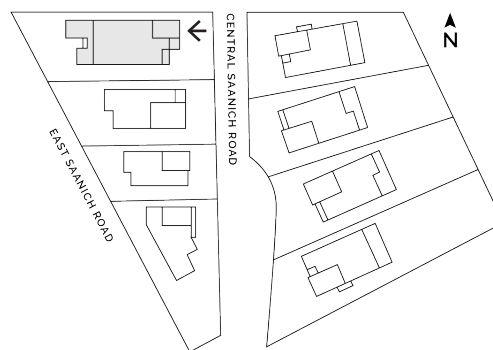
BEDROOMS	4
BATHROOMS	3.5
MAIN FLOOR	965 SQFT
UPPER FLOOR	1,407 SQFT
TOTAL SPACE	2,372 SQFT
GARAGE	425 SQFT



3 Bedroom Strata Duplex + Office



BEDROOMS	3
BATHROOMS	2
MAIN FLOOR	1,441 SQFT
TOTAL SPACE	1,441 SQFT
GARAGE	245 SQFT



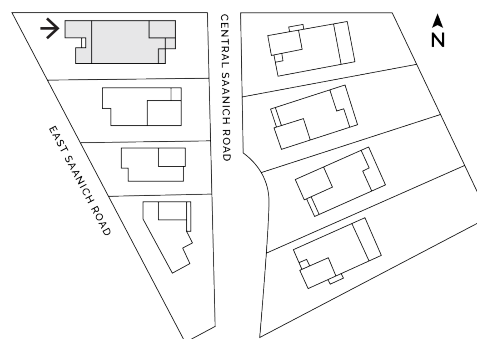


LOT 4, B

3 Bedroom Strata Duplex + Office



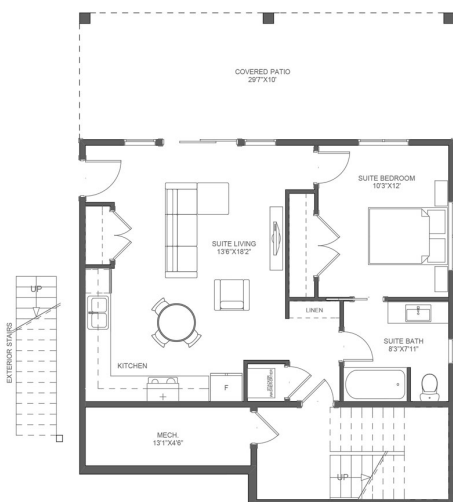
BEDROOMS	3
BATHROOMS	2
MAIN FLOOR	1,481 SQFT
TOTAL SPACE	1,481 SQFT
GARAGE	245 SQFT



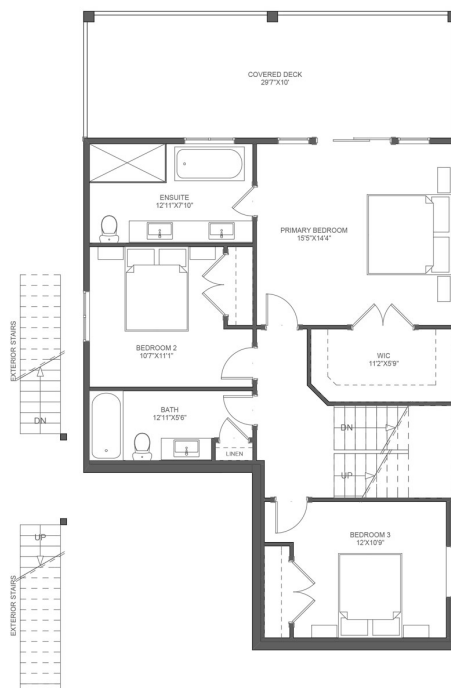
HARVESTRIDGGLIVING.CA

Harvest Ridge General Partner Ltd. is the developer of Harvest Ridge. Illustrations, renderings, plans, designs, specifications, finishings and views are proposals only and may be altered or varied from those of the actual development. This is not an offering for sale.

3 Bedroom + Home Office + 1 Bedroom Legal Suite



LOWER FLOOR PLAN (9' CEILING)
LOWER FLOOR AREA: 191.99 Sq Ft
SUITE FLOOR AREA: 611.39 Sq Ft

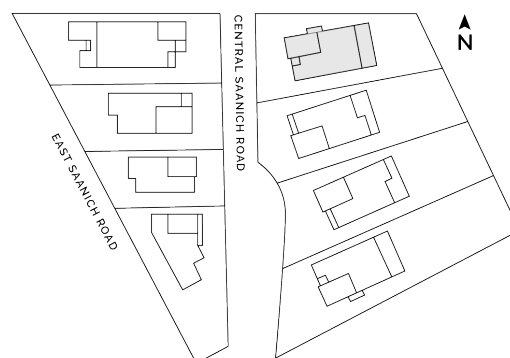


MIDDLE FLOOR PLAN (9' CEILING)
MIDDLE FLOOR AREA: 980.21 Sq Ft

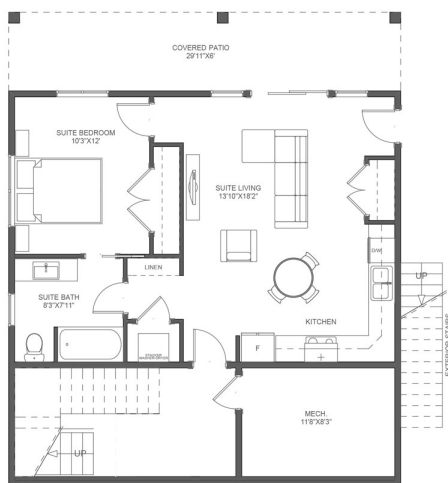


MAIN FLOOR PLAN (9' CEILING)
MAIN FLOOR AREA: 1,050.41 Sq Ft
GARAGE FLOOR AREA: 307.57 Sq Ft

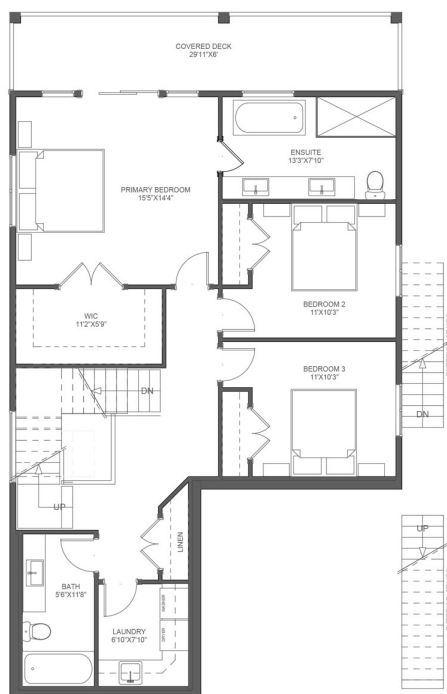
BEDROOMS	4
BATHROOMS	3.5
MAIN FLOOR	1,050 SQFT
MIDDLE FLOOR	980 SQFT
LOWER FLOOR	803 SQFT
TOTAL SPACE	2,833 SQFT
GARAGE	308 SQFT



3 Bedroom + Home Office + 1 Bedroom Legal Suite



○ LOWER FLOOR PLAN (9' CEILING)
LOWER FLOOR AREA: 261.80 Sq Ft
SUITE FLOOR AREA: 632.00 Sq Ft

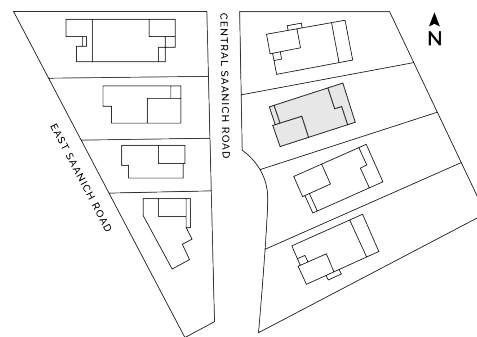


○ MIDDLE FLOOR PLAN (9' CEILING)
MIDDLE FLOOR AREA: 1,102.87 Sq Ft

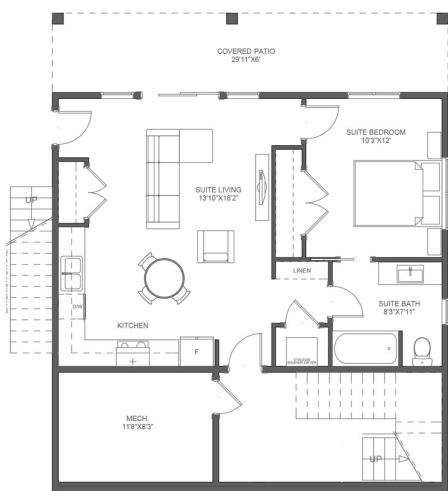


○ MAIN FLOOR PLAN (9' CEILING)
MAIN FLOOR AREA: 1,040.93 Sq Ft
GARAGE FLOOR AREA: 352.00 Sq Ft

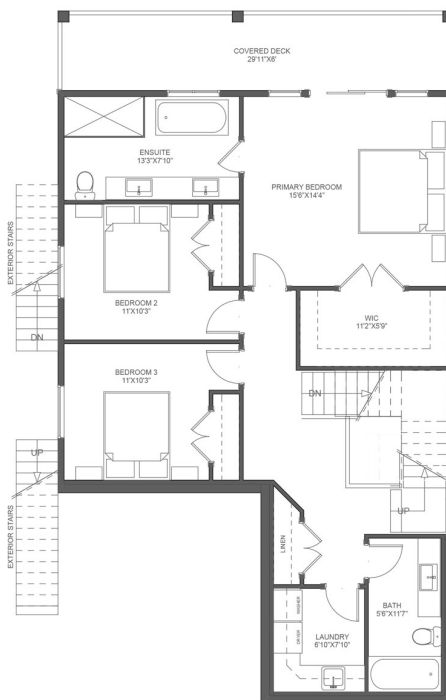
BEDROOMS	4
BATHROOMS	3.5
MAIN FLOOR	1,041 SQFT
MIDDLE FLOOR	1,103 SQFT
LOWER FLOOR	894 SQFT
TOTAL SPACE	3,038 SQFT
GARAGE	352 SQFT



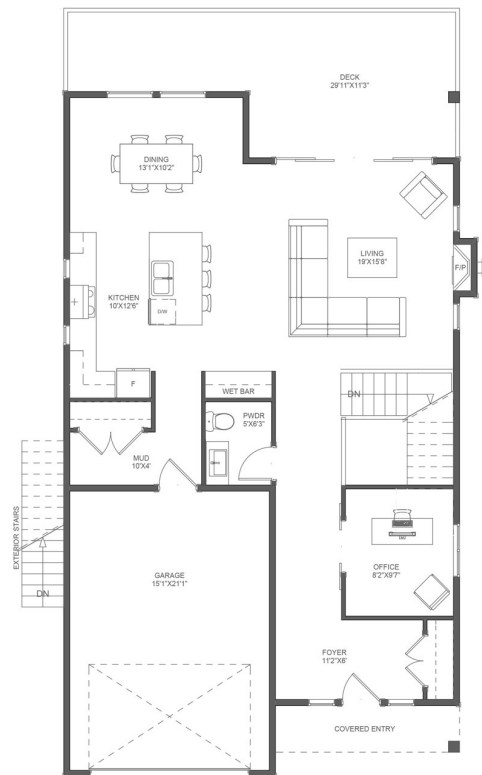
3 Bedroom + Home Office + 1 Bedroom Legal Suite



LOWER FLOOR PLAN (9' CEILING)
LOWER FLOOR AREA: 247.91 Sq Ft
SUITE FLOOR AREA: 631.99 Sq Ft

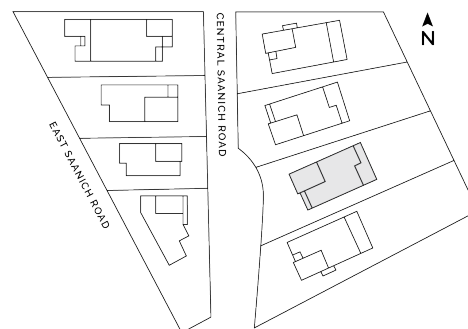


MIDDLE FLOOR PLAN (9' CEILING)
MIDDLE FLOOR AREA: 1,102.87 Sq Ft

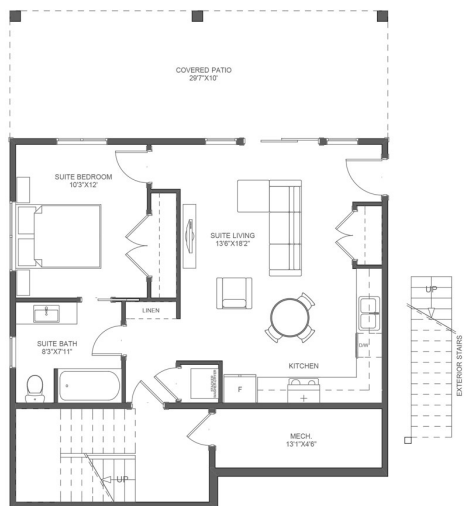


MAIN FLOOR PLAN (9' CEILING)
MAIN FLOOR AREA: 1,040.93 Sq Ft
GARAGE FLOOR AREA: 352.00 Sq Ft

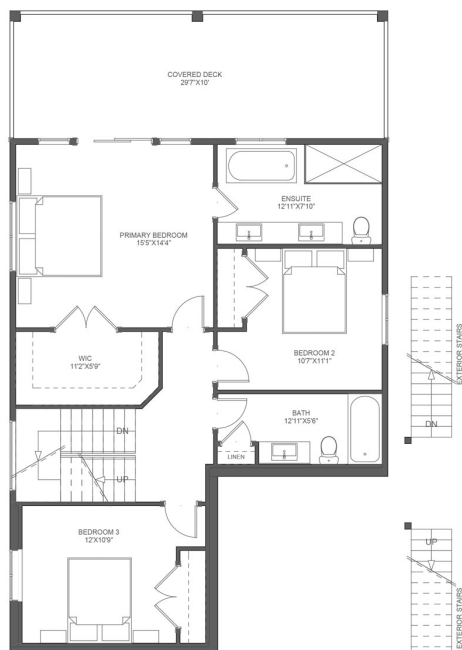
BEDROOMS	4
BATHROOMS	3.5
MAIN FLOOR	1,041 SQFT
MIDDLE FLOOR	1,103 SQFT
LOWER FLOOR	880 SQFT
TOTAL SPACE	3,024 SQFT
GARAGE	352 SQFT



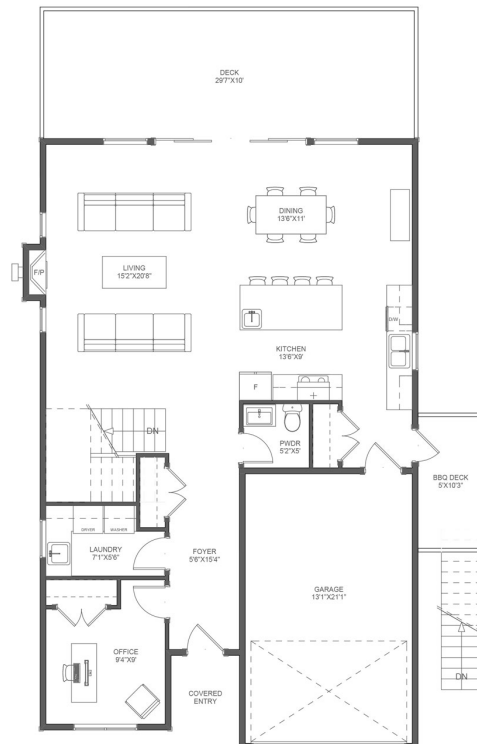
3 Bedroom + Home Office + 1 Bedroom Legal Suite



○ LOWER FLOOR PLAN (9' CEILING)
LOWER FLOOR AREA: 178.47 Sq Ft
SUITE FLOOR AREA: 624.95 Sq Ft



○ MIDDLE FLOOR PLAN (9' CEILING)
MIDDLE FLOOR AREA: 980.72 Sq Ft



○ MAIN FLOOR PLAN (9' CEILING)
MAIN FLOOR AREA: 1,050.98 Sq Ft
GARAGE FLOOR AREA: 308.00 S Ft

BEDROOMS	4
BATHROOMS	3.5
MAIN FLOOR	1,051 SQFT
MIDDLE FLOOR	981 SQFT
LOWER FLOOR	803 SQFT
TOTAL SPACE	2,835 SQFT
GARAGE	352 SQFT

