



REUNION
#1
BELMONT

Plan A

**1 Bedroom + Flex,
1 Bath**

Interior: 735-770 sq.ft.

Outdoor: 90-213 sq.ft.

LEVEL 1 AREA

Interior: 735 sq.ft. ;

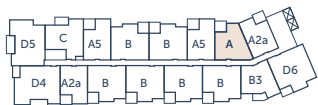
Patio: 213 sq.ft.

LEVELS 2-5 AREA:

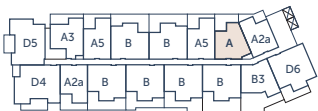
Interior: 770 sq.ft.

Balcony: 90 sq.ft.

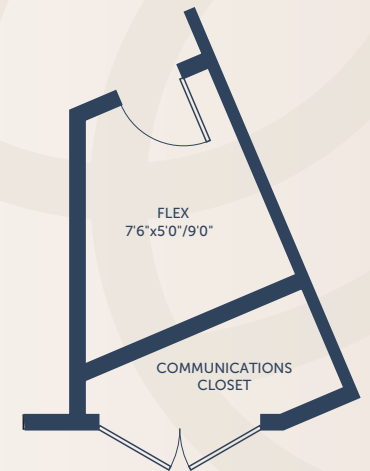
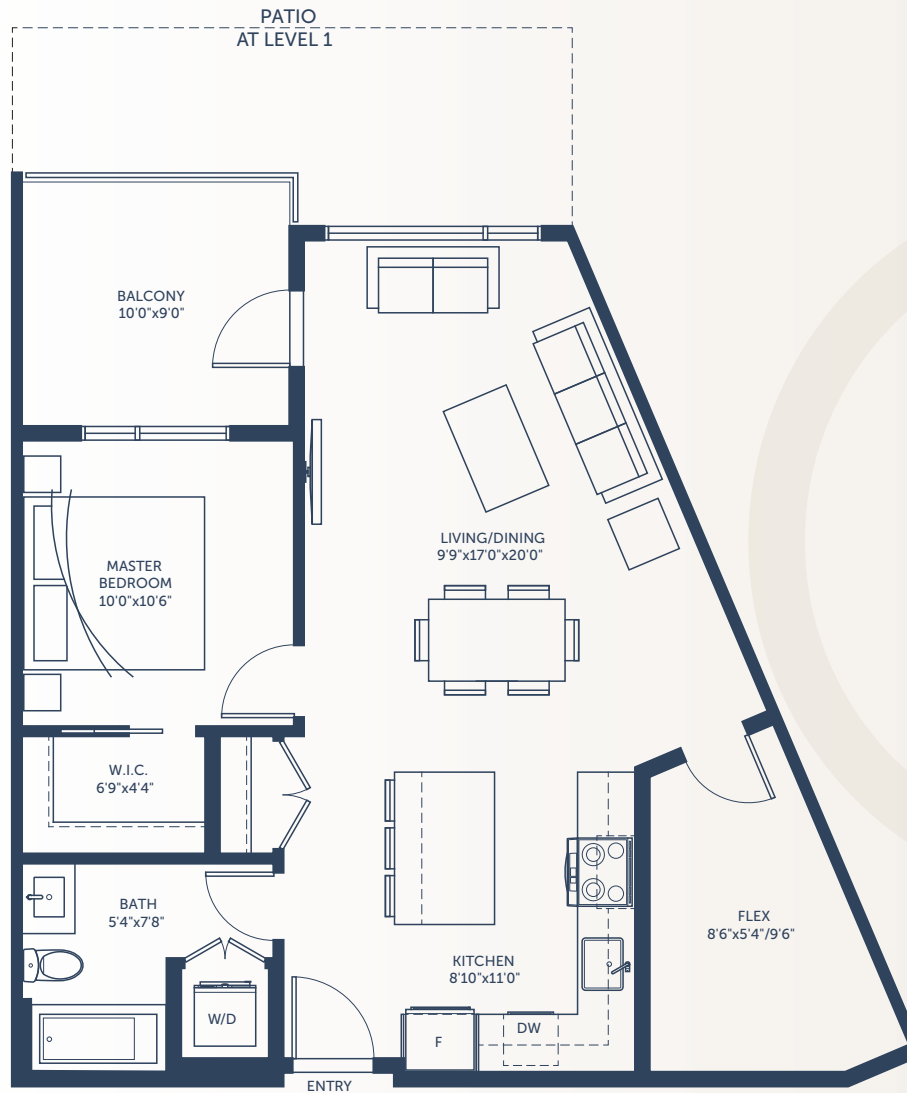
Units: #132, #232, #332, #432, #532



WEST | LEVELS 2-5



WEST | LEVEL 1



UNIT A @ Level 1

LED COR PROPERTY INVESTMENTS

In our continuing effort to improve and maintain the high standard of the Reunion at Belmont development, the developer reserves the right to modify or change plans, specifications, features and prices without notice. Materials and equipment (including appliances) may be substituted with equivalent or better at the developer's sole discretion. All dimensions and sizes are approximate and are based on preliminary architectural measurements. As reverse, flipped and/or mirrored plans occur throughout the development, please see architectural plans if this is material to your decision to purchase. Renderings and images provided are an artist's conception and are intended only as a general reference and are not to be relied upon. E&O.E. Sales and Marketing provided by Fifth Avenue Real Estate Marketing Ltd. www.fifthave.ca and DFH Real Estate Ltd. www.dfh.ca



REUNION
#1111
BELMONT

Plan A2a

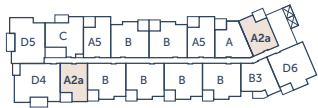
**1 Bedroom + Flex,
1 Bath**

Interior: 698 sq.ft.

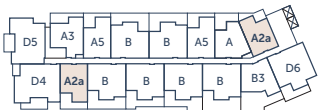
Outdoor: 80-207 sq.ft.

Units:

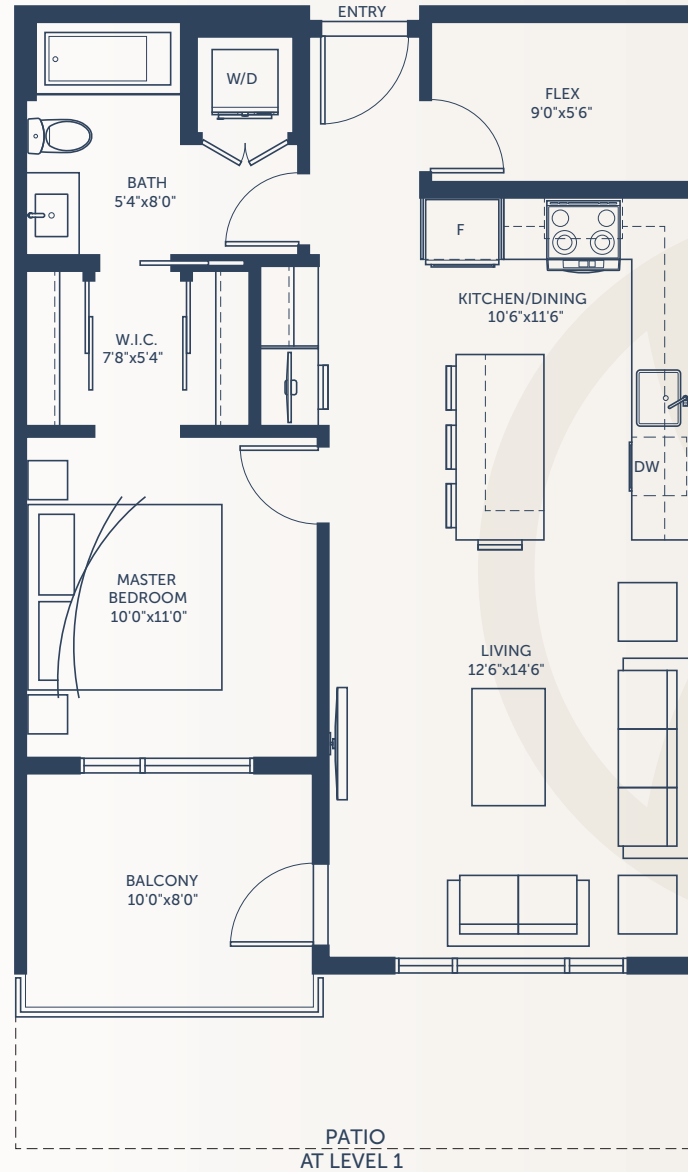
#133, #130, #233, #230, #333, #330,
#433, #430, #533, #530



BLDG 4 | LEVELS 2-5



BLDG 4 | LEVEL 1



LEDCOR PROPERTY INVESTMENTS

In our continuing effort to improve and maintain the high standard of the Reunion at Belmont development, the developer reserves the right to modify or change plans, specifications, features and prices without notice. Materials and equipment (including appliances) may be substituted with equivalent or better at the developer's sole discretion. All dimensions and sizes are approximate and are based on preliminary architectural measurements. As reverse, flipped and/or mirrored plans occur throughout the development, please see architectural plans if this is material to your decision to purchase. Renderings and images provided are an artist's conception and are intended only as a general reference and are not to be relied upon. E&O.E. Sales and Marketing provided by Fifth Avenue Real Estate Marketing Ltd. www.fifthave.ca and DFH Real Estate Ltd. www.dfh.ca



REUNION

#142
BELMONT

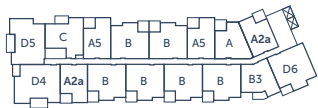
Plan A3

1 Bedroom + Flex,
1 Bath

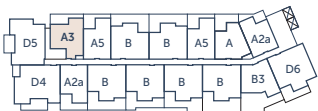
Interior: 774 sq.ft.

Outdoor: 181 sq.ft.

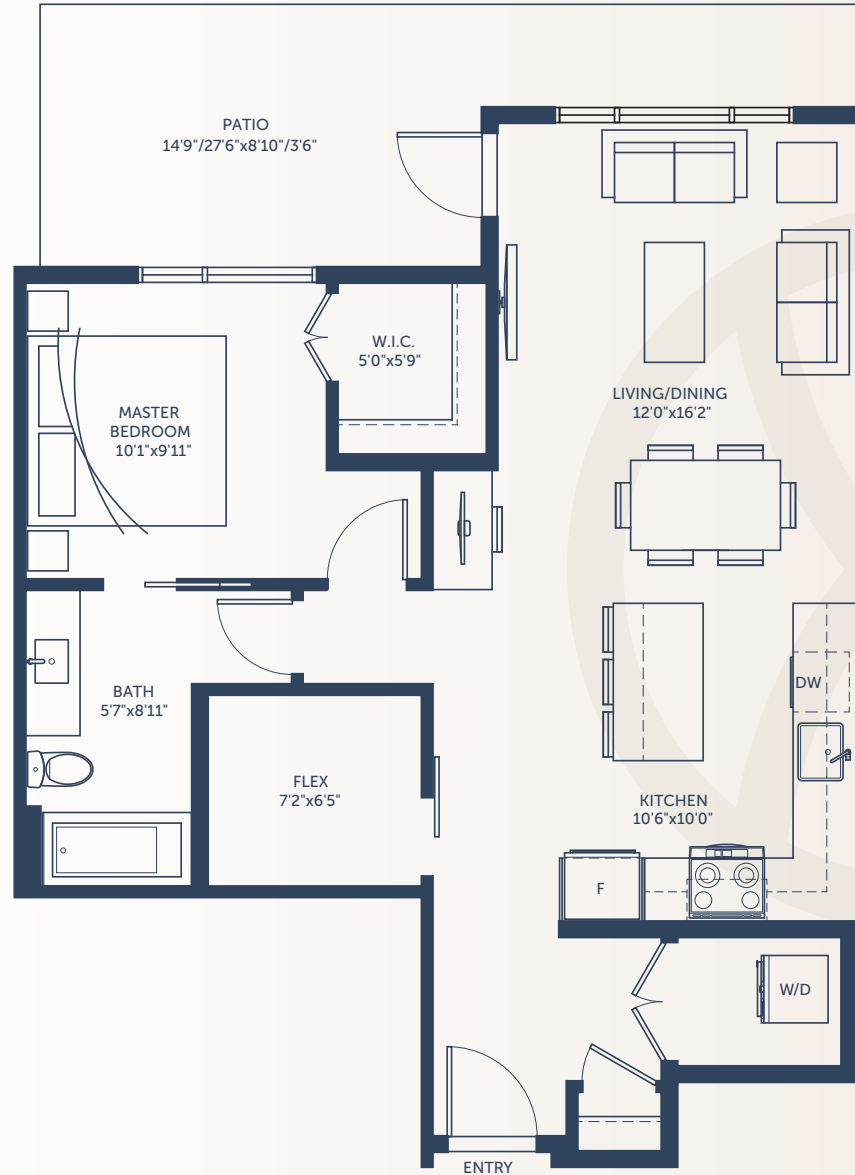
Unit: #142



BLDG 4 | LEVELS 2-5



BLDG 4 | LEVEL 1



LEDCOR PROPERTY INVESTMENTS

In our continuing effort to improve and maintain the high standard of the Reunion at Belmont development, the developer reserves the right to modify or change plans, specifications, features and prices without notice. Materials and equipment (including appliances) may be substituted with equivalent or better at the developer's sole discretion. All dimensions and sizes are approximate and are based on preliminary architectural measurements. As reverse, flipped and/or mirrored plans occur throughout the development, please see architectural plans if this is material to your decision to purchase. Renderings and images provided are an artist's conception and are intended only as a general reference and are not to be relied upon. E&O.E. Sales and Marketing provided by Fifth Avenue Real Estate Marketing Ltd. www.fifthave.ca and DFH Real Estate Ltd. www.dfh.ca



REUNION

#110
BELMONT

Plan A5

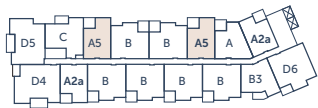
1 Bedroom + Flex,
1 Bath

Interior: 729 sq.ft.

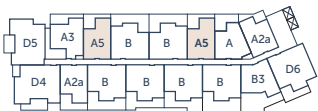
Outdoor: 87-177 sq.ft.

Units:

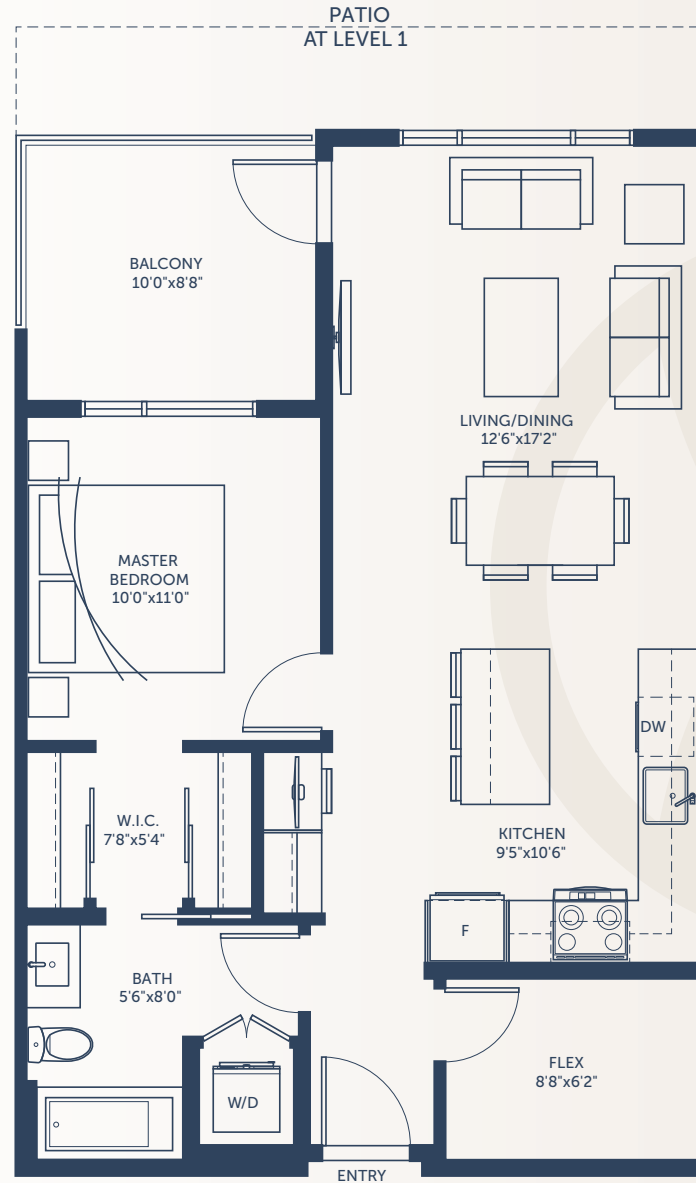
#140, #134, #240, #234, #340, #334,
#440, #434, #540 (PH), #534 (PH)



BLDG 4 | LEVELS 2-5



BLDG 4 | LEVEL 1



LEDCOR PROPERTY INVESTMENTS

In our continuing effort to improve and maintain the high standard of the Reunion at Belmont development, the developer reserves the right to modify or change plans, specifications, features and prices without notice. Materials and equipment (including appliances) may be substituted with equivalent or better at the developer's sole discretion. All dimensions and sizes are approximate and are based on preliminary architectural measurements. As reverse, flipped and/or mirrored plans occur throughout the development, please see architectural plans if this is material to your decision to purchase. Renderings and images provided are an artist's conception and are intended only as a general reference and are not to be relied upon. E&O.E. Sales and Marketing provided by Fifth Avenue Real Estate Marketing Ltd. www.fifthave.ca and DFH Real Estate Ltd. www.dfh.ca



REUNION

BELMONT

Plan B

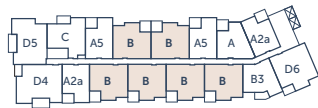
2 Bedroom, 2 Bath

Interior: 910 sq.ft.

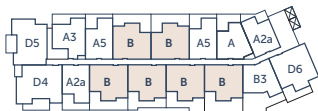
Outdoor: 92-412 sq.ft.

Units:

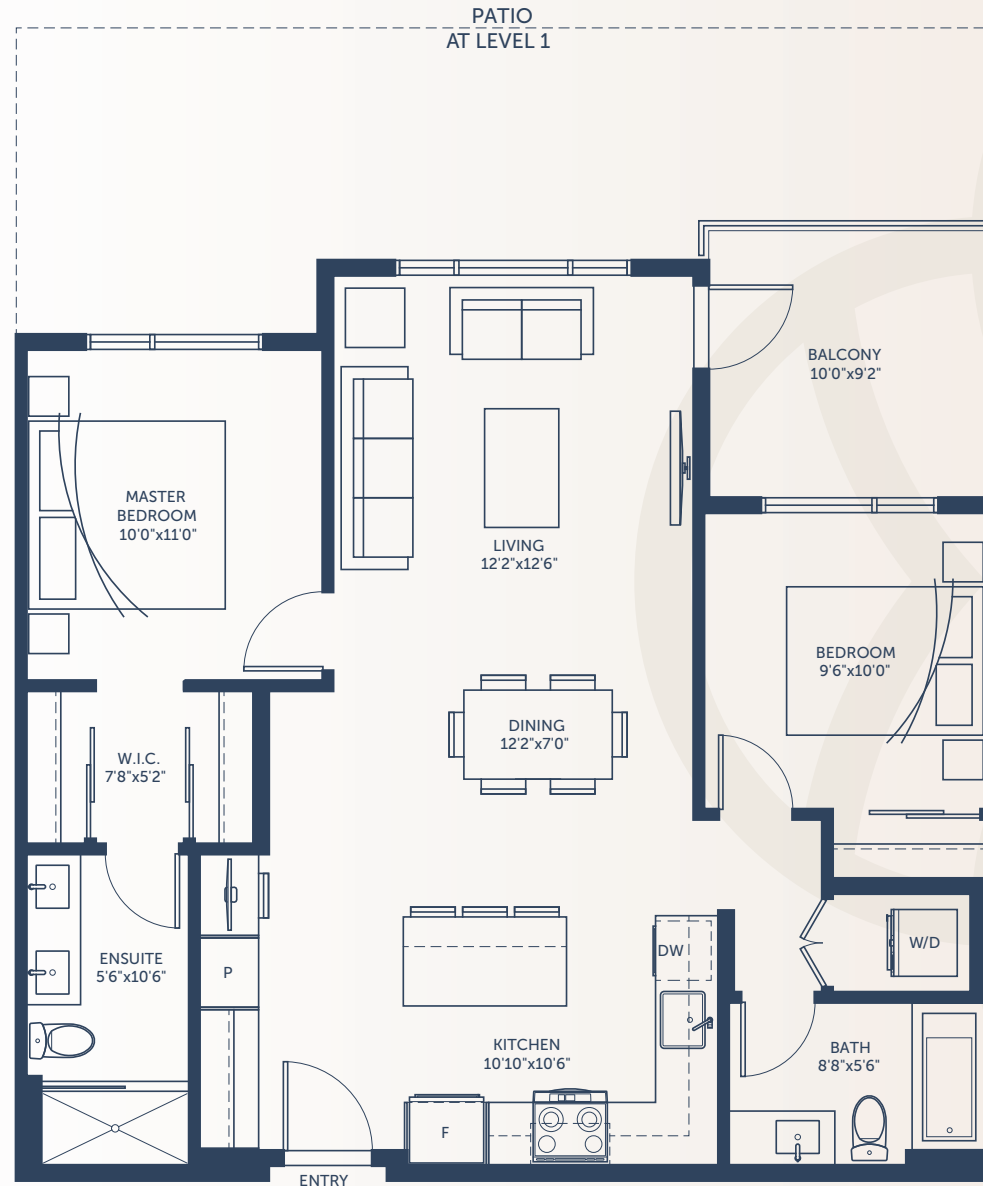
#138, #136, #131, #127, #125, #123,
#238, #236, #231, #227, #225, #223,
#338, #336, #331, #327, #325, #323,
#438, #436, #431, #427, #425, #423,
#538 (PH), #536 (PH), #531 (PH), #527 (PH), #525 (PH), #523 (PH)



BLDG 4 | LEVELS 2-5



BLDG 4 | LEVEL 1



LED COR PROPERTY INVESTMENTS

In our continuing effort to improve and maintain the high standard of the Reunion at Belmont development, the developer reserves the right to modify or change plans, specifications, features and prices without notice. Materials and equipment (including appliances) may be substituted with equivalent or better at the developer's sole discretion. All dimensions and sizes are approximate and are based on preliminary architectural measurements. As reverse, flipped and/or mirrored plans occur throughout the development, please see architectural plans if this is material to your decision to purchase. Renderings and images provided are an artist's conception and are intended only as a general reference and are not to be relied upon. E&O.E. Sales and Marketing provided by Fifth Avenue Real Estate Marketing Ltd. www.fifthave.ca and DFH Real Estate Ltd. www.dfh.ca



REUNION

#111
BELMONT

Plan B3

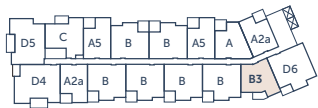
2 Bedroom, 1 Bath

Interior: 770 sq.ft.

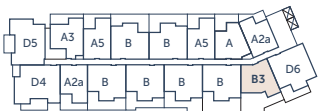
Outdoor: 73-469 sq.ft.

Units:

#123, #223, #323, #423, #523



BLDG 4 | LEVELS 2-5



BLDG 4 | LEVEL 1



LEDCOR PROPERTY INVESTMENTS

In our continuing effort to improve and maintain the high standard of the Reunion at Belmont development, the developer reserves the right to modify or change plans, specifications, features and prices without notice. Materials and equipment (including appliances) may be substituted with equivalent or better at the developer's sole discretion. All dimensions and sizes are approximate and are based on preliminary architectural measurements. As reverse, flipped and/or mirrored plans occur throughout the development, please see architectural plans if this is material to your decision to purchase. Renderings and images provided are an artist's conception and are intended only as a general reference and are not to be relied upon. E&O.E. Sales and Marketing provided by Fifth Avenue Real Estate Marketing Ltd. www.fifthave.ca and DFH Real Estate Ltd. www.dfh.ca



REUNION

#111
BELMONT

Plan C

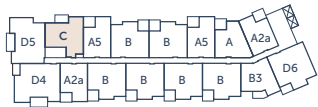
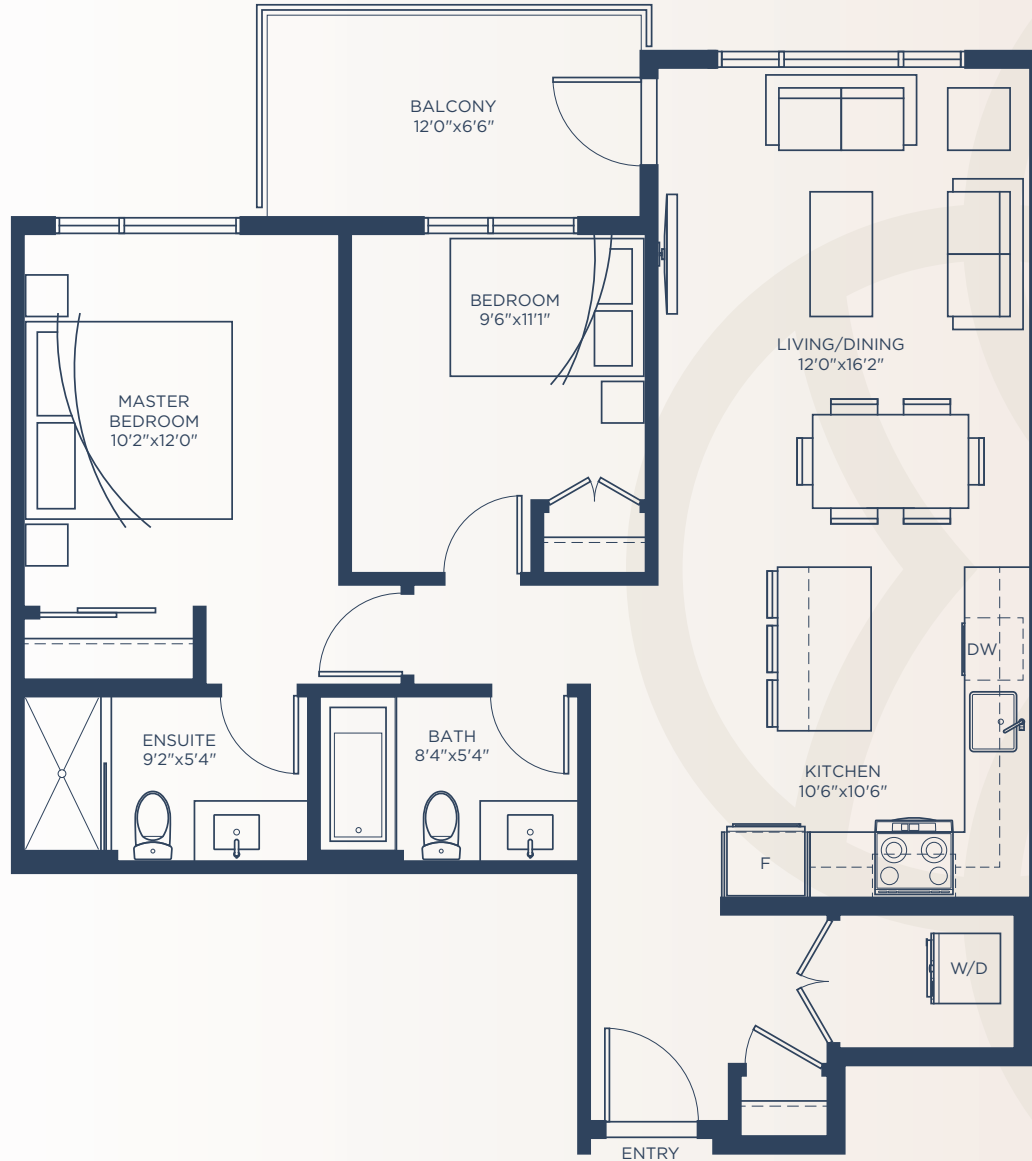
2 Bedroom, 2 Bath

Interior: 870 sq.ft.

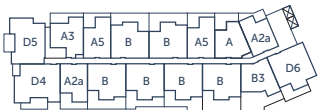
Outdoor: 78-213 sq.ft.

Units:

#242, #342, #442, #542 (PH)



BLDG 4 | LEVELS 2-5



BLDG 4 | LEVEL 1

LED COR PROPERTY INVESTMENTS

In our continuing effort to improve and maintain the high standard of the Reunion at Belmont development, the developer reserves the right to modify or change plans, specifications, features and prices without notice. Materials and equipment (including appliances) may be substituted with equivalent or better at the developer's sole discretion. All dimensions and sizes are approximate and are based on preliminary architectural measurements. As reverse, flipped and/or mirrored plans occur throughout the development, please see architectural plans if this is material to your decision to purchase. Renderings and images provided are an artist's conception and are intended only as a general reference and are not to be relied upon. E&O.E. Sales and Marketing provided by Fifth Avenue Real Estate Marketing Ltd. www.fifthave.ca and DFH Real Estate Ltd. www.dfh.ca



REUNION

#144
BELMONT

Plan D5

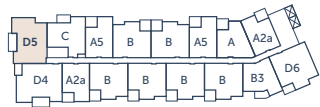
2 Bedroom + Flex,
2 Bath

Interior: 1,068 sq.ft.

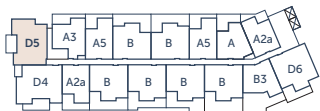
Outdoor: 109-150 sq.ft.

Units:

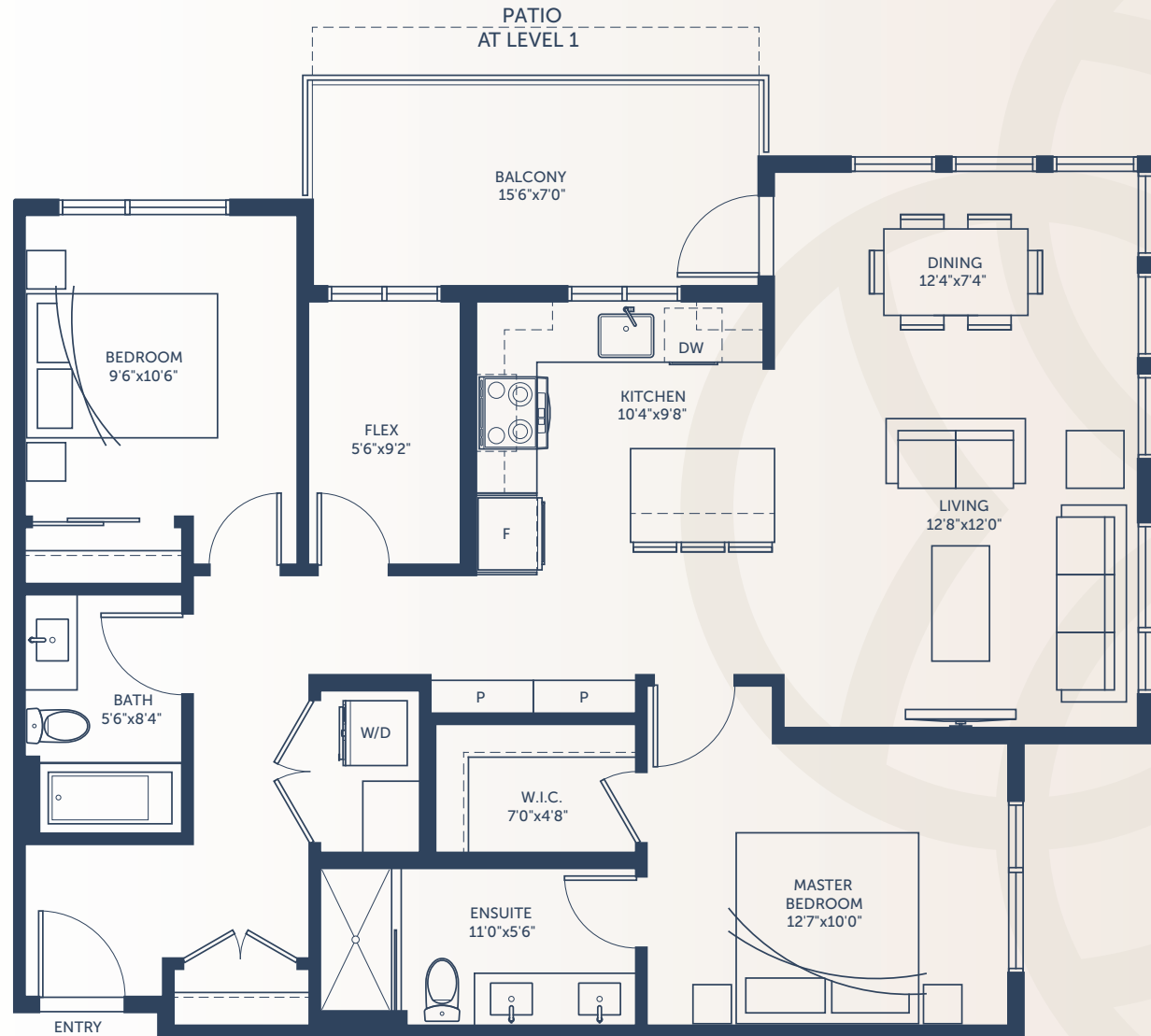
#144, #244, #344, #444, #544 (PH)



BLDG 4 | LEVELS 2-5



BLDG 4 | LEVEL 1



LEDCOR PROPERTY INVESTMENTS

In our continuing effort to improve and maintain the high standard of the Reunion at Belmont development, the developer reserves the right to modify or change plans, specifications, features and prices without notice. Materials and equipment (including appliances) may be substituted with equivalent or better at the developer's sole discretion. All dimensions and sizes are approximate and are based on preliminary architectural measurements. As reverse, flipped and/or mirrored plans occur throughout the development, please see architectural plans if this is material to your decision to purchase. Renderings and images provided are an artist's conception and are intended only as a general reference and are not to be relied upon. E&O.E. Sales and Marketing provided by Fifth Avenue Real Estate Marketing Ltd. www.fifthave.ca and DFH Real Estate Ltd. www.dfh.ca



REUNION
#110
BELMONT

Plan D4

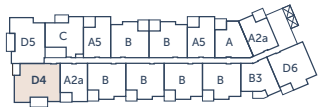
2 Bedroom + Flex,
2 Bath

Interior: 1,195 sq.ft.

Outdoor: 120-259 sq.ft.

Units:

#135, #235, #335, #435, #535 (PH)



BLDG 4 | LEVELS 2-5



BLDG 4 | LEVEL 1



LED COR PROPERTY INVESTMENTS

In our continuing effort to improve and maintain the high standard of the Reunion at Belmont development, the developer reserves the right to modify or change plans, specifications, features and prices without notice. Materials and equipment (including appliances) may be substituted with equivalent or better at the developer's sole discretion. All dimensions and sizes are approximate and are based on preliminary architectural measurements. As reverse, flipped and/or mirrored plans occur throughout the development, please see architectural plans if this is material to your decision to purchase. Renderings and images provided are an artist's conception and are intended only as a general reference and are not to be relied upon. E&O.E. Sales and Marketing provided by Fifth Avenue Real Estate Marketing Ltd. www.fifthave.ca and DFH Real Estate Ltd. www.dfh.ca



REUNION

#100
BELMONT

Plan D6/D6a

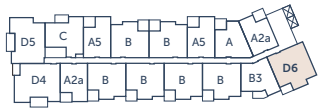
2 Bedroom + Flex,
2 Bath

Interior: 1,061 sq.ft.

Outdoor: 87-209 sq.ft.

Units:

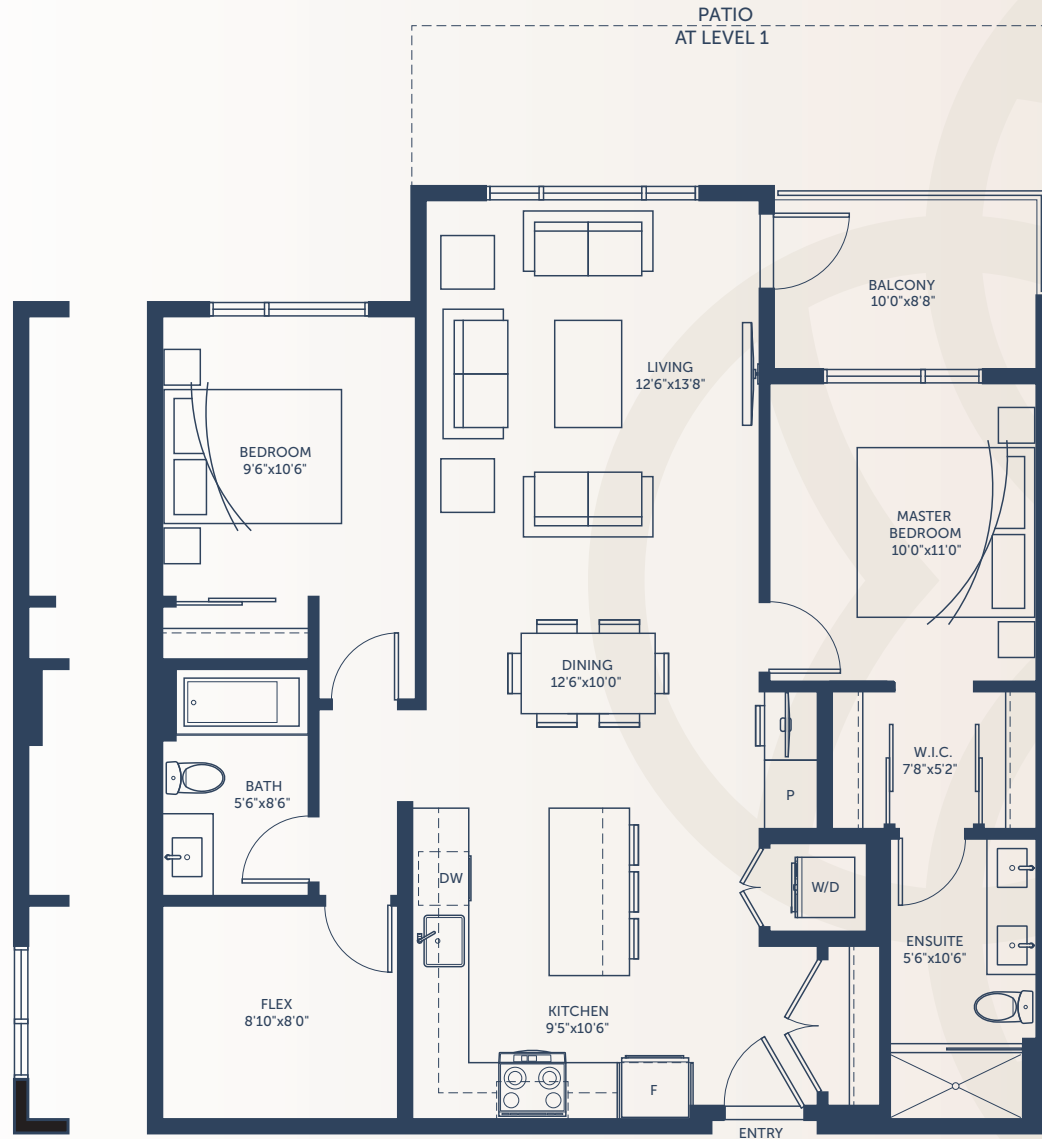
#121, #221, #321, #421, #521 (PH)



BLDG 4 | LEVELS 2-5



BLDG 4 | LEVEL 1



UNIT D6a
@ Levels 4 & 5

LED COR PROPERTY INVESTMENTS

In our continuing effort to improve and maintain the high standard of the Reunion at Belmont development, the developer reserves the right to modify or change plans, specifications, features and prices without notice. Materials and equipment (including appliances) may be substituted with equivalent or better at the developer's sole discretion. All dimensions and sizes are approximate and are based on preliminary architectural measurements. As reverse, flipped and/or mirrored plans occur throughout the development, please see architectural plans if this is material to your decision to purchase. Renderings and images provided are an artist's conception and are intended only as a general reference and are not to be relied upon. E&O.E. Sales and Marketing provided by Fifth Avenue Real Estate Marketing Ltd. www.fifthave.ca and DFH Real Estate Ltd. www.dfh.ca