

CONDO LIVING, BIG HOME FEELING.



 **PACIFIC
TRILOGY**

TRILOGY THREE
BUYER'S GUIDE



CONDO LIVING, BIG HOME FEELING

Phase Three Move-In Ready Early 2023.

Welcome to Pacific Trilogy, an innovative tri-phase condominium development featuring the ultimate in comfort and lifestyle options.

Pacific Trilogy features 3 contemporary six-story buildings nestled in an established Westshore neighbourhood, just steps from Goldstream Village in the heart of Langford.



 **PACIFIC
TRILOGY**

Thoughtful Living.

Spacious and bright

All Pacific Trilogy homes are spacious and bright, with 2 bedroom or 2 bedroom plus den layouts. Expansive 9' ceilings (10' on top-floor units), oversized windows and glass railings invite the outdoors in, bathing your suite in natural light. Some homes even enjoy majestic mountain views.

All the Comforts of home

Cooking will be a pleasure, and storage a breeze in your new kitchen with stylish European-inspired cabinetry. All homes have the added convenience of in-suite laundry.

Peace and quiet

You can enjoy the blissful serenity of your new home without having to worry about noise from your neighbours. An acoustic 'quiet zone' sound barrier on every floor plus a double layer of 5/8" drywall provide the very best in soundproofing and noise reduction, along with 6" 'quiet zone' acoustic insulation and res-bar ceilings that reduce noise transfer along joists.

Environmentally friendly

And... you can rest assured that Pacific Trilogy has incorporated environmentally-friendly features including high-efficiency Energy Star rated appliance and parking stalls wired for EV charging stations.



The Developer



The award-winning Viking Properties is made up of two families: the Skadbergs and the Gulbrandsens, with familial ties that date back generations. This strong bond is the foundation of their company's success over the past 40 years. The name Viking Properties merges the Norwegian Viking law with a "Hygge" value. Viking Properties pays homage to their ancestral roots, valuing where they came from, without losing sight of the journey they are embarking on.

The story begins in 1982, when Harald made the trek from Norway to Victoria, BC to seek out new opportunities. For the first 5 years, Harald and his Father built homes in Victoria together. In 1987, Harald joined Jon under the partnership "Scan Homes" in Victoria.

In 2003, they founded Pacific Coast Land Company (now Viking Properties). With two strong forces coming together, they have crafted many single and multi-family projects over the years. These developments include but are not limited to: Pacific on Veterans (2003), Pacific Central (2015), Pacific Circle (2017), and Thetis Lakeside (2019). In 2021, Harald is excited to step back and mentor Ben, as the business continues to grow and builds on the excellence of the past 40 years!

viking-properties.com

Sales Team | Call us at (250) 900-2925

Team leaders Cal and Scott are both MLS® Gold Award winning REALTORS® (2019). Together with their client services manager Lori they're on a mission to deliver innovative services and market information with superior client satisfaction all the while making a meaningful contribution to the communities in which we live and work.



Cal Faber REALTOR®
cal@fabergroup.ca

Scott Faber REALTOR®
scott@fabergroup.ca



FABER
REAL ESTATE GROUP



The Features

Each home at Pacific Trilogy is thoughtfully designed with your comfort in mind. In each of our well-appointed homes, you'll find the features and details as well as the latest in technology to complement the generous room sizes. It's condo living with a big home feeling at its finest.

Features

- European-inspired cabinetry
- Glass balcony railings
- In-suite laundry
- Durable vinyl flooring
- Energy star Samsung appliances
- 9' ceilings (10' on top-floor units)
- Extra-large windows
- Sound barrier between floors
- Double layer of drywall
- 6" 'quiet zone' acoustic insulation
- Quartz countertops
- Soft-close cabinetry
- Glass tile backsplash (6th floor standard)
- A/C Heat Pump
- Covered and uncovered parking
- Bike Storage
- Parking stalls pre-wired for EV charging
- Multi-use recreation centre
- Security system cameras

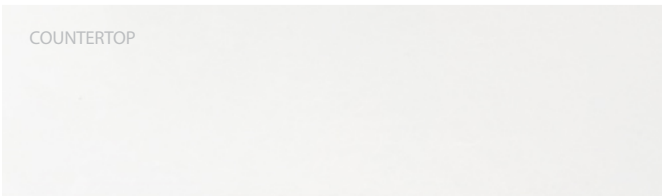
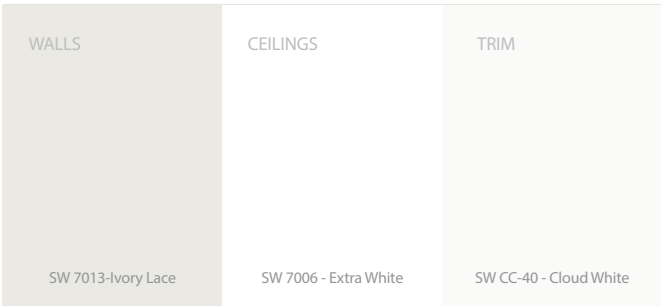
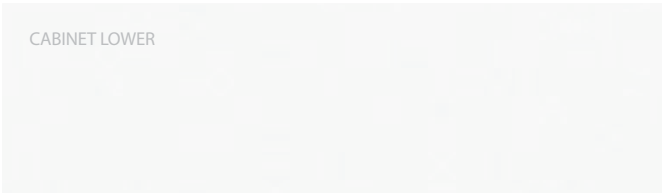
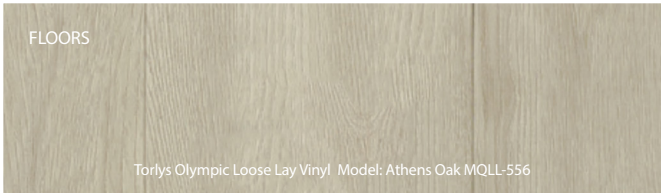


Colour Scheme

Pacific Trilogy II Colour and trim details



* Some details may differ from photos



Appliance Package

Standard Samsung Appliances Package



Samsung 30" Slide-In Range



Samsung 33" French Door Fridge



Samsung 24" Built-In Dishwasher



Samsung 30" Over the Range Microwave



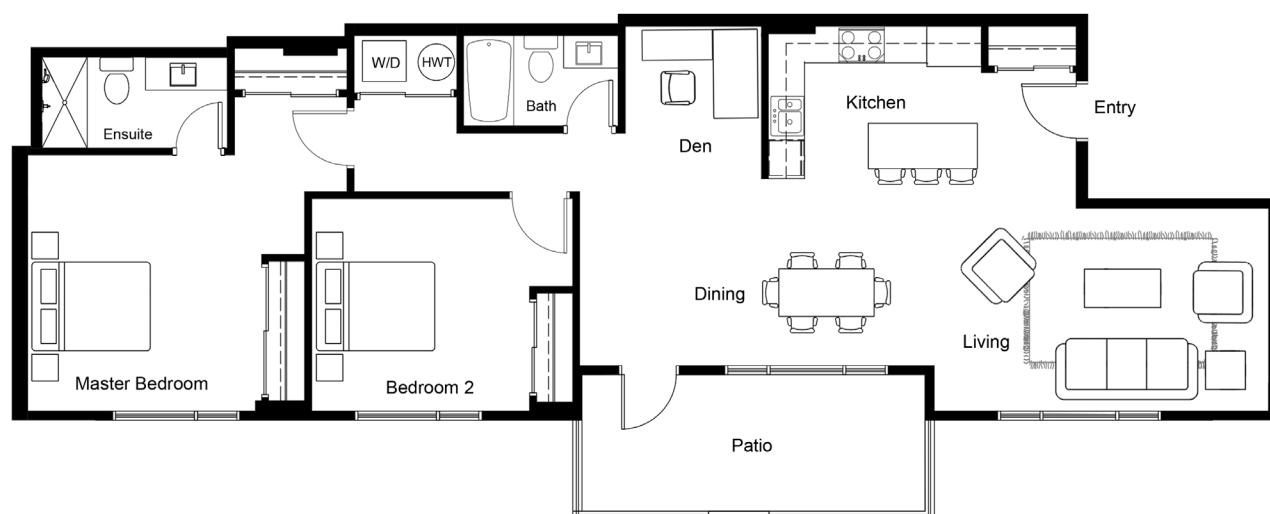
Samsung 27" Front Load Washer White



Samsung 27" Front Load Dryer White

CONDO LIVING, BIG HOME FEELING

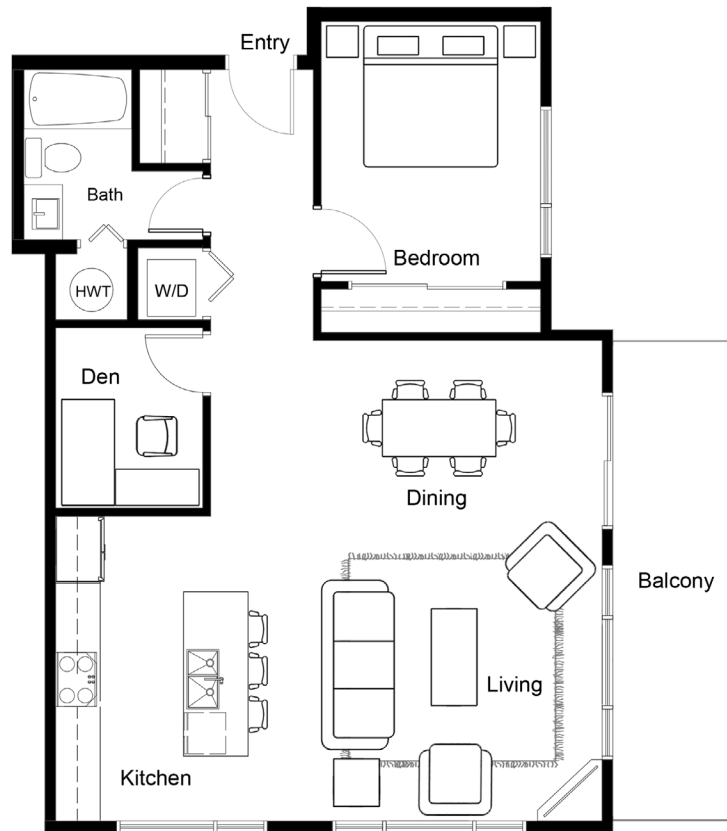
PACIFIC
TRILOGY



101

2 Bedroom + Den / Southwest Facing / 992 sq. ft.

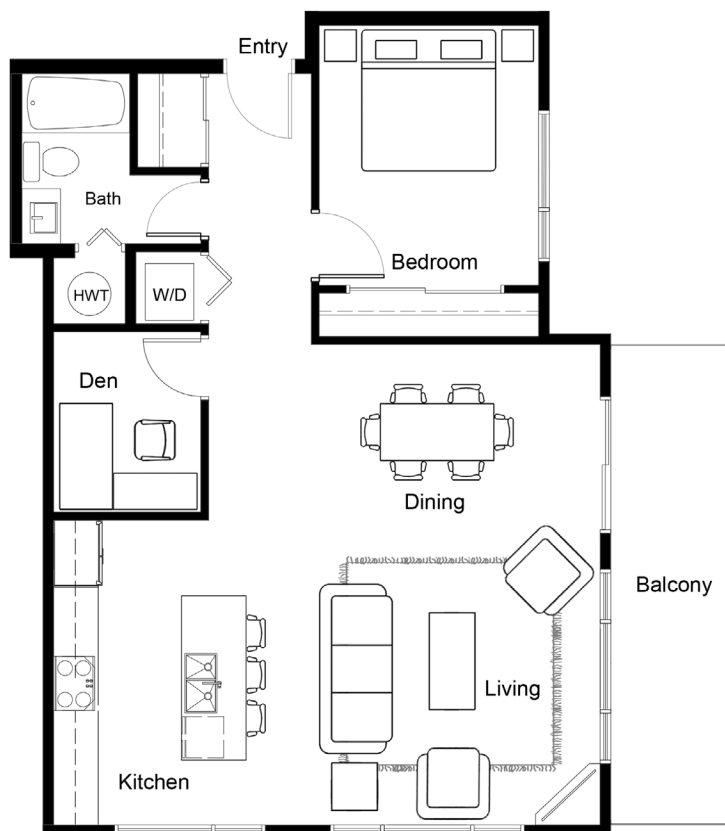




201

1 Bedroom + Den / Southeast Facing / 936 sq ft.





301

1 Bedroom + Den / Southeast Facing / 936 sq ft.

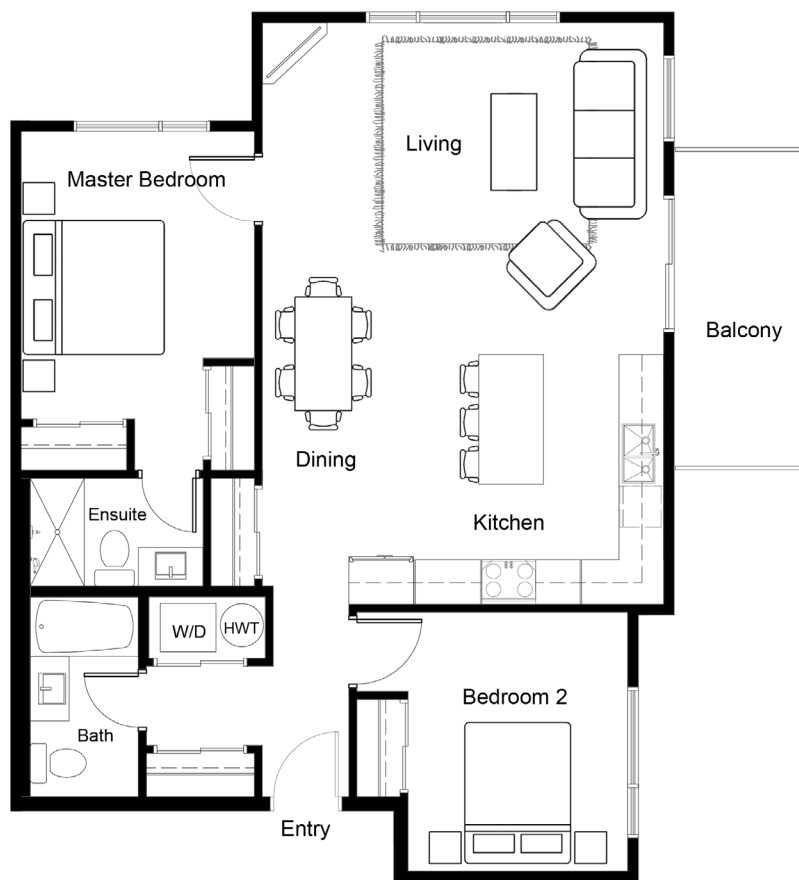




401, 501, 601

2 Bedroom + Den / Southeast Facing / 1341 sq. ft.

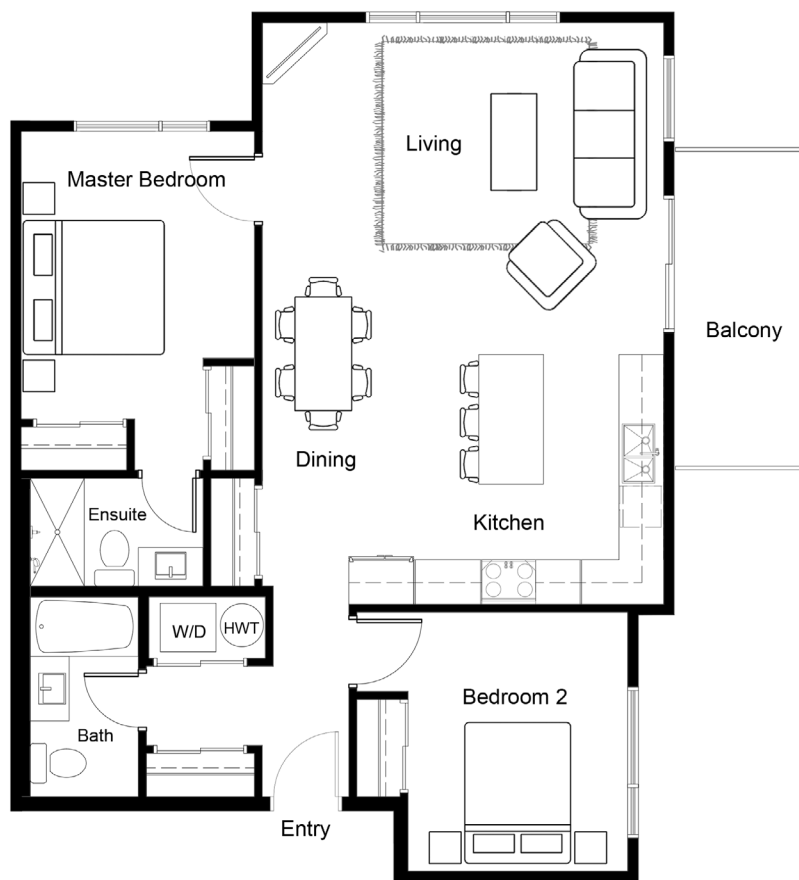




202

2 Bedroom / Northeast Facing / 1056 sq ft.

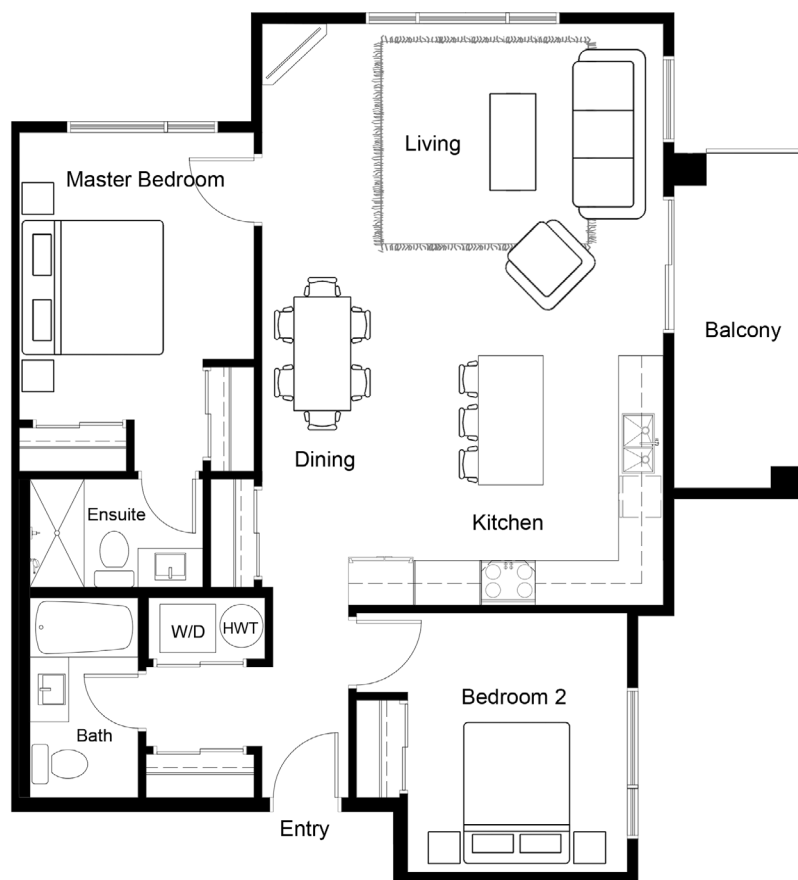




302

2 Bedroom / Northeast Facing / 1056 sq ft.

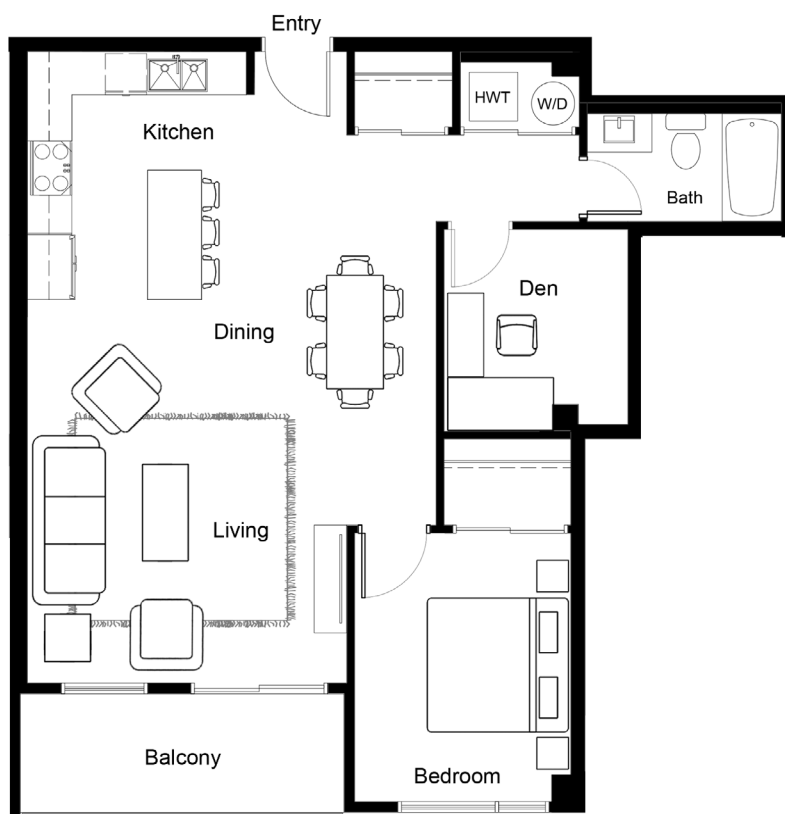




402, 502, 602

2 Bedroom / Northeast Facing / 1056 sq ft.

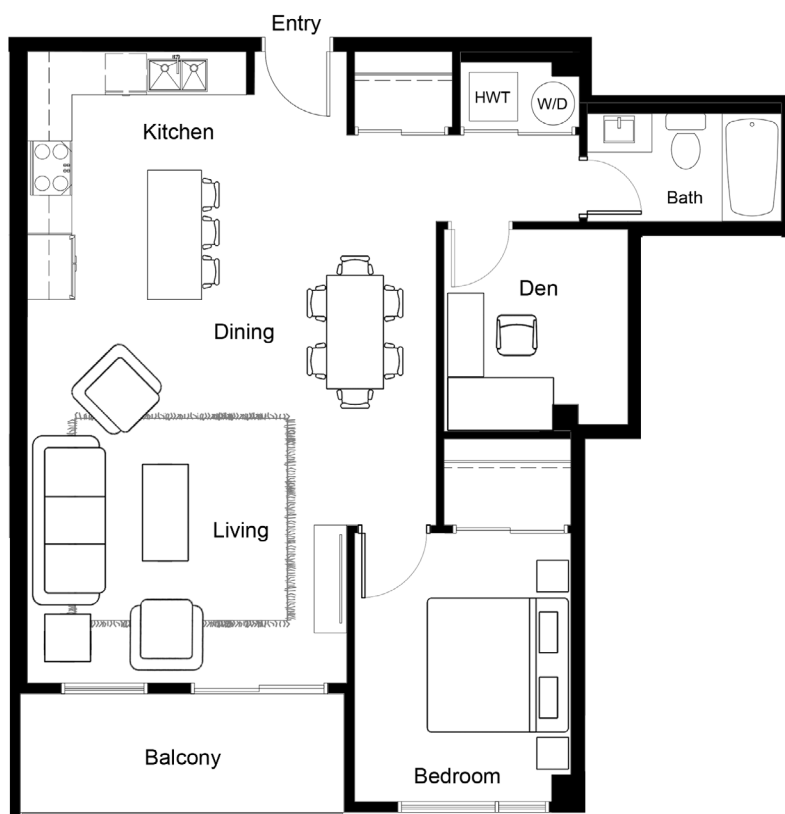




203

1 Bedroom + Den / Southwest Facing / 925 sq ft.

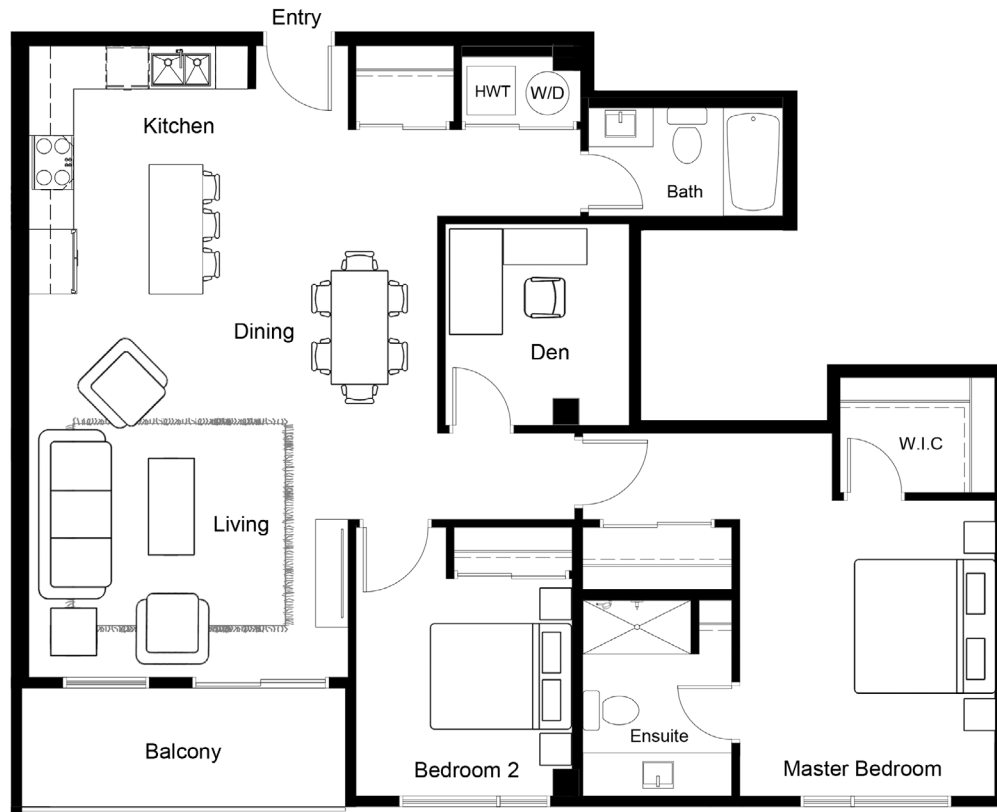




303

1 Bedroom + Den / Southwest Facing / 925 sq ft.

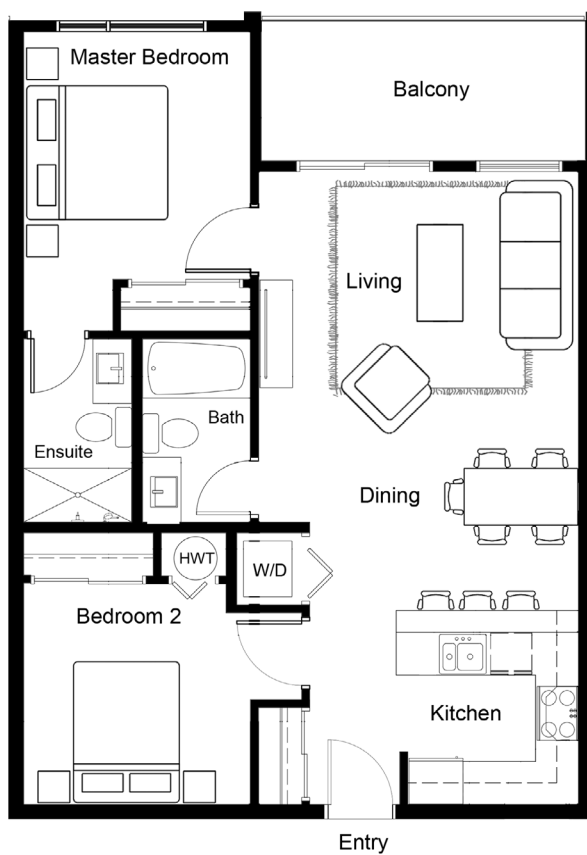




403, 503, 603

2 Bedroom + Den / Southwest Facing / 1319 sq ft.

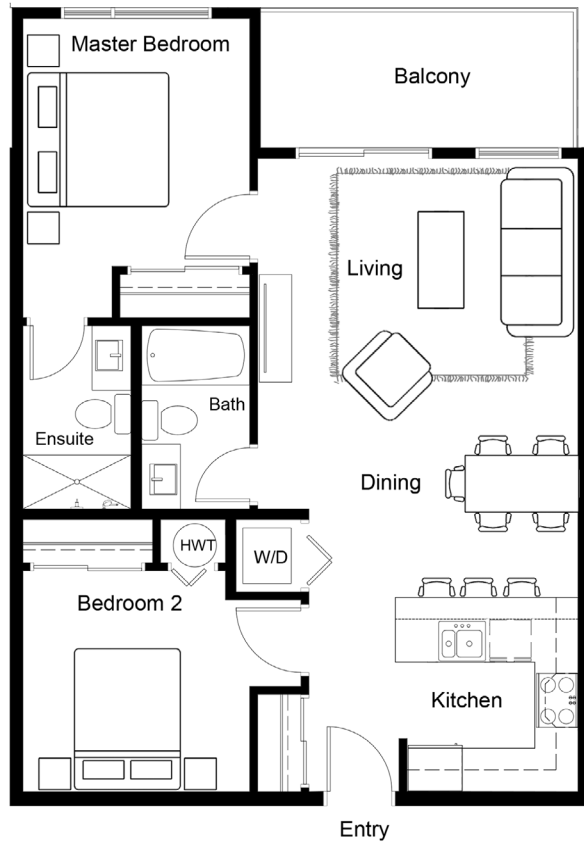




304

2 Bedroom / Northeast Facing / 876 sq ft.

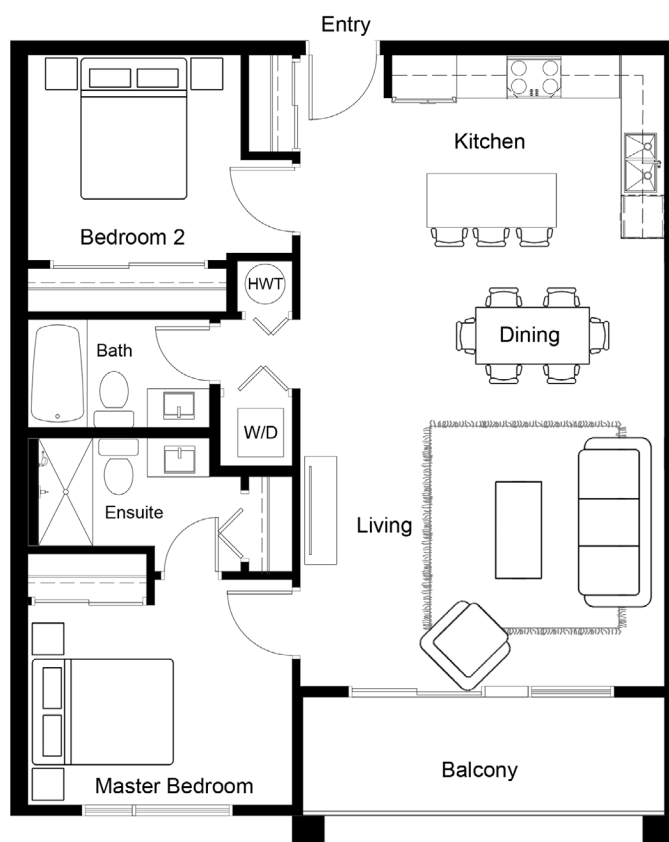




404, 504, 604

2 Bedroom / Northeast Facing / 876 sq ft.

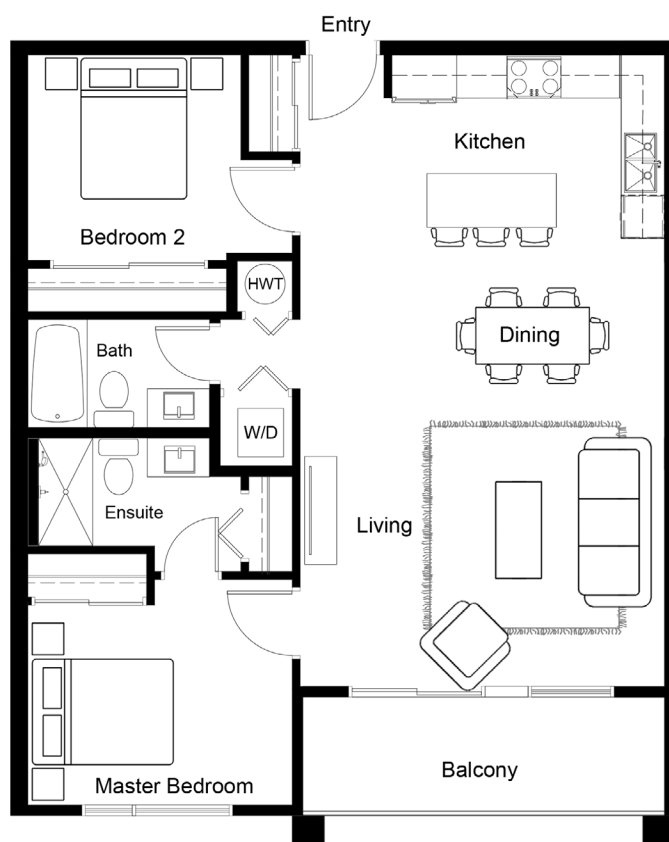




205

2 Bedroom / Southwest Facing / 999 sq ft.

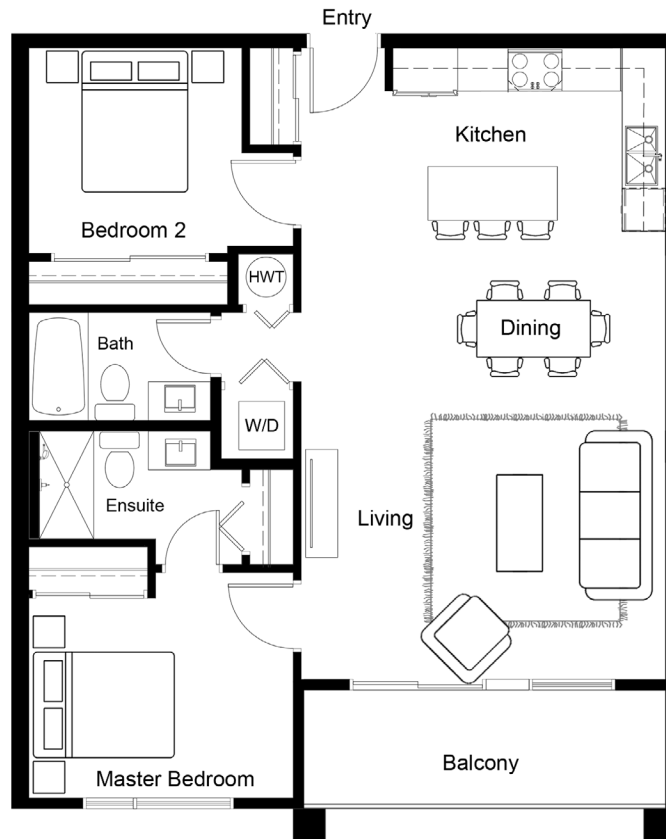




305

2 Bedroom / Southwest Facing / 999 sq ft.

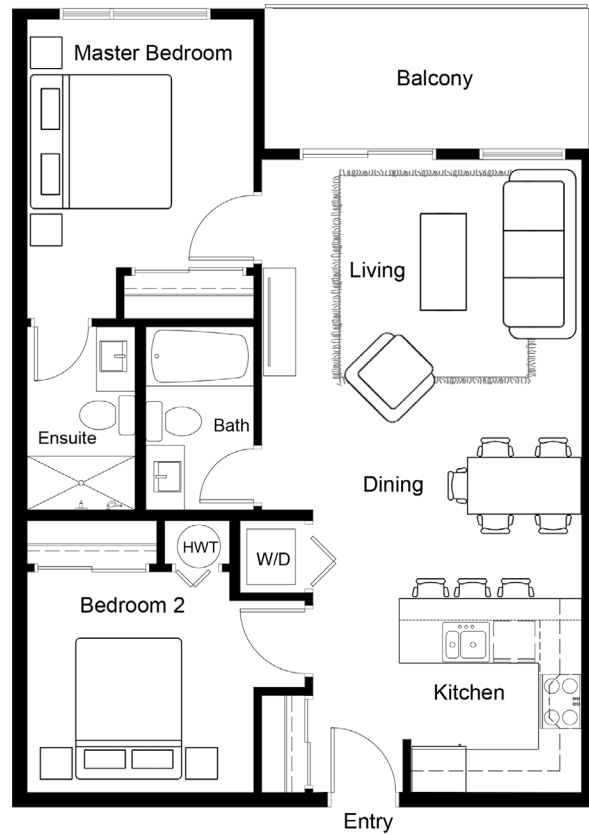




405, 505, 605

2 Bedroom / Southwest Facing / 999 sq ft.

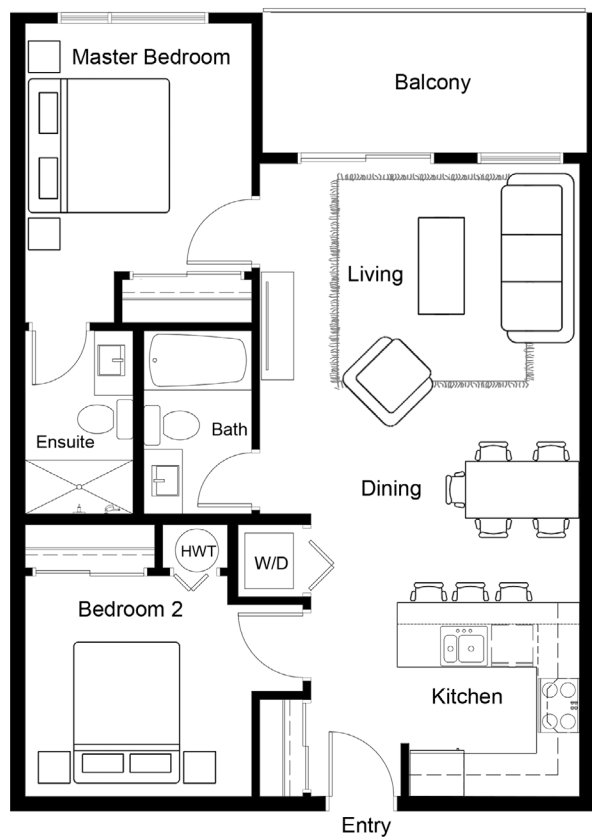




206

2 Bedroom / Northeast Facing / 876 sq ft.

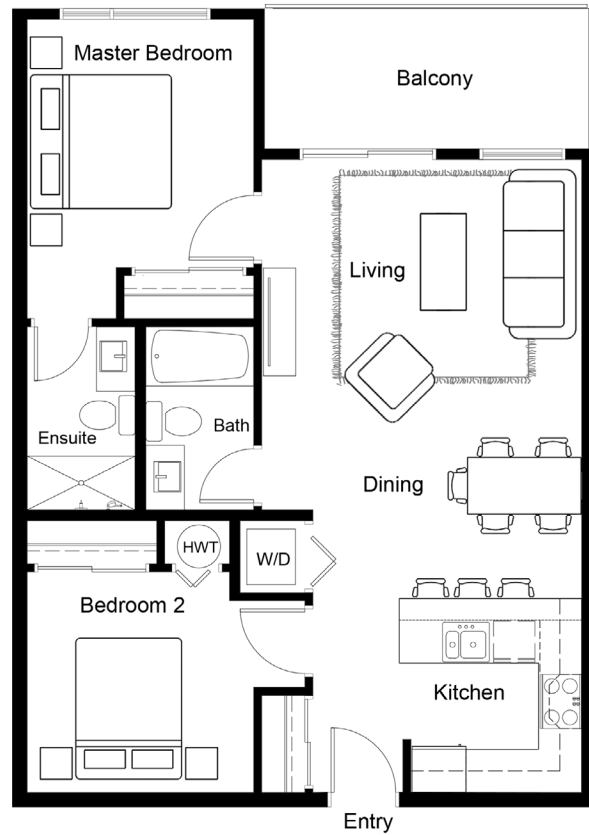




306

2 Bedroom / Northeast Facing / 876 sq ft.

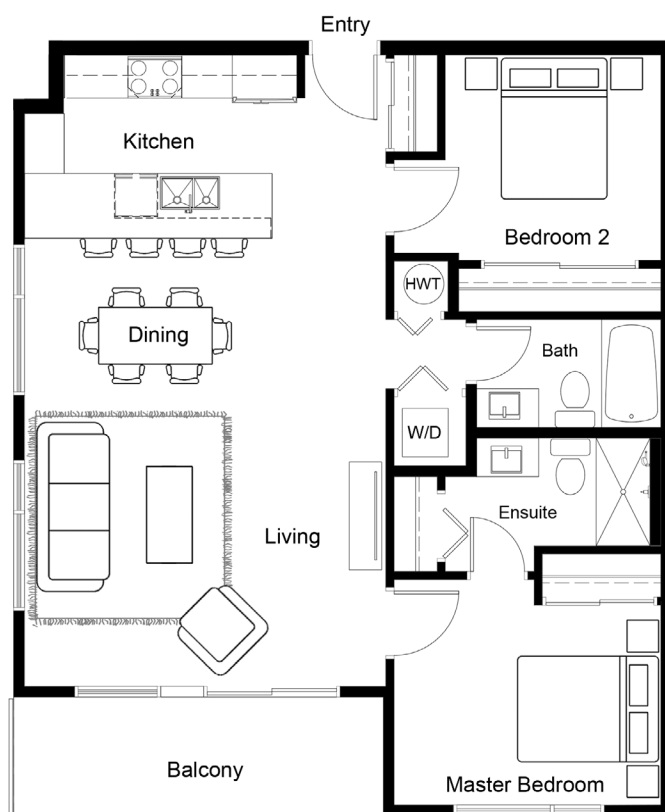




406, 506, 606

2 Bedroom / Northeast Facing / 876 sq ft.

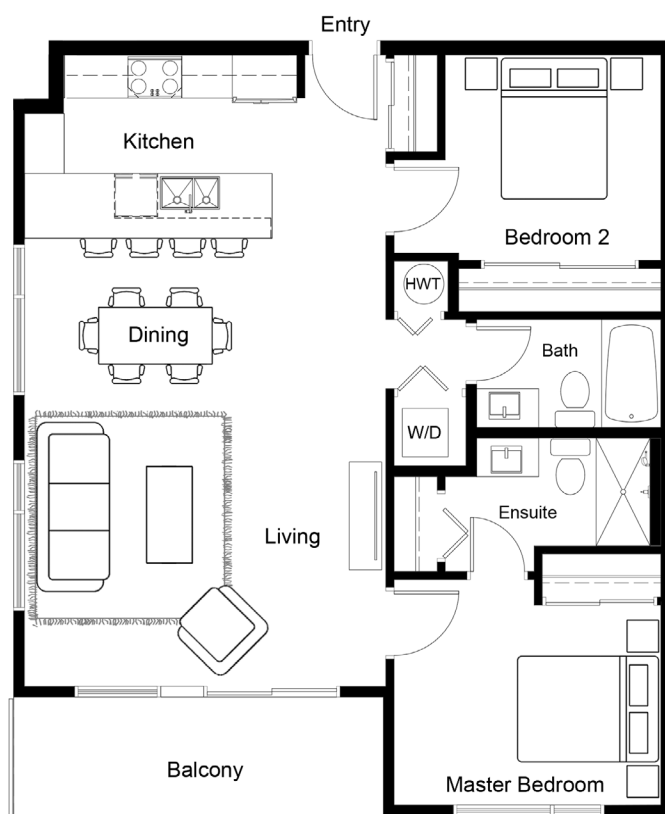




207

2 Bedroom / Northeast Facing / 999 sq ft.

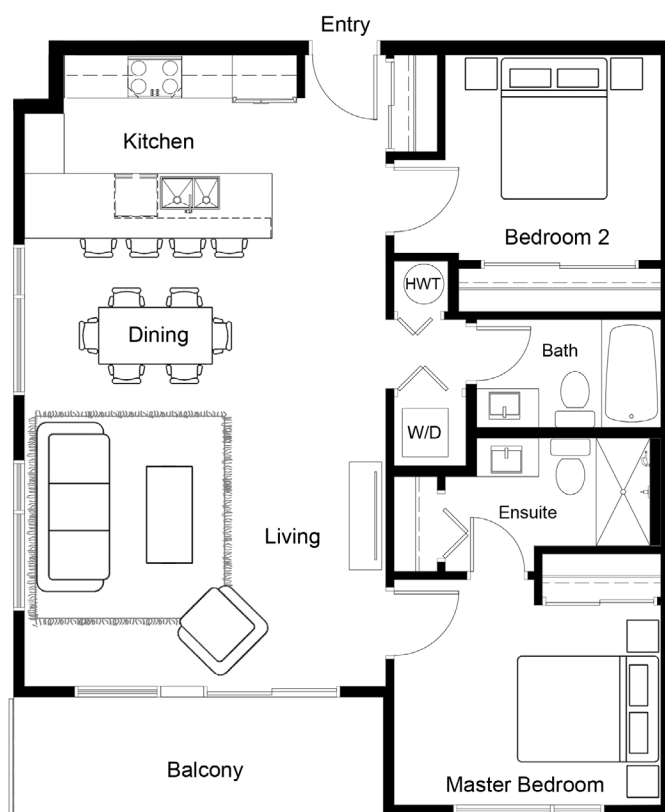




307

2 Bedroom / Northeast Facing / 999 sq ft.

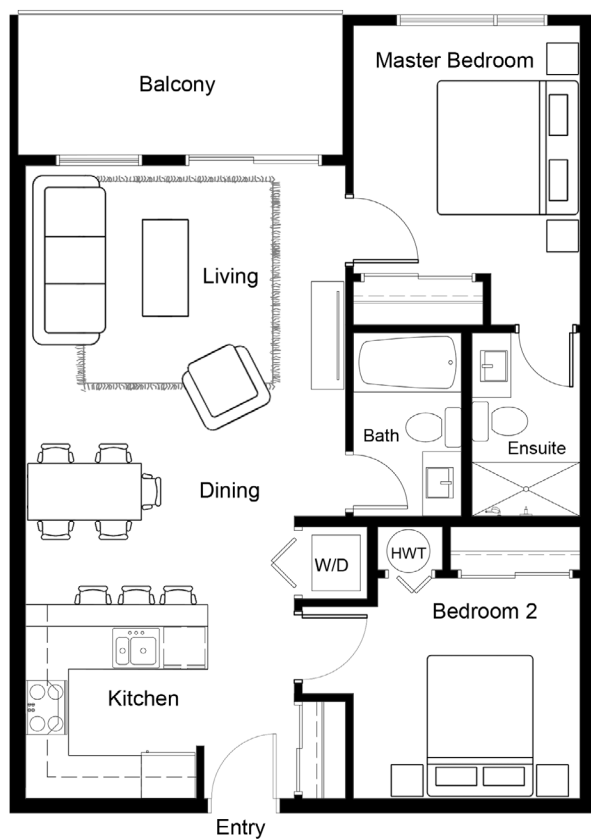




407, 507, 607

2 Bedroom / Northeast Facing / 999 sq ft.

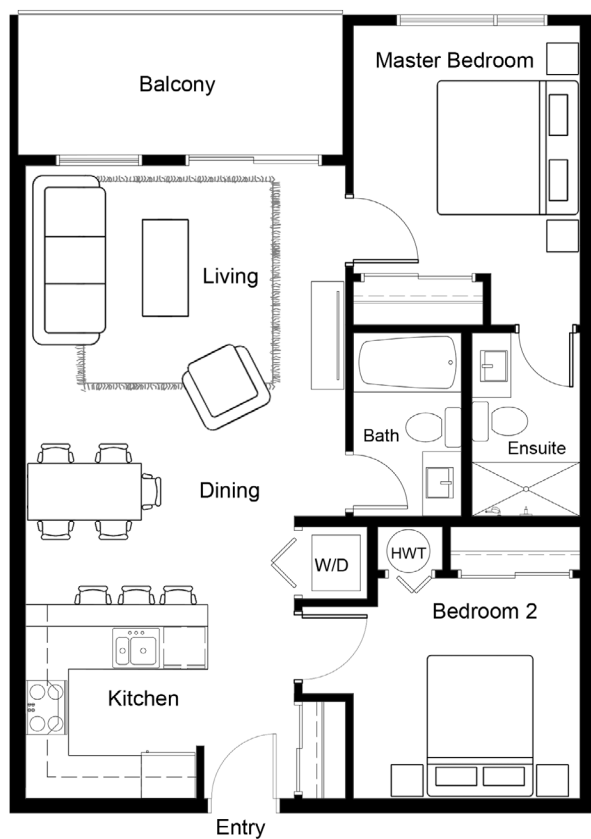




208

2 Bedroom / Northeast Facing / 876 sq ft.

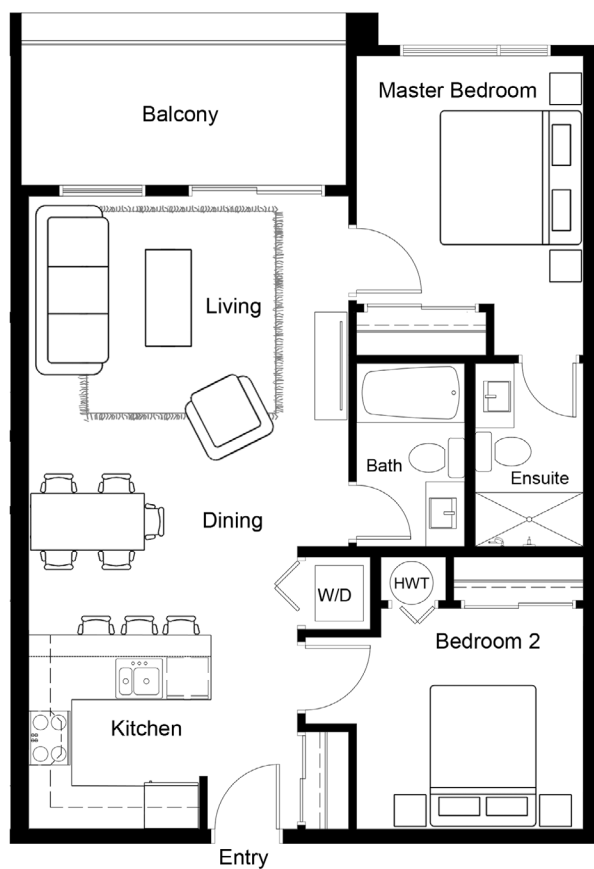




308

2 Bedroom / Northeast Facing / 876 sq ft.

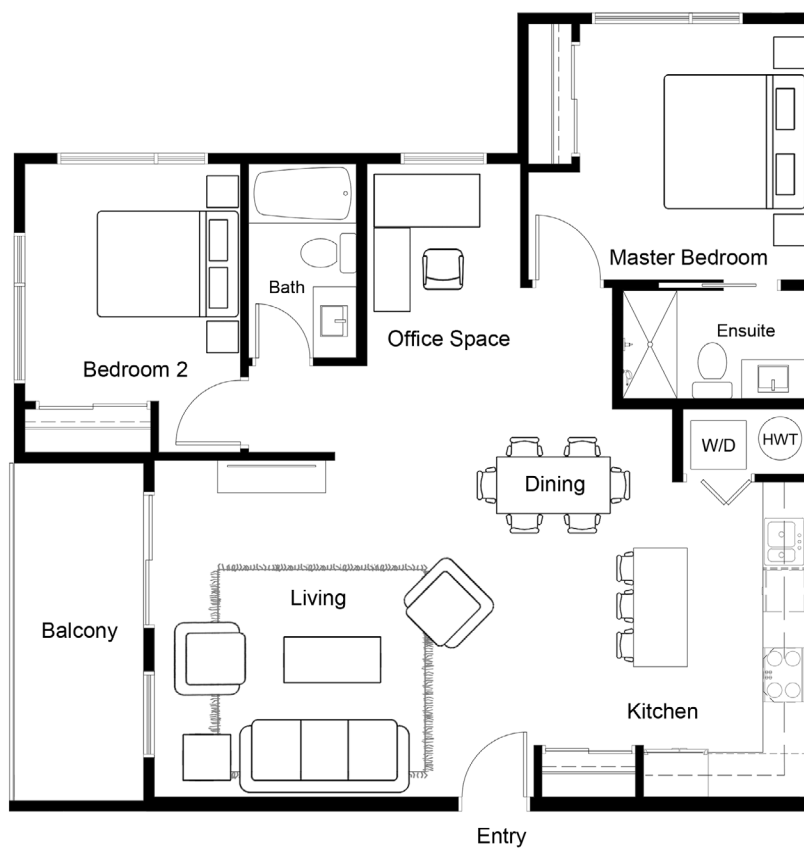




408, 508, 608

2 Bedroom / Northeast Facing / 876 sq ft.

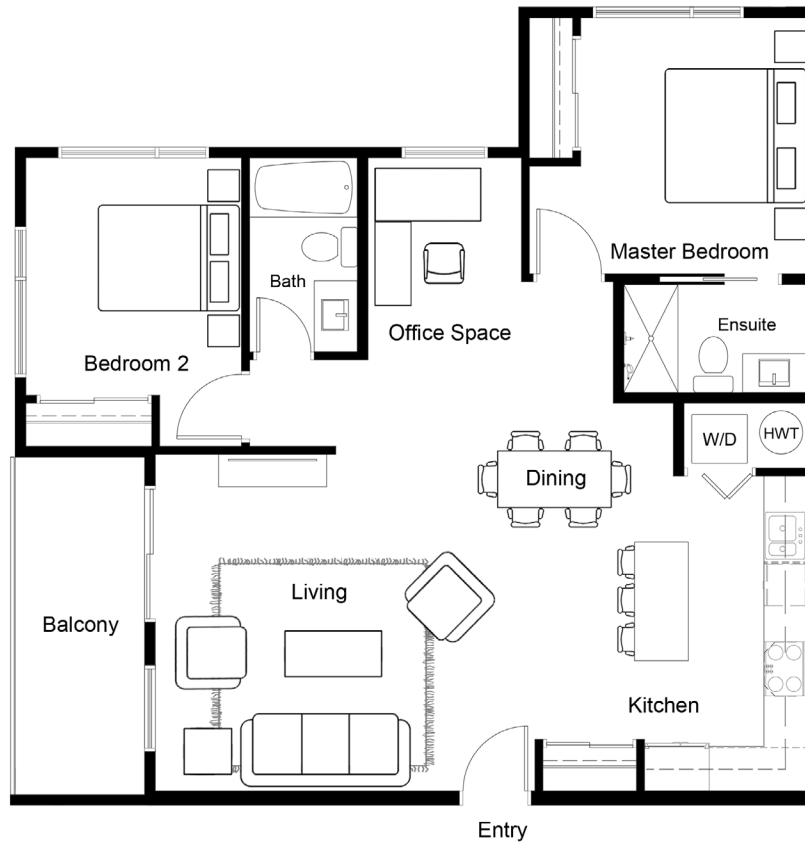




210

2 Bedroom + Office Space / Northwest Facing / 1116 sq ft.

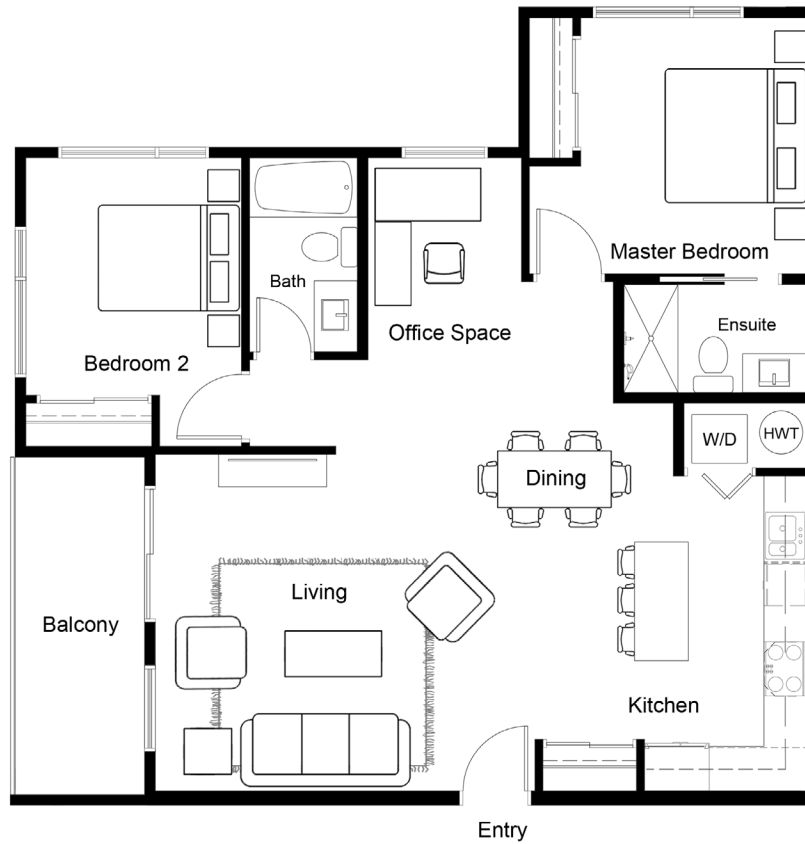




310

2 Bedroom + Office Space / Northwest Facing / 1116 sq ft.





410, 510, 610

2 Bedroom + Office Space / Northwest Facing / 1116 sq ft.

