

The background of the top half of the image is a photograph of a beach at dusk or dawn. The sky is a deep blue with some light clouds. The beach is covered in dark pebbles and some green grass is visible in the foreground. The word "MO SAIC" is written in large, white, sans-serif capital letters across the middle of the image. The letter 'O' is replaced by a white circle containing a black grid pattern, resembling a mosaic tile.

MO SAIC


DISCOVER LIFE SEASIDE
CARBON-FREE HOMES™ IN PARKSVILLE, BC

Welcome to Mosaic, your Carbon-free Home™ in Parksville, BC.

Starting in the mid-\$300's and with your choice of 1, 2, and 3 bedroom suites, Mosaic is located only 0.5km from the beach. Gorgeous quartz countertops, soft close cabinetry, stainless steel appliances, and other finishes will be the cherry on top of your Quality Inside™ home.

Mosaic will officially mark Highstreet's ninth project on the Island. Find the perfect balance of adventure and relaxation in Parksville. Whether you want to experience beaches, parks, golf courses, hiking, biking or many more activities for you and the entire family, Mosaic is the location for you.





"I felt at home from the day I stepped into the show suites. Such a warm, welcoming feeling and to make the experience even better, the sales representatives ensured quality customer service! They were extremely detailed which I appreciated as a first-time home buyer."

- ADAM A, PREVIOUS HIGHSTREET HOME BUYER



MOSAIC

MOSAIC LIVING SPECIFICATIONS

COMMUNITY

- Highest possible BC Energy Step Code
- Four storeys with modern design
- Underground secure parkade
- Option to upgrade first parking stall to include EV charging station
- Additional surface parking
- Garbage and recycling centres
- Secure entry via fobs

BUILDING FEATURES

- Triple pane windows
- 9' ceilings
- LED lamps in all common areas
- LED lighting in the parkades with exterior photocell
- LED lights in all suite light fixtures
- Energy Recovery Ventilation in every suite
- Solar panels that help power common areas
- Leak detection in suite to detect, alert, and shut off water to avoid potential flooding
- Heat pump heating and cooling
- Heat pump hot water with centralized system
- Security cameras
- Option to upgrade first parking stall to include EV charging station

EXTERIOR FINISHES

- Superior insulating for sound and energy efficiency
- Aluminum railings and glass panels on patios and balconies
- SBS roofing

INTERIOR FINISHES

- "Earth" or "Sky" interior colour scheme
- Large format subway tile backsplashes in kitchen
- Combination of luxury vinyl tile and carpet flooring
- Roller blinds
- Flatstock baseboard and casings
- Quartz countertops in kitchen and bathrooms
- Stainless steel range with ceramic stovetop
- Energy Star washer and dryer
- Stainless steel Energy Star appliances: refrigerator, dishwasher
- Hood fan
- Microwave
- Quartz countertop island with space for seating in kitchen
- Soft close cabinets and full extension drawers
- Undermount stainless steel sink in kitchen
- Modern lighting package
- Undermount ceramic sink in bathroom
- Low flow plumbing fixtures and faucets
- Gypcrete -a lightweight concrete floor topping on all floors
- Chrome/satin door hardware, plumbing fixtures, feature lighting

DOUBLE WARRANTY

- New Home Warranty by Travelers
- 2 year materials and labour
- 4 year electrical and plumbing systems
- 10 year building envelope
- 20 year building structure warranty

DID YOU KNOW?

Mosaic is Highstreet's ninth Vancouver Island project. Mosaic itself is designed to be the highest level of the BC Energy Step Code, a high standard of environmentally-friendly buildings.

With Highstreet, your Carbon-free Home™ will also feature Quality Inside™, which means your home will have efficient, quality systems, inside and out.

To learn more, head to buyhighstreet.ca.

LIVEATMOSAIC.CA

HIGHSTREET

In our continuing effort to improve and maintain high standards, the developer reserves the right to modify or change plans, specifications, features, and prices without notice. Materials may be substituted with equivalent or better at the developer's sole discretion. Renderings are an artist's conception and are intended as a general reference only. Please see the disclosure statement for specific offering details.

ALL ABOUT YOUR

CARBON-FREE HOME™

Mosaic is a better home for the planet.

Residential homes are major emitters of carbon globally. For Canadian homes, most of the carbon emissions come from heating and hot water. Lowering carbon emissions on all fronts means slowing the effects of global warming, which has all sorts of benefits – improved public health, better food security, reducing avoidable natural disasters... we could go on, but it all equates to happier people and a healthier planet.

We minimize energy consumption through better technology, airtightness, and additional insulation, and we don't burn any carbon for heating or hot water, making your home carbon-free. We have minimized the amount of energy required, allowing us to eliminate the need for gas for heating. We use 75% less energy than a Building Code minimum building, and only use clean electricity for all your energy needs.

WHAT IS QUALITY INSIDE™?

Carbon-free homes need more attention to detail.

When you buy a new Highstreet home, you're buying quality.

Quality finishes should mean more than quartz countertops and high-end cabinetry. To Highstreet, Quality Inside™ means everything is engineered to bring you comfort, pride, and no carbon emissions. This includes:

Building envelope: we invest in insulation, windows, and preventing air leaks in the building envelope.

Airtightness and Cleaner Air: airtightness is important in keeping your home comfortable and energy efficient. The exterior walls are sealed with special tape and an exterior airtight layer, using a lot of attention to detail, which means it takes less energy to heat and cool your home and better air quality for health.

Flood Protection: Your new home is equipped with a flood detection system to avoid floods in your building that automatically shuts the water off to your home when it detects a leak.

Water and Energy Savings: low-flow and Energy Star appliances mean potential savings for you!

Less Noise: Your new home will have best-in-class sound attenuation for wood-frame apartments. At a built rating of 60 STC, most sounds will not be heard, and you get to live peacefully in your own home.

LIVE IN STYLE

Your First Sneak Peek

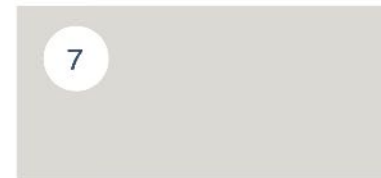
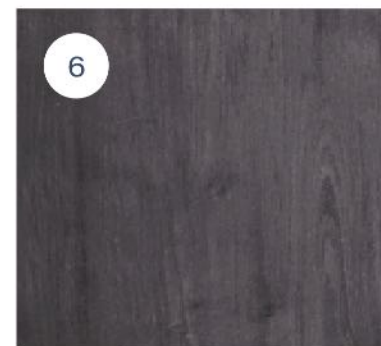
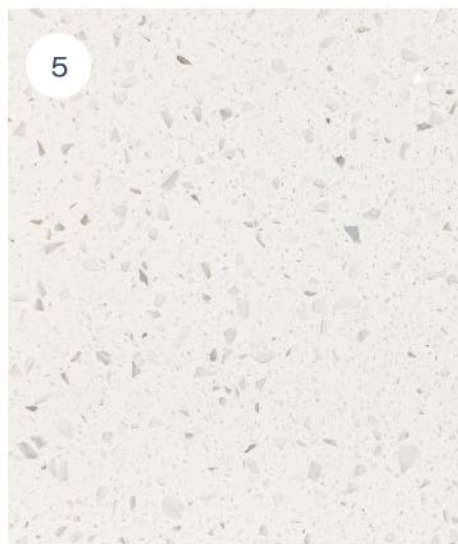
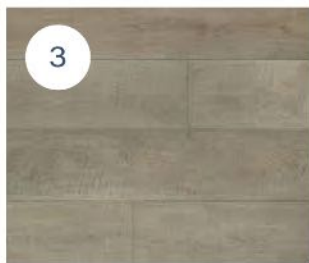
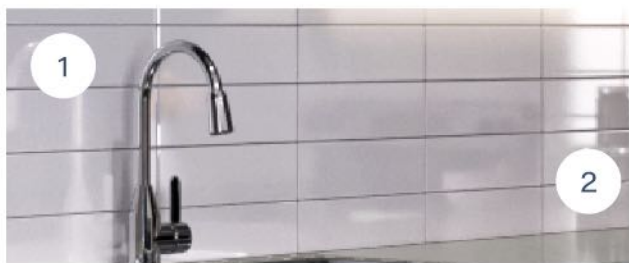


To see the full gallery, visit [LIVEATMOSAIC.CA](https://liveatmosaic.ca)



Illustrations, images, and renderings are for illustrative purposes only and actual product may vary. The developer reserves the right to make changes or substitutions to the building design, specifications, and floor plans without notice should it be necessary. Measurements and square footage are approximate and actual sizes may vary. This is not an offering of sale. Any such offering can only be made after filing a disclosure statement.

ELEGANT AND REFINED Earth Finish



1 Hardware
Chrome/Satin Chrome Door Hardware,
Plumbing Fixtures, and Feature Lighting

2 Backsplash
Pure White Gloss Tile
4" x 12"

3 Flooring
Luxury Vinyl Plank Flooring in Nutshell

4 Carpet
Moon Rock Carpet in Bedrooms
(except main floor)

5 Countertop
Crystal Crescent 2cm Quartz
Countertop

6 Cabinet Doors
Charcoal Chestnut

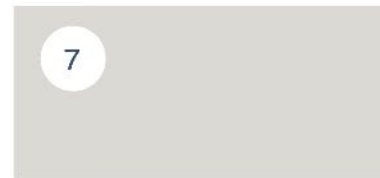
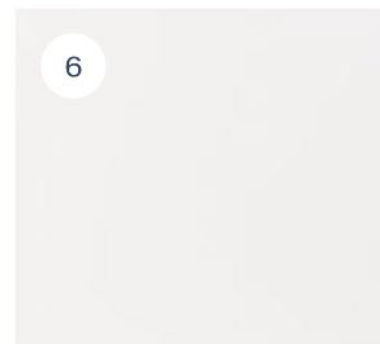
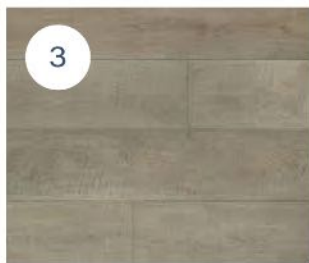
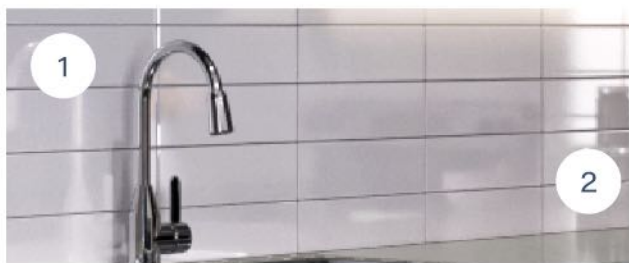
7 Paint
First Star Colour 7646

*Window covering
package included
featuring roller blinds.
Please inquire for more details.

LIVEATMOSAIC.CA
HIGHSTREET

In our continuing effort to improve and maintain high standards, the developer reserves the right to modify or change plans, specifications, features, and prices without notice. Materials may be substituted with equivalent or better at the developer's sole discretion. Renderings are an artist's conception and are intended as a general reference only. Please see the disclosure statement for specific offering details.

SOOTHING AND SERENE Sky Finish



1 Hardware
Chrome/Satin Chrome Door Hardware,
Plumbing Fixtures, and Feature Lighting

2 Backsplash
Pure White Gloss Tile
4" x 12"

3 Flooring
Luxury Vinyl Plank Flooring in Nutshell

4 Carpet
Moon Rock Carpet in Bedrooms
(except main floor)

5 Countertop
White Rock Quartz 2cm Quartz
Countertop

6 Cabinet Doors
Pacific White

7 Paint
First Star Colour 7646

*Window covering
package included
featuring roller blinds.
Please inquire for more details.

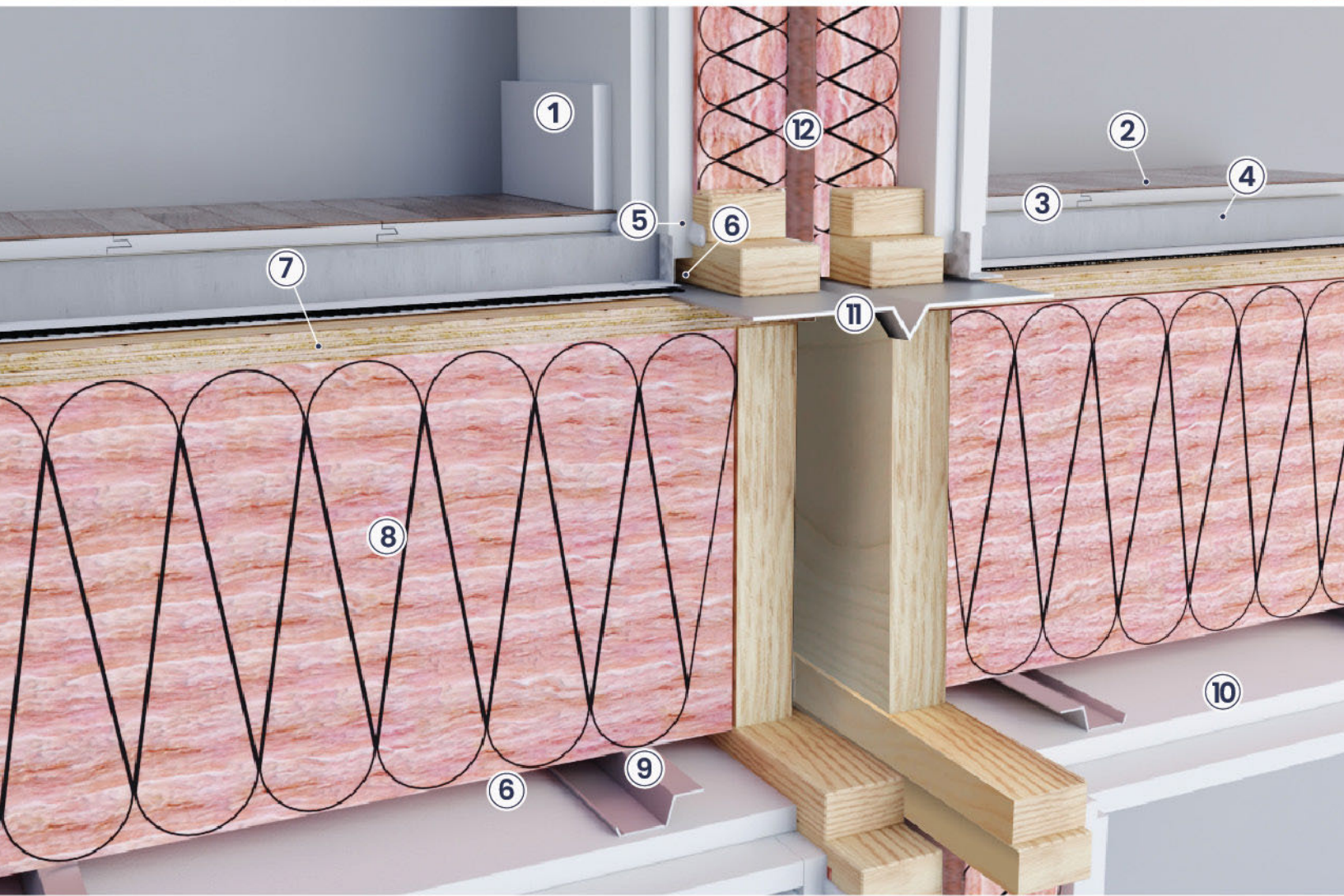
LIVEATMOSAIC.CA
HIGHSTREET

In our continuing effort to improve and maintain high standards, the developer reserves the right to modify or change plans, specifications, features, and prices without notice. Materials may be substituted with equivalent or better at the developer's sole discretion. Renderings are an artist's conception and are intended as a general reference only. Please see the disclosure statement for specific offering details.

MOSAIC

WHAT WE'RE MADE OF

FLOOR + WALL ASSEMBLY



LEGEND

- 1. Baseboard
- 2. Finished Floor
- 3. 1.5" Gypcrete
- 4. Acoustic Soundmat

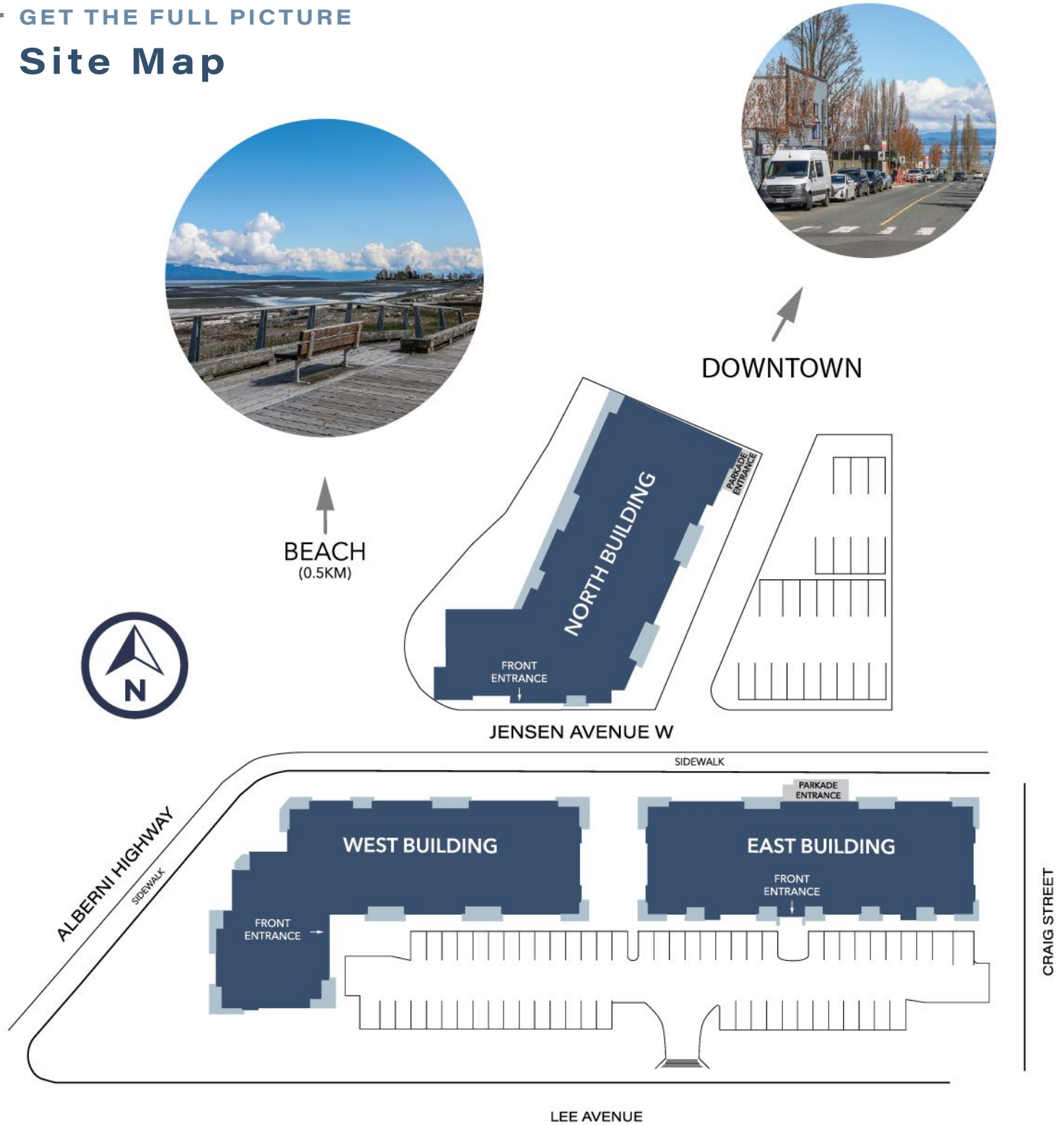
- 5. Acoustic Isolation Strip
- 6. 1/2" Air Gap
- 7. OSB Subfloor
- 8. Acoustic Insulation
- 9. Resilient Channels

- 10. 2 Layers Gypsum
- 11. Firestop
- 12. 1" Air Gap

Illustrations, images, and renderings are for illustrative purposes only and actual product may vary. The developer reserves the right to make changes or substitutions to the building design, specifications, and floor plans without notice should it be necessary. Measurements and square footage are approximate and actual sizes may vary. This is not an offering of sale. Any such offering can only be made after filing a disclosure statement.

— GET THE FULL PICTURE

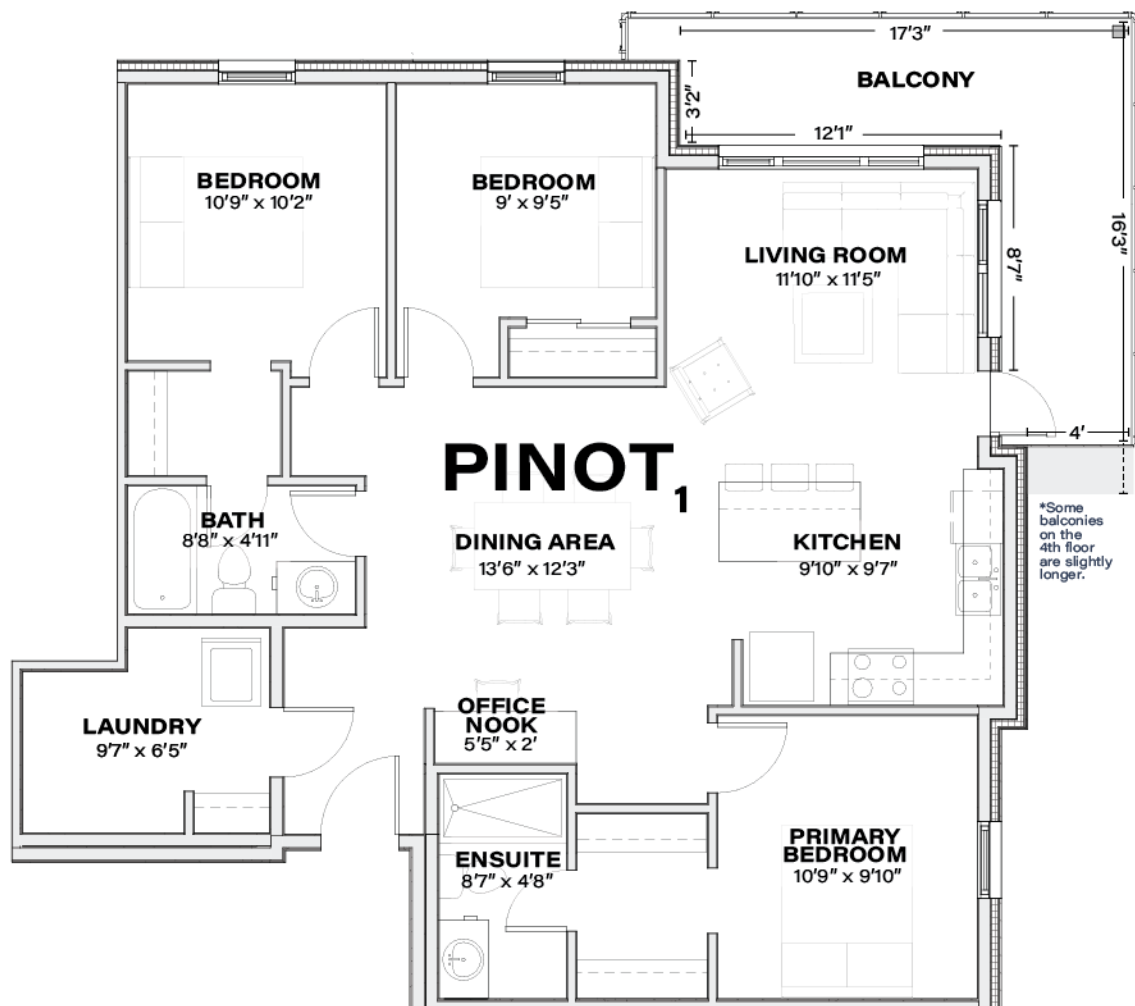
Site Map



MOSAIC

FLOOR PLANS: 3 BEDROOMS

MODEL	BEDROOMS	BATHS	SQUARE FEET
Pinot ₁	3	2	1,128



MOSAIC
WEST

1ST + 2ND FLOORS



3RD FLOOR



4TH FLOOR

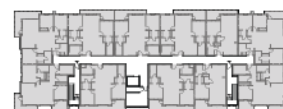


MOSAIC
EAST

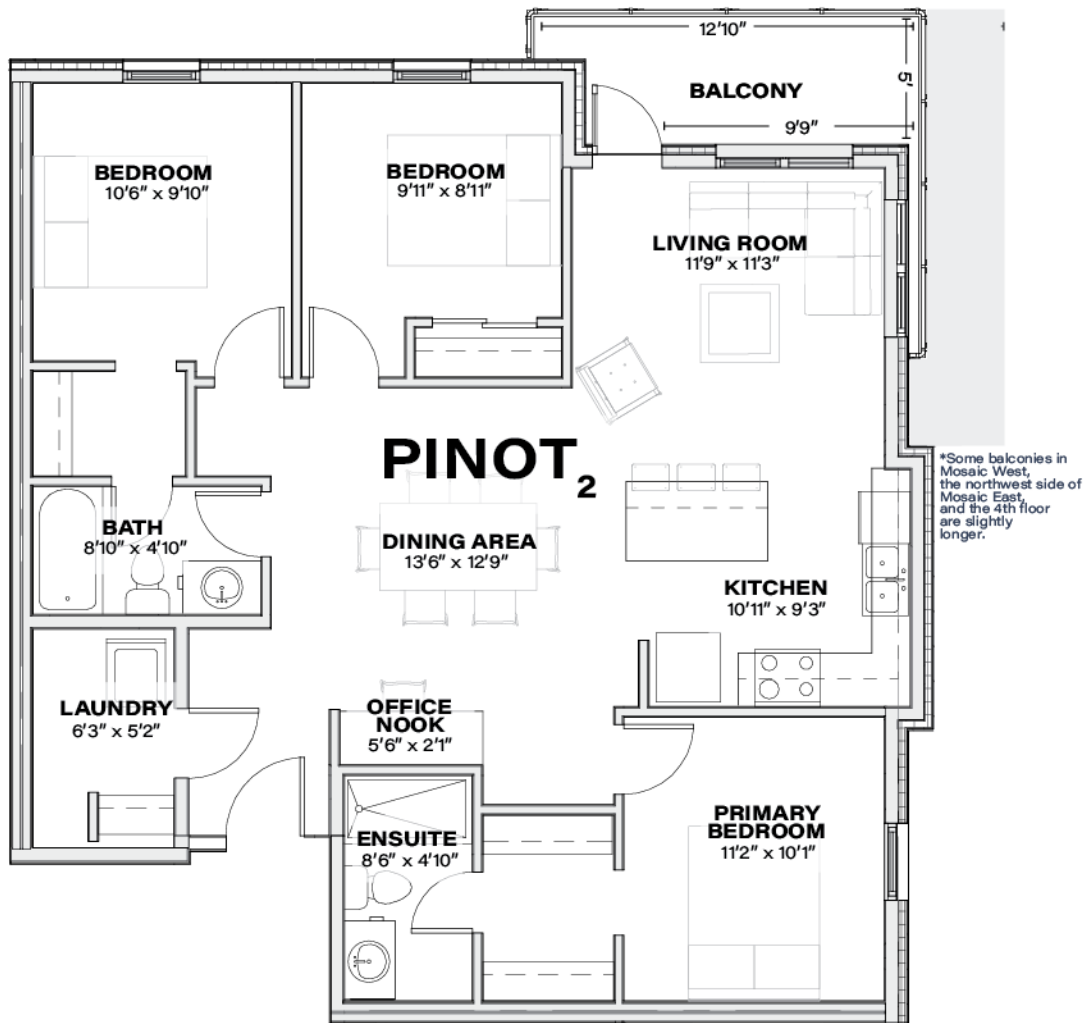
1ST, 2ND + 3RD FLOORS



4TH FLOOR



MODEL	BEDROOMS	BATHS	SQUARE FEET
Pinot ₂	3	2	1,098



MOSAIC
WEST

1ST + 2ND FLOORS



4TH FLOOR

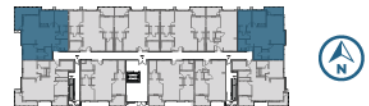


3RD FLOOR



MOSAIC
EAST

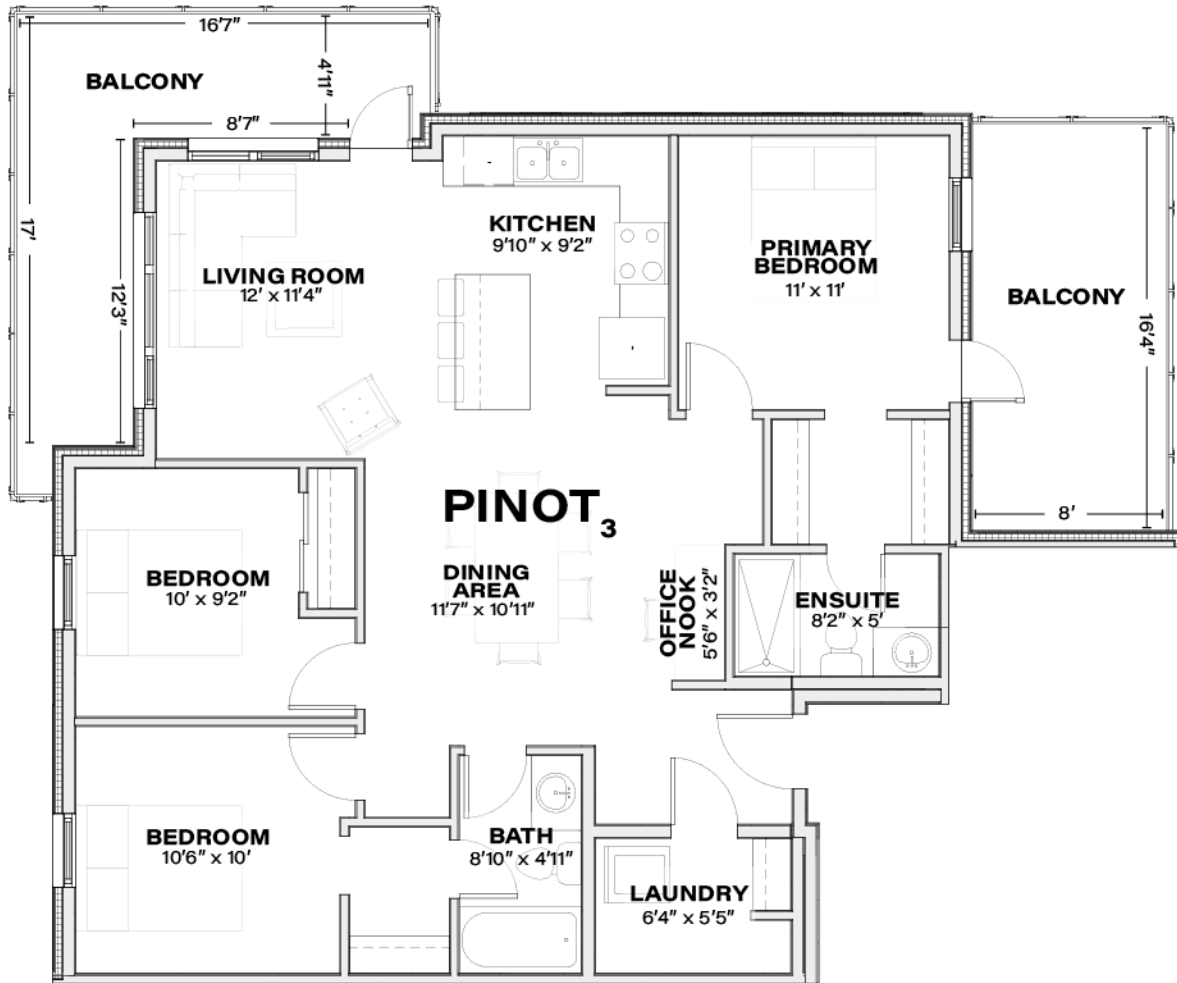
1ST, 2ND + 3RD FLOORS



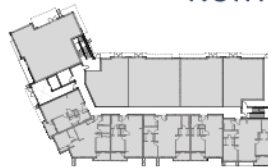
4TH FLOOR



MODEL	BEDROOMS	BATHS	SQUARE FEET
Pinot ₃	3	2	1,115



MOSAIC
NORTH



1ST FLOOR



3RD FLOOR



2ND FLOOR

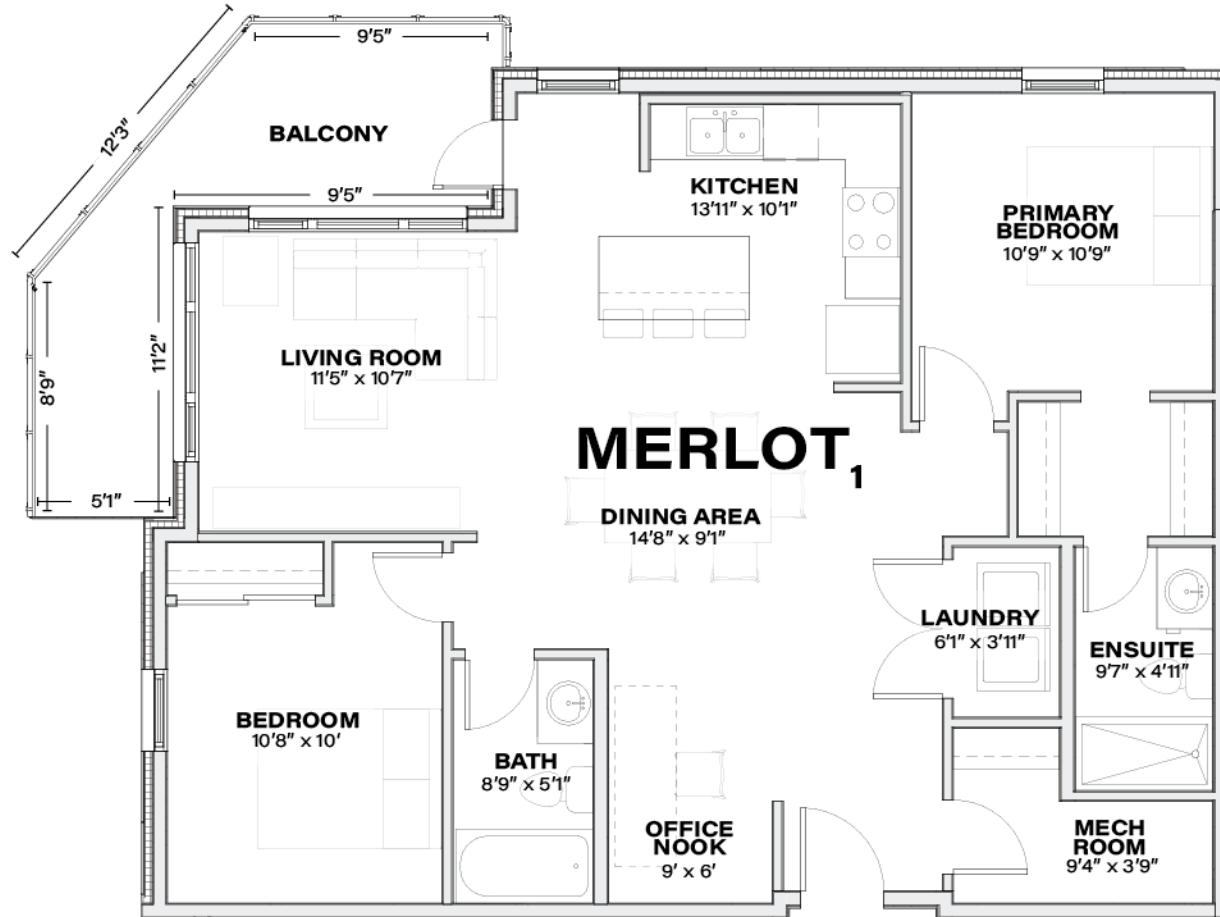


4TH FLOOR



FLOOR PLANS: 2 BEDROOMS

MODEL	BEDROOMS	BATHS	SQUARE FEET
Merlot ₁	2	2	1,076



MOSAIC
WEST

1ST + 2ND FLOORS



4TH FLOOR



3RD FLOOR

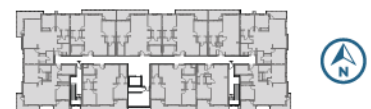


MOSAIC
EAST

1ST, 2ND + 3RD FLOORS

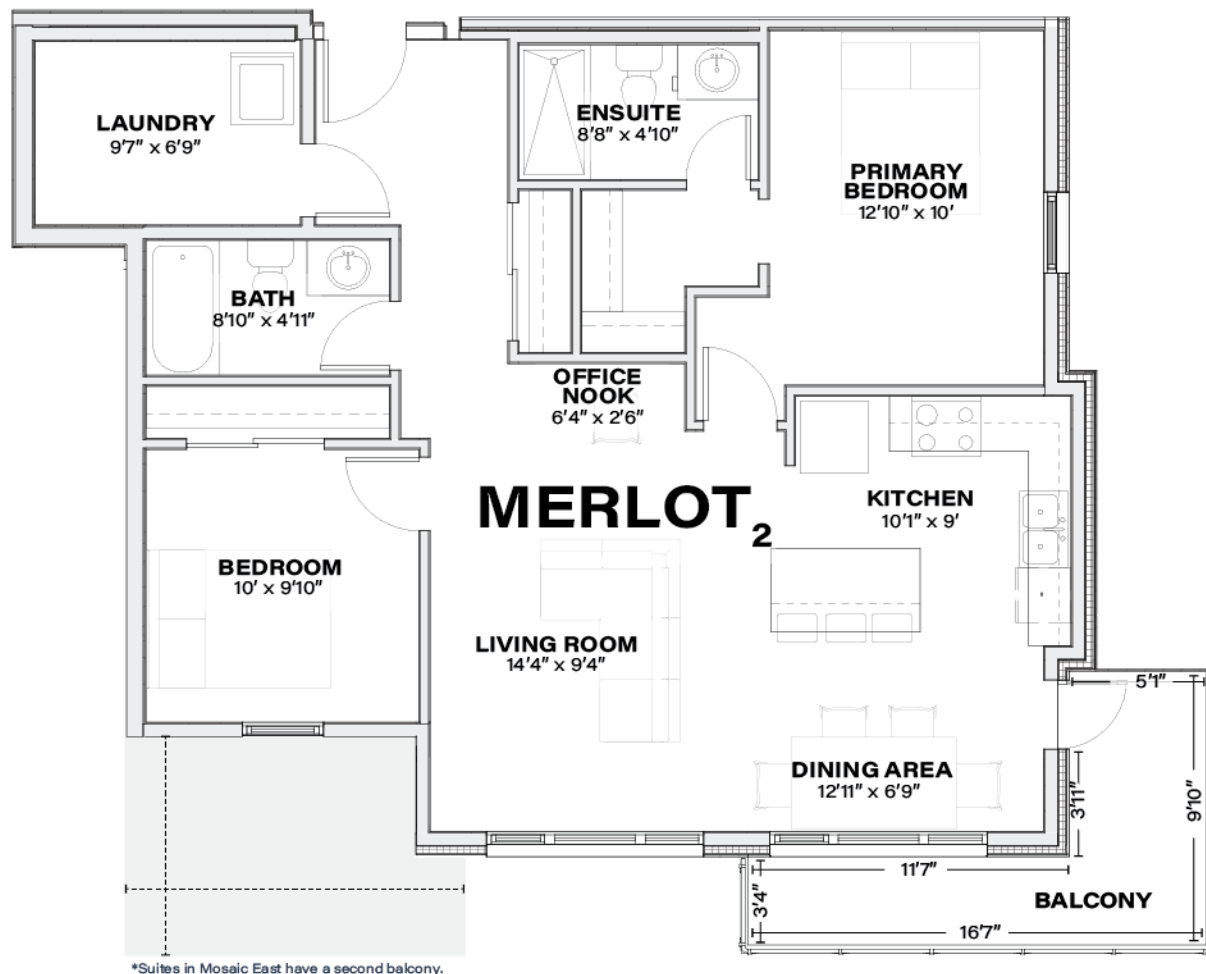


4TH FLOOR



FLOOR PLANS: 2 BEDROOMS

MODEL	BEDROOMS	BATHS	SQUARE FEET
Merlot ₂	2	2	980



*Suites in Mosaic East have a second balcony.

MOSAIC
WEST

1ST + 2ND FLOORS



4TH FLOOR



3RD FLOOR

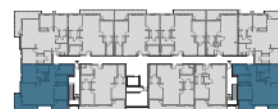


MOSAIC
EAST

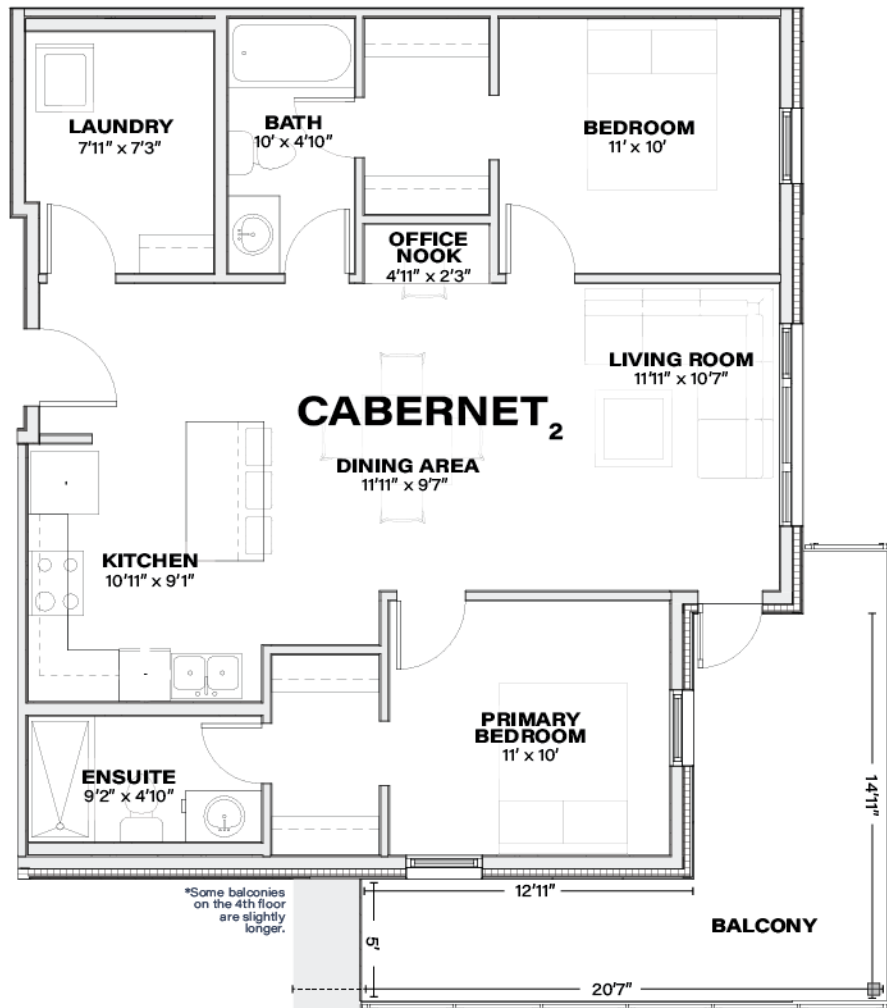
1ST, 2ND + 3RD FLOORS



4TH FLOOR



MODEL	BEDROOMS	BATHS	SQUARE FEET
Cabernet ₂	2	2	958



MOSAIC
WEST

1ST + 2ND FLOORS



4TH FLOOR

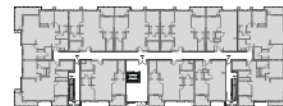


3RD FLOOR

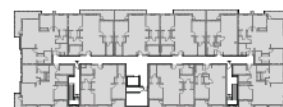


MOSAIC
EAST

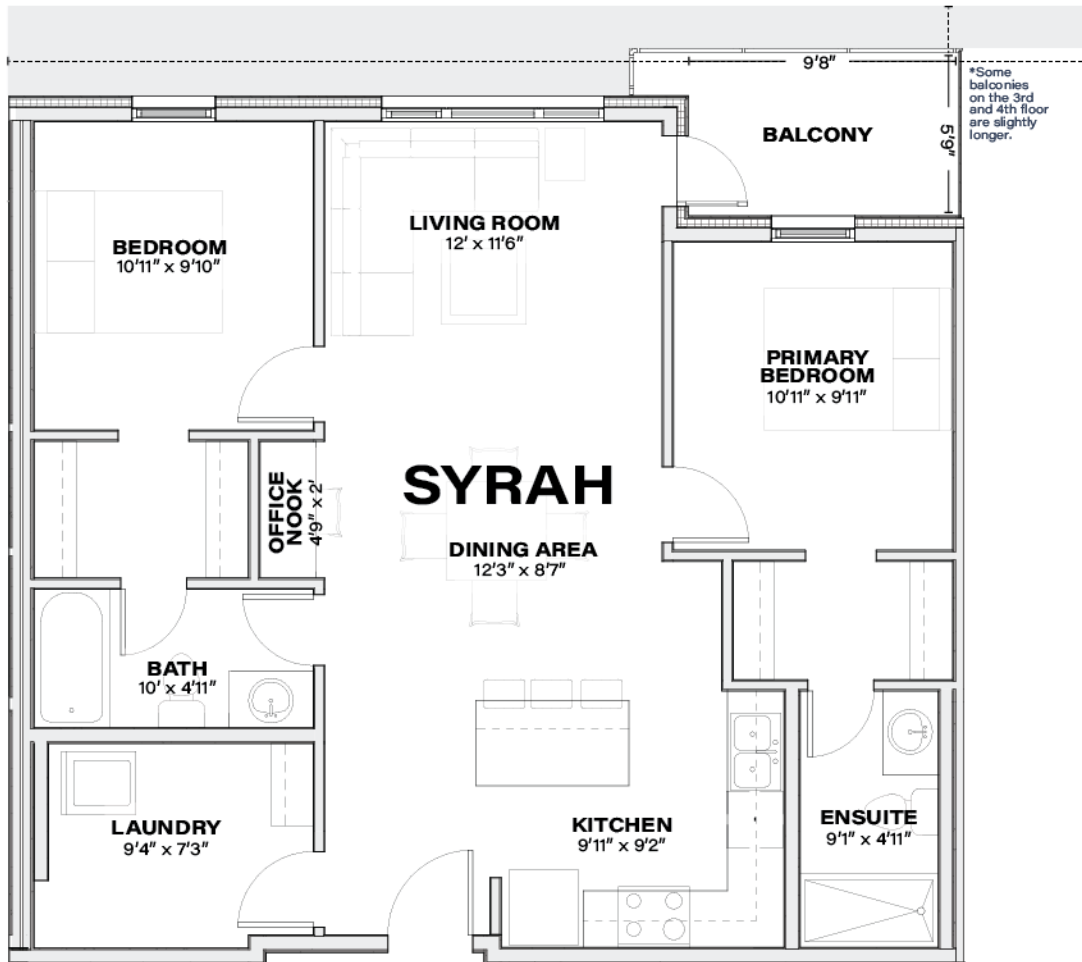
1ST, 2ND + 3RD FLOORS



4TH FLOOR



MODEL	BEDROOMS	BATHS	SQUARE FEET
Syrah	2	2	947



MOSAIC WEST

1ST + 2ND FLOORS



3RD FLOOR



4TH FLOOR



MOSAIC EAST

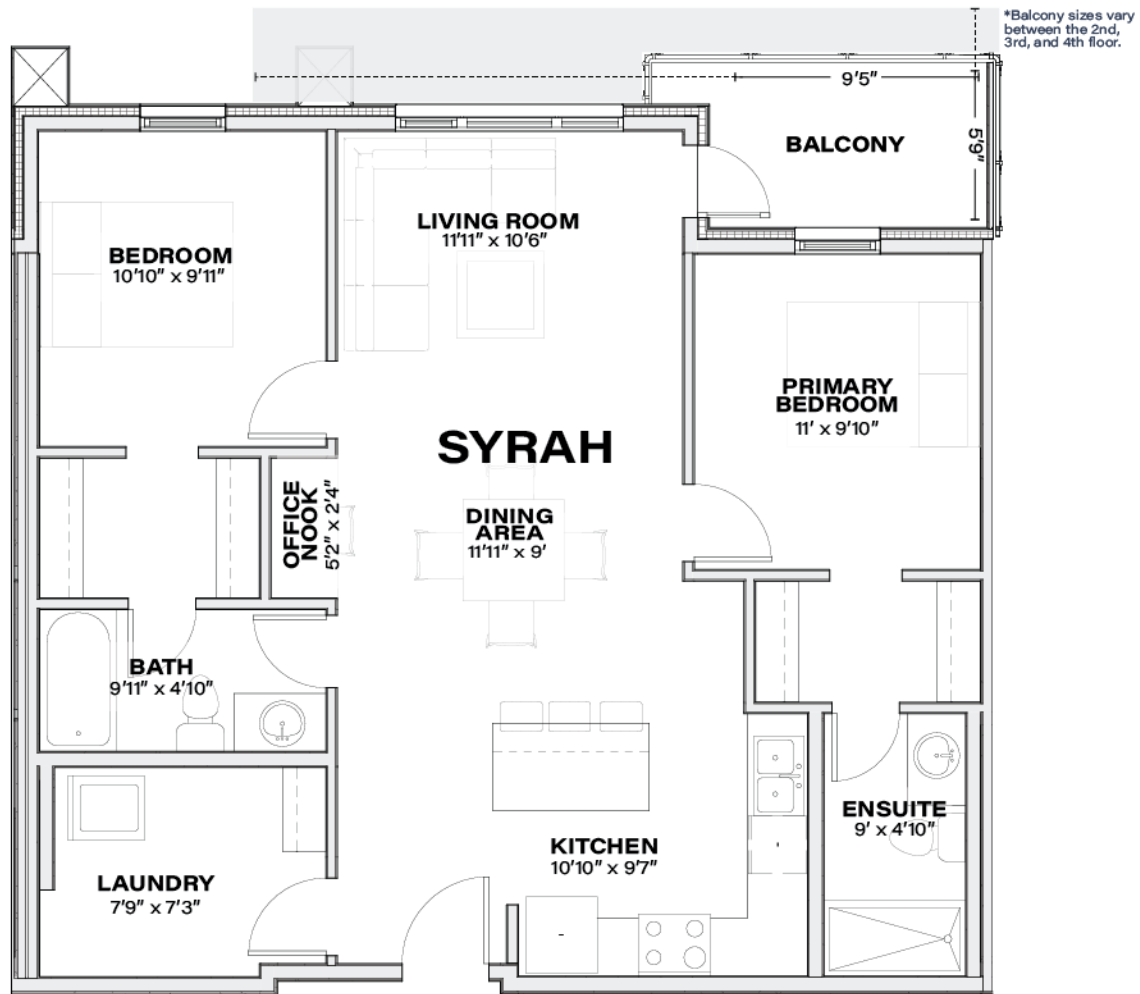
1ST, 2ND + 3RD FLOORS



4TH FLOOR



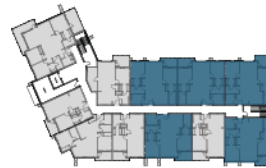
MODEL	BEDROOMS	BATHS	SQUARE FEET
Syrah	2	2	947



MOSAIC
NORTH



1ST FLOOR



3RD FLOOR



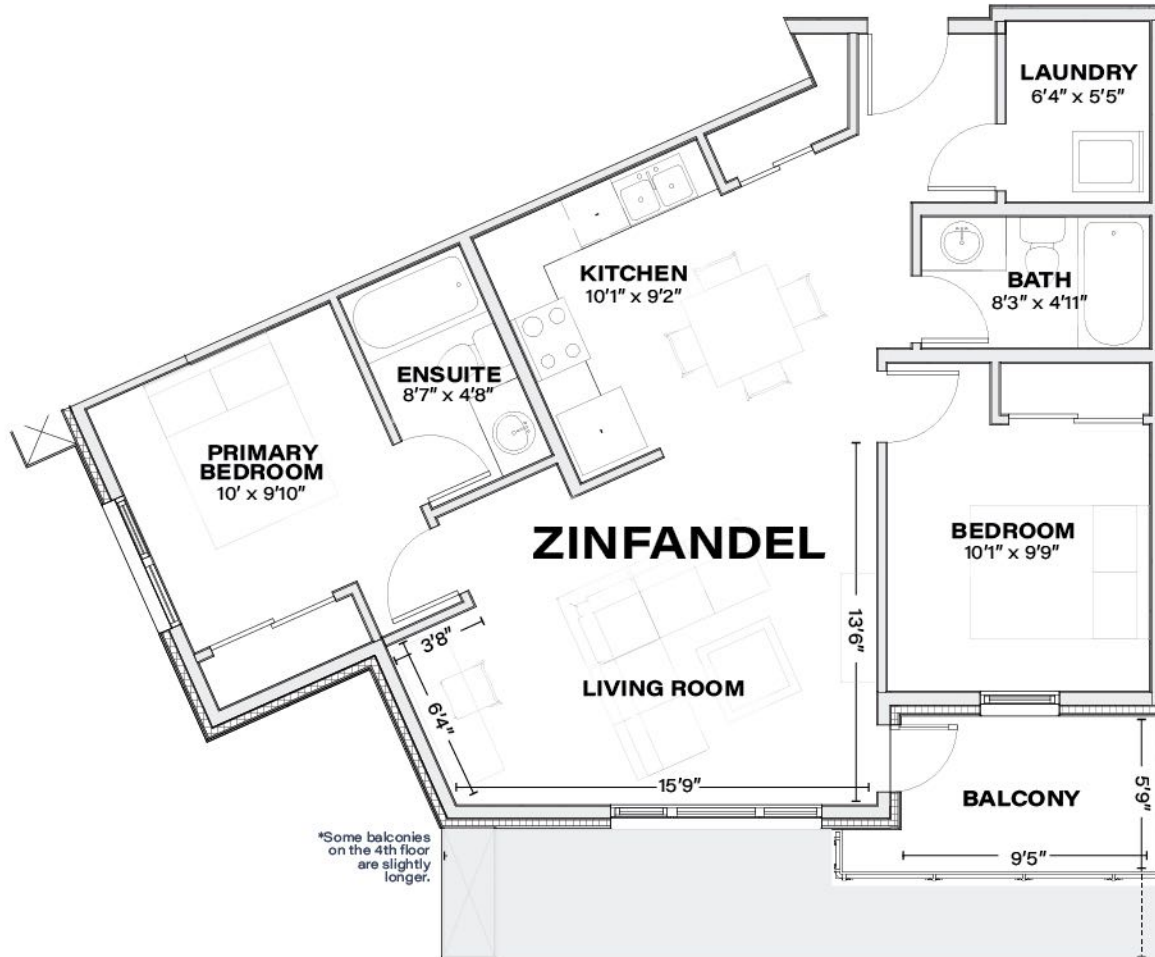
2ND FLOOR



4TH FLOOR



MODEL	BEDROOMS	BATHS	SQUARE FEET
Zinfandel	2	2	850



MOSAIC
NORTH



1ST FLOOR



2ND FLOOR

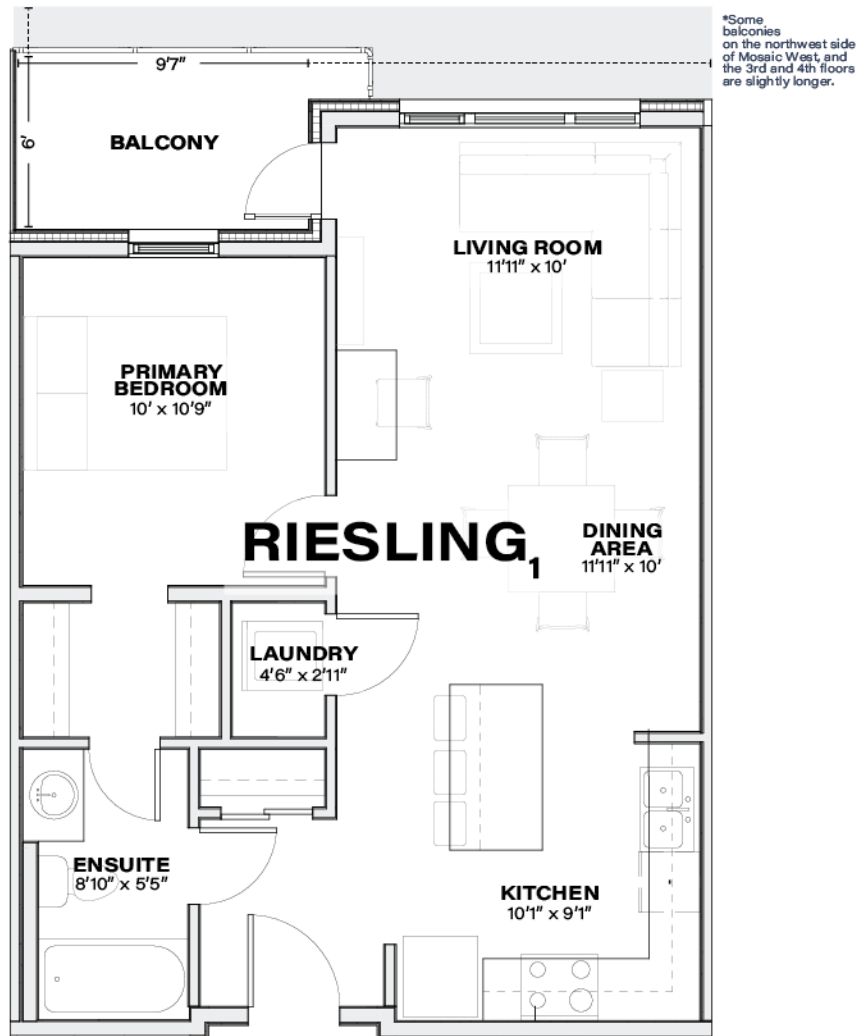


3RD FLOOR



4TH FLOOR

MODEL	BEDROOMS	BATHS	SQUARE FEET
Riesling ₁	1	1	646



MOSAIC
WEST

1ST + 2ND FLOORS



4TH FLOOR



3RD FLOOR



MOSAIC
EAST

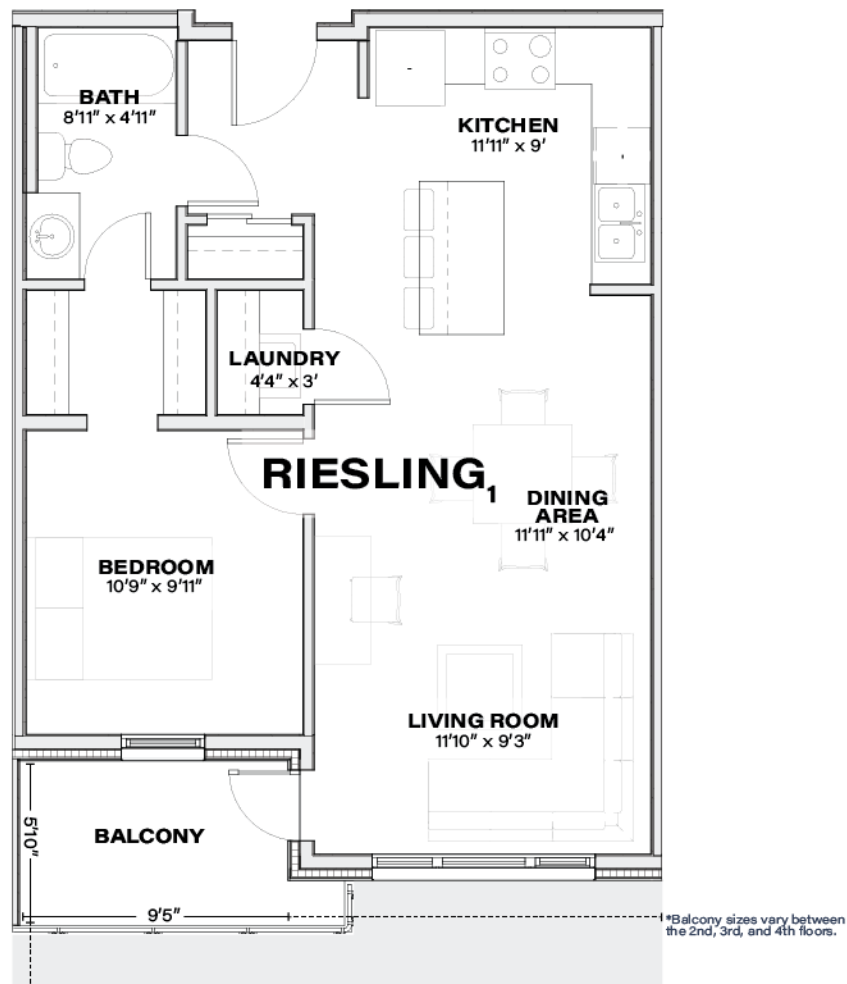
1ST, 2ND + 3RD FLOORS



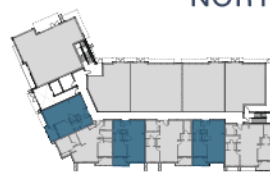
4TH FLOOR



MODEL	BEDROOMS	BATHS	SQUARE FEET
Riesling ₁	1	1	646



MO SAIC
NORTH



1ST FLOOR



3RD FLOOR



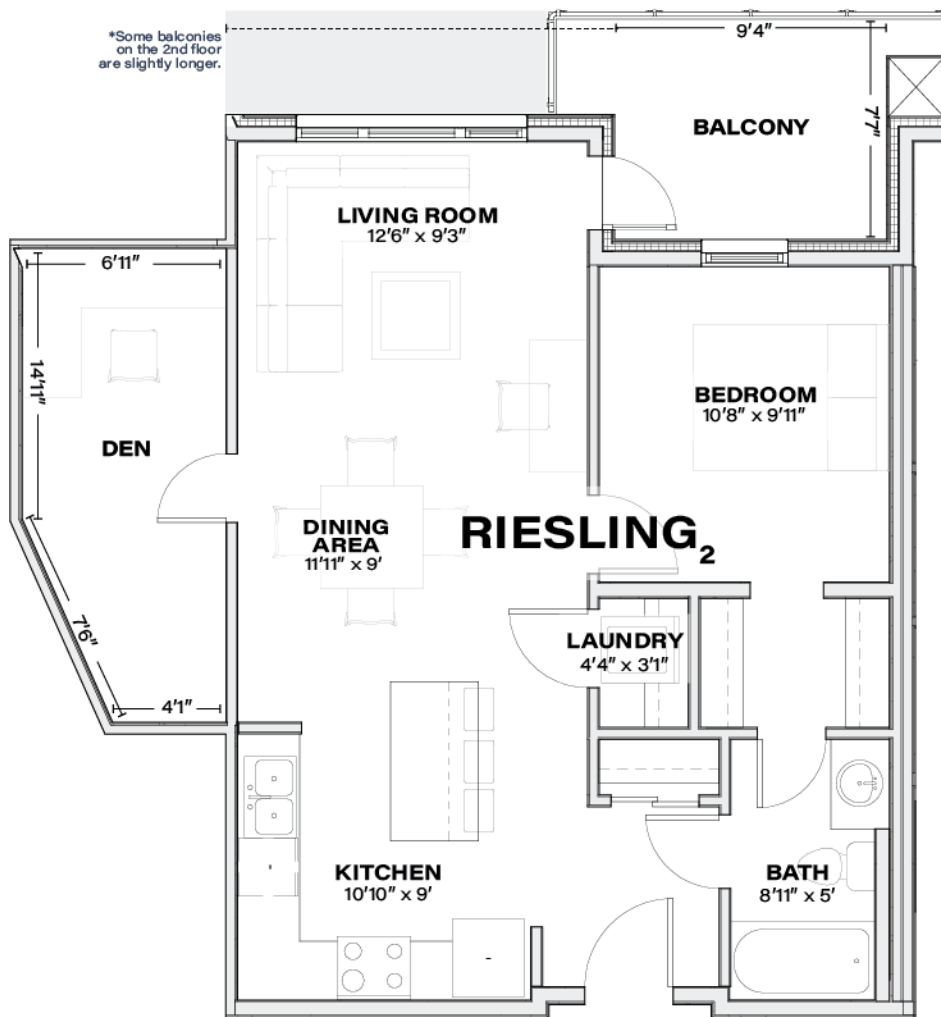
2ND FLOOR



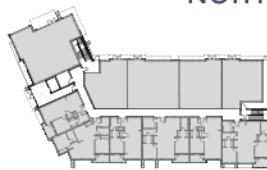
4TH FLOOR



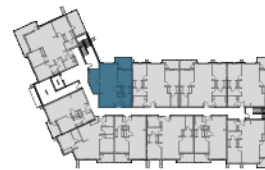
MODEL	BEDROOMS	BATHS	SQUARE FEET
Riesling ₂	1+DEN	1	755



MOSAIC
NORTH



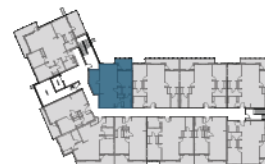
1ST FLOOR



3RD FLOOR



2ND FLOOR



4TH FLOOR



MOSAIC

HIGHSTREET