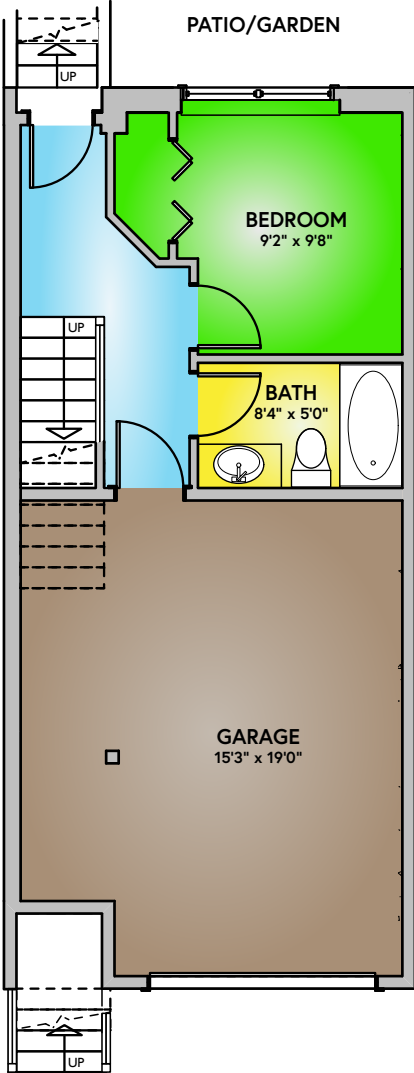


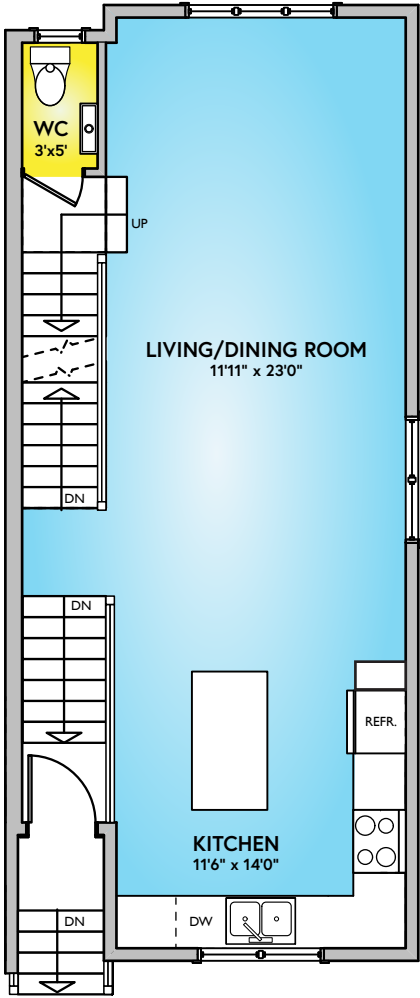
# BAYSIDE TOWNS

ON FIFTH

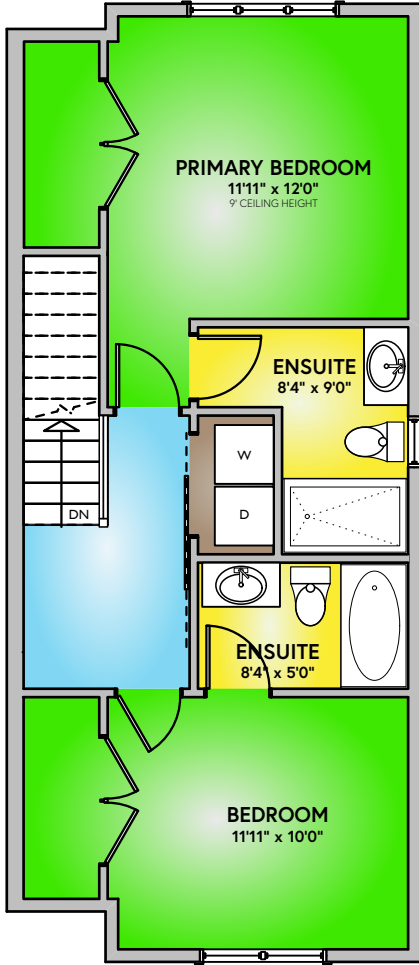
BLOCK B - UNIT 5  
1,638 sq. ft. - 3 Bed 4 Bath



LOWER FLOOR  
(565 sq. ft.)



MAIN FLOOR  
(550 sq. ft.)



UPPER FLOOR  
(568 sq. ft.)

WHILST EVERY ATTEMPT HAS BEEN MADE TO ENSURE THE ACCURACY OF THE FLOOR PLAN CONTAINED HERE, MEASUREMENTS OF DOORS, WINDOWS, ROOMS AND ANY OTHER ITEMS ARE APPROXIMATE AND NO RESPONSIBILITY IS TAKEN FOR ANY ERROR AND/OR OMISSION. MEASUREMENTS PRESENTED HEREIN ARE TAKEN FROM THE DEVELOPMENT PERMIT AND ARE NOT AS BUILT. ALL INFORMATION IS APPROXIMATE AND SUBJECT TO CHANGE.