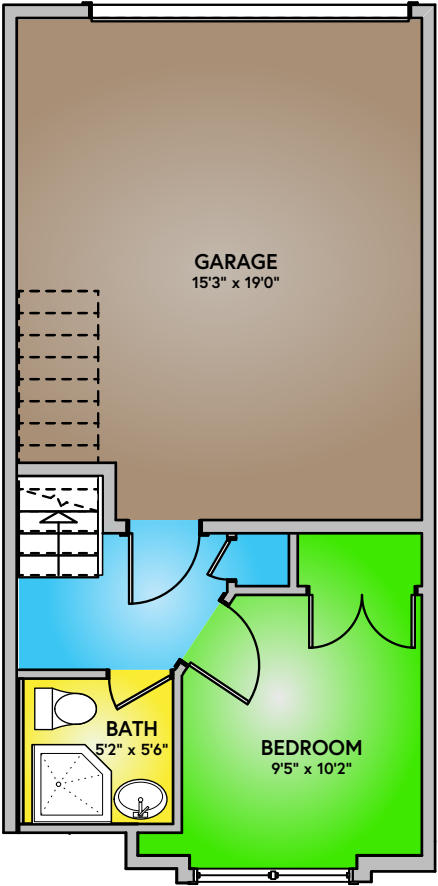


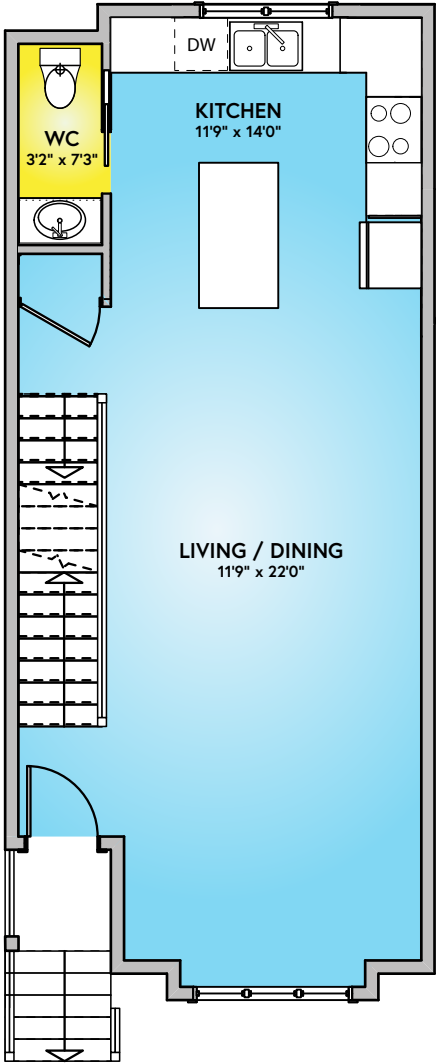
BAYSIDE TOWNS

ON FIFTH

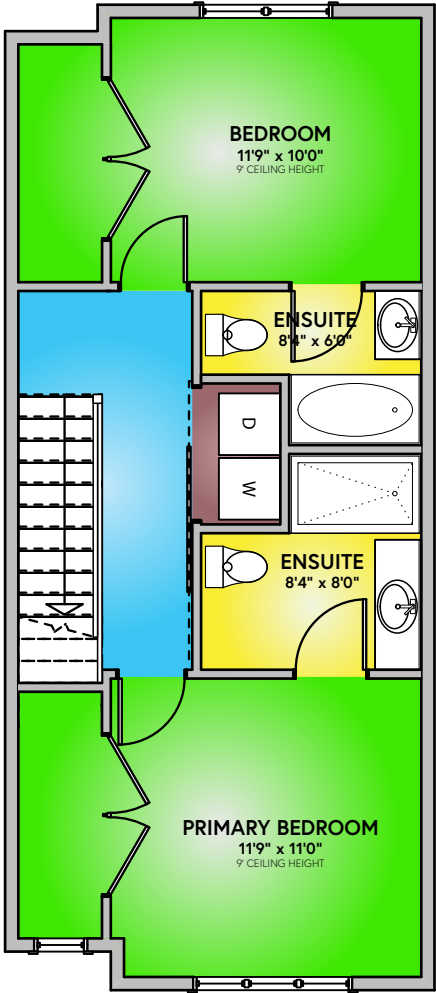
BLOCK E - UNIT 14
1,665 sq. ft. - 3 Bed 4 Bath



LOWER FLOOR
(527 sq. ft.)



MAIN FLOOR
(543 sq. ft.)



UPPER FLOOR
(555 sq. ft.)

WHILST EVERY ATTEMPT HAS BEEN MADE TO ENSURE THE ACCURACY OF THE FLOOR PLAN CONTAINED HERE, MEASUREMENTS OF DOORS, WINDOWS, ROOMS AND ANY OTHER ITEMS ARE APPROXIMATE AND NO RESPONSIBILITY IS TAKEN FOR ANY ERROR AND/OR OMISSION. MEASUREMENTS PRESENTED HEREIN ARE TAKEN FROM THE DEVELOPMENT PERMIT AND ARE NOT AS BUILT. ALL INFORMATION IS APPROXIMATE AND SUBJECT TO CHANGE.