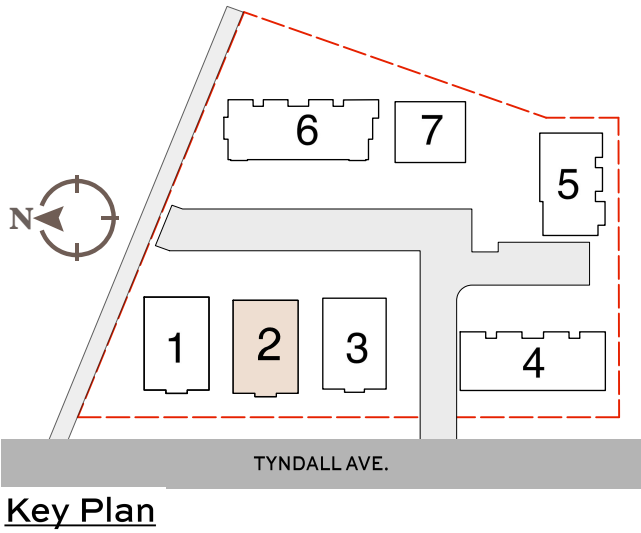
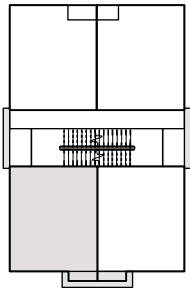


MAIN FLOOR PLAN - BUILDING 2
Boutique Suite

Strata #4
Suite No.2-101
Suite Type A
36 m² / 384 ft²

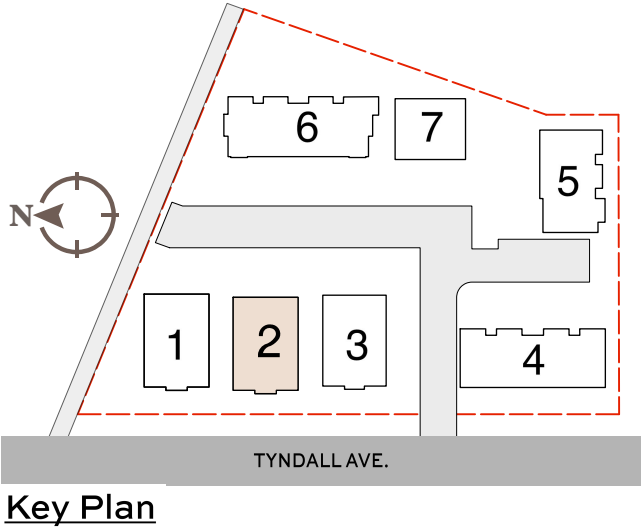
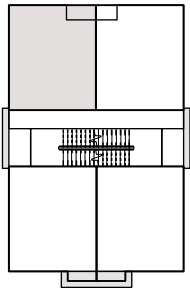


"The developer reserves the right to make modifications. Sizes and dimensions are approximate and may vary with actual strata plans, survey and model. Areas shown are measured to the centreline of: suite separation wall; exterior window glazing; exterior wood studs and exterior walls. This is not an offering for sale. Such an offering must be accompanied by a disclosure statement. E&OE "

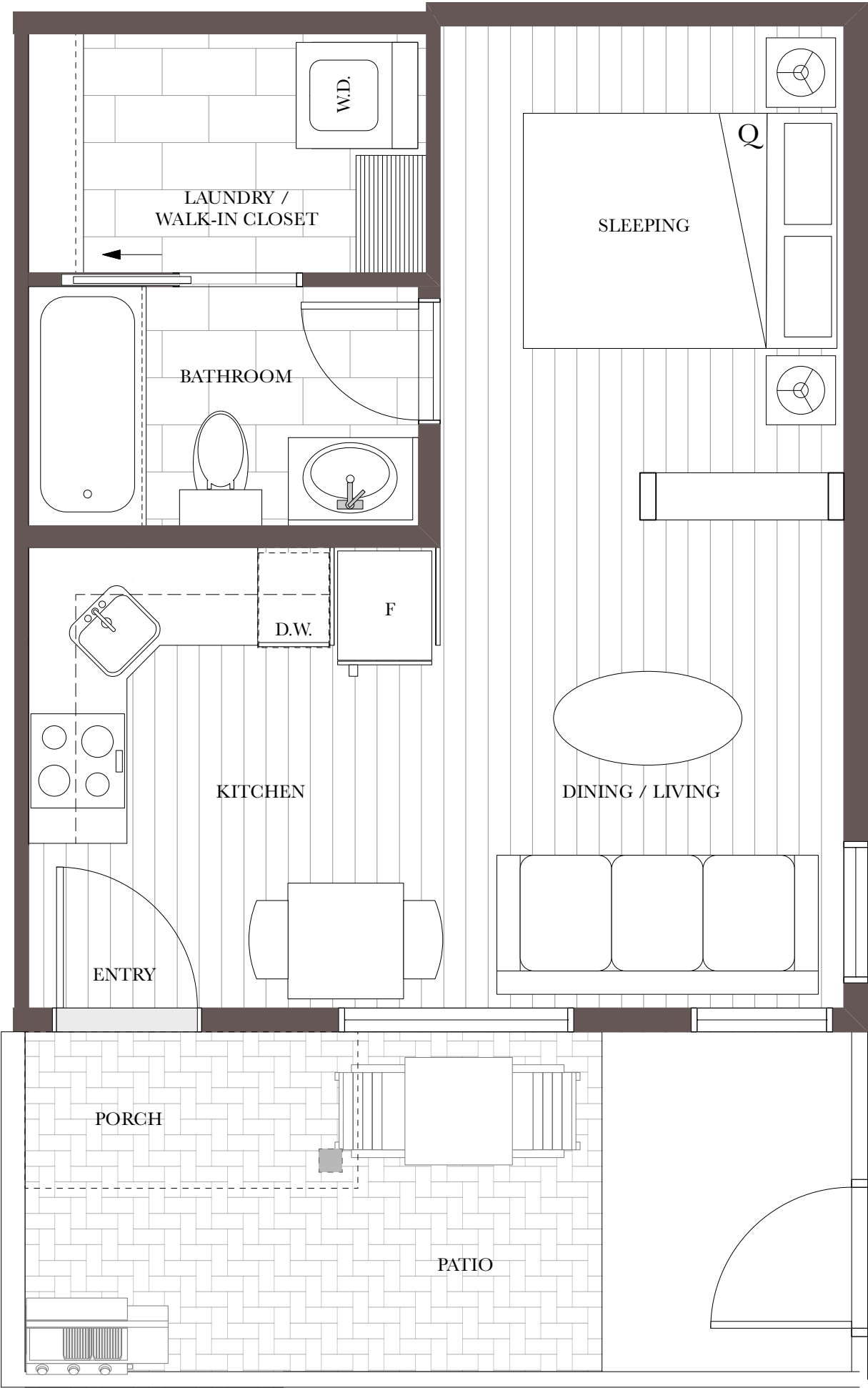


MAIN FLOOR PLAN - BUILDING 2
Boutique Suite

Strata #5
Suite No.2-102
Suite Type A
42 m² / 453 ft²

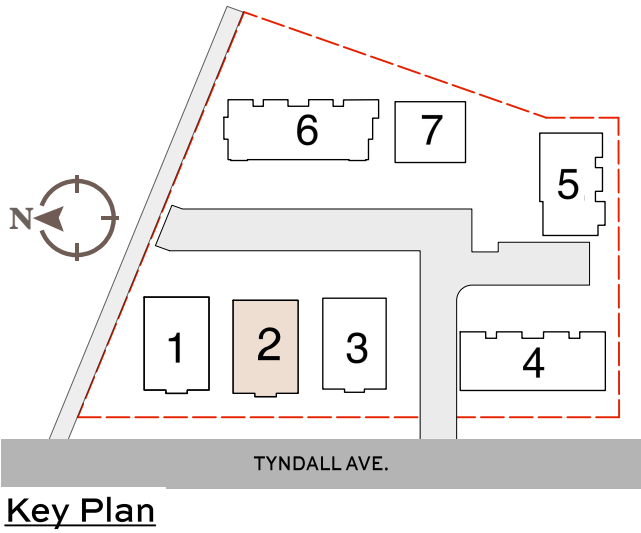
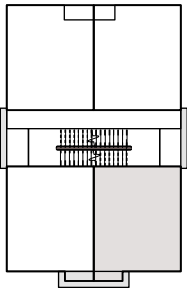


"The developer reserves the right to make modifications. Sizes and dimensions are approximate and may vary with actual strata plans, survey and model. Areas shown are measured to the centreline of: suite separation wall; exterior window glazing; exterior wood studs and exterior walls. This is not an offering for sale. Such an offering must be accompanied by a disclosure statement. E&OE "



MAIN FLOOR PLAN - BUILDING 2
Boutique Suite

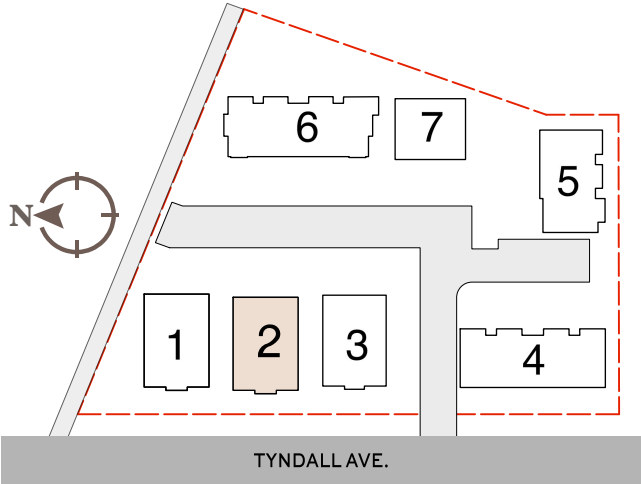
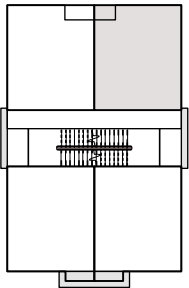
Strata #7
Suite No.2-103
Suite Type A
36 m² / 384 ft²





MAIN FLOOR PLAN - BUILDING 2
Boutique Suite

Strata #6
Suite No.2-104
Suite Type A
42 m² / 453 ft²



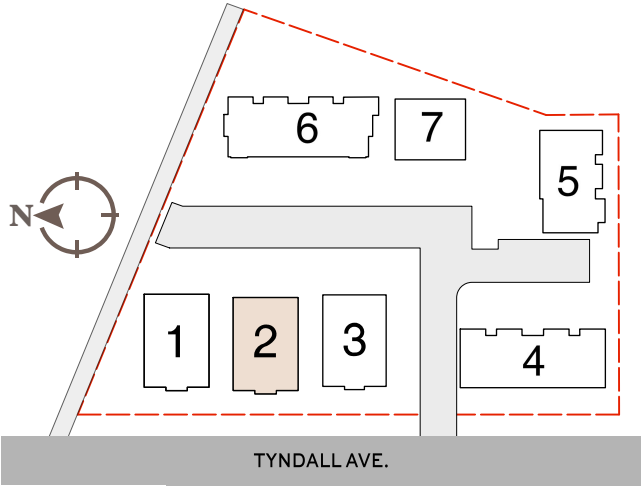
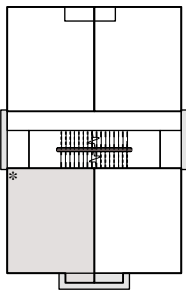
Key Plan

"The developer reserves the right to make modifications. Sizes and dimensions are approximate and may vary with actual strata plans, survey and model. Areas shown are measured to the centreline of: suite separation wall; exterior window glazing; exterior wood studs and exterior walls. This is not an offering for sale. Such an offering must be accompanied by a disclosure statement. E&OE "



THIRD FLOOR PLAN - BUILDING 2
Boutique Suite

Strata #39
Suite No.2-201
Suite Type D
37 m² / 396 ft²

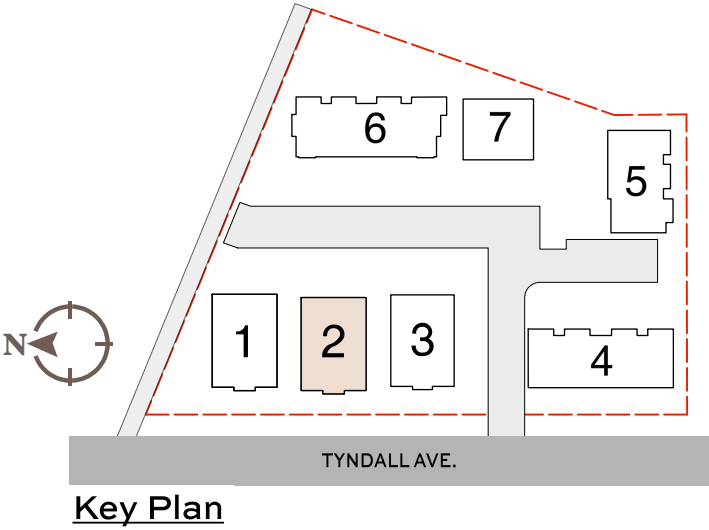
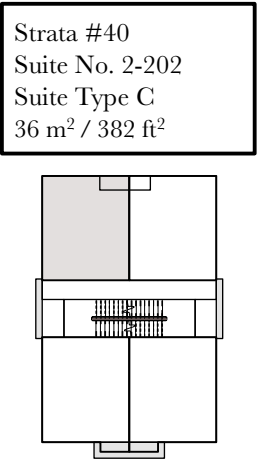


Key Plan

"The developer reserves the right to make modifications. Sizes and dimensions are approximate and may vary with actual strata plans, survey and model. Areas shown are measured to the centreline of: suite separation wall; exterior window glazing; exterior wood studs and exterior walls. This is not an offering for sale. Such an offering must be accompanied by a disclosure statement. E&OE "



THIRD FLOOR PLAN - BUILDING 2
Boutique Suite

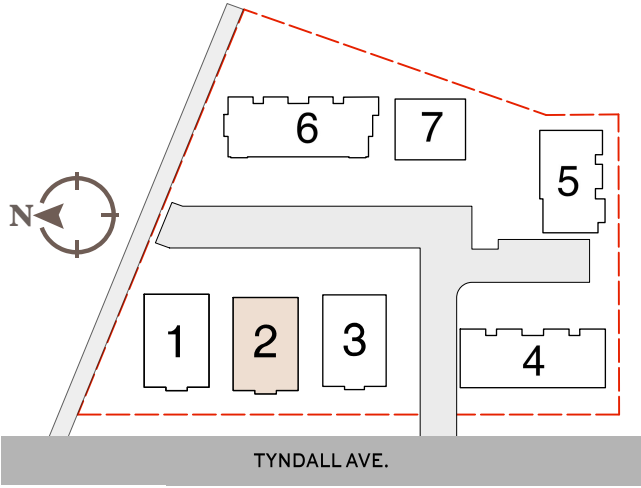
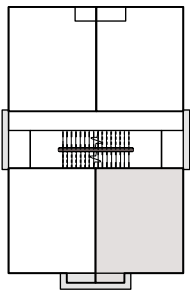


"The developer reserves the right to make modifications. Sizes and dimensions are approximate and may vary with actual strata plans, survey and model. Areas shown are measured to the centreline of: suite separation wall; exterior window glazing; exterior wood studs and exterior walls. This is not an offering for sale. Such an offering must be accompanied by a disclosure statement. E&OE "



THIRD FLOOR PLAN - BUILDING 2
Boutique Suite

Strata #42
Suite No. 2-203
Suite Type D
37 m² / 396 ft²

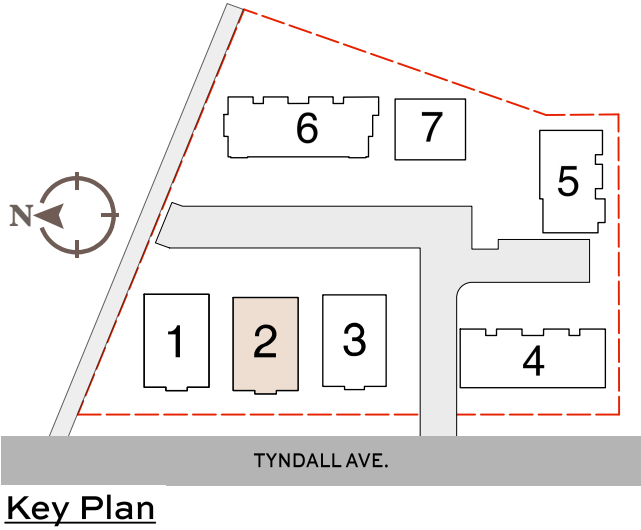
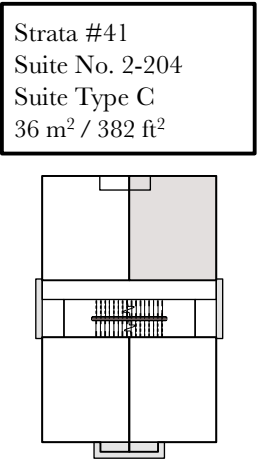


Key Plan

"The developer reserves the right to make modifications. Sizes and dimensions are approximate and may vary with actual strata plans, survey and model. Areas shown are measured to the centreline of: suite separation wall; exterior window glazing; exterior wood studs and exterior walls. This is not an offering for sale. Such an offering must be accompanied by a disclosure statement. E&OE "



THIRD FLOOR PLAN - BUILDING 2
Boutique Suite

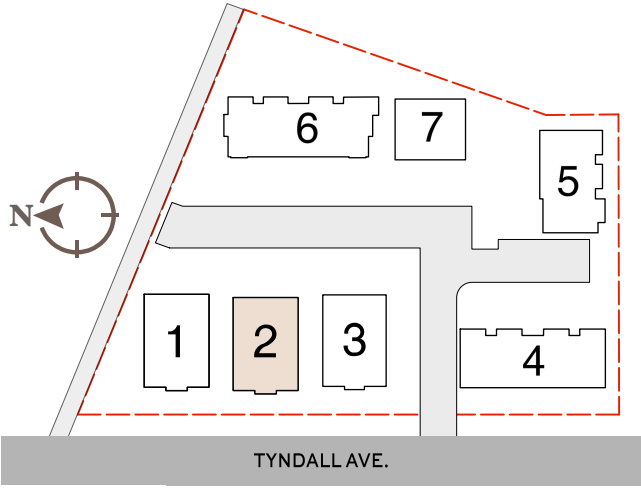
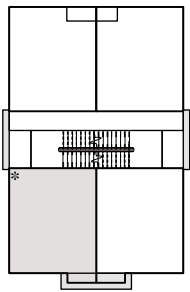


"The developer reserves the right to make modifications. Sizes and dimensions are approximate and may vary with actual strata plans, survey and model. Areas shown are measured to the centreline of: suite separation wall; exterior window glazing; exterior wood studs and exterior walls. This is not an offering for sale. Such an offering must be accompanied by a disclosure statement. E&OE "



THIRD FLOOR PLAN - BUILDING 2
Boutique Suite

Strata #51
Suite No. 2-301
Suite Type D
37 m² / 396 ft²



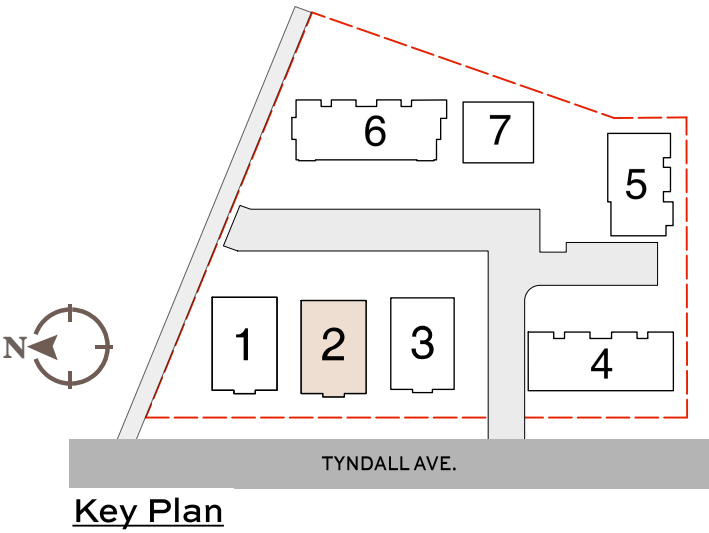
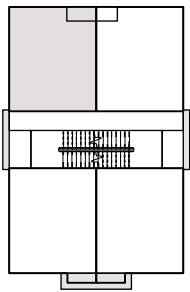
Key Plan

"The developer reserves the right to make modifications. Sizes and dimensions are approximate and may vary with actual strata plans, survey and model. Areas shown are measured to the centreline of: suite separation wall; exterior window glazing; exterior wood studs and exterior walls. This is not an offering for sale. Such an offering must be accompanied by a disclosure statement. E&OE "



THIRD FLOOR PLAN - BUILDING 2
Boutique Suite

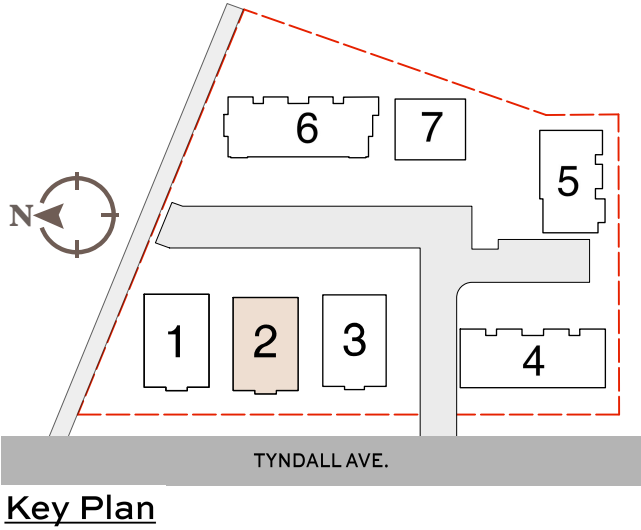
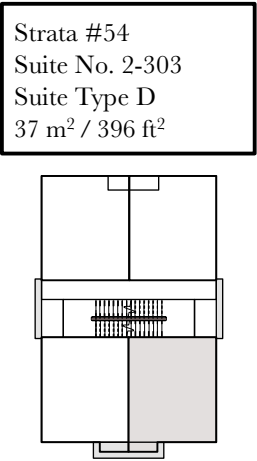
Strata #52
Suite No. 2-302
Suite Type C
36 m² / 382 ft²



"The developer reserves the right to make modifications. Sizes and dimensions are approximate and may vary with actual strata plans, survey and model. Areas shown are measured to the centreline of: suite separation wall; exterior window glazing; exterior wood studs and exterior walls. This is not an offering for sale. Such an offering must be accompanied by a disclosure statement. E&OE "



THIRD FLOOR PLAN - BUILDING 2
Boutique Suite

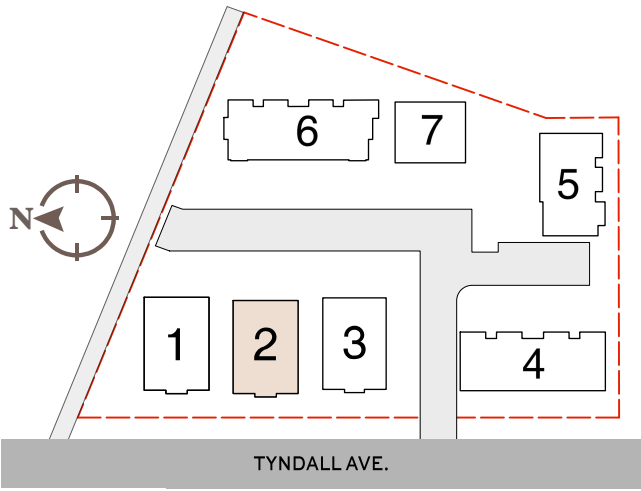
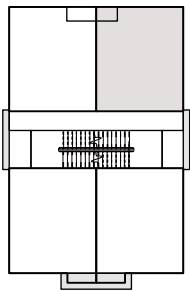


"The developer reserves the right to make modifications. Sizes and dimensions are approximate and may vary with actual strata plans, survey and model. Areas shown are measured to the centreline of: suite separation wall; exterior window glazing; exterior wood studs and exterior walls. This is not an offering for sale. Such an offering must be accompanied by a disclosure statement. E&OE "



THIRD FLOOR PLAN - BUILDING 2
Boutique Suite

Strata #53
Suite No. 2-304
Suite Type C
36 m² / 382 ft²



Key Plan

"The developer reserves the right to make modifications. Sizes and dimensions are approximate and may vary with actual strata plans, survey and model. Areas shown are measured to the centreline of: suite separation wall; exterior window glazing; exterior wood studs and exterior walls. This is not an offering for sale. Such an offering must be accompanied by a disclosure statement. E&OE "