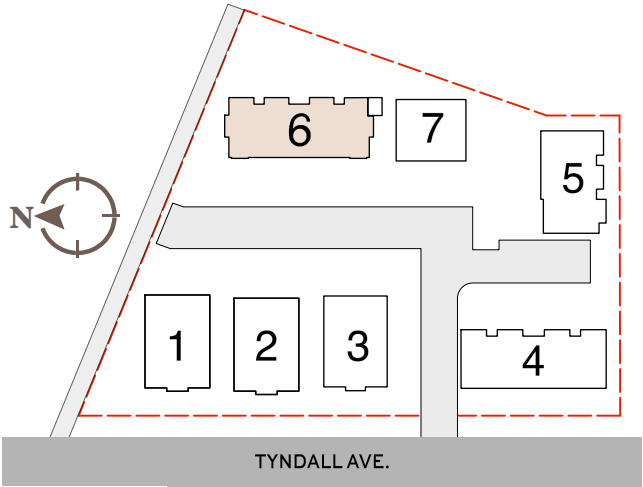
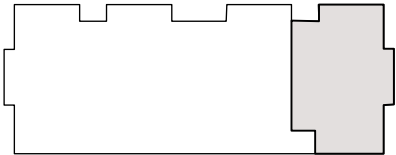


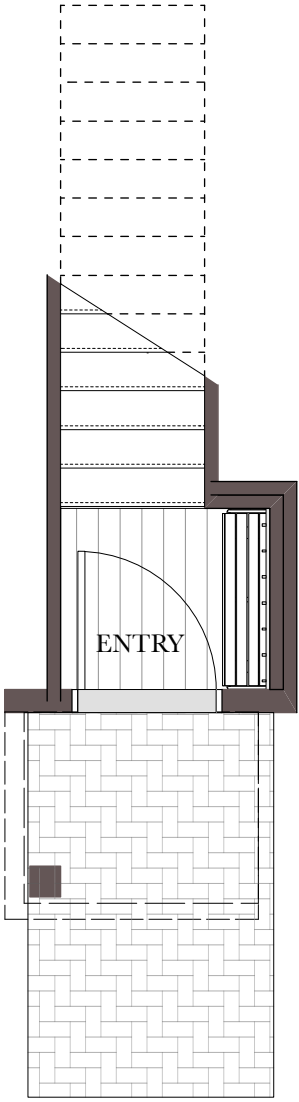
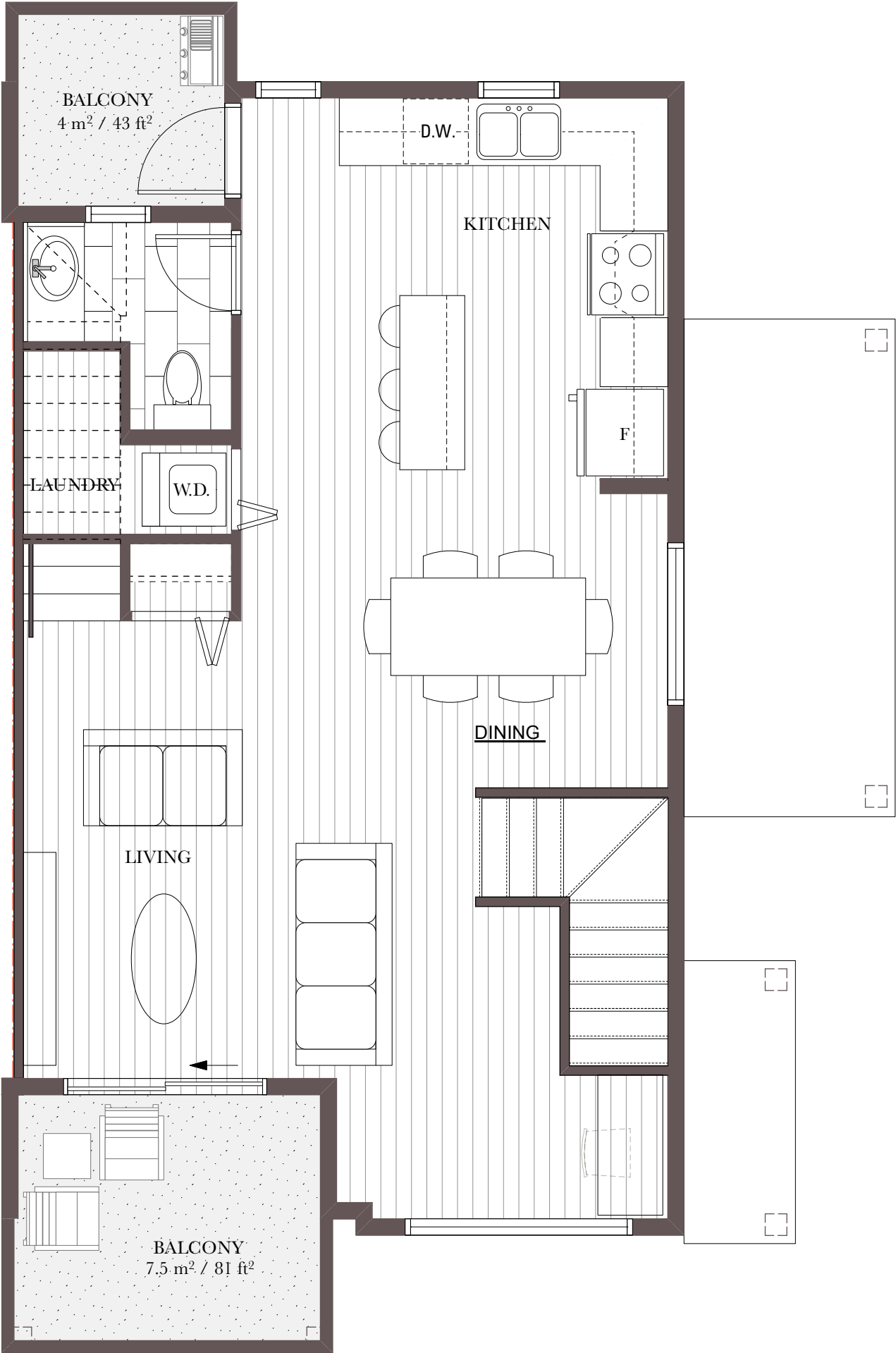
MAIN FLOOR PLAN: BUILDING 6
One Bedroom

Strata #27
Suite No. 6-104
TH Type C
65 m² / 696 ft²



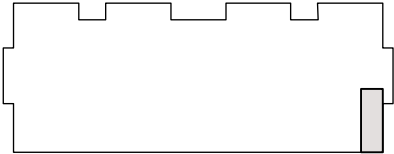
Key Plan

"The developer reserves the right to make modifications. Sizes and dimensions are approximate and may vary with actual strata plans, survey and model. Areas shown are measured to the centreline of: suite separation wall; exterior window glazing; exterior wood studs and exterior walls. This is not an offering for sale. Such an offering must be accompanied by a disclosure statement. E&OE "



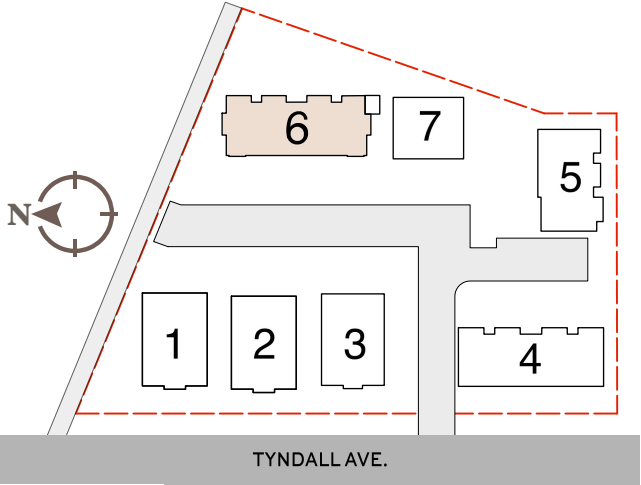
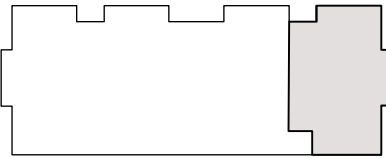
Main Floor Plan: Building 6

Strata #28
Suite No. 6-204
TH Type B
ENTRY LEVEL
2.25 m² / 24.22 ft²



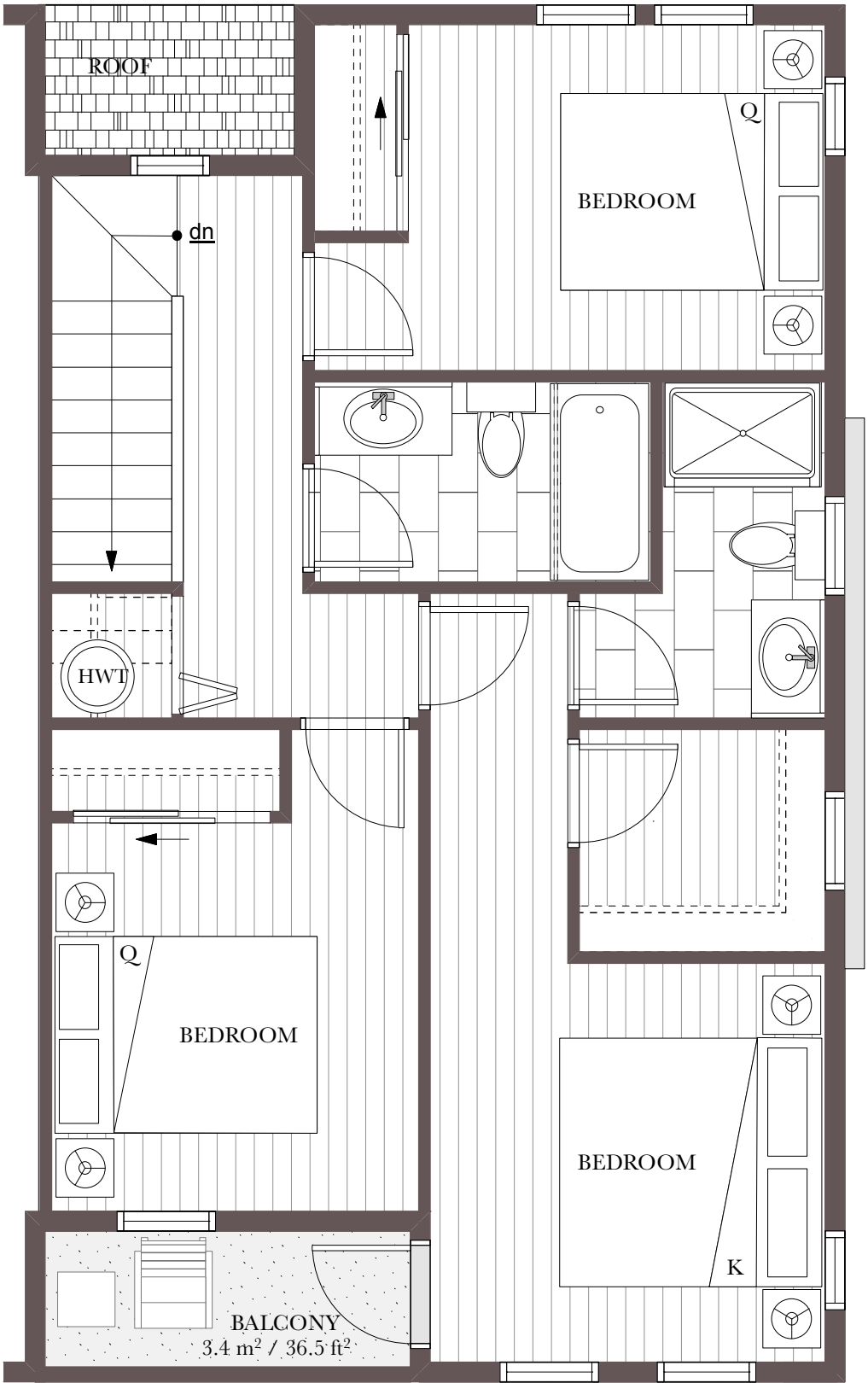
SECOND FLOOR PLAN: BUILDING 6
Three Bedroom

Strata #28
Suite No. 6-204
TH Type D
LOWER LEVEL
Lower + Upper =123 m² / 1322 ft²



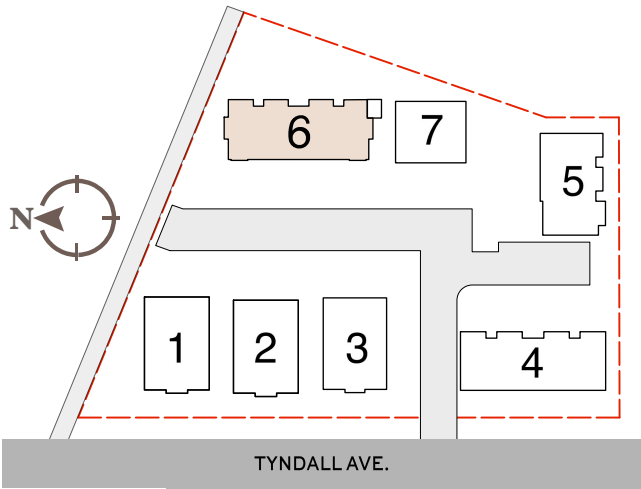
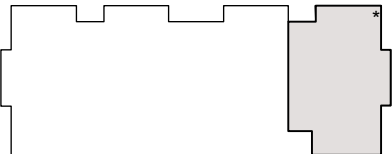
Key Plan

"The developer reserves the right to make modifications. Sizes and dimensions are approximate and may vary with actual strata plans, survey and model. Areas shown are measured to the centreline of: suite separation wall; exterior window glazing; exterior wood studs and exterior walls. This is not an offering for sale. Such an offering must be accompanied by a disclosure statement. E&OE "



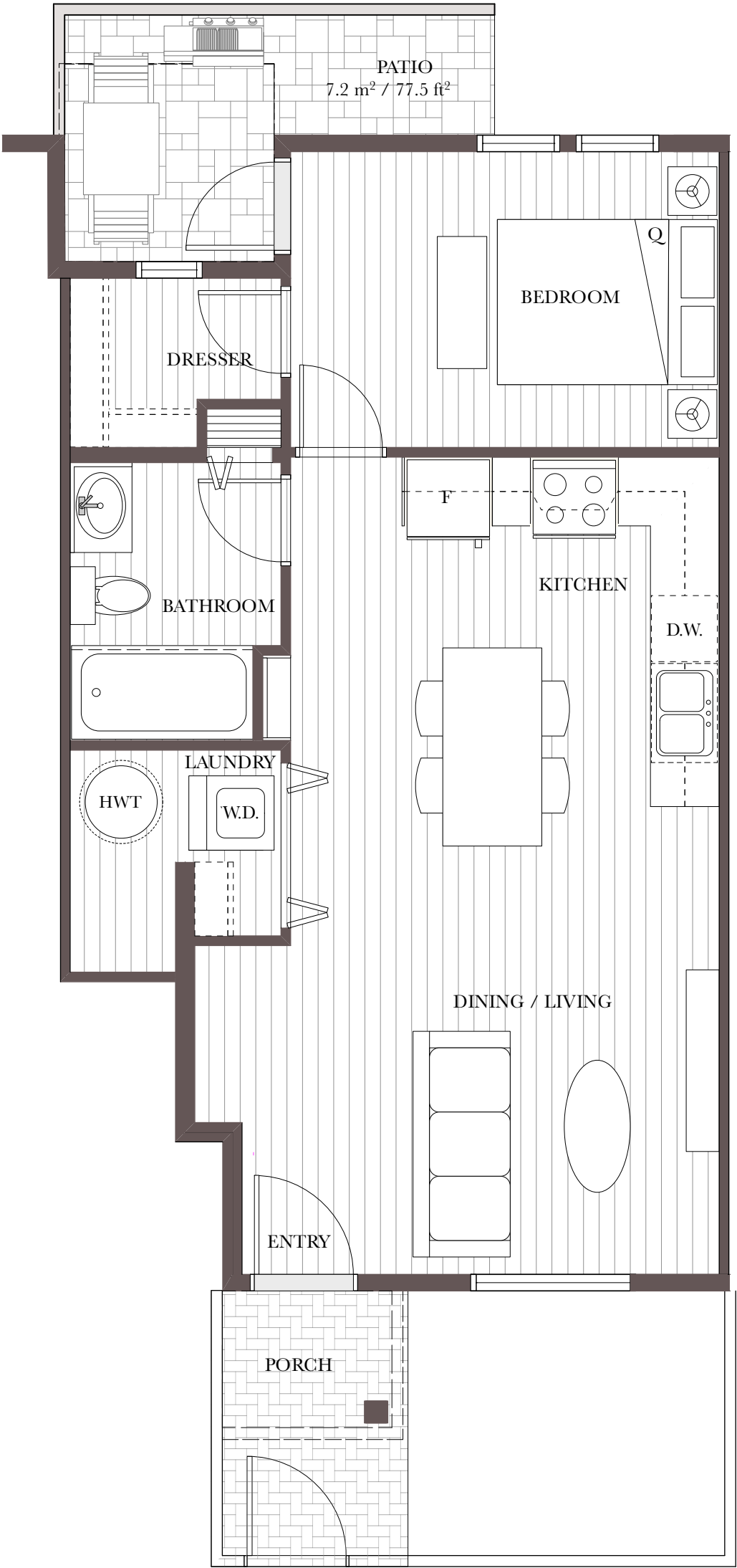
SECOND FLOOR PLAN: BUILDING 6
Three Bedroom

Strata #28*
Suite No. 6-204
TH Type D
UPPER LEVEL
Lower + Upper = 123 m² / 1322 ft²



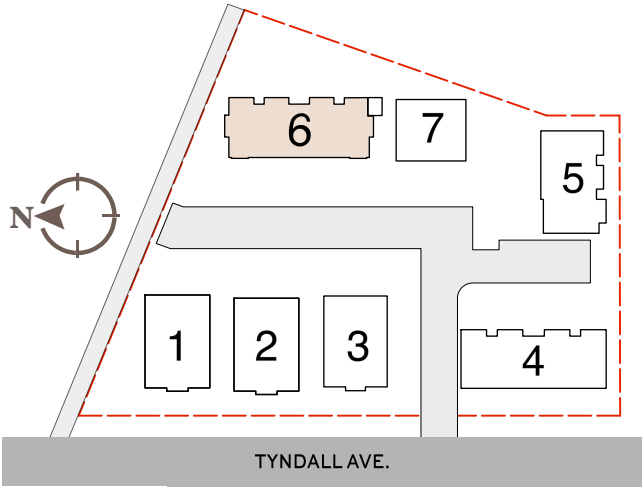
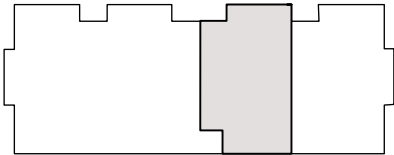
Key Plan

"The developer reserves the right to make modifications. Sizes and dimensions are approximate and may vary with actual strata plans, survey and model. Areas shown are measured to the centreline of: suite separation wall; exterior window glazing; exterior wood studs and exterior walls. This is not an offering for sale. Such an offering must be accompanied by a disclosure statement. E&OE "



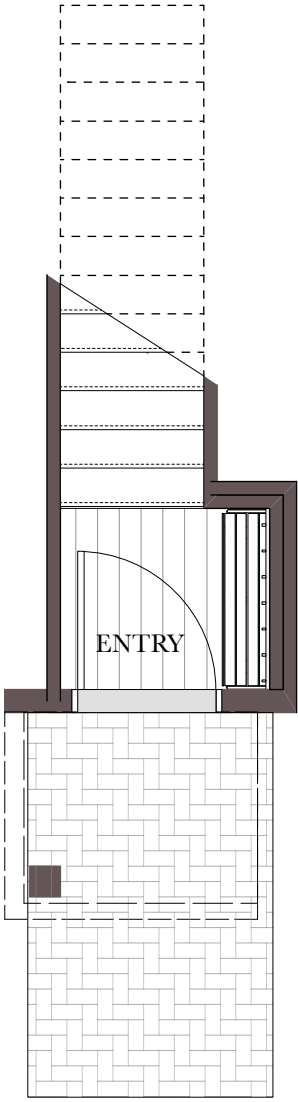
MAIN FLOOR PLAN: BUILDING 6
One Bedroom

Strata #29
Suite No. 6-103
TH Type A
60 m² / 644 ft²



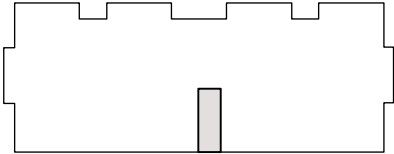
Key Plan

"The developer reserves the right to make modifications. Sizes and dimensions are approximate and may vary with actual strata plans, survey and model. Areas shown are measured to the centreline of: suite separation wall; exterior window glazing; exterior wood studs and exterior walls. This is not an offering for sale. Such an offering must be accompanied by a disclosure statement. E&OE "



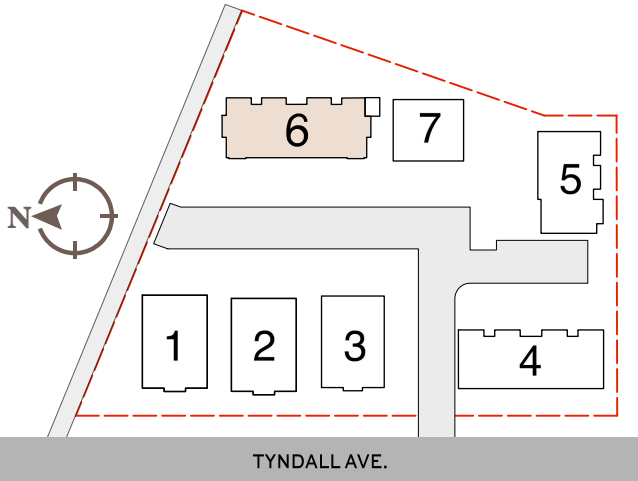
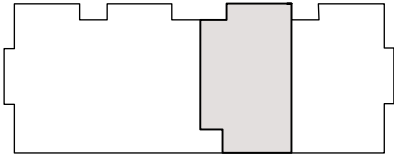
Main Floor Plan: Building 6

Strata #30
Suite No. 6-203
TH Type B
ENTRY LEVEL
2.25 m² / 24.22 ft²



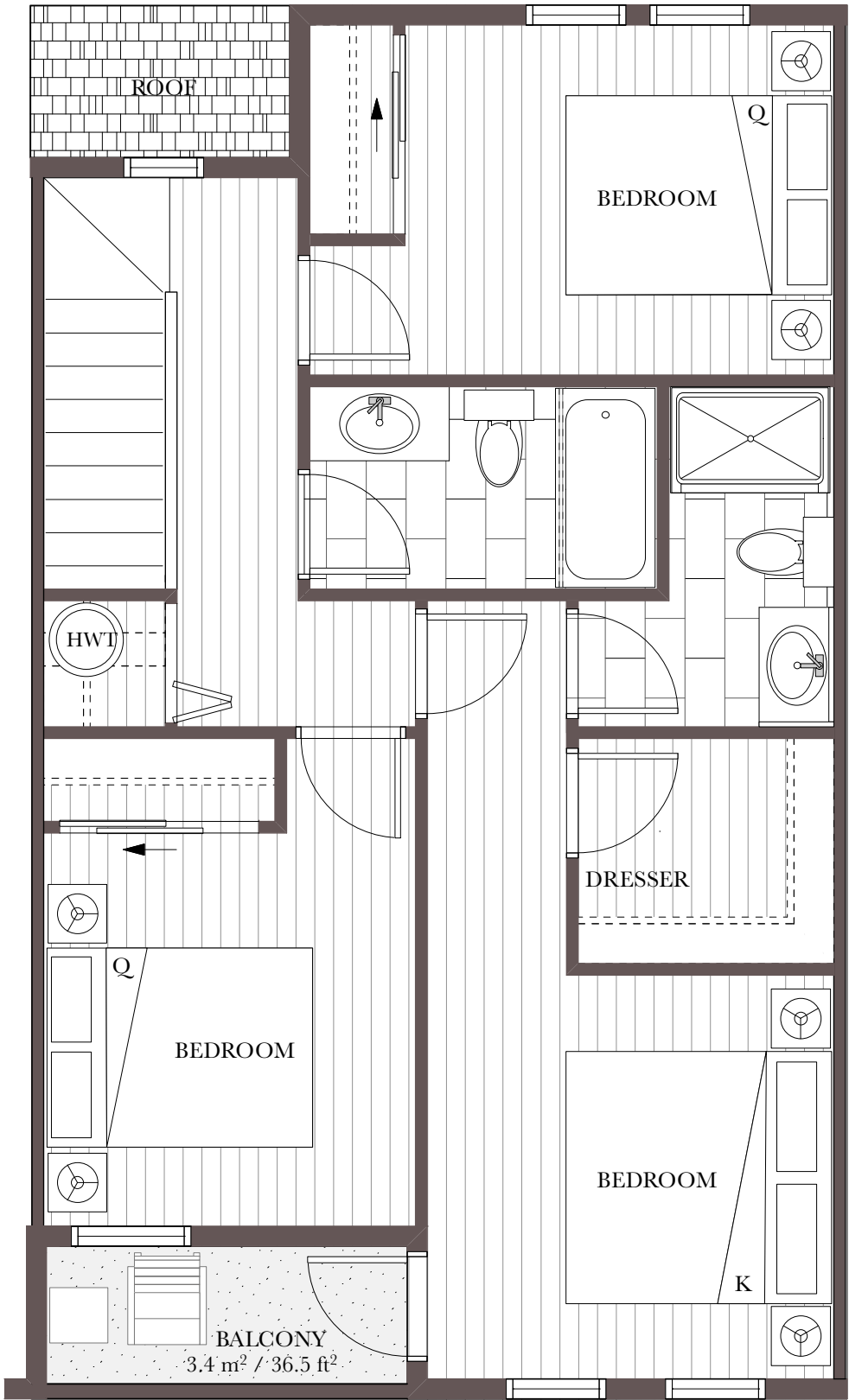
SECOND FLOOR PLAN: BUILDING 6
Three Bedroom

Strata #30
Suite No. 6-203
TH Type B
LOWER LEVEL
Lower + Upper =122 m² / 1320 ft²



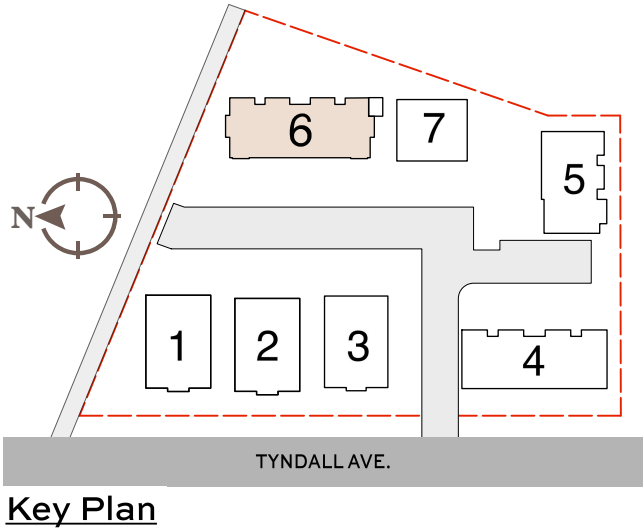
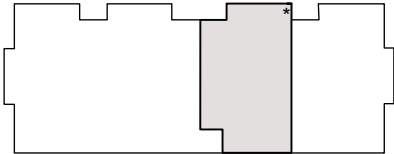
Key Plan

"The developer reserves the right to make modifications. Sizes and dimensions are approximate and may vary with actual strata plans, survey and model. Areas shown are measured to the centreline of: suite separation wall; exterior window glazing; exterior wood studs and exterior walls. This is not an offering for sale. Such an offering must be accompanied by a disclosure statement. E&OE "

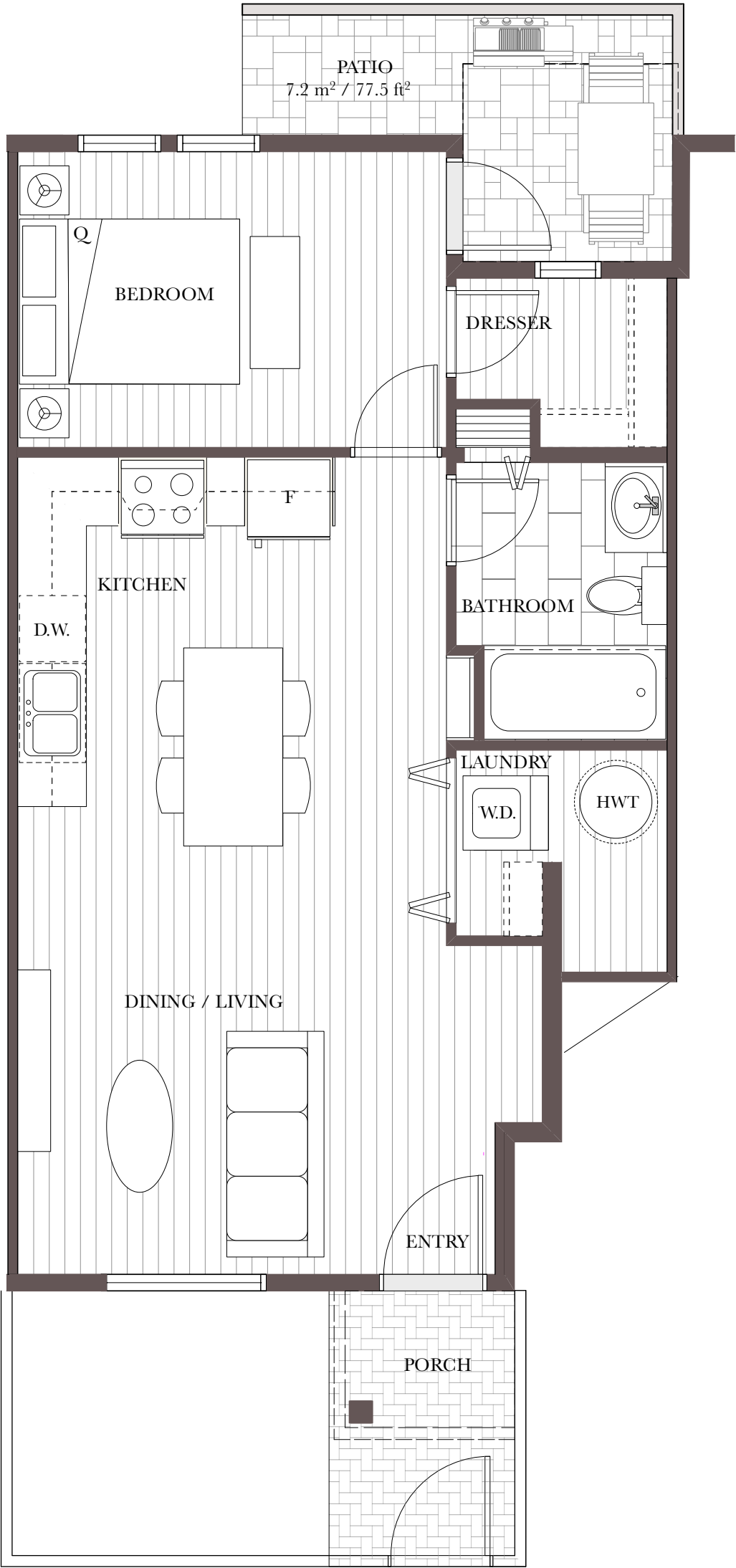


SECOND FLOOR PLAN: BUILDING 6
Three Bedroom

Strata #30*
Suite No. 6-203
TH Type B
UPPER LEVEL
Lower + Upper = 122 m² / 1320 ft²

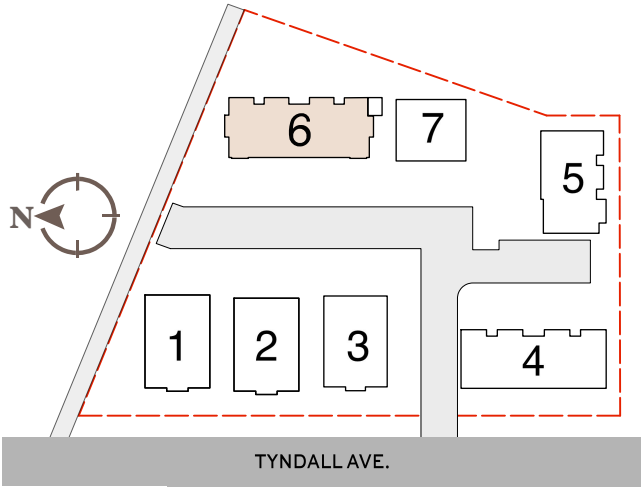
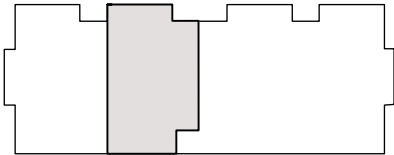


"The developer reserves the right to make modifications. Sizes and dimensions are approximate and may vary with actual strata plans, survey and model. Areas shown are measured to the centreline of: suite separation wall; exterior window glazing; exterior wood studs and exterior walls. This is not an offering for sale. Such an offering must be accompanied by a disclosure statement. E&OE "



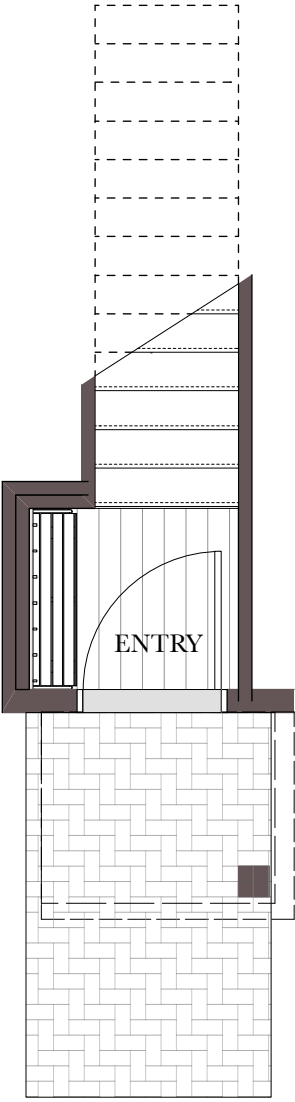
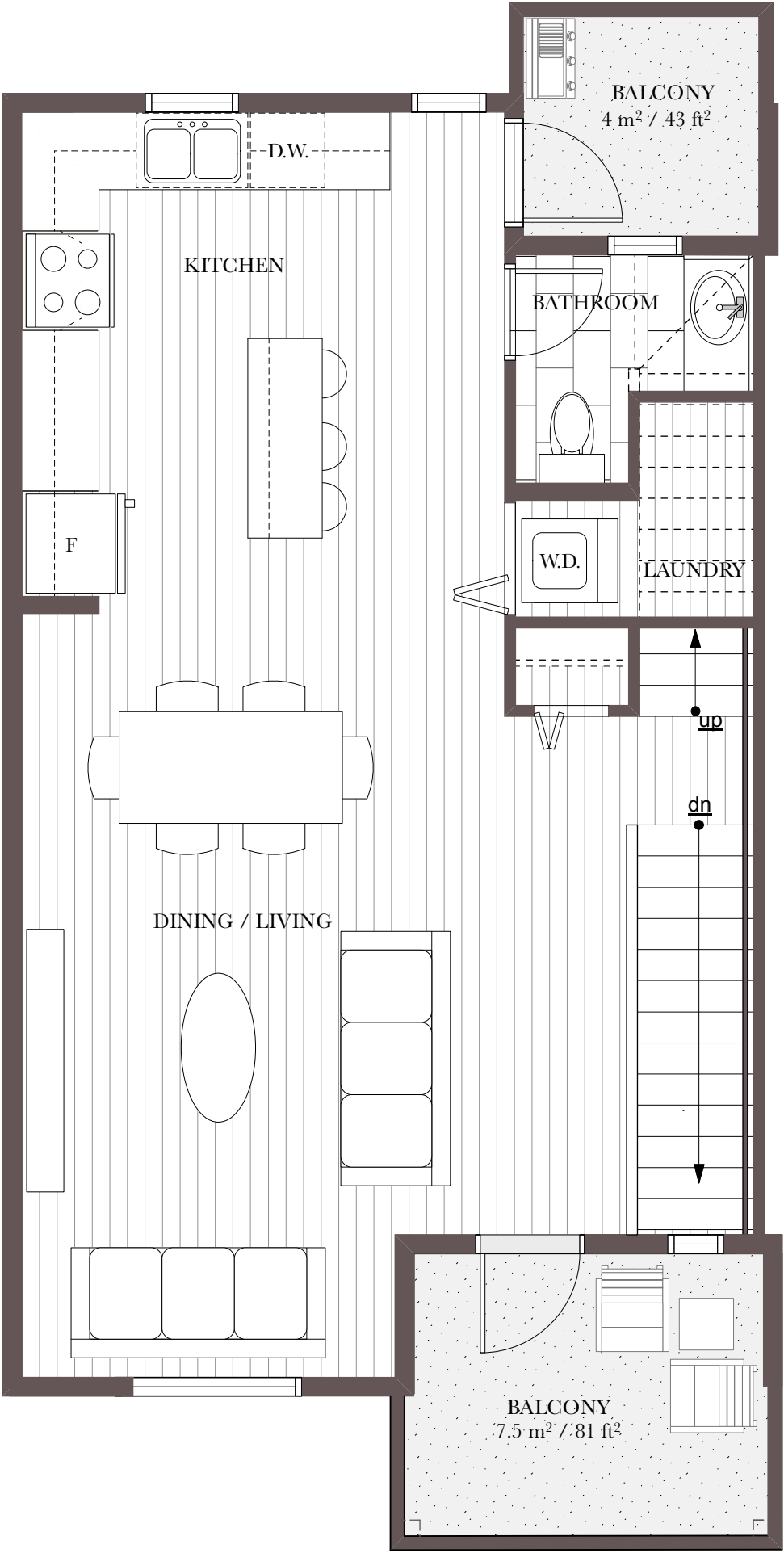
MAIN FLOOR PLAN: BUILDING 6
One Bedroom

Strata #31
Suite No. 6-102
TH Type A
60 m² / 644 ft²



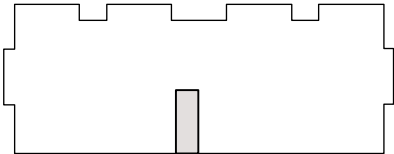
Key Plan

"The developer reserves the right to make modifications. Sizes and dimensions are approximate and may vary with actual strata plans, survey and model. Areas shown are measured to the centreline of: suite separation wall; exterior window glazing; exterior wood studs and exterior walls. This is not an offering for sale. Such an offering must be accompanied by a disclosure statement. E&OE "



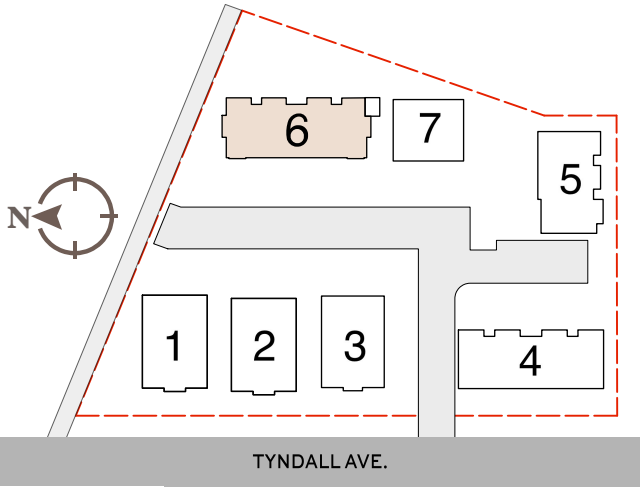
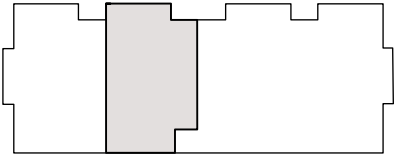
Main Floor Plan: Building 6

Strata #32
Suite No. 6-202
TH Type B
ENTRY LEVEL
2.25 m² / 24.22 ft²



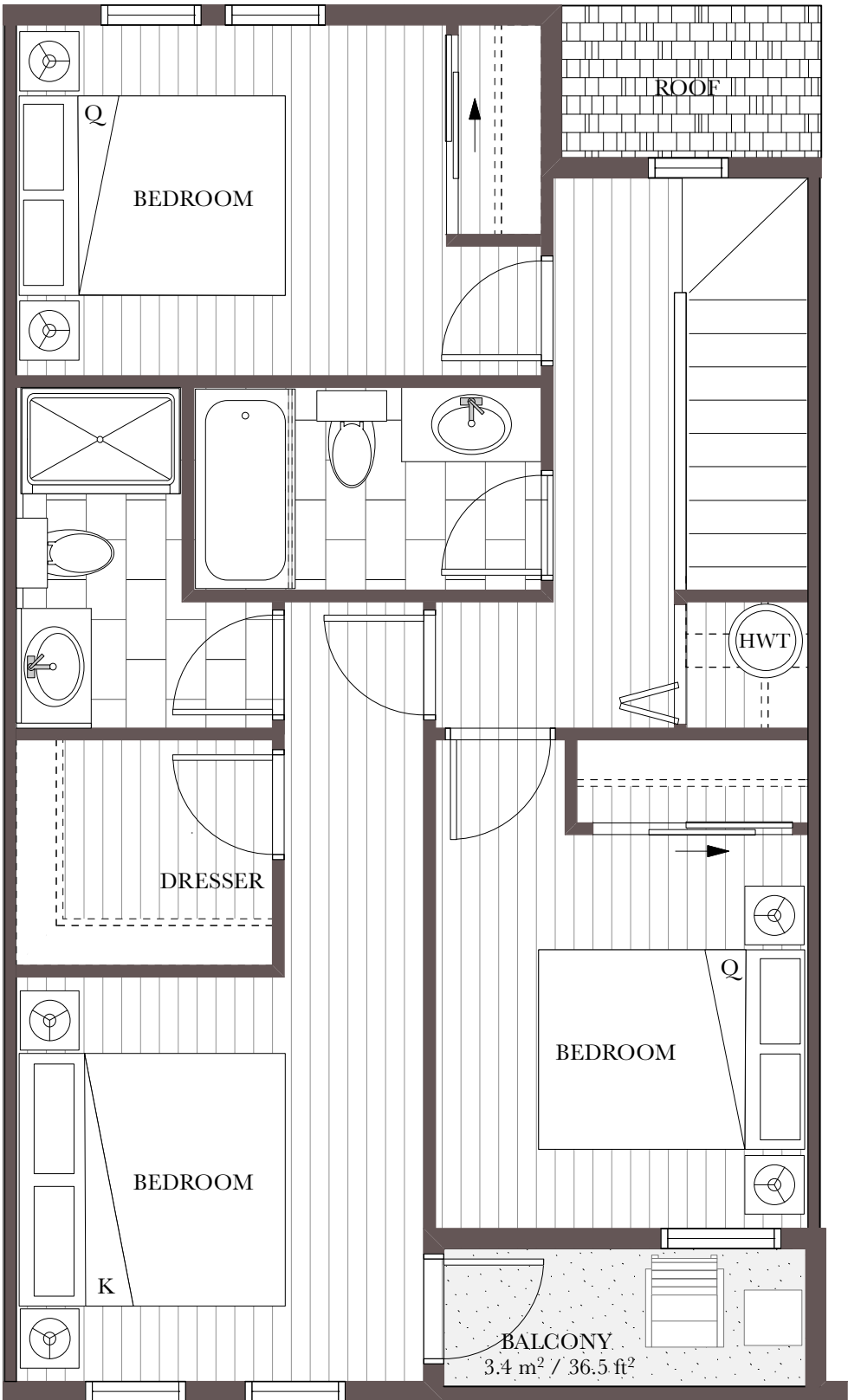
SECOND FLOOR PLAN: BUILDING 6
Three Bedroom

Strata #32
Suite No. 6-202
TH Type B
LOWER LEVEL
Lower + Upper =122 m² / 1320 ft²



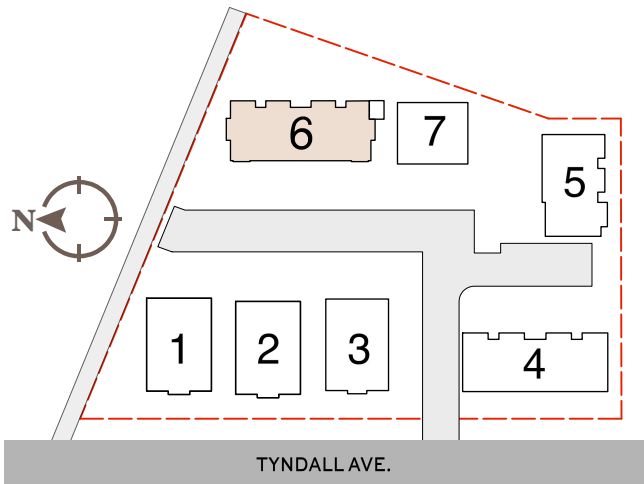
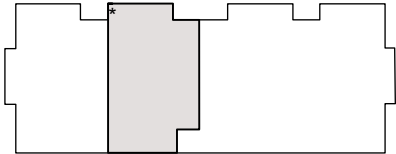
Key Plan

"The developer reserves the right to make modifications. Sizes and dimensions are approximate and may vary with actual strata plans, survey and model. Areas shown are measured to the centreline of: suite separation wall; exterior window glazing; exterior wood studs and exterior walls. This is not an offering for sale. Such an offering must be accompanied by a disclosure statement. E&OE "



SECOND FLOOR PLAN: BUILDING 6
Three Bedroom

Strata #32*
Suite No. 6-202
TH Type B
UPPER LEVEL
Lower + Upper = 122 m² / 1320 ft²



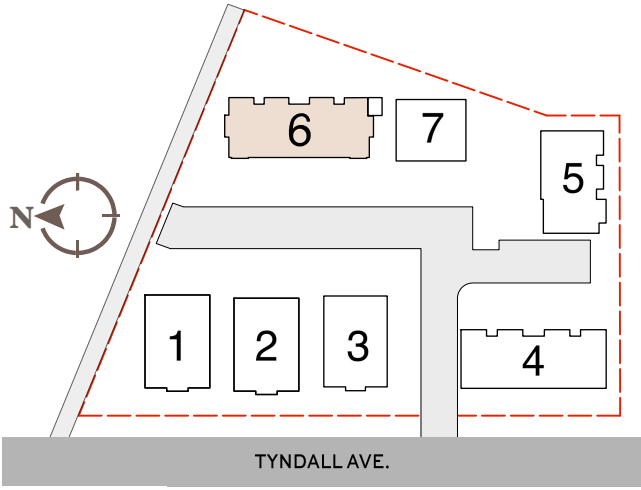
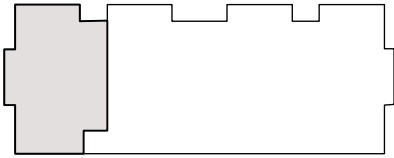
Key Plan

"The developer reserves the right to make modifications. Sizes and dimensions are approximate and may vary with actual strata plans, survey and model. Areas shown are measured to the centreline of: suite separation wall; exterior window glazing; exterior wood studs and exterior walls. This is not an offering for sale. Such an offering must be accompanied by a disclosure statement. E&OE "



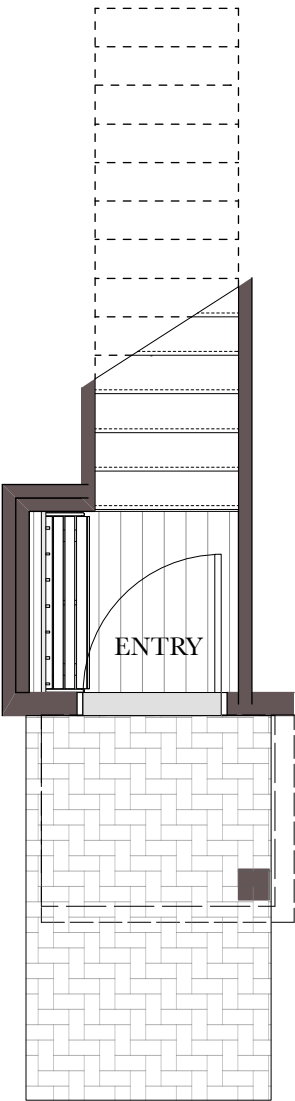
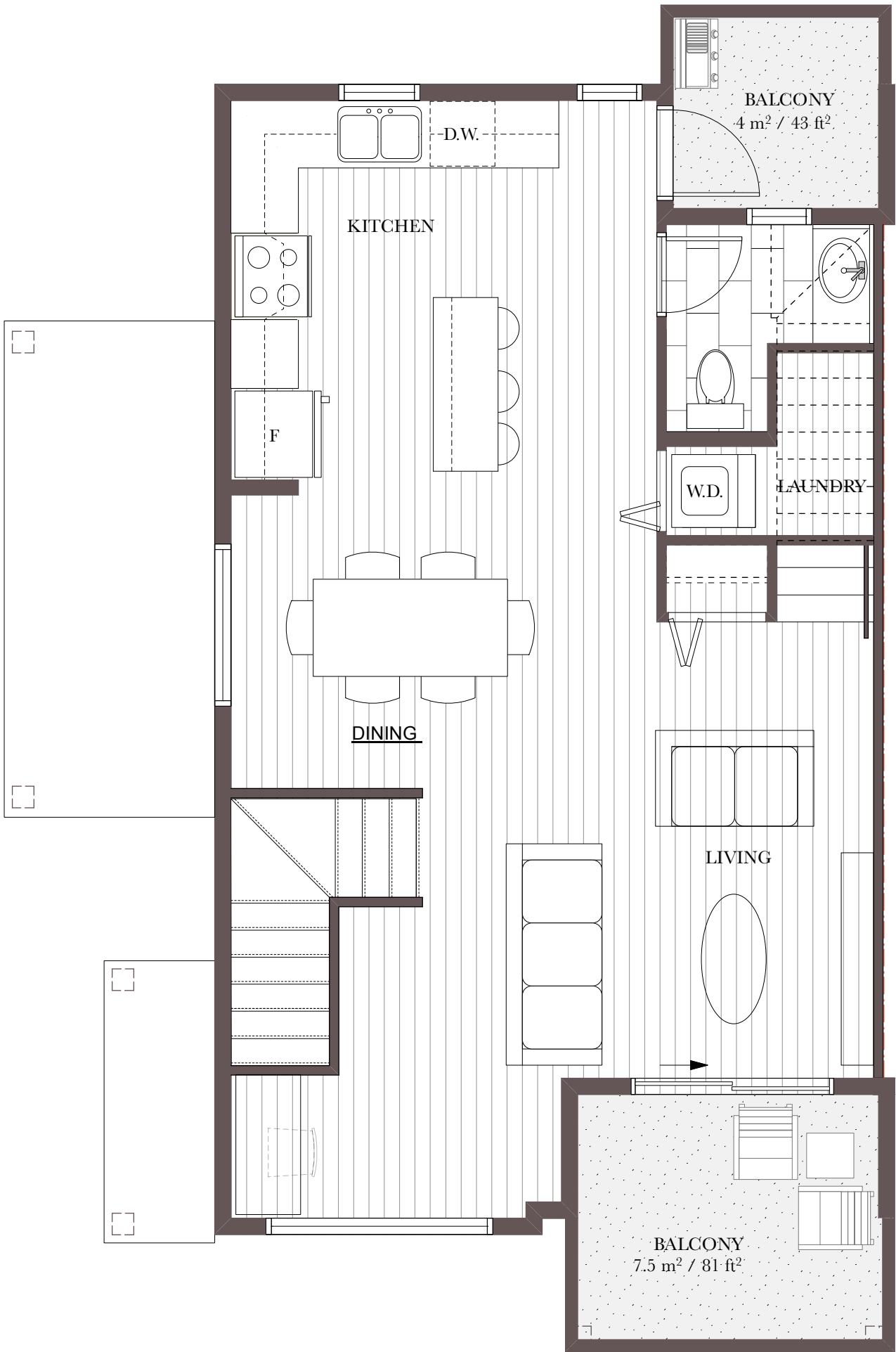
MAIN FLOOR PLAN: BUILDING 6
One Bedroom

Strata #33
Suite No. 6-101
TH Type C
65 m² / 696 ft²



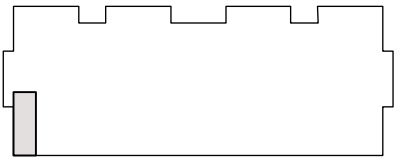
Key Plan

"The developer reserves the right to make modifications. Sizes and dimensions are approximate and may vary with actual strata plans, survey and model. Areas shown are measured to the centreline of: suite separation wall; exterior window glazing; exterior wood studs and exterior walls. This is not an offering for sale. Such an offering must be accompanied by a disclosure statement. E&OE "



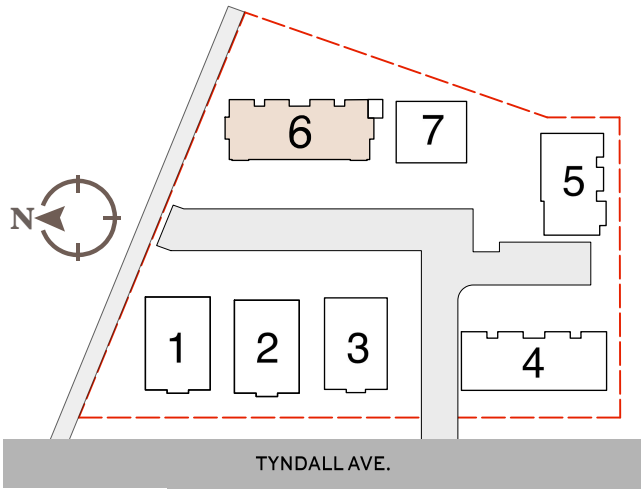
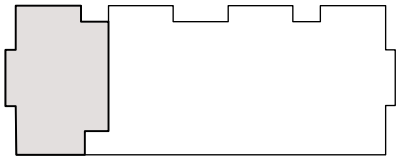
Main Floor Plan: Building 6

Strata #34
Suite No. 6-201
TH Type B
ENTRY LEVEL
2.25 m² / 24.22 ft²



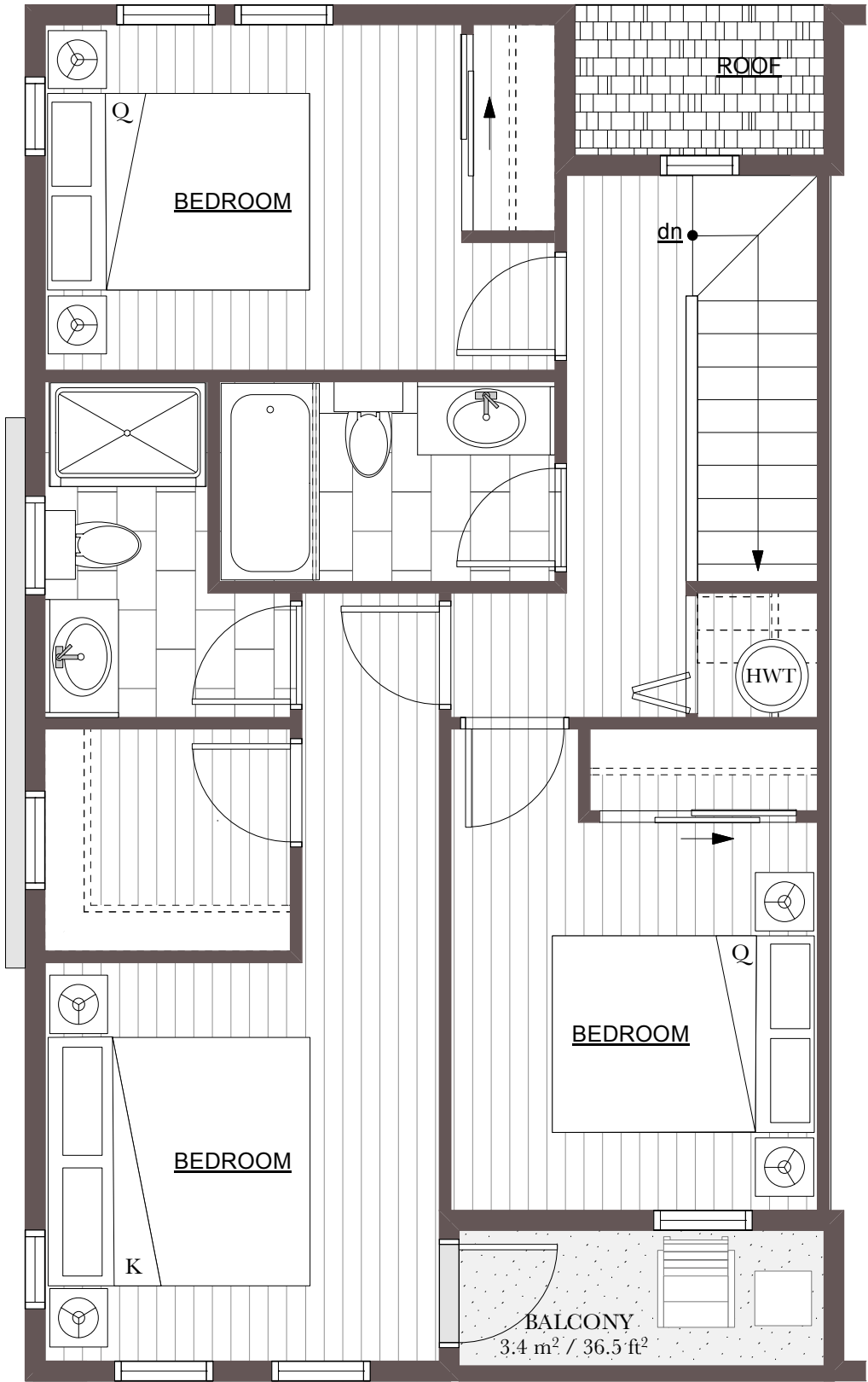
SECOND FLOOR PLAN: BUILDING 6
Three Bedroom

Strata #34
Suite No. 6-201
TH Type D
LOWER LEVEL
Lower + Upper =123 m² / 1322 ft²



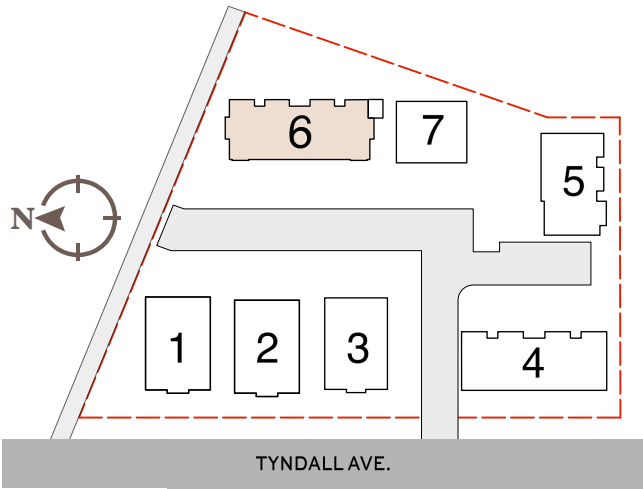
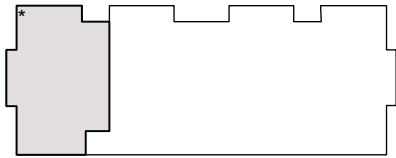
Key Plan

"The developer reserves the right to make modifications. Sizes and dimensions are approximate and may vary with actual strata plans, survey and model. Areas shown are measured to the centreline of: suite separation wall; exterior window glazing; exterior wood studs and exterior walls. This is not an offering for sale. Such an offering must be accompanied by a disclosure statement. E&OE "



SECOND FLOOR PLAN: BUILDING 6
Three Bedroom

Strata #34*
Suite No. 6-201
TH Type D
UPPER LEVEL
Lower + Upper = 123 m² / 1322 ft²



Key Plan

"The developer reserves the right to make modifications. Sizes and dimensions are approximate and may vary with actual strata plans, survey and model. Areas shown are measured to the centreline of: suite separation wall; exterior window glazing; exterior wood studs and exterior walls. This is not an offering for sale. Such an offering must be accompanied by a disclosure statement. E&OE "