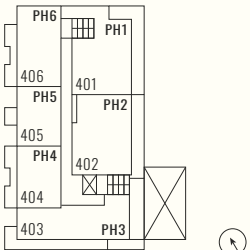
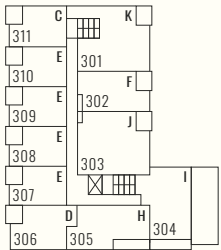
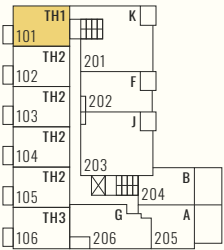
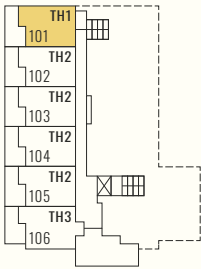
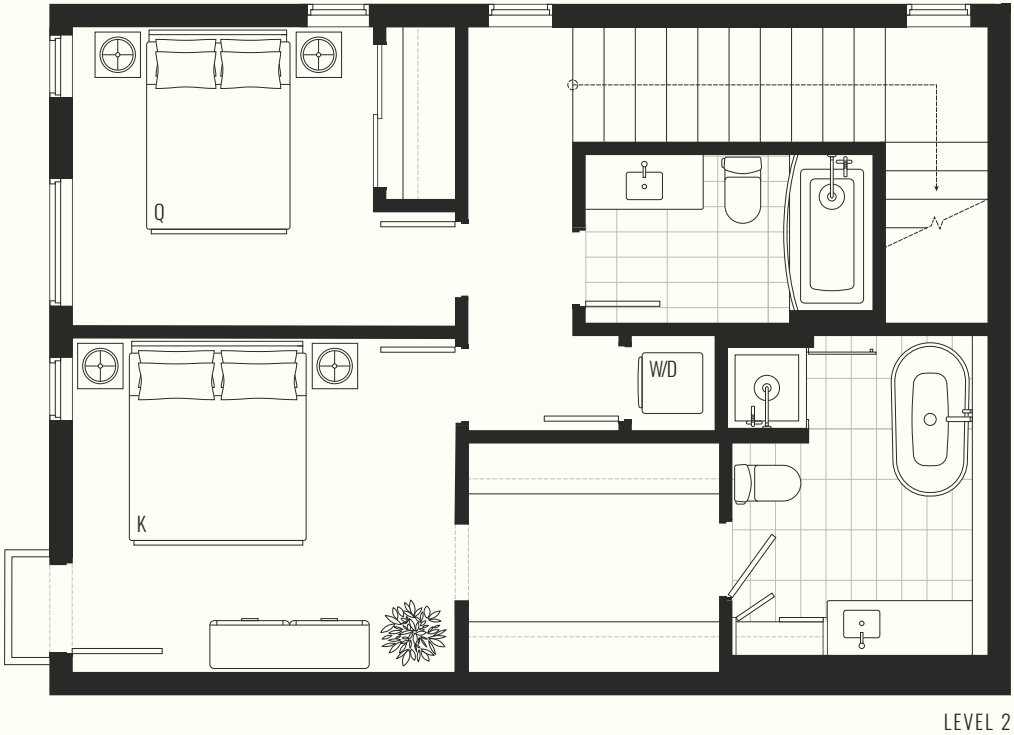
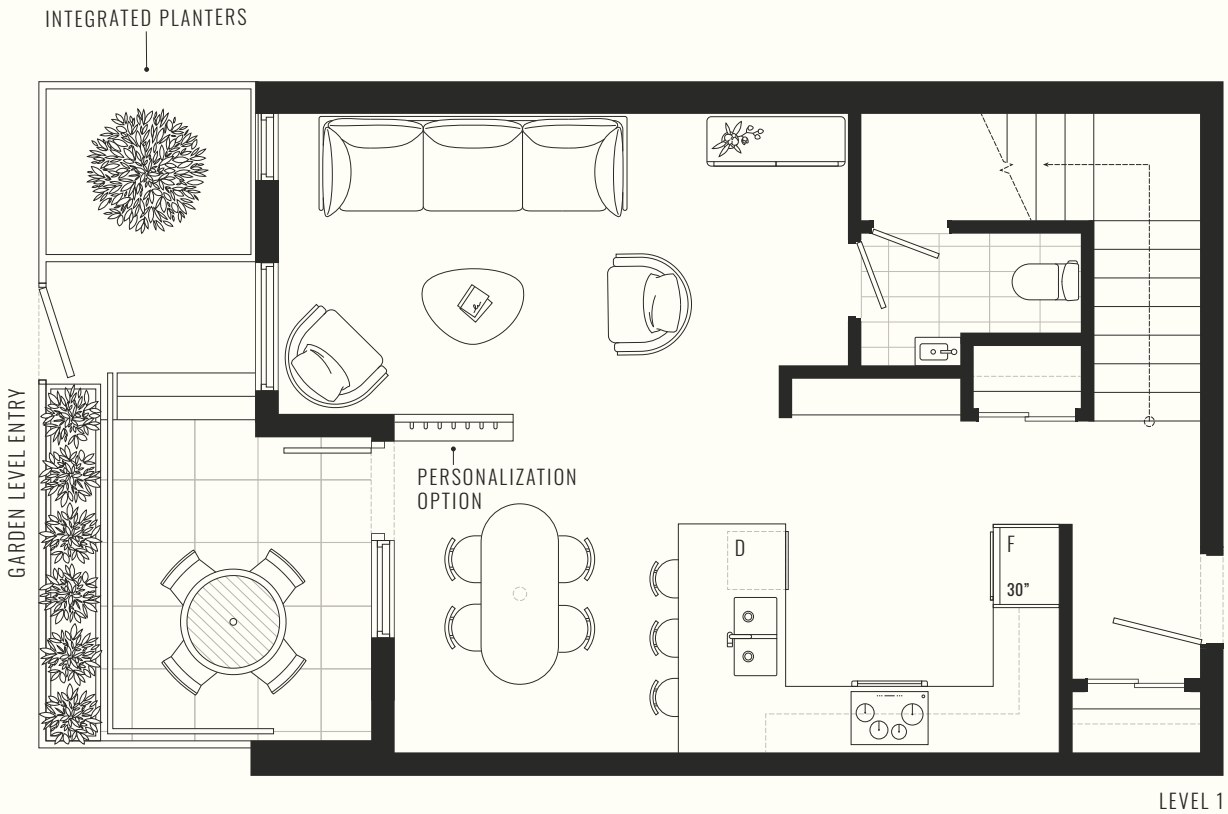


TOTAL
1,460 SF

UPPER INTERIOR
689 SF

LOWER INTERIOR
634 SF

EXTERIOR
137 SF



TH2

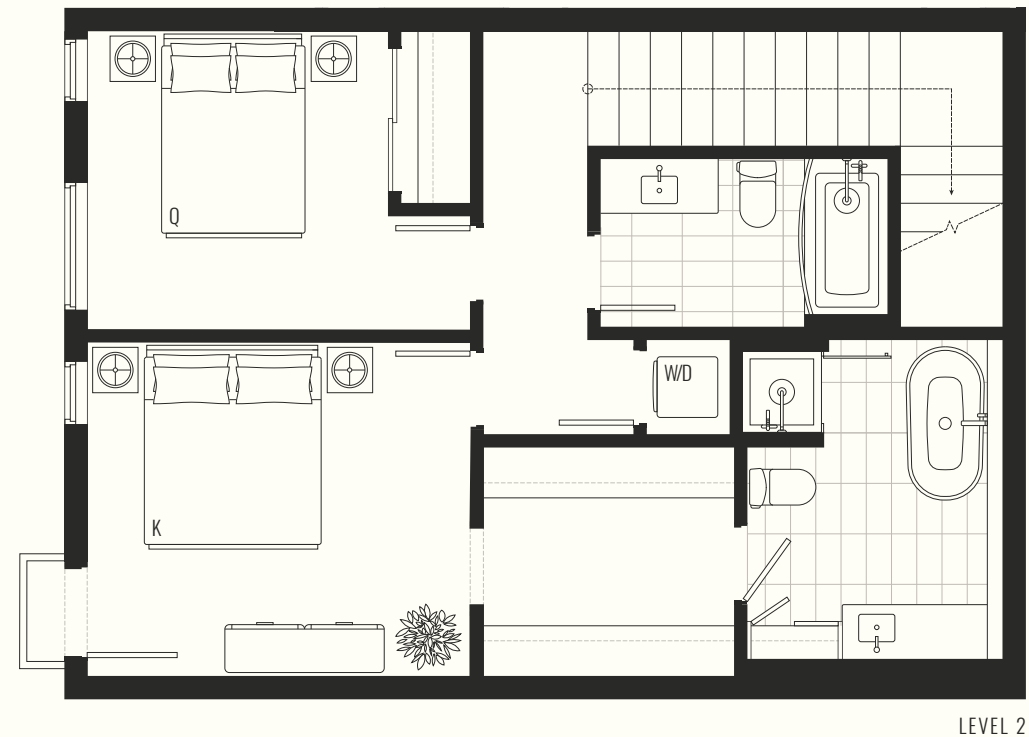
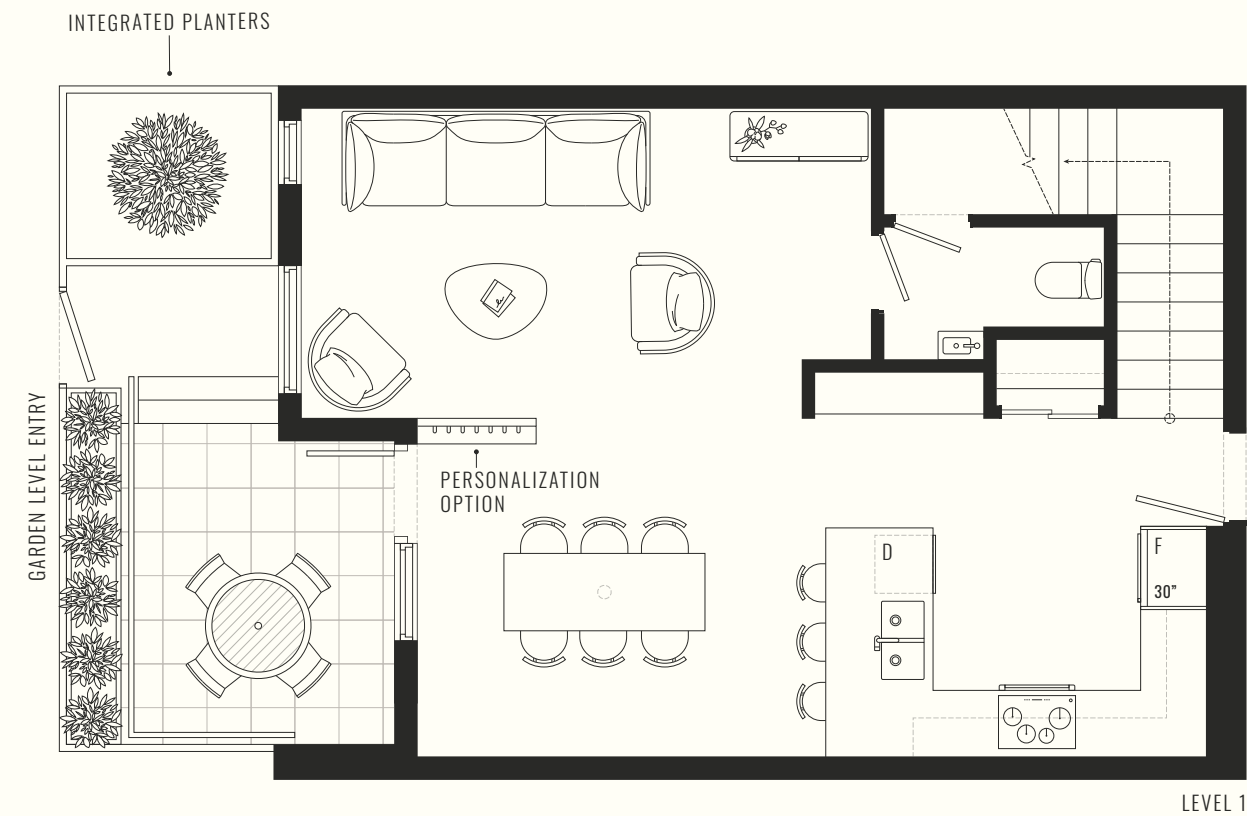
2 Bedroom
2.5 Bathroom

TOTAL
1,439 SF

UPPER INTERIOR
671 SF

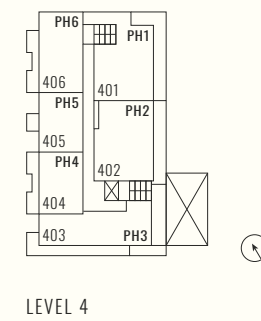
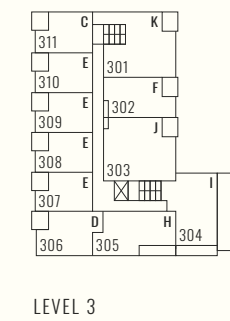
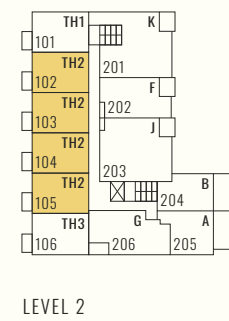
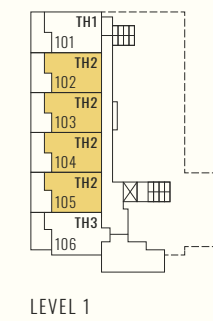
LOWER INTERIOR
631 SF

EXTERIOR
137 SF



ARYZE

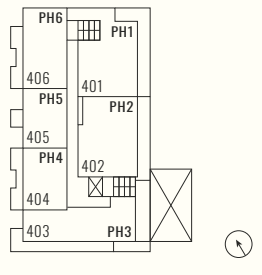
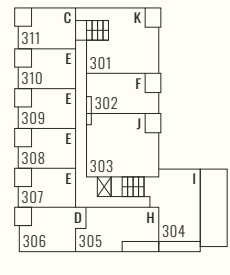
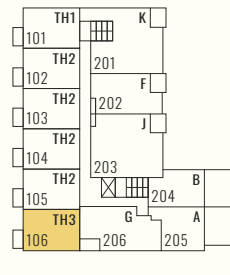
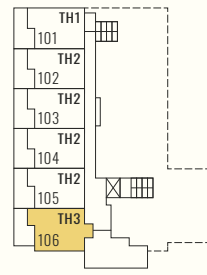
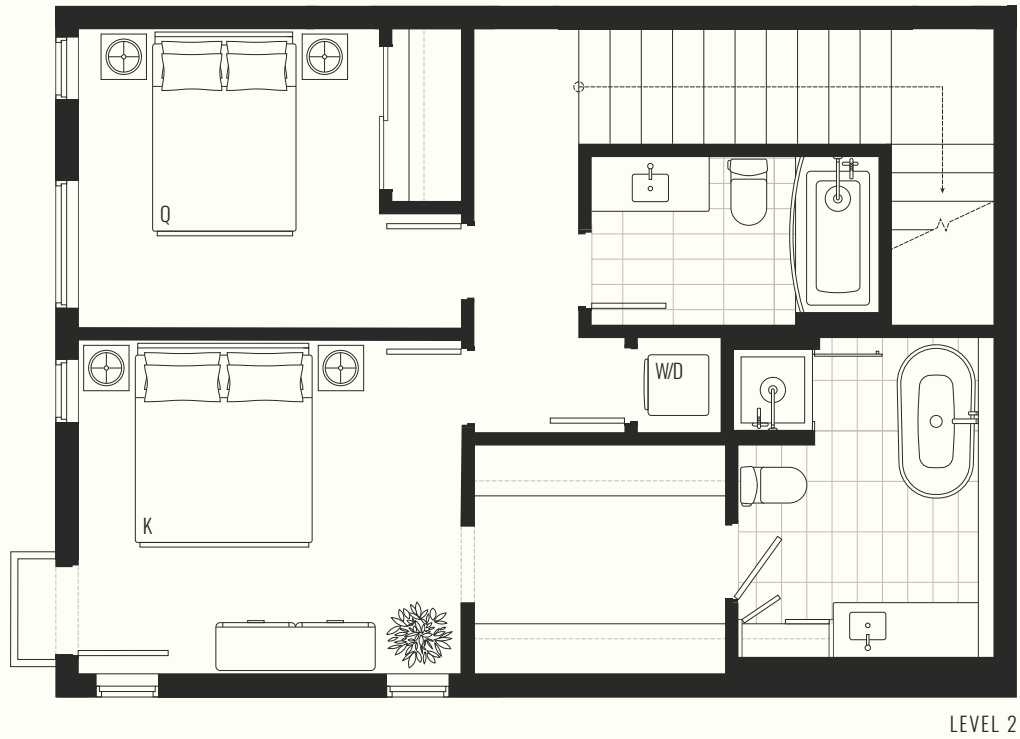
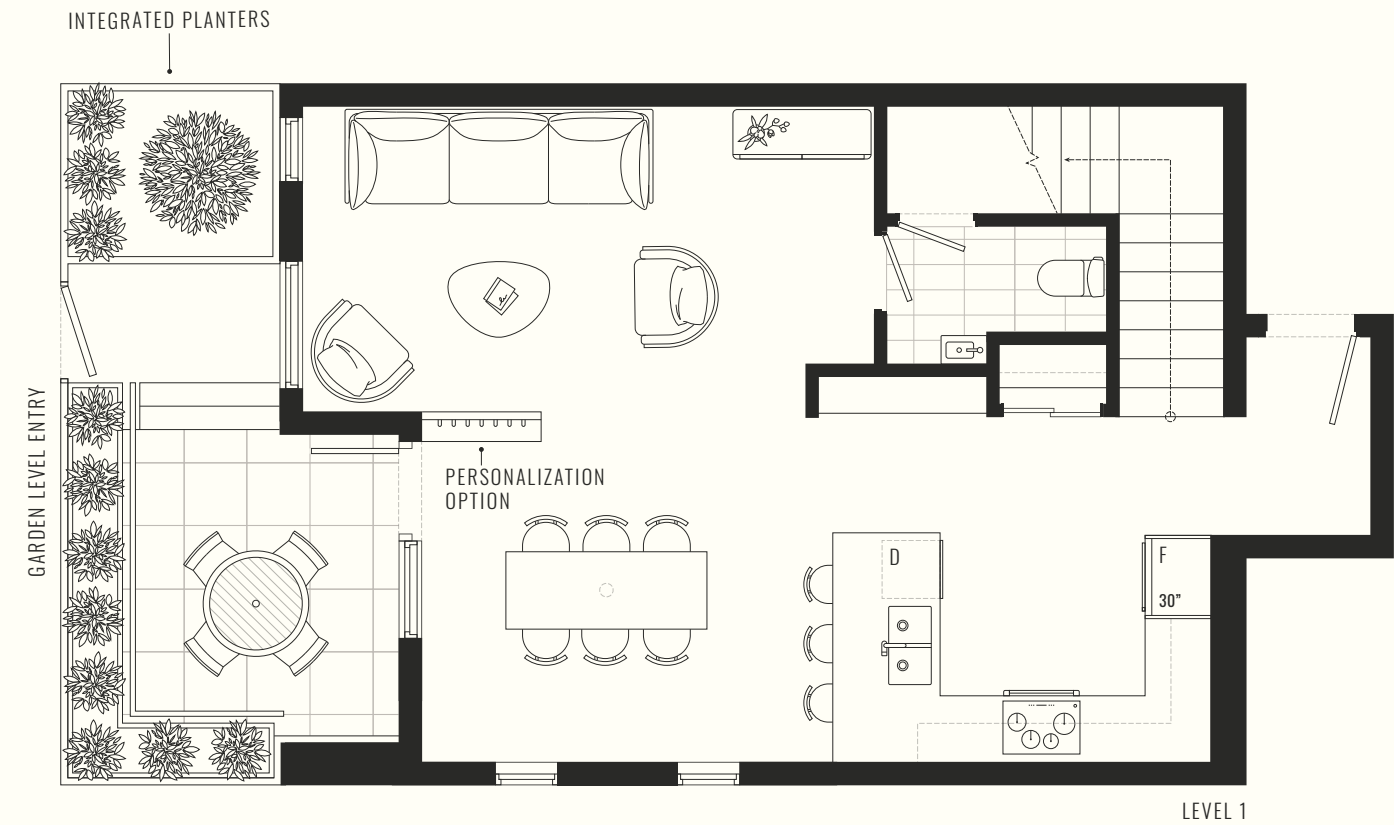
In our continuing effort to improve and maintain the highest standard, the developer reserves the right to modify or change plans, specifications, features and prices without notice. All dimensions and sizes are approximate and are based on Architectural measurements. Please refer to disclosure statement for specific offering details. E.&O.E.



Summerhouse

TH3

2 Bedroom
2.5 Bathroom



In our continuing effort to improve and maintain the highest standard, the developer reserves the right to modify or change plans, specifications, features and prices without notice. All dimensions and sizes are approximate and are based on Architectural measurements. Please refer to disclosure statement for specific offering details. E.&O.E.

ARYZE

Summerhouse