

# Kindred

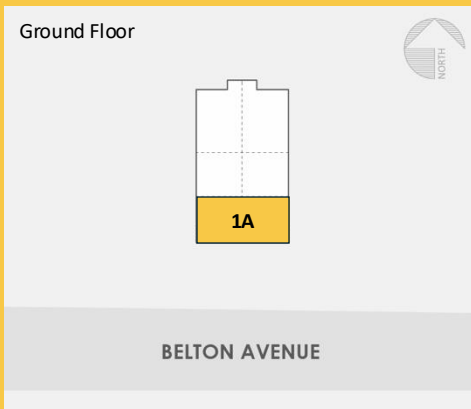
## 1A

**2 bedroom**  
**2 bathroom**  
**+ Patio**  
**+ Storage locker (31 sf)**  
**+ Adaptable to accessibility needs**

**Interior:** 753 sf

**Patio:** 75 sf

**Total:** 828 sf



# Kindred

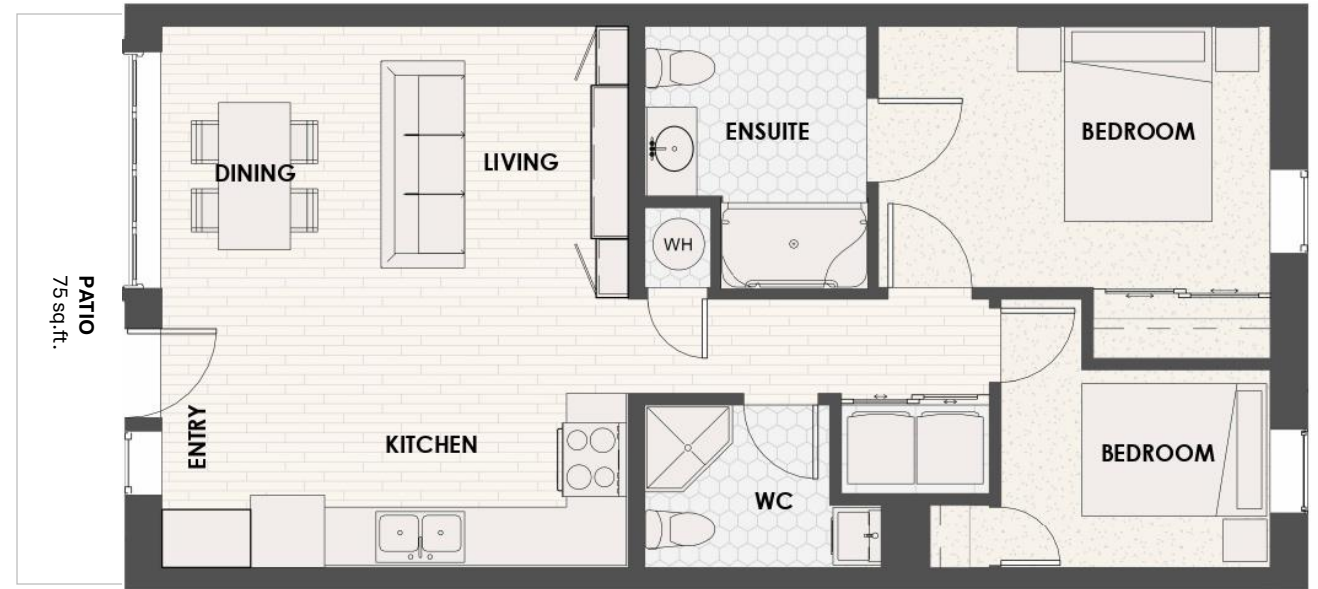
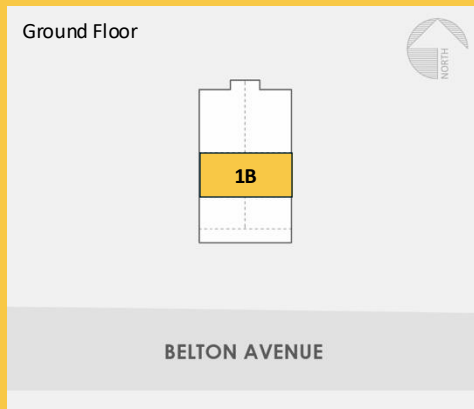
## 1B

**2 bedroom**  
**2 bathroom**  
**+ Patio**  
**+ Storage locker (31 sf)**  
**+ Adaptable to accessibility needs**

**Interior:** 743 sf

**Patio:** 75 sf

**Total:** 818 sf



# Kindred

## 2A & 2B

**3 bedroom**  
**2 bathroom**  
**+ Den & Recreation Room**  
**+ Porch & Patio**  
**+ Storage locker (37 sf)**

**Interior:** 1,109 sf  
**Porch & Patio:** 193 sf  
**Total:** 1,302 sf



Middle Floor



BELTON AVENUE

Dimensions, sizes, specifications, layouts and materials are approximate only and subject to change without notice. E.&O.E.

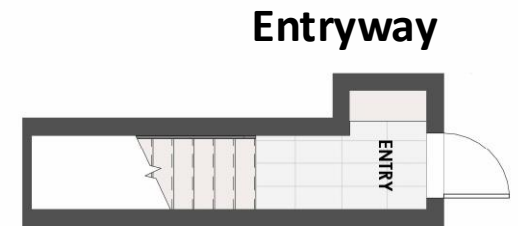
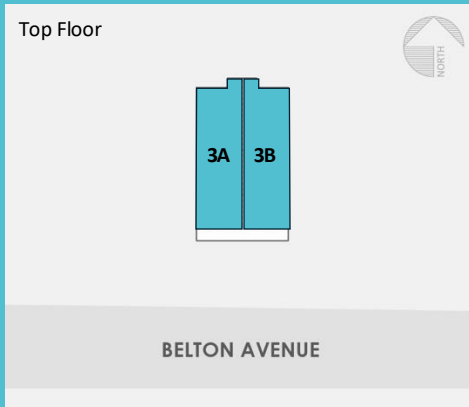
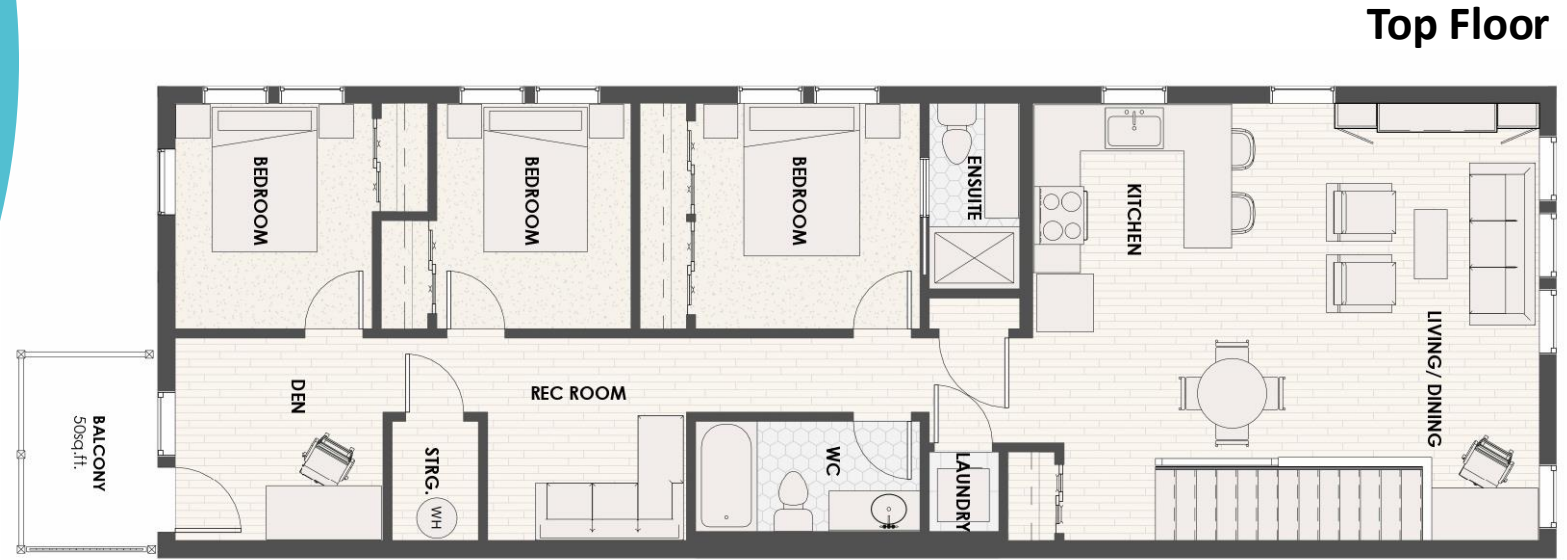


# Kindred

## 3A & 3B

**3 bedroom**  
**2 bathroom**  
**+ Den & Recreation Room**  
**+ Balcony**  
**+ Storage locker (37 sf)**

**Interior:** 1,238 sf  
**Balcony:** 50 sf  
**Total:** 1,288 sf



Dimensions, sizes, specifications, layouts and materials are approximate only and subject to change without notice. E.&O.E.