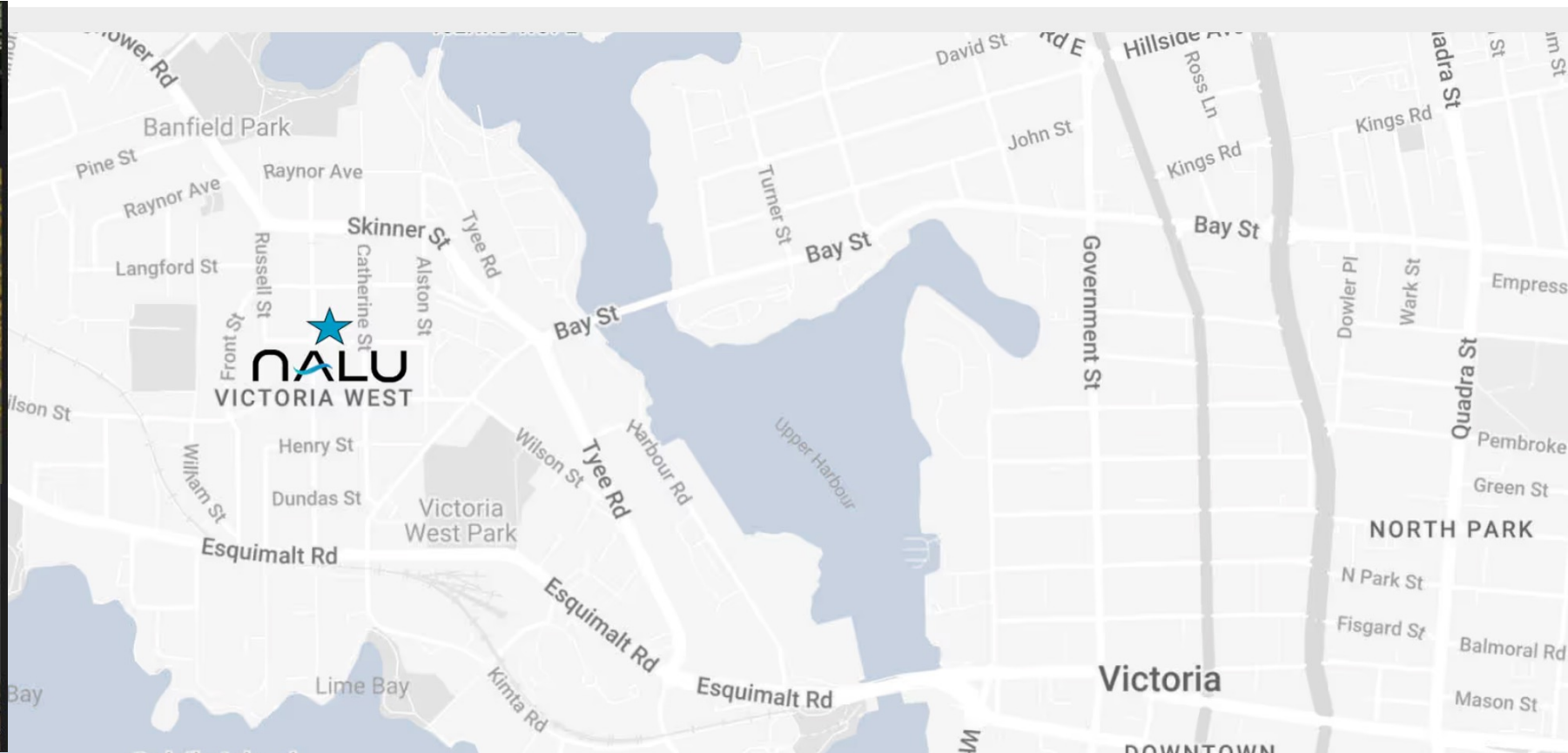


nALU



Where West Coast architecture and the simplicity of Scandinavian design meets community-minded living. Set in the heart of Vic West, just minutes from downtown Victoria, NALU offers bright, thoughtful homes surrounded by greenery and shared space. A place to slow down, connect, and live with purpose.



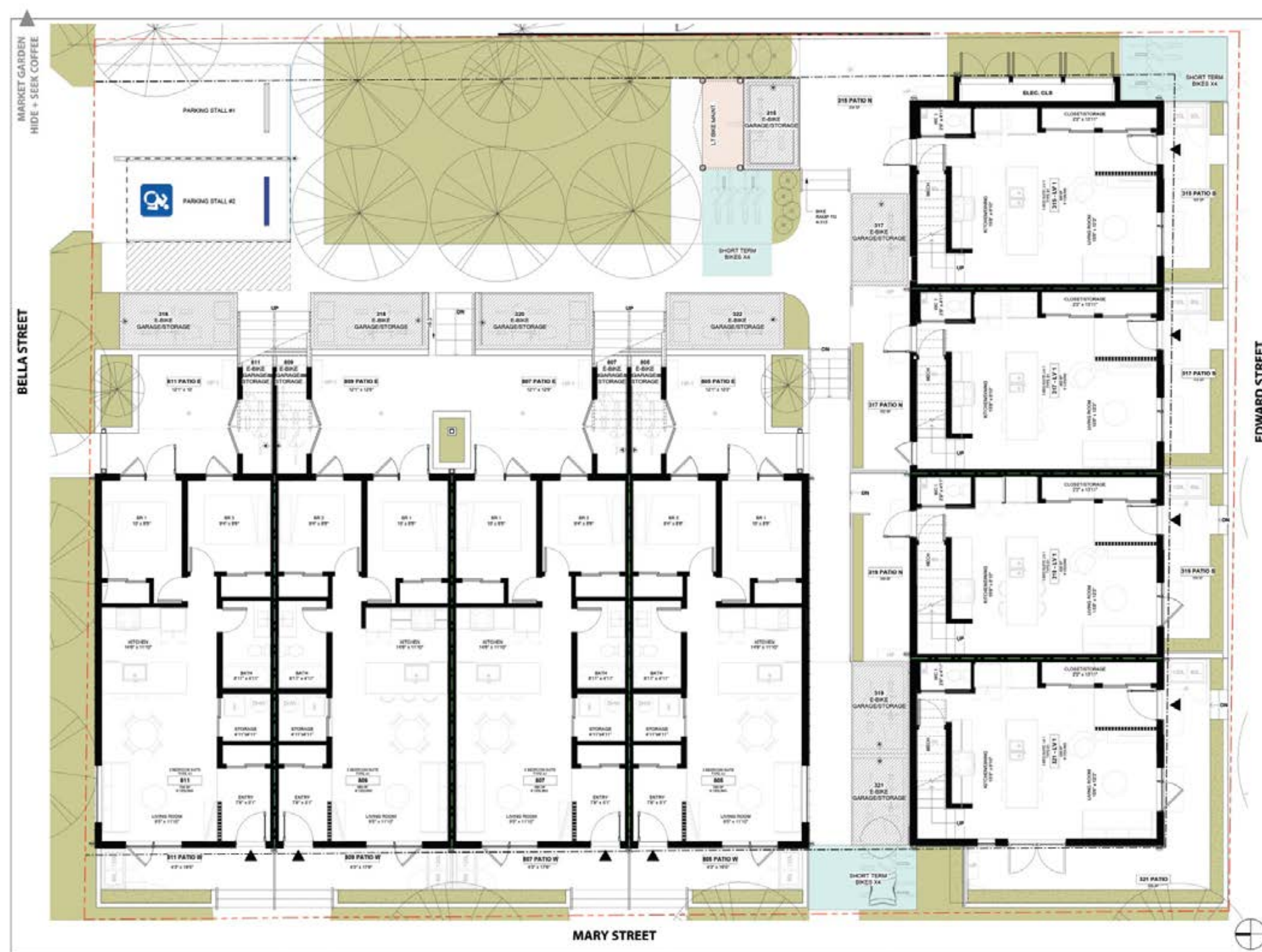
NALU SITE PLAN

Welcome to NALU @ Vic West -
12 homes designed with
intention.

Where West Coast architecture and
the simplicity of Scandinavian
design meets community-minded
living. Set in the heart of Vic West,
just minutes from downtown
Victoria, NALU offers bright,
thoughtful homes surrounded by
greenery and shared space. A place
to slow down, connect, and live with
purpose.

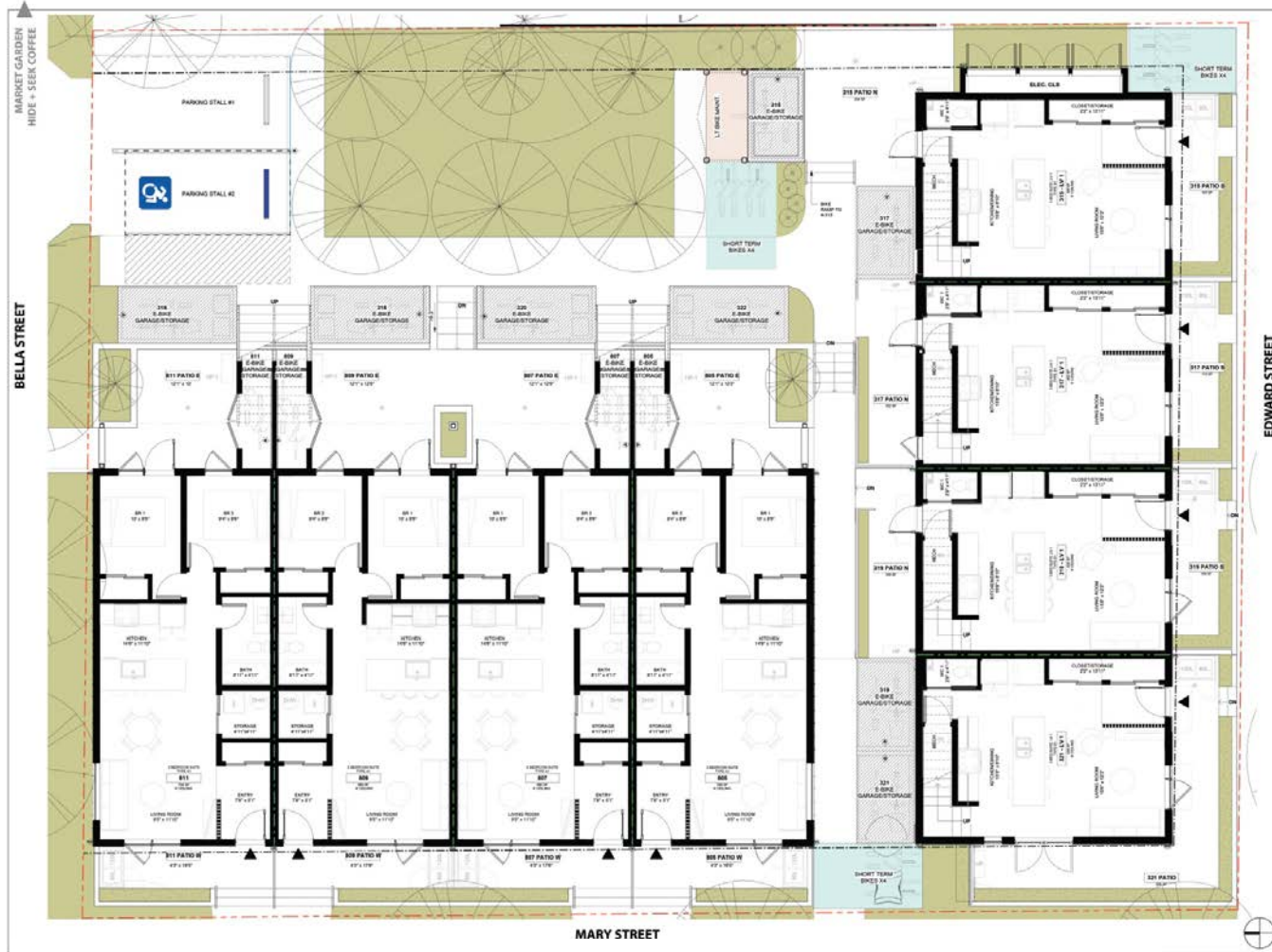
Three distinct homes. One
connected community.

Each NALU townhome was designed
with its own character and
perspective from quiet garden
outlooks to vibrant streetfronts all
tied together by the same attention
to detail, livability, and design
integrity.



THE BELLA

Upper two-level homes accessed off the Bella Street courtyard spanning the second and third level - 3 bedroom + Flex, 2.5 bathroom with bright, open interiors designed for flow and flexibility.



THE EDWARD

Confident and connected on Edward Street, The Edward is NALU's signature residence a 3 bed + flex, 2.5 bath, three-level home with stunning panoramic views.



THE MARY

Quiet and grounded along Mary Street, The Mary offers an intimate, garden-level lifestyle - a 2 bedroom, 1 bathroom home designed for ease and connection. Fronting Mary Street along the ground floor for one level living.





The MARY

Situated along Mary Street, these 4 ground level suites provide the perfect space for one level living that's efficient, warm and welcoming. A private entry off of your front West-Facing patio opens into your open concept kitchen and living area. High ceilings and large windows allow natural light to pour in. Two bedrooms are tucked away in the back, with one opening up to a spacious rear garden patio to enjoy the morning light with a cup of coffee. Perfect for expanding families, young professionals, or downsizers alike.

Bedrooms	2
----------	---

Bathroom	1 full
----------	--------

Sq ft total	894 to 919
-------------	------------

Sq ft Interior space	695 to 706
----------------------	------------

Sq ft exterior space	190 to 224
----------------------	------------

The MARY



Total: 894 sf
 Interior: 704 sf
 Exterior: 190 sf
 Patios: 70 sf (front) 120 sf (back)



Total: 919 sf
 Interior: 695 sf
 Exterior: 224 sf
 Patios: 74 sf (front) 150 sf (back)



Total: 919 sf
 Interior: 695 sf
 Exterior: 224 sf
 Patios: 74 sf (front) 150 sf (back)



Total: 896 sf
 Interior: 706 sf
 Exterior: 190 sf
 Patios: 70 sf (front) 120 sf (back)

Bedrooms	2
Bathroom	1 full
Sq ft total	894 to 919
Sq ft Interior space	695 to 706
Sq ft exterior space	190 to 224

- Single-level living with private front and back patios.
- Seamless access to the shared courtyard.
- East-west orientation for all-day natural light.
- Private and secure e-bike garage with plug-in and storage.



The BELLA

The one-block long (or short, really) Bella Street meanders through to the Catherine Street small urban village and sets the stage for this family-style stacked townhouse. A unique entrance off the Bella Street courtyard, The Bella is bright and versatile - a 3 bed + flex, 2.5 bath home that blends open living with upper-level views of serenity. With all three bedrooms on the top floor, the cathedral ceilings give a spacious and soaring elegance. Plus, stunning sunset views await from the primary's upper balcony.

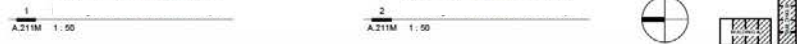


Bedrooms	3 plus Flex
Bathroom	2 Full, 1 Half
Sq ft total	1454 to 1472
Sq ft Interior space	1312 to 1332
Sq ft exterior space	140 to 143

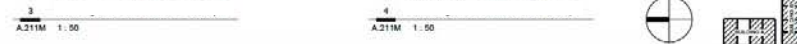
The BELLA



Total: 1468 sf
 Interior: 1328 sf
 2nd Floor: 702 sf
 3rd Floor: 626 sf
 Exterior: 140 sf
 81 sf (entrance) 59 sf (balcony)



Total: 1455 sf
 Interior: 1312 sf
 2nd Floor: 693 sf
 3rd Floor: 619 sf
 Exterior: 143 sf
 84 sf (entrance) 59 sf (balcony)



Bedrooms	3 plus Flex
Bathroom	2 Full, 1 Half
Sq ft total	1454 to 1472
Sq ft Interior space	1312 to 1332
Sq ft exterior space	140 to 143

- Upper Two-level design with soaring cathedral ceilings on upper floor.
- Private courtyard entry.
- Stunning west-facing deck off the upper primary suite for gorgeous sunset views over the West Shore Mountains.
- Central kitchen & living/dining area ideal for entertaining.
- Dedicated private and secure bicycle garage for two cargo e-bikes.

The BELLA



Total: 1454 sf
 Interior: 1312 sf
 2nd Floor: 693 sf
 3rd Floor: 619 sf
 Exterior: 142 sf
 83 sf (entrance) 59 sf (balcony)



Total: 1472 sf
 Interior: 1332 sf
 2nd Floor: 704 sf
 3rd Floor: 628 sf
 Exterior: 140 sf
 81 sf (entrance) 59 sf (balcony)

Bedrooms	3 plus Flex
Bathroom	2 Full, 1 Half
Sq ft total	1454 to 1472
Sq ft Interior space	1312 to 1332
Sq ft exterior space	140 to 143

- Upper Two-level design with soaring cathedral ceilings on upper floor.
- Private courtyard entry.
- Stunning west-facing deck off the upper primary suite for gorgeous sunset views over the West Shore Mountains.
- Central kitchen & living/dining area ideal for entertaining.
- Dedicated private and secure bicycle garage for two cargo e-bikes.







The EDWARD

Consisting of both front and back patios, plus the expansive south facing balcony off the primary suite, the Edward provides plenty of indoor and outdoor living. The main floor has a sleek, modern blend of stylish kitchen with integrated dining and living area. Plus, plenty of storage and natural light accompanies the high-ceilings. The second floor provides two secondary bedrooms overlooking the tree-lined street. But the show-stopper is the stunning primary level with soaring cathedral ceilings, gorgeous Olympic mountain views, spa-like integrated ensuite with separate soaker tub - all providing a true sanctuary of urban living that ties into the natural vistas around it.

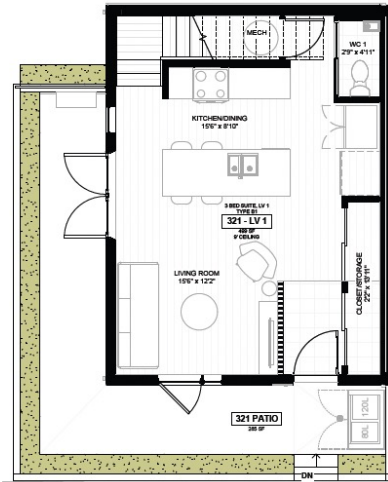
THE EDWARD

Confident and connected on Edward Street, The Edward is NALU's signature residence a 3 bed + flex, 2.5 bath, three-level home with stunning panoramic views.

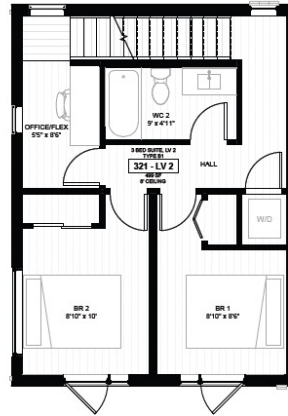


Bedrooms	3 plus Flex
Bathroom	2 Full, 1 Half
Sq ft total	1665 to 1809
Sq ft Interior space	1358 to 1376
Sq ft exterior space	307 to 433

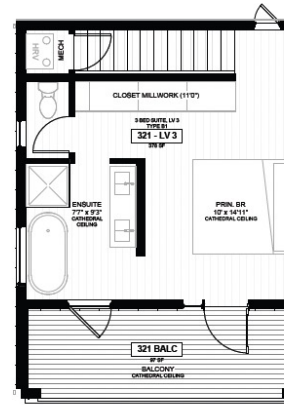
The EDWARD



Total: 1745 sf



Interior: 1376 sf
Exterior: 369 sf : 272 sf (wrap-around patio), 97 sf (upper balcony)

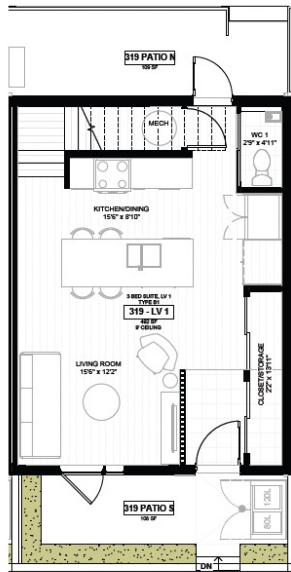


1st Floor: 499 sf, 2nd Floor: 499 sf, 3rd Floor: 378 sf

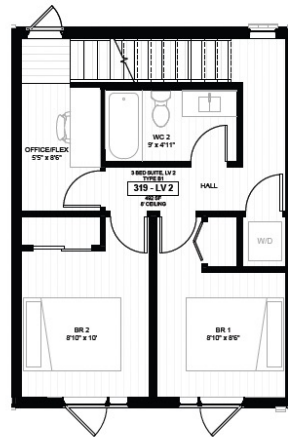
1
A.220M 1:50

2
A.220M 1:50

3
A.220M 1:50



Total: 1668 sf



Interior: 1358 sf
Exterior: 310 sf : 104 sf (front patio), 109 sf (back patio), 97 sf (upper balcony)



1st Floor: 492 sf, 2nd Floor: 492 sf, 3rd Floor: 374 sf

4
A.220M 1:50

5
A.220M 1:50

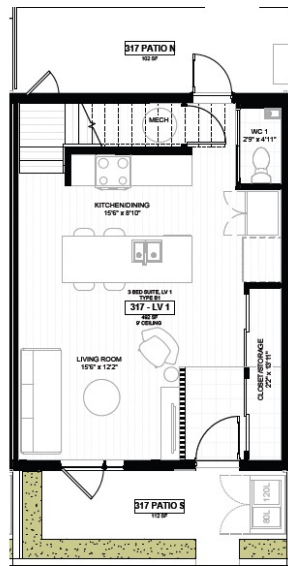
6
A.220M 1:50



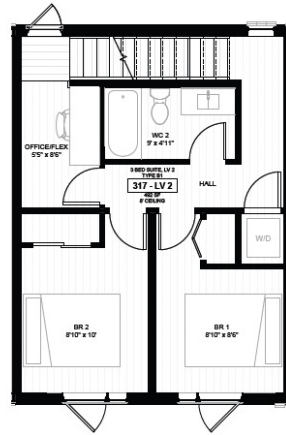
Bedrooms	3 plus Flex
Bathroom	2 Full, 1 Half
Sq ft total	1665 to 1809
Sq ft Interior space	1358 to 1376
Sq ft exterior space	307 to 433

- Private streetfront entry with patios at the front and back off of living space.
- Expansive upper deck capturing 180* south-facing views
- 3-level design with statement architecture and flow.
- Stunning primary level with expansive cathedral ceilings and spa-like integrated ensuite.
- Dedicated private and secure bicycle garage for two cargo e-bikes.

The EDWARD



Total: 1665 sf



Interior: 1358 sf
Exterior: 307 sf : 109 sf (front patio), 102 sf (back patio), 96 sf (upper balcony)

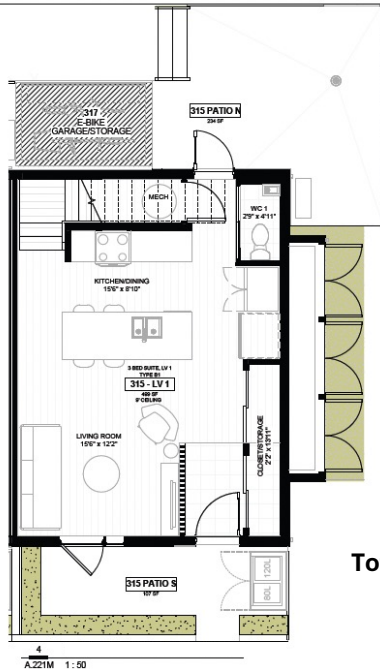


1st Floor: 492 sf, 2nd Floor: 492 sf, 3rd Floor: 374 sf

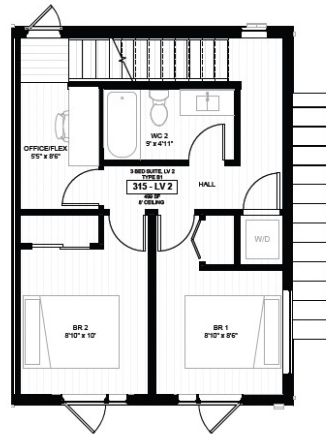
1
A.221M 1:50

2
A.221M 1:50

3
A.221M 1:50



Total: 1809 sf



Interior: 1376 sf
Exterior: 433 sf : 102 sf (front patio), 234 sf (back patio), 97 sf (upper balcony)



1st Floor: 499 sf, 2nd Floor: 499 sf, 3rd Floor: 378 sf

4
A.221M 1:50

5
A.221M 1:50

6
A.221M 1:50



Bedrooms	3 plus Flex
Bathroom	2 Full, 1 Half
Sq ft total	1665 to 1809
Sq ft Interior space	1358 to 1376
Sq ft exterior space	307 to 433

- Private streetfront entry with patios at the front and back off of living space.
- Expansive upper deck capturing 180* south-facing views
- 3-level design with statement architecture and flow.
- Stunning primary level with expansive cathedral ceilings and spa-like integrated ensuite.
- Dedicated private and secure bicycle garage for two cargo e-bikes.







Kinfolk and Ceramic II



nALU

