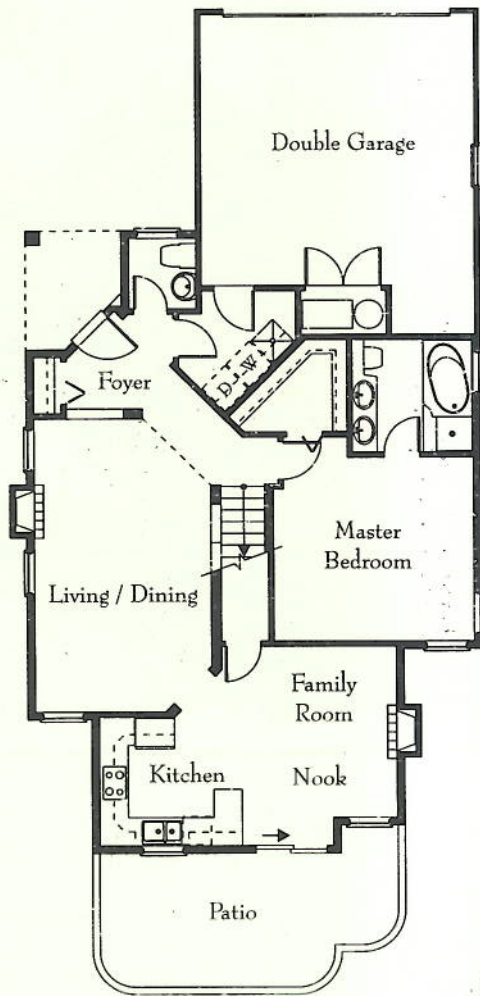


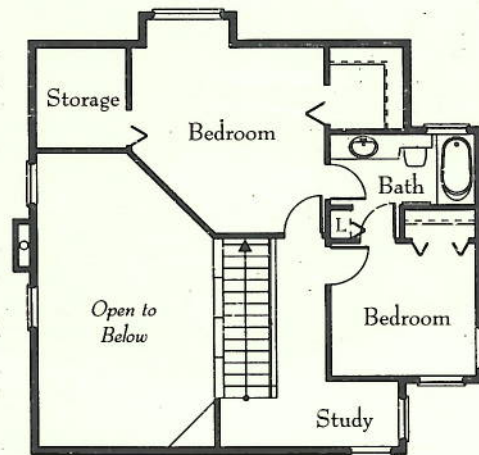
# ◆ THE BALSAM ◆

Total Architectural Area Approximately - 1,719 sq. ft.

## Main Level



## Upper Level



◆ HIGHGROVE ◆

The developer reserves the right to modify or change plans, specifications, features and prices without notice. Renderings are an artist's conception only. All dimensions and sizes are approximate. Patio areas, exterior parking and landscaping may change from the artist's conception and are intended as general reference only. Home sizes are computed by the architect to the outside face of exterior walls and may vary from the strata measurements as computed by the surveyor. E. & O. E.