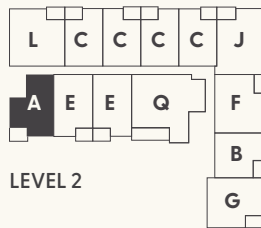
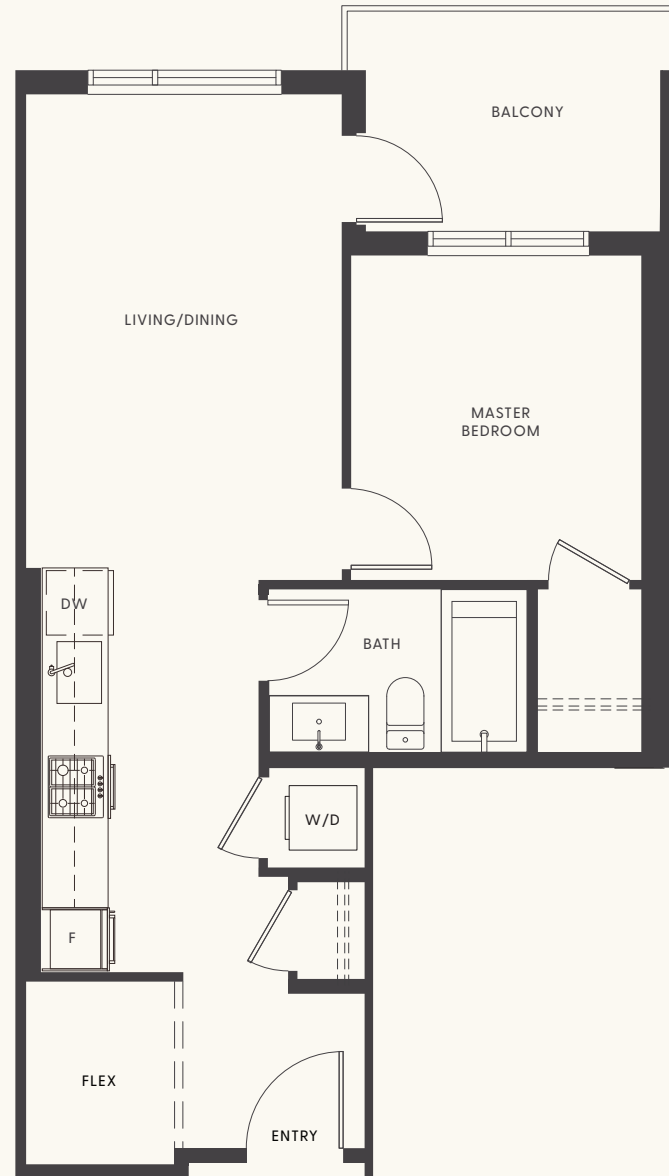


# Plan A

1 BEDROOM &  
1 BATHROOM

535 FT<sup>2</sup>

**Chroma**  
BY FORTE LIVING



[LIVEATCHROMA.COM](http://LIVEATCHROMA.COM)

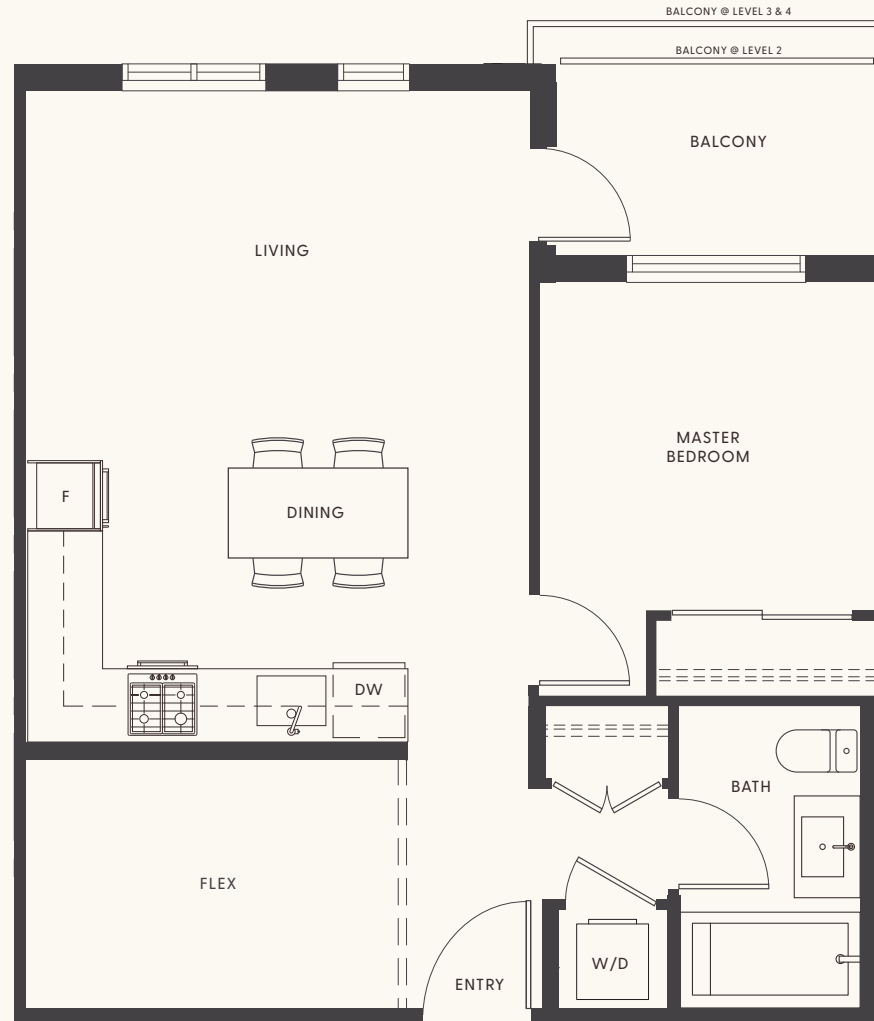
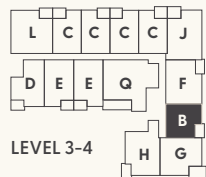
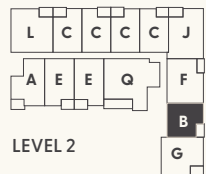
\* In our continuing effort to improve and maintain the high standard of the Chroma development, the developer reserves the right to modify or change plans, specifications, features and prices without notice. Materials may be substituted with equivalent or better at the developer's sole discretion. All dimensions and sizes are approximate and are based on Architectural measurements. As reverse, flipped, and/or mirrored plans occur throughout the development please see architectural plans for exact unit layout if material to your decision to purchase. Renderings are an artist's conception and are intended as a general reference only. Please ask one of the helpful sales staff to reference the most recent set of architectural construction drawings for most up to date dimensions and other details. Please refer to disclosure statement for specific offering details. E. & O.E. Sales and Marketing provided by Fifth Avenue Real Estate Marketing Ltd. [www.fifthave.ca](http://www.fifthave.ca)

# Plan B

**Chroma**  
BY FORTE LIVING

1 BEDROOM,  
1 BATHROOM  
& FLEX

597 FT<sup>2</sup>

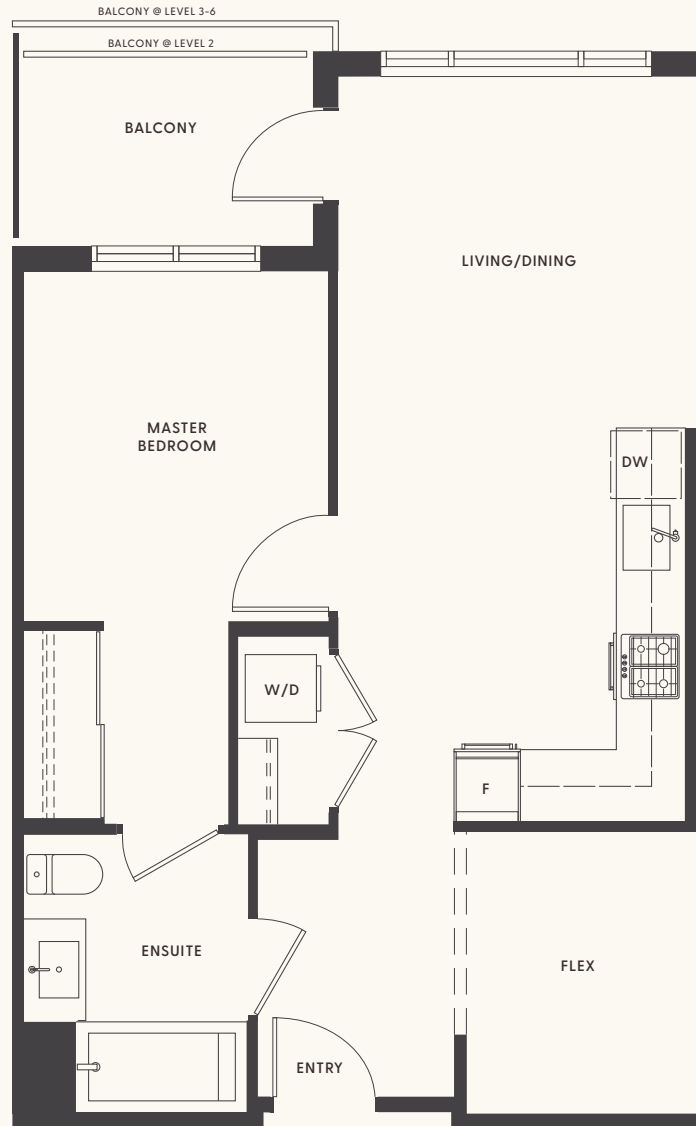
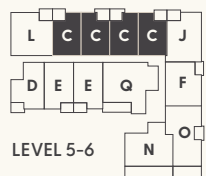
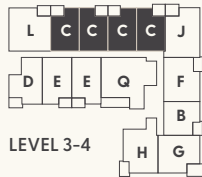
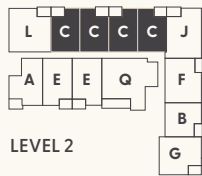


# Plan C

**Chroma**  
BY FORTE LIVING

1 BEDROOM,  
1 BATHROOM  
& FLEX

600 FT<sup>2</sup>



FORTE Living **kerkhoff** FIFTH AVE

[LIVEATCHROMA.COM](http://LIVEATCHROMA.COM)

\* Window placement in living room varies.

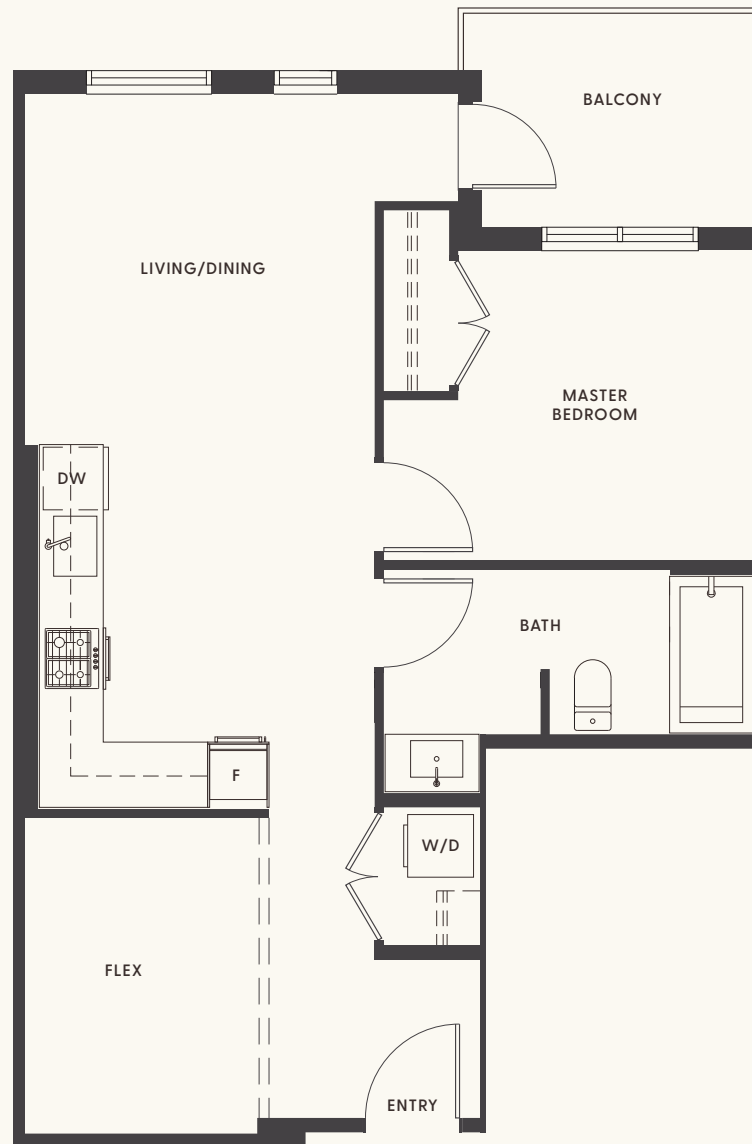
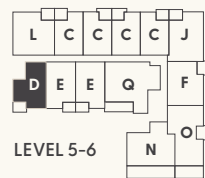
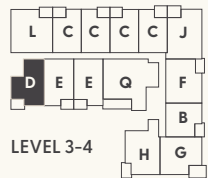
\* In our continuing effort to improve and maintain the high standard of the Chroma development, the developer reserves the right to modify or change plans, specifications, features and prices without notice. Materials may be substituted with equivalent or better at the developer's sole discretion. All dimensions and sizes are approximate and are based on Architectural measurements. As reverse, flipped, and/or mirrored plans occur throughout the development please see architectural plans for exact unit layout if material to your decision to purchase. Renderings are an artist's conception and are intended as a general reference only. Please ask one of the helpful sales staff to reference the most recent set of architectural construction drawings for most up to date dimensions and other details. Please refer to disclosure statement for specific offering details. E. & O.E. Sales and Marketing provided by Fifth Avenue Real Estate Marketing Ltd. [www.fifthave.ca](http://www.fifthave.ca)

# Plan D

**Chroma**  
BY FORTE LIVING

1 BEDROOM,  
1 BATHROOM  
& FLEX

674 FT<sup>2</sup>



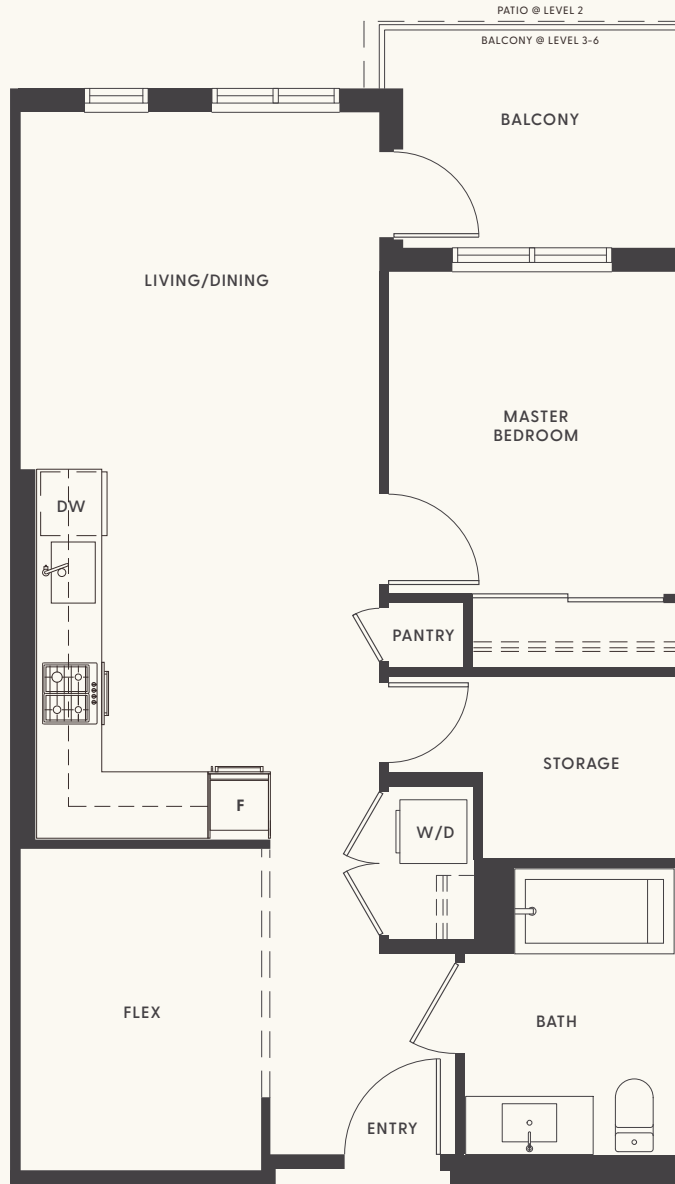
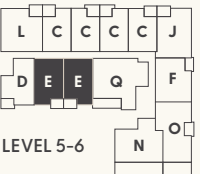
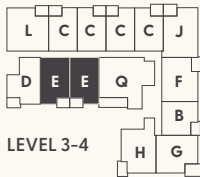
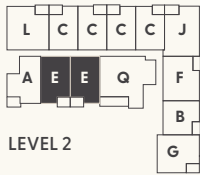
[LIVEATCHROMA.COM](http://LIVEATCHROMA.COM)

\* In our continuing effort to improve and maintain the high standard of the Chroma development, the developer reserves the right to modify or change plans, specifications, features and prices without notice. Materials may be substituted with equivalent or better at the developer's sole discretion. All dimensions and sizes are approximate and are based on Architectural measurements. As reverse, flipped, and/or mirrored plans occur throughout the development please see architectural plans for exact unit layout if material to your decision to purchase. Renderings are an artist's conception and are intended as a general reference only. Please ask one of the helpful sales staff to reference the most recent set of architectural construction drawings for most up to date dimensions and other details. Please refer to disclosure statement for specific offering details. E. & O.E. Sales and Marketing provided by Fifth Avenue Real Estate Marketing Ltd. [www.fifthave.ca](http://www.fifthave.ca)

# Plan E

1 BEDROOM,  
1 BATHROOM  
& FLEX

677 FT<sup>2</sup>



**Chroma**  
BY FORTE LIVING



[LIVEATCHROMA.COM](http://LIVEATCHROMA.COM)

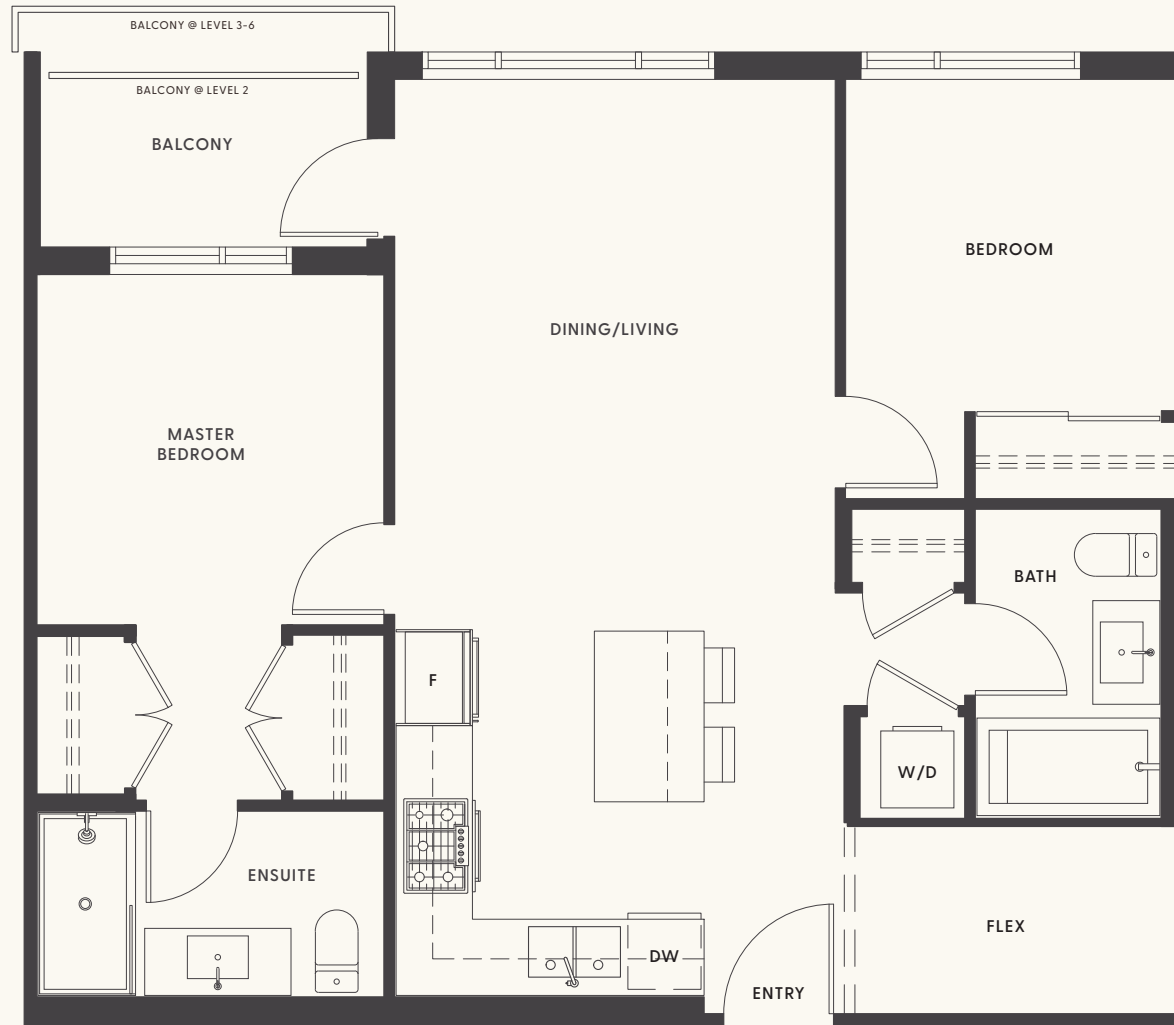
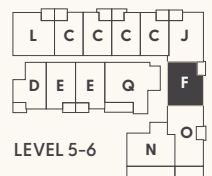
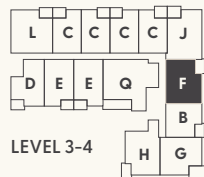
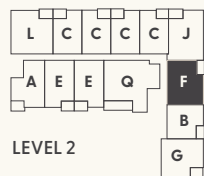
\* In our continuing effort to improve and maintain the high standard of the Chroma development, the developer reserves the right to modify or change plans, specifications, features and prices without notice. Materials may be substituted with equivalent or better at the developer's sole discretion. All dimensions and sizes are approximate and are based on Architectural measurements. As reverse, flipped, and/or mirrored plans occur throughout the development please see architectural plans for exact unit layout if material to your decision to purchase. Renderings are an artist's conception and are intended as a general reference only. Please ask one of the helpful sales staff to reference the most recent set of architectural construction drawings for most up to date dimensions and other details. Please refer to disclosure statement for specific offering details. E. & O.E. Sales and Marketing provided by Fifth Avenue Real Estate Marketing Ltd. [www.fifthave.ca](http://www.fifthave.ca)

# Plan F

**Chroma**  
BY FORTE LIVING

2 BEDROOM,  
2 BATHROOM  
& FLEX

795 FT<sup>2</sup>



[LIVEATCHROMA.COM](http://LIVEATCHROMA.COM)

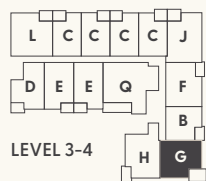
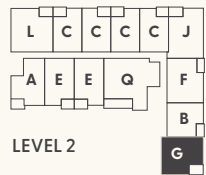
\* In our continuing effort to improve and maintain the high standard of the Chroma development, the developer reserves the right to modify or change plans, specifications, features and prices without notice. Materials may be substituted with equivalent or better at the developer's sole discretion. All dimensions and sizes are approximate and are based on Architectural measurements. As reverse, flipped, and/or mirrored plans occur throughout the development please see architectural plans for exact unit layout if material to your decision to purchase. Renderings are an artist's conception and are intended as a general reference only. Please ask one of the helpful sales staff to reference the most recent set of architectural construction drawings for most up to date dimensions and other details. Please refer to disclosure statement for specific offering details. E. & O.E. Sales and Marketing provided by Fifth Avenue Real Estate Marketing Ltd. [www.fifthave.ca](http://www.fifthave.ca)

# Plan G

**Chroma**  
BY FORTE LIVING

2 BEDROOM &  
2 BATHROOM

812 FT<sup>2</sup>

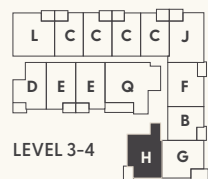
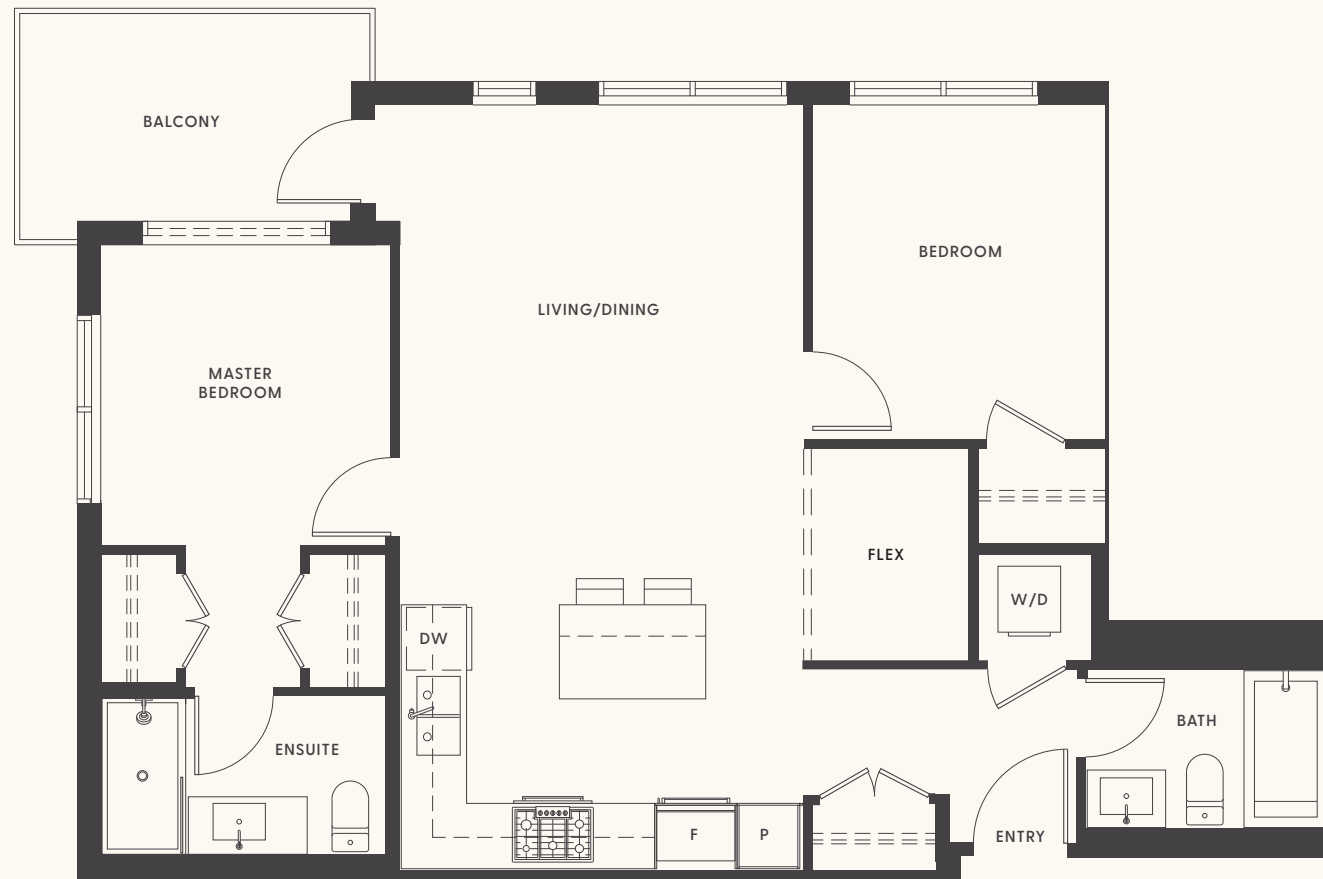


# Plan H

**Chroma**  
BY FORTE LIVING

2 BEDROOM,  
2 BATHROOM  
& FLEX

857 FT<sup>2</sup>



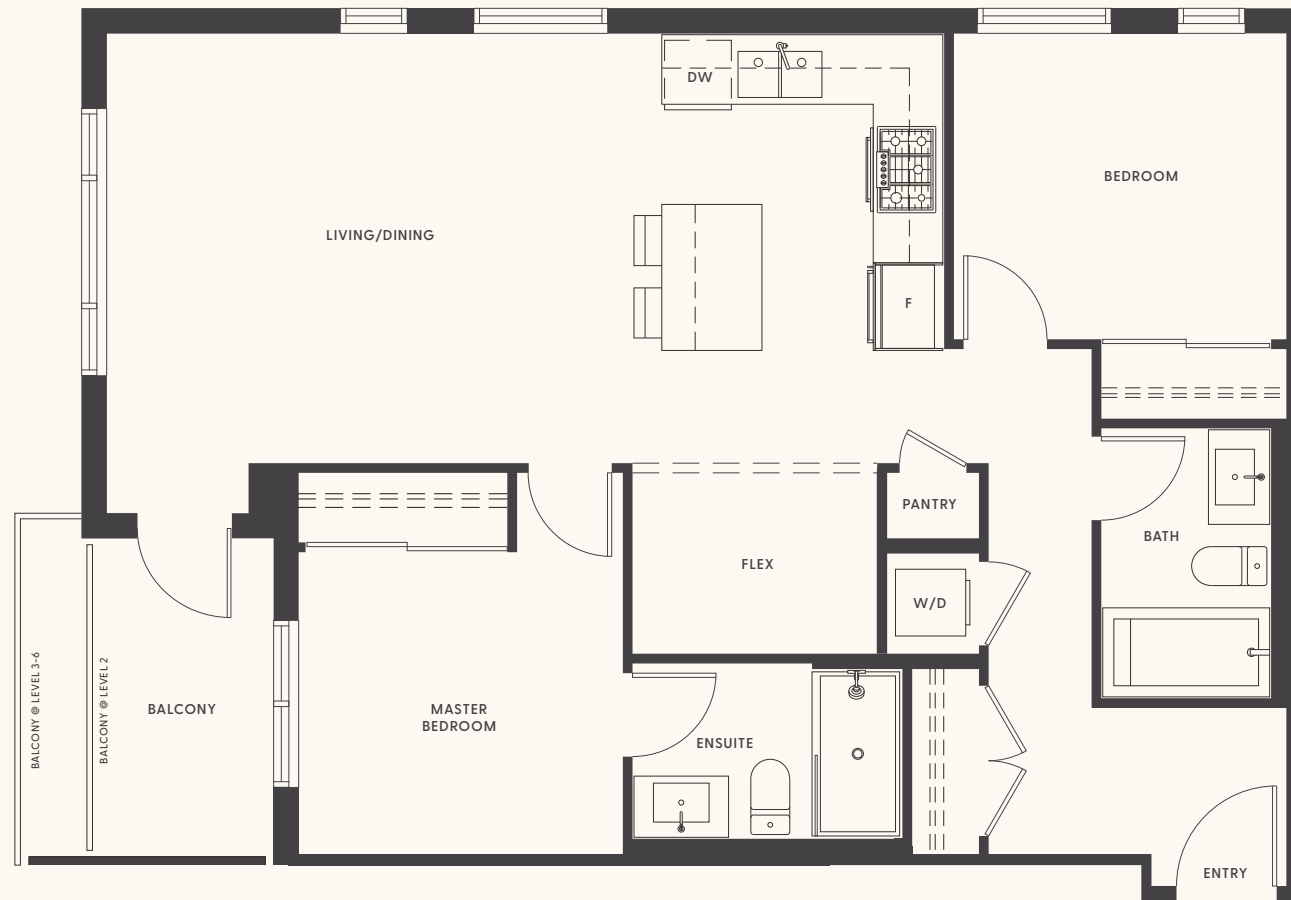
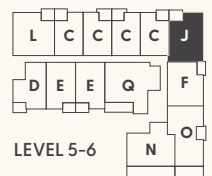
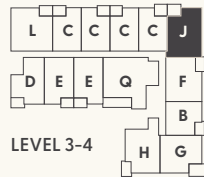
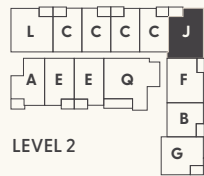


# Plan J

**Chroma**  
BY FORTE LIVING

2 BEDROOM,  
2 BATHROOM  
& FLEX

885 FT<sup>2</sup>



# Plan K

# Chroma

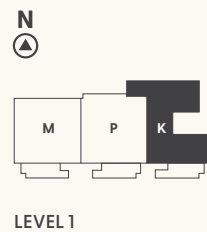
BY FORTE LIVING

2 BEDROOM &  
2 BATHROOM

910 FT<sup>2</sup>

Patio: 156 FT<sup>2</sup>

\*Walk-up from Street Level



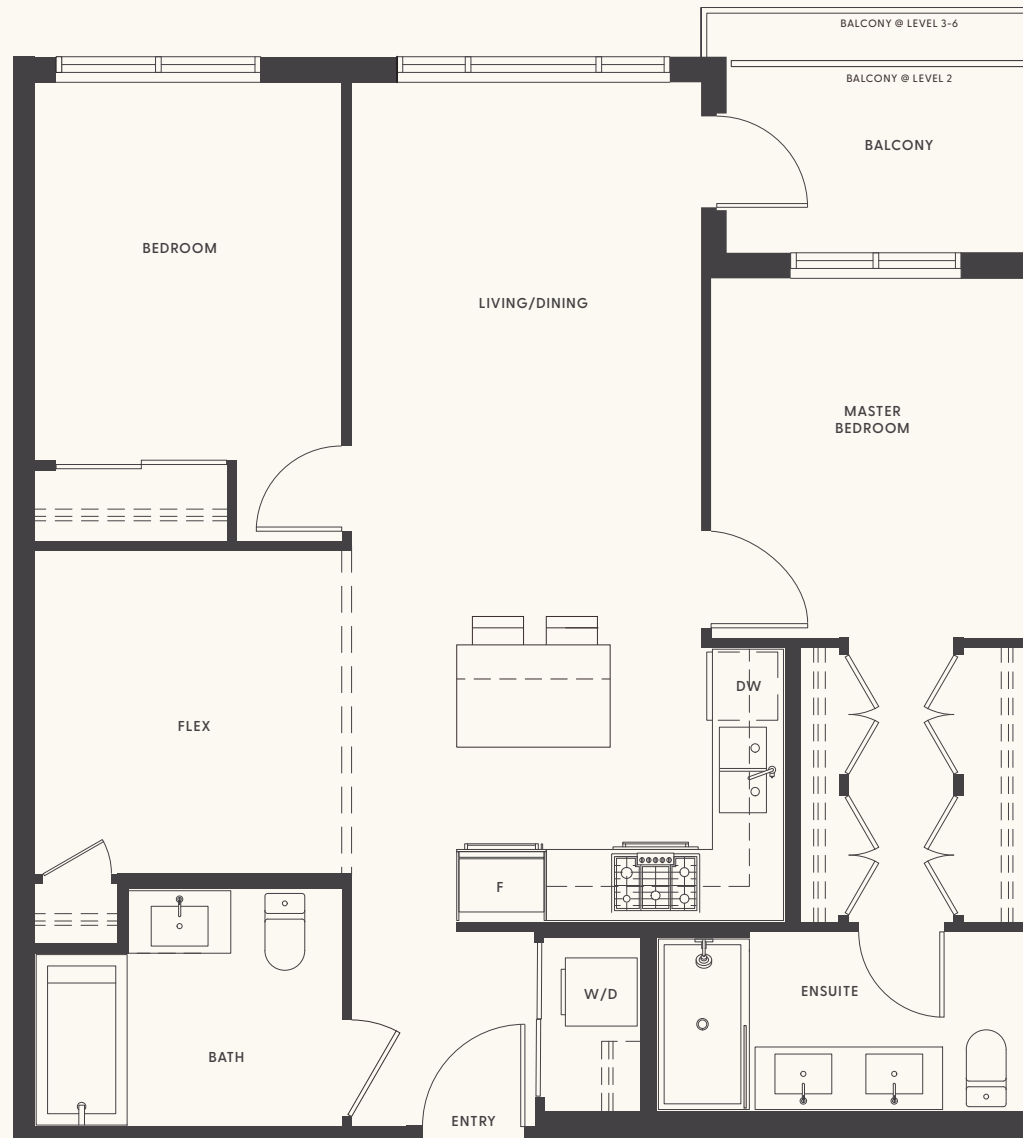
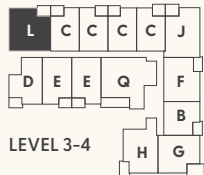
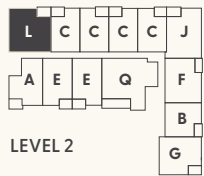
# Plan L

**Chroma**

BY FORTE LIVING

2 BEDROOM,  
2 BATHROOM  
& FLEX

922 FT<sup>2</sup>



[LIVEATCHROMA.COM](http://LIVEATCHROMA.COM)

\* In our continuing effort to improve and maintain the high standard of the Chroma development, the developer reserves the right to modify or change plans, specifications, features and prices without notice. Materials may be substituted with equivalent or better at the developer's sole discretion. All dimensions and sizes are approximate and are based on Architectural measurements. As reverse, flipped, and/or mirrored plans occur throughout the development please see architectural plans for exact unit layout if material to your decision to purchase. Renderings are an artist's conception and are intended as a general reference only. Please ask one of the helpful sales staff to reference the most recent set of architectural construction drawings for most up to date dimensions and other details. Please refer to disclosure statement for specific offering details. E. & O.E. Sales and Marketing provided by Fifth Avenue Real Estate Marketing Ltd. [www.fifthave.ca](http://www.fifthave.ca)

# Plan M

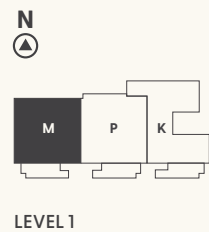
**Chroma**  
BY FORTE LIVING

3 BEDROOM &  
2 BATHROOM

944 FT<sup>2</sup>

Patio: 128 FT<sup>2</sup>

\*Walk-up from Street Level

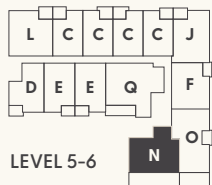
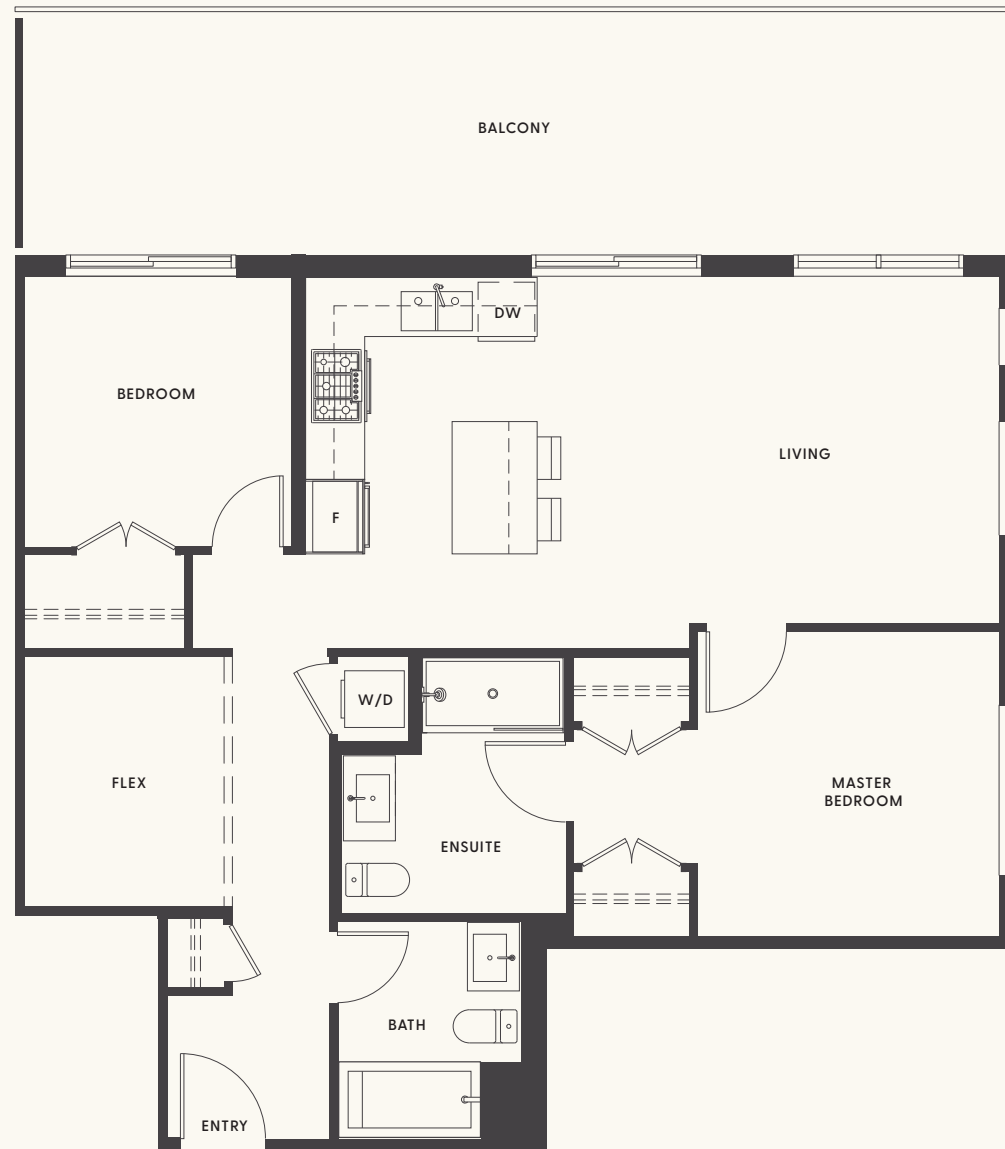


# Plan N

**Chroma**  
BY FORTE LIVING

2 BEDROOM,  
2 BATHROOM  
& FLEX

957 FT<sup>2</sup>

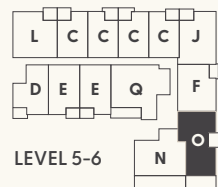


# Plan O

**Chroma**  
BY FORTE LIVING

2 BEDROOM &  
2 BATHROOM

984 FT<sup>2</sup>



LEVEL 5-6

# Plan P

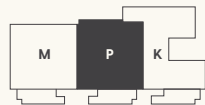
**Chroma**  
BY FORTE LIVING

2 BEDROOM,  
2 BATHROOM  
& FLEX

1,006 FT<sup>2</sup>

Patio: 128 FT<sup>2</sup>

\*Walk-up from Street Level



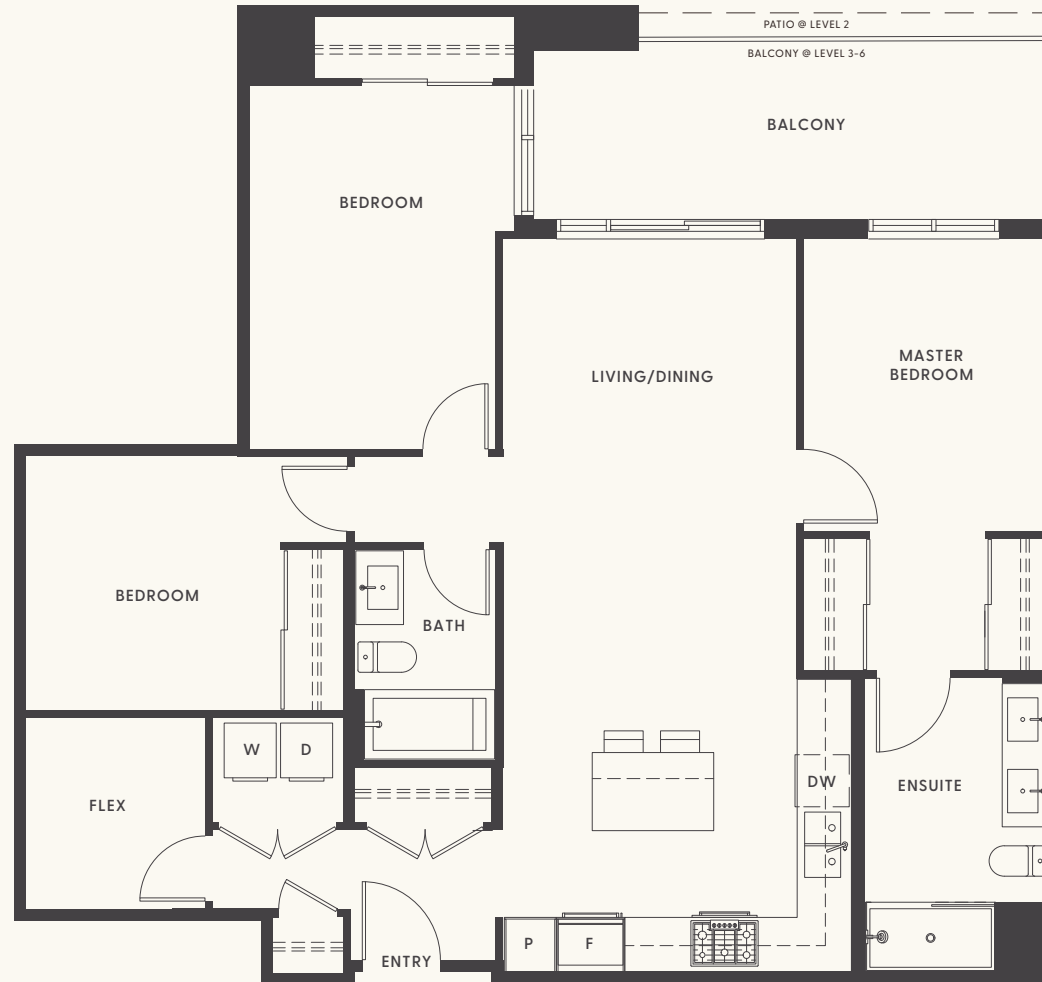
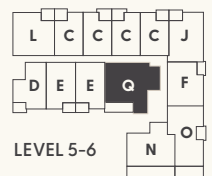
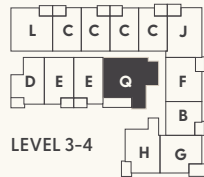
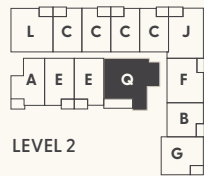
LEVEL 1

# Plan Q

**Chroma**  
BY FORTE LIVING

3 BEDROOM,  
2 BATHROOM  
& FLEX

1,144 FT<sup>2</sup>



[LIVEATCHROMA.COM](http://LIVEATCHROMA.COM)

\* In our continuing effort to improve and maintain the high standard of the Chroma development, the developer reserves the right to modify or change plans, specifications, features and prices without notice. Materials may be substituted with equivalent or better at the developer's sole discretion. All dimensions and sizes are approximate and are based on Architectural measurements. As reverse, flipped, and/or mirrored plans occur throughout the development please see architectural plans for exact unit layout if material to your decision to purchase. Renderings are an artist's conception and are intended as a general reference only. Please ask one of the helpful sales staff to reference the most recent set of architectural construction drawings for most up to date dimensions and other details. Please refer to disclosure statement for specific offering details. E. & O.E. Sales and Marketing provided by Fifth Avenue Real Estate Marketing Ltd. [www.fifthave.ca](http://www.fifthave.ca)