

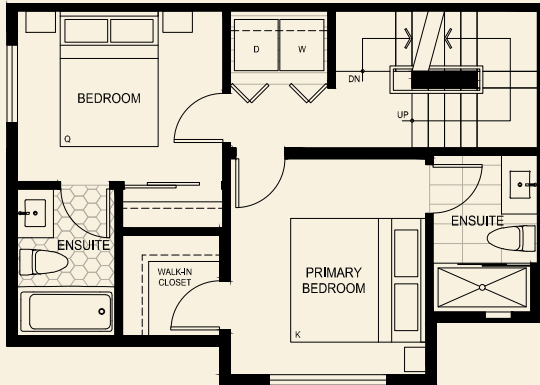
The Robinsons

PARKSIDE COLLECTION

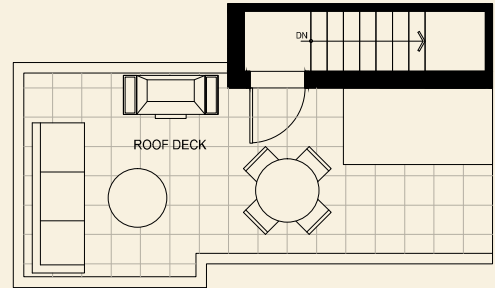
Plan A1b

2 Bed, 3.5 Bath + Lock Off + Den + Flex + Rooftop Deck

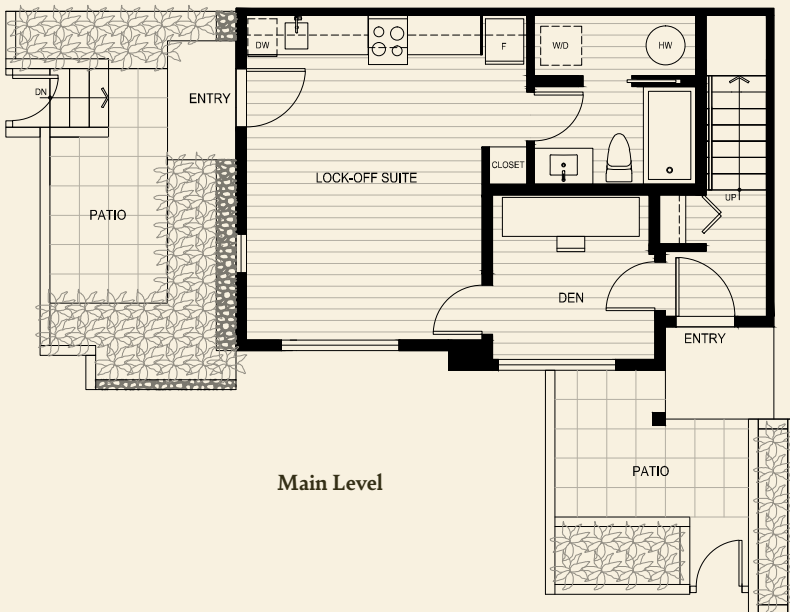
Interior: 1537 Sq Ft | Exterior: 477 Sq Ft



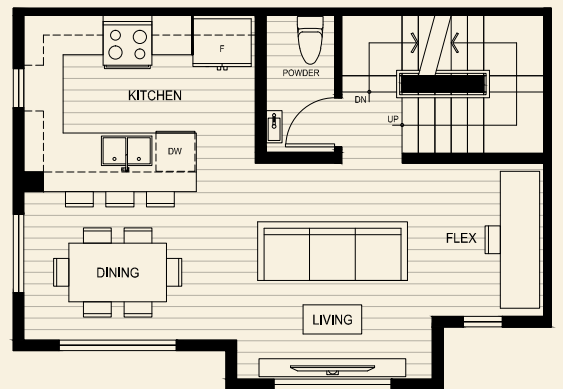
Upper Level



Rooftop Deck

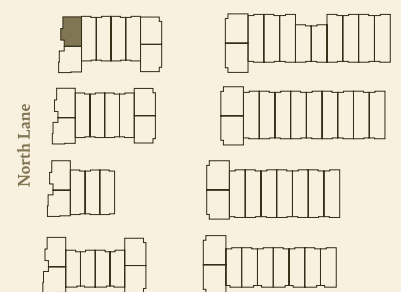


Main Level



Second Level

Robinson Street



LiveAtTheRobinsons.ca

The homes at The Robinsons Parkside Collection are built by the developer WGP Seaton Development LP. The builder reserves the right to make modifications and changes should they be necessary. Select upgrades may cause ceiling drops. Dimensions, sizes, specifications, layouts, and materials are approximate only and subject to change without notice. Outdoor square footage, landscaping, stairs, and landings vary and may not necessarily reflect the floorplan portrayed above. E.&O.E.

West Lane

