

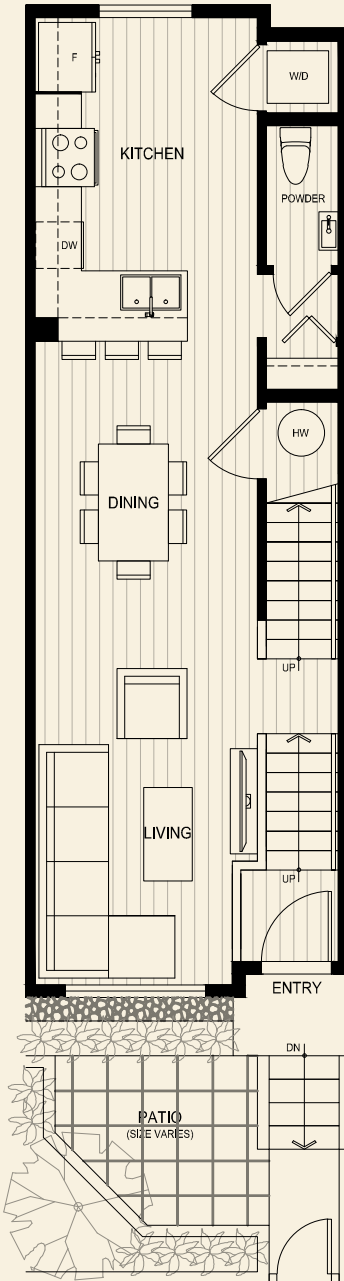
The Robinsons

PARKSIDE COLLECTION

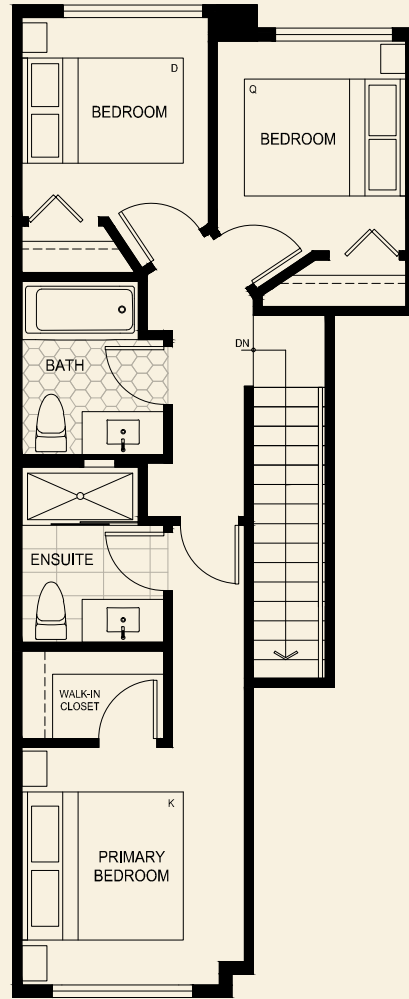
Plan D2

3 Bed, 2.5 Bath

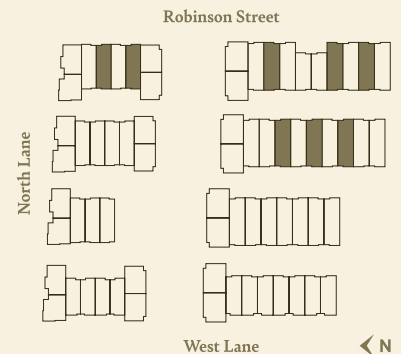
Interior: 1153 Sq Ft | Exterior: 115 - 137 Sq Ft



Main Level



Second Level



LiveAtTheRobinsons.ca

The homes at The Robinsons Parkside Collection are built by the developer WGP Seaton Development LP. The builder reserves the right to make modifications and changes should they be necessary. Select upgrades may cause ceiling drops. Dimensions, sizes, specifications, layouts, and materials are approximate only and subject to change without notice. Outdoor square footage, landscaping, stairs, and landings vary and may not necessarily reflect the floorplan portrayed above. E.&O.E.

