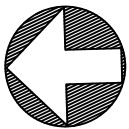




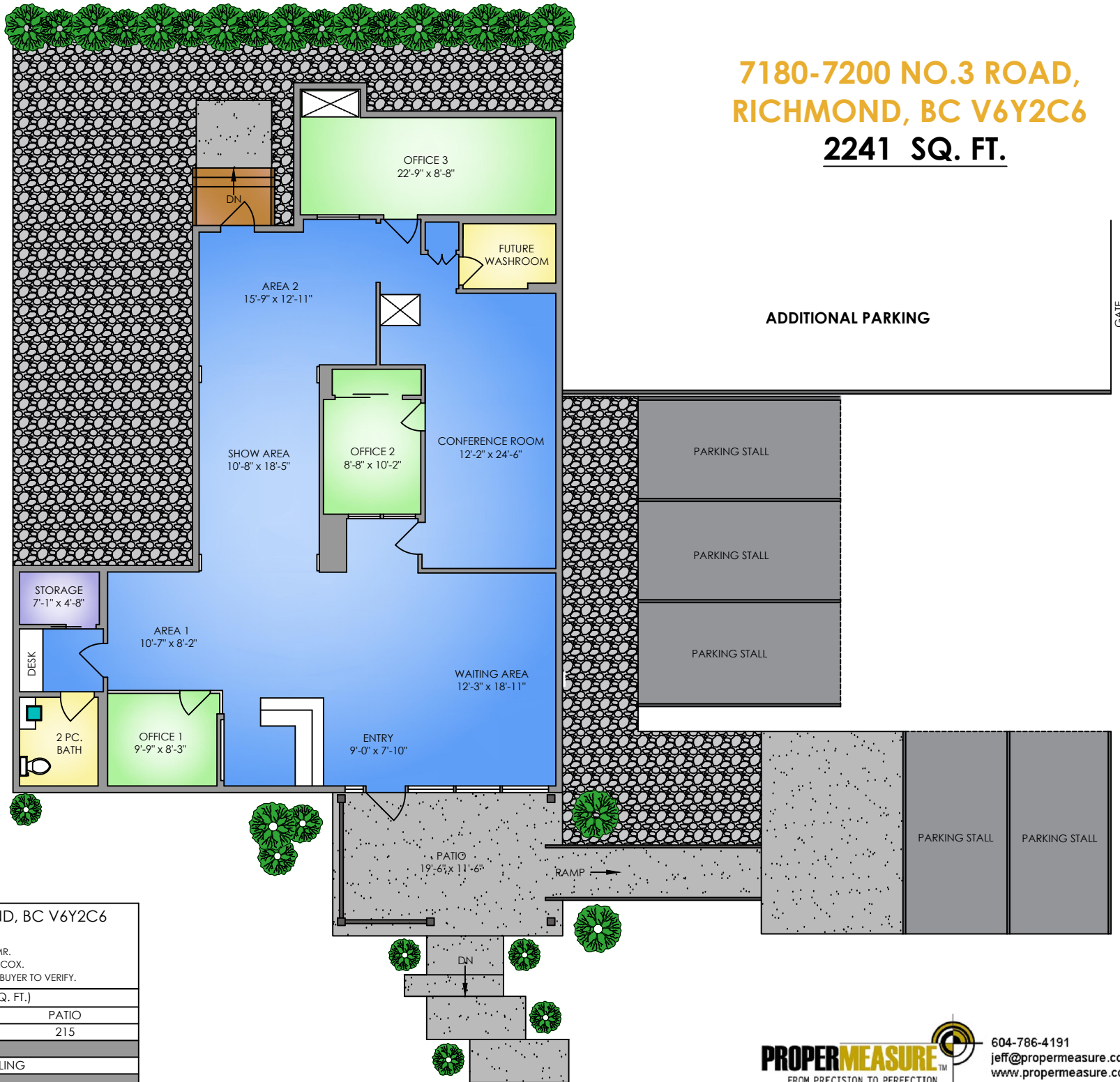
SIGRID WILCOX
PERSONAL REAL ESTATE CORPORATION



NORTH



0' 5' 10'
SCALE



**7180-7200 NO.3 ROAD,
RICHMOND, BC V6Y2C6**
2241 SQ. FT.

7180-7200 NO. 3 ROAD, RICHMOND, BC V6Y2C6		
OCTOBER 19, 2017		
PREPARED BY PROPER MEASURE - MR.		
FOR THE EXCLUSIVE USE OF SIGRID WILCOX.		
PLANS MAY NOT BE 100% ACCURATE, IF CRITICAL BUYER TO VERIFY.		
FLOOR	AREA (SQ. FT.)	
	FINISHED	PATIO
TOTAL	2241	215
NOTES	9"1" CEILING	