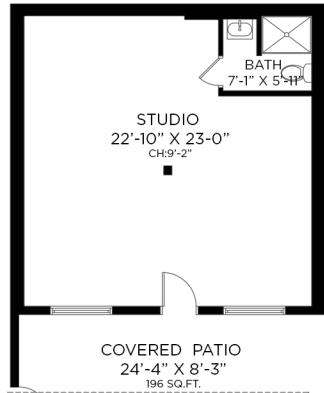
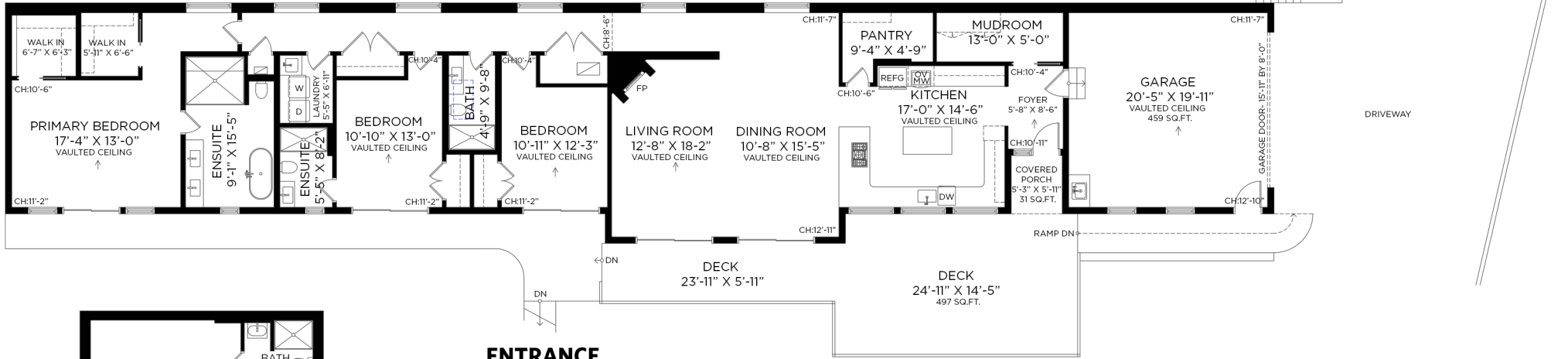


**MAIN FLOOR - 2,400 SQ.FT.**  
CEILING HEIGHT: 8'-6" TO 12'-11"



**LOWER FLOOR - 617 SQ.FT.**  
CEILING HEIGHT: 9'-2"

MAIN FLOOR: 2,400 SQ.FT.  
LOWER FLOOR: 617 SQ.FT.  
**TOTAL INTERIOR: 3,017 SQ.FT.**

ATTACHED GARAGE: 459 SQ.FT.  
COVERED CARPORT: 328 SQ.FT.  
EXTERIOR LIVING: 724 SQ.FT.



Floor plan not suitable for architectural/construction purposes. ANSI Z765 standards used to calculate square footage. Buyer to verify. E&O insured for \$1,000,000.